



The Global Network for B2B Integration in High Tech Industries

## **EDIFICE Message Implementation Guideline**

### **Receiving Advice**

### **RECADV Issue EDRC10**

**Endorsed on 15 June 2011**

**Based on UN/EDIFACT D.10A RECADV message**

Copyright ©EDIFICE 2011

All rights reserved. No part of this publication may be reproduced or transmitted in any form or by any means without prior permission of EDIFICE.

Notwithstanding the fact that the utmost care has been observed in the collecting, drawing up and formulating of data, EDIFICE can under no circumstances be held liable for errors, omissions or misinterpretations as a result of the information compiled in the guidelines.

EDIFICE  
The Global Network for B2B Integration in High Tech industries  
EDIFICE secretariat  
Dora Cresens  
Tiensestraat 12  
B-3320 Hoegaarden  
Belgium  
Tel: +32 475 85 40 39  
Email: Dora.Cresens@edifice.org

## **TABLE OF CONTENTS**

COMPARISON TO PREVIOUS ISSUE .....	3
EDIFICE FUNCTIONAL DEFINITION .....	5
REFERENCES .....	6
EXPLANATORY NOTES .....	6
MESSAGE STRUCTURE CHART.....	7
BRANCHING DIAGRAM .....	8
SEGMENT DESCRIPTION .....	11
SEGMENT DETAILS .....	17
EXAMPLES .....	53

## **COMPARISON TO PREVIOUS ISSUE**

### **Issue EDDS10 of 1 June 2011: Upgrade to UN/EDIFACT Directory D.10A**

The only structural changes apply to the renaming of SGroups:

SG17 is now SG20  
SG18 is now SG21  
SG20 is now SG23  
SG21 is now SG24  
SG22 is now SG25  
SG23 is now SG28  
SG26 is now SG31  
SG27 is now SG32  
SG28 is now SG33

EDIFICE recommends to make use of EDIFACT code lists.

1. Where possible the earlier references to UN/ECE Recommendations were removed and EDIFACT qualifiers are used instead.
2. A number of EDIFICE defined qualifiers were replaced with relevant EDIFACT qualifiers or were completely removed when not in use. In some cases new EDIFICE qualifiers were defined since the old qualifiers have been included in the EDIFACT code list with a different definition

The summary of changes in this MIG is listed below:

<b>Place</b>	<b>EDIFICE Code (*)</b>	<b>Replaced with EDIFACT code/EDIFICE code (*)/Removed/Added</b>
All DTM-2005	X03=CCYMMDDHHMMZZZZZ (*) X04=CCYMMDDHHMMSSZZZZZ (*)	205=CCYMMDDHHMMZHHMM Removed
SG25-LIN/PIA-7143	DI=Distributor's part number (*)	SSS=Distributor's article identifier

### **Issue EDR04 of 1 June 2005:**

- Upgrade to UN/EDIFACT Code list D.04B

Replacement of EDIFICE codes with standard codes.

- BGM DE 1001:

'352' Receiving advice replaced with '632' Goods receipt

- SG17 - PAC - DE 7065:

'CN' Container replaced with 'CN' Container, not otherwise specified as transport equipment

'PE' Pallet replaced with 'PX' Pallet

12 May 2004 : EDIFIX 5.0 Technical Upgrade

- The 'KMT' qualifier in SEG QTY DE 6411 is now defined as (\*) EDIFICE code. UN/ECE Recommendation 20 specifies 'KTM' as qualifier for 'kilometre'.

21 May 2003 :

- SG23 and SG27 INP – 4401 – Qualifier 'AE' Change invoice replaced by 'AB' Change invoice, as specified by UN/EDIFACT

- EDIFIX 4.2 Technical upgrade; review and correction of examples

Issue EDR03 13 November:

- Addition of the following code value:

SG22, LIN segment, CO C212, DE 7143 codes 'SRV' EAN.UCC Global Trade Item Number

Issue EDR03 29 May 2002 – addition of recommended set of DTM qualifiers

Issue EDR03 9 November 2001 : Addition of the UN/EDIFACT qualifiers related to License Plate included in the UN/EDIFACT D.01A Code list.

- Addition of the following code values:

SG20, GIN segment, DE 7405, codes 'VZ' = Transport unit identification according to ISO/IEC

15459 - Data Identifier 'J'

'WA' = Indivisible transport unit according to ISO/IEC

15459 - Data Identifier '1J'

'WB' = Divisible transport unit according to ISO/IEC 15459

Data Identifier '2J'

- The examples have been updated according the additional qualifiers for license plate.

Issue EDR02 includes the changes that have been made to the issue 1 of the Receiving Advice document endorsed by the EDIFICE Plenary on 27 November 1996. The changes are as follows:

- Recast from the D.96A version of the UN/EDIFACT directory to the D.97A version,
- Update of the following code value:
  - SG2, DOC segment, DE 1001, code '945' EUR 1 certificate of origin to '954' EUR 1 certificate of origin,
- Addition of the following code values:
  - all DTM segments, DE 2379, code '303' CCYMMDDHHMMZZZ
  - SG1, RFF segment, DE 1153, codes 'AAN' Delivery schedule number and 'SRN' Shipment reference number
  - SG10, TDT, CO C040, DE 3055, codes '9' EAN (International Article Numbering association) and '16' DUNS (Dun & Bradstreet)
  - SG22, LIN segment, DE 7143, codes 'DI' Distributor's part number
  - SG22, LIN segment, DE 3055, codes '89' Assigned by distributor '90' Assigned by manufacturer and '113' US, UCC (Uniform Code Council)
  - SG17, PAC segment, DE 7065, codes 'CN' Container 'PE' Pallet,
- Deletion of the following code values
  - SG6, COM segment, DE 3155, code 'TL' Telex
  - SG22, LIN segment, CO C212, DE 7147, codes 'IN' Buyer's item number 'SA' Supplier's article number
  - SG22, LIN segment, CO C212, DE 3055, code '16' DUNS (Dun & Bradstreet),
- Usage changed for the following segment groups/segments:
  - SG1, DTM segment, D1 to O1
  - SG3, R..3 to R..2
  - SG4, NAD segment, CO C080, DE 3045, O to N
  - SG6, COM segment, O..4 to O..3
  - SG20, D1 to D..99
  - SG22, LIN segment, DE 1082, A to R
  - SG22, LIN segment, CO C212, DE 3055, O to R
  - SG28, RFF segment, CO C506, DE 1156, O to D,
- Where UN/ECE Recommendations are referenced the most commonly used codes have been identified,
- Alignment of segments and composite data elements to ensure conformance (data harmonization) across all EDIFICE Implementation Guidelines,
- Update of the REFERENCES and EXPLANATORY NOTES sections to comply with the EDIFICE Standards for Documentation of Message Implementation Guidelines issue 3,
- Update of examples,
- Documentation adjustments resulting from the use of GEFEG's EdiFix Message Implementation Guidelines documentation tool,
- Correction of typographical errors.

## **EDIFICE FUNCTIONAL DEFINITION**

This message is to address the business needs related to the physical goods receipt. It has been created as a response to the Despatch Advice message with which it has a one-to-one relationship. It should only be sent after the receipt of the goods. The message allows for the reporting of discrepancies in products, quantities, terms, packages, etc. on the Despatch Advice message.

The message may be used to indicate that the received consignment is completely in line with the consignment information given in the Despatch Advice message. In this case EDIFICE recommends that no detail should be provided: it is sufficient to refer to the Despatch Advice in the heading section.

Otherwise the message may inform about the discrepancies between the received consignment and the consignment information given in the Despatch Advice message.

### Principles:

The message is initiated by the party which received the goods. The message relates to one physical delivery to a single location and a single Despatch Advice message. It may cover a number of different items or packages.

The message is normally sent to the shipper of the goods. In situations where the shipment is organised by the receiver of the goods the message may be sent to the Freight Forwarder.

It is recognised that information pertaining to the receipt of the goods may change after the initial message has been sent. To accommodate these scenarios, both 'replace' and 'cancellation' message types are catered for by means of the BGM DE 1225.

Individual line items cannot be cancelled - in this case a replacement message should be sent.

Should a discrepancy on quantity occur for 1 line out of 10, EDIFICE recommends to provide the "received" quantity in segment QTY for the 10 lines and to provide the variance information in segment QVR only for the line with the discrepancy.

## **REFERENCES**

Refer to the document : Reference list for the EDIFICE message guidelines – Issue 1

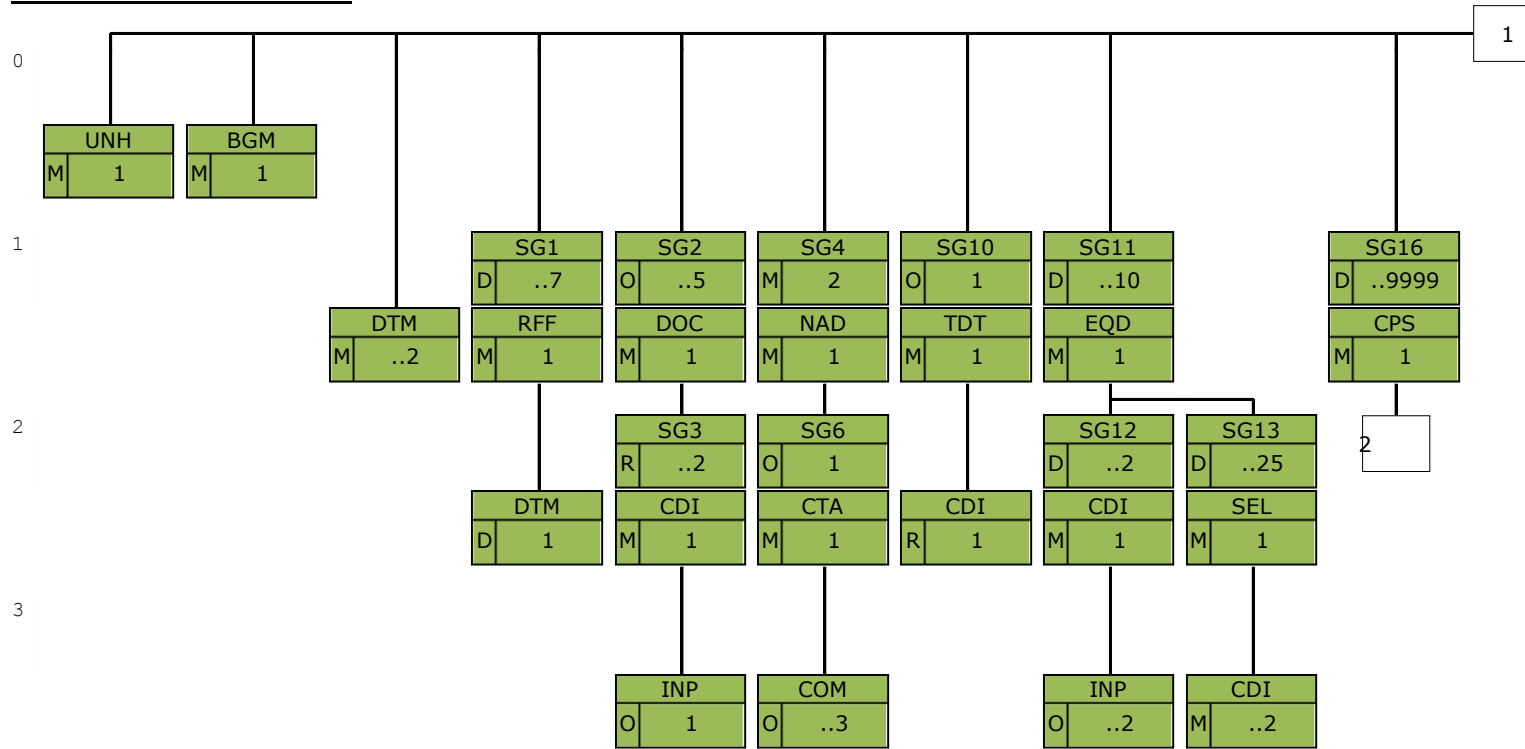
## **EXPLANATORY NOTES**

Refer to the document : Explanatory notes for the EDIFICE message guidelines – Issue 1

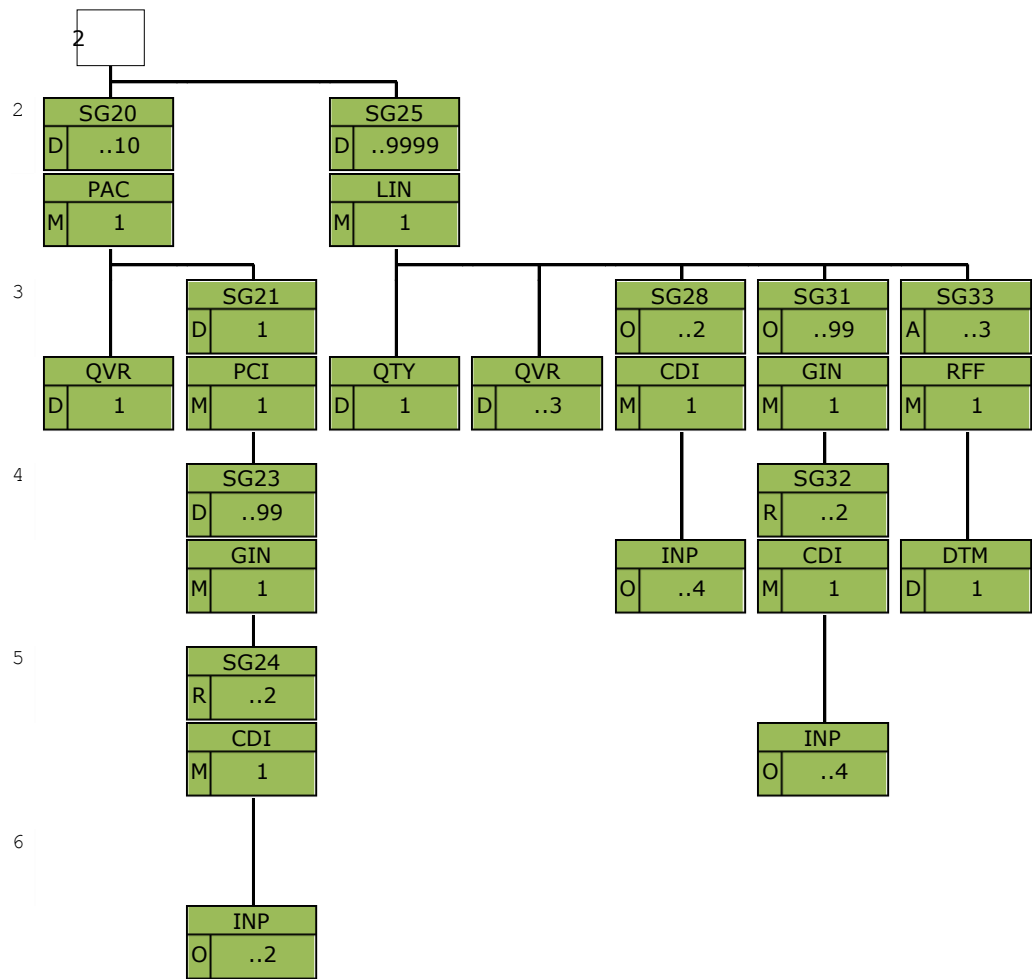
## MESSAGE STRUCTURE CHART

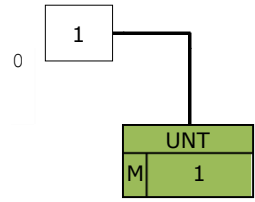
UNH	Message header	M1
BGM	Beginning of message	M1
DTM	Date/time/period	M..2
SG1		D..7
RFF	Reference	M1
DTM	Date/time/period	D1
SG2		O..5
DOC	Document/message details	M1
SG3		R..2
CDI	Physical or logical state	M1
INP	Parties and instruction	O1
SG4		M2
NAD	Name and address	M1
SG6		O1
CTA	Contact information	M1
COM	Communication contact	O..3
SG10		O1
TDT	Transport information	M1
CDI	Physical or logical state	R1
SG11		D..10
EQD	Equipment details	M1
SG12		D..2
CDI	Physical or logical state	M1
INP	Parties and instruction	O..2
SG13		D..25
SEL	Seal number	M1
CDI	Physical or logical state	M..2
SG16		D..9999
CPS	Consignment packing sequence	M1
SG20		D..10
PAC	Package	M1
QVR	Quantity variances	D1
SG21		D1
PCI	Package identification	M1
SG23		D..99
GIN	Goods identity number	M1
SG24		R..2
CDI	Physical or logical state	M1
INP	Parties and instruction	O..2
SG25		D..9999
LIN	Line item	M1
QTY	Quantity	D1
QVR	Quantity variances	D..3
SG28		O..2
CDI	Physical or logical state	M1
INP	Parties and instruction	O..4
SG31		O..99
GIN	Goods identity number	M1
SG32		R..2
CDI	Physical or logical state	M1
INP	Parties and instruction	O..4
SG33		A..3
RFF	Reference	M1
DTM	Date/time/period	D1
UNT	Message trailer	M1

**BRANCHING DIAGRAM**









## **SEGMENT DESCRIPTION**

---

### **UNH Message header**

Function: A service segment heading, and uniquely identifying a message.  
Usage: M1

---

### **BGM Beginning of message**

Function: A segment uniquely identifying the message by means of its coded name, number and function.  
Usage: M1

---

### **DTM Date/time/period**

Function: A segment specifying the date/time of creation of the message and the goods receipt date/time.  
Usage: M..2

---

### **SG1 RFF-DTM**

Function: A group of segments referencing documents and their dates/times, relating to the whole message.  
Usage: D..7  
Notes: Where the reference relates to the whole document it must be sent in SG1. Where the reference is not the same in every line item (LIN) it must appear in every SG33, and not here.  
When the line number needs to be referenced in SG33 then document number may also be referenced in SG33 as well as here.  
At least one occurrence of SG1 is required to specify the despatch advice number, if not cancellation.

---

### **RFF Reference**

Function: A segment specifying a document reference number.  
Usage: M1

---

### **DTM Date/time/period**

Function: A segment specifying the date/time of the reference document.  
Usage: D 1

---

### **SG2 DOC-SG3**

Function: A group of segments identifying the discrepancies with the documentary requirements relating to the whole consignment.  
Usage: O..5  
Notes:

---

### **DOC Document/message details**

Function: A segment identifying a document where discrepancies occur.  
Usage: M1

---

### **SG3 CDI-INP**

Function: A group of segments reporting the physical or logical state of the document upon receipt and giving the appropriate instructions.  
Usage: R..2  
Notes:

---

### **CDI Physical or logical state**

Function: A segment reporting the physical or logical state of the document upon receipt.  
Usage: M1

---

### **INP Parties and instruction**

Function: A segment giving an instruction to send a replacement document.  
Usage: O 1

---

### **SG4 NAD-SG6**

Function: A group of segments identifying the parties involved and their associated information, relevant to the whole message.  
Usage: M2

Notes: Identification of the sender (consignor) and recipient (consignee) of the goods is mandatory in the Receiving Advice message.

---

**NAD Name and address**

---

Function: A segment identifying the function and coded identification, name and address of a party involved.  
Usage: M1

---

**SG6 CTA-COM**

---

Function: A group of segments giving contact details of the specific person or department within the identified party involved, to whom communication should be directed.  
Usage: O1  
Notes:

---

**CTA Contact information**

---

Function: A segment identifying a person or department, and their function.  
Usage: M1

---

**COM Communication contact**

---

Function: A segment identifying a communications type and number.  
Usage: O..3

---

**SG10 TDT-CDI**

---

Function: A group of segments specifying transport details and the discrepancy that has occurred.  
Usage: O1  
Notes: It should be noted that differences in the details of transport can only be flagged as a difference. It is not possible to indicate what the resultant action should be.

---

**TDT Transport information**

---

Function: A segment specifying the stage and mode of transport, the identification of the means of transport and the carrier information.  
Usage: M1

---

**CDI Physical or logical state**

---

Function: A segment indicating that an incorrect means of transportation was used.  
Usage: R1

---

**SG11 EQD-SG12-SG13**

---

Function: A group of segments identifying material handling equipment with which problems have occurred.  
Usage: D..10  
Notes: SG11 should only be sent if there is a problem to report.  
At least one of SG12 or SG13 should also be present.

---

**EQD Equipment details**

---

Function: A segment identifying a unit of equipment.  
Usage: M1

---

**SG12 CDI-INP**

---

Function: A group of segments reporting on the physical state of the identified equipment upon receipt and giving the appropriate instructions.  
Usage: D..2  
Notes:

---

**CDI Physical or logical state**

---

Function: A segment reporting the physical state of the equipment upon receipt.  
Usage: M1

---

**INP Parties and instruction**

---

Function: A segment giving an instruction to correct the reported discrepancy.  
Usage: O..2

---

**SG13 SEL-CDI**

---

Function: A group of segments identifying the seal numbers and reporting anomalies.  
Usage: D..25  
Notes:

---

**SEL Seal number**

---

Function: A segment specifying a seal number and its condition.  
Usage: M1

---

**CDI Physical or logical state**

---

Function: A segment identifying the anomaly with the seal.  
Usage: M..2

---

**SG16 CPS-SG20-SG25**

---

Function: A group of segments providing details about the individual received items, packaging details, variances, receipt conditions and instructions.  
Usage: D..9999  
Notes: There are different ways of using the CPS segment group depending on how you wish to present the details about the received items.

- The PACKAGE driven logic:

The despatch is described package by package, according to the physical structure of the packaging hierarchy, starting from the outer packages ending with the inner packages. The contained items are identified at the lowest level of the packaging structure. There is a one to one relationship between the CPS and PAC segments.

- The PRODUCT driven logic:

The despatch is described per product, all the packages containing one item being described, identified and associated to the corresponding item. There must be a one to one relationship between the CPS and LIN segments.

It is recommended that users of this guide adopt the PACKAGE driven logic. See the EXAMPLE section of the guide on how to use this segment group.

Package identification numbers will be placed in the GIN segment in SG23.

Use of SG20 and SG25 are dependent on whether there are any discrepancies.

---

**CPS Consignment packing sequence**

---

Function: A segment identifying the sequence in which physical packing is received in the consignment, e.g. boxes loaded onto a pallet.  
Usage: M1

---

**SG20 PAC-QVR-SG21**

---

Function: A group of segments identifying packaging, quantity variances, package identification, goods identity number, and receipt conditions.  
Usage: D..10  
Notes: The QVR segment in SG20 is only used when there are variances between what actually arrived and what was indicated in the Despatch Advice message.  
SG21 is only used if the physical state of the packages needs to be reported.

---

**PAC Package**

---

Function: A segment reporting the number and type of identical packages which were received.  
Usage: M1

---

**QVR Quantity variances**

---

Function: A segment specifying any quantity variances between the received number of packages and the accepted and despatched quantity.  
Usage: D 1

---

**SG21 PCI-SG23**

---

Function: A group of segments specifying markings and labels and related anomalies.  
Usage: D 1  
Notes: SG23 is only used if it is necessary to indicate package identification numbers of those packages that require their physical state to be reported.

---

**PCI Package identification**

---

Function: A segment indicating whether package markings are from the buyer or the seller.  
Usage: M 1

---

**SG23 GIN-SG24**

---

Function: A group of segments giving markings/identification numbers of the packages and the related anomalies.  
Usage: D ..99  
Notes:

---

**GIN Goods identity number**

---

Function: A segment giving the unique identification number of the package.  
Usage: M 1

---

**SG24 CDI-INP**

---

Function: A group of segments reporting the physical state of the identified package upon receipt and giving the appropriate instructions.  
Usage: R ..2  
Notes:

---

**CDI Physical or logical state**

---

Function: A segment reporting the physical state of the identified package upon receipt.  
Usage: M 1

---

**INP Parties and instruction**

---

Function: A segment giving an instruction to correct the reported discrepancy.  
Usage: O ..2

---

**SG25 LIN-QTY-QVR-SG28-SG31-SG33**

---

Function: A group of segments providing details of the line items i.e. individual received items within the packages described.  
Usage: D ..9999  
Notes: For each item corresponding to an occurrence of SG22, a line item number is required. The unique identification of the item may be provided in LIN CO C212, providing that it can be recognised by the receiver.

If an item has been delivered but not accepted it must be identified using a separate line item. In these cases the "received and accepted" quantities are zero. Such items might include unknown or not ordered products, excess deliveries, damaged goods, unacceptable product variants or batch numbers, different pack size, etc. Reason for the action is detailed in the QTY-QVR segments.

The QVR segment in SG25 should only be used if there are variances between what was received and either what was ordered, sent (as indicated in the Despatch Advice message), or accepted. Whenever the QVR segment is used then the QTY segment is needed.

---

**LIN Line item**

---

Function: A segment specifying a line item by its item number, and agreed to be the primary reference number between the buyer and seller.  
The segment also carries a sequence number assigned to the line item within the message.  
Usage: M 1

---

**QTY      Quantity**

---

Function: A segment giving the received quantity for the line item.  
Usage: D 1

---

**QVR      Quantity variances**

---

Function: A segment identifying quantity variances between the received quantity per line item and expected quantity per line item.  
Usage: D ..3

---

**SG28      CDI-INP**

---

Function: A group of segments reporting the physical state of the line item upon receipt and giving the appropriate instructions.  
Usage: O ..2  
Notes:

---

**CDI      Physical or logical state**

---

Function: A segment reporting the physical state of the line item upon receipt.  
Usage: M 1

---

**INP      Parties and instruction**

---

Function: A segment giving an instruction to correct the reported discrepancy.  
Usage: O ..4

---

**SG31      GIN-SG32**

---

Function: A group of segments giving goods identification numbers and related anomalies.  
Usage: O ..99  
Notes:

---

**GIN      Goods identity number**

---

Function: A segment providing identity numbers of goods received or missing.  
Usage: M 1

---

**SG32      CDI-INP**

---

Function: A group of segments reporting receiving conditions and providing instructions related to the identified goods.  
Usage: R ..2  
Notes:

---

**CDI      Physical or logical state**

---

Function: A segment reporting the receiving conditions for the identified goods.  
Usage: M 1

---

**INP      Parties and instruction**

---

Function: A segment giving an instruction to correct the reported discrepancy.  
Usage: O ..4

---

**SG33      RFF-DTM**

---

Function: A group of segments referencing documents and their dates/times, relating to the line item.  
Usage: A ..3

Notes: If a reference applies to the whole document or to all line items it should be sent at the header level (SG1).  
Where the document reference differs by line then use only this segment group. This segment group should not be used to override SG1.  
If the line number of the referenced document needs to be specified, both document and line number are specified in the RFF segment of SG33 even if the document number applies to the whole message. In this case the reference number may appear in both SG1 and SG33.  
The DTM segment must be sent where local law requires a date or expiry date of a reference document to be sent.

---

**RFF Reference**

Function: A segment specifying a document reference number.  
Usage: M1

---

**DTM Date/time/period**

Function: A segment specifying the date/time of the reference document.  
Usage: D1

---

**UNT Message trailer**

Function: A service segment ending, and providing information for checking the completeness of a message.  
Usage: M1



## SEGMENT DETAILS



### UNH Message header

Function: A service segment heading, and uniquely identifying a message.

Usage : M1

Notes : Refer to EDIFICE Utilisation of the UN/EDIFACT Service Segments, Issue EDSS10

Ref.	Rep.	Name		EDIFICE Utilisation
0062	an..14	M MESSAGE REFERENCE NUMBER	M	Transmission message count from 1
S009		M MESSAGE IDENTIFIER	M	
0065	an..6	M Message type	M	<b>RECADV</b> = Receiving advice message
0052	an..3	M Message version number	M	<b>D</b> = Draft version/UN/EDIFACT Directory
0054	an..3	M Message release number	M	<b>10A</b> = Release 2010 - A
0051	an..3	M Controlling agency, coded	M	<b>UN</b> = UN/CEFACT
0057	an..6	C Association assigned code	R	<b>EDRC10</b> = Receiving Advice Issue EDRC10
0110	an..6	C Code list directory version number	N	
0113	an..6	C Message type sub-function identification	N	
0068	an..35	C COMMON ACCESS REFERENCE	N	
S010		C STATUS OF THE TRANSFER	N	
0070	n..2	M Sequence of transfers	N	
0073	a1	C First and last transfer	N	
S016		C MESSAGE SUBSET IDENTIFICATION	N	
0115	an..14	M Message subset identification	N	
0116	an..3	C Message subset version number	N	
0118	an..3	C Message subset release number	N	
0051	an..3	C Controlling agency, coded	N	
S017		C MESSAGE IMPLEMENTATION GUIDELINE IDENTIFICATION	N	
0121	an..14	M Message implementation guideline identification	N	
0122	an..3	C Message implementation guideline version number	N	
0124	an..3	C Message implementation guideline release number	N	
0051	an..3	C Controlling agency, coded	N	
S018		C SCENARIO IDENTIFICATION	N	
0127	an..14	M Scenario identification	N	
0128	an..3	C Scenario version number	N	
0130	an..3	C Scenario release number	N	
0051	an..3	C Controlling agency, coded	N	

## BGM Beginning of message

Function: A segment uniquely identifying the message by means of its coded name, number and function.

Usage : M1

Notes : Cancellation:

When DE 1225 contains '1' then only the mandatory BGM, DTM and NAD segments need be sent in the message. The document number used in DE 1004 must be the same as in the original message.

Replace:

When DE 1225 contains '5' it has the effect of cancelling the original message and replacing it with this, so the entire message must be sent. The document number used in DE 1004 must be the same as in the original message.

Ref.	Rep.	Name		EDIFICE Utilisation
C002		C DOCUMENT/MESSAGE NAME	R	
1001	an..3	C Document name code	R	<b>632</b> = Goods receipt
1131	an..17	C Code list identification code	N	
3055	an..3	C Code list responsible agency code	N	
1000	an..35	C Document name	N	
C106		C DOCUMENT/MESSAGE IDENTIFICATION	R	
1004	an..70	C Document identifier	R	Receiving advice number assigned by the sender. The recommendation is to use a sequential number.
1056	an..9	C Version identifier	N	
1060	an..6	C Revision identifier	N	
1225	an..3	C MESSAGE FUNCTION CODE	R	<b>1</b> = Cancellation <b>5</b> = Replace <b>9</b> = Original
4343	an..3	C RESPONSE TYPE CODE	N	

**DTM Date/time/period**

Function: A segment specifying the date/time of creation of the message and the goods receipt date/time.

Usage : M..2

Notes : All dates and times are local dates and times to the place of activity being described. It is required to specify the date of issue of the message.

Ref.	Rep.	Name		EDIFICE Utilisation
C507		M DATE/TIME/PERIOD	M	
2005	an..3	M Date or time or period function code qualifier	M	<b>50</b> = Goods receipt date/time <b>137</b> = Document issue date time
2380	an..35	C Date or time or period text	R	
2379	an..3	C Date or time or period format code	R	<b>102</b> = CCYMMDD <b>102</b> = CCYMMDD <b>203</b> = CCYMMDDHHMM <b>205</b> = CCYMMDDHHMMZHHMM <i>Replaces EDIFICE code</i> <i>X03=CCYMMDDHHMMZZZZ</i> <b>303</b> = CCYMMDDHHMMZZZ <i>ZZZ = Time zone</i> <b>304</b> = CCYMMDDHHMMSSZZZ <i>ZZZ = Time zone</i>

**SG1 RFF-DTM**

**RFF Reference**

Function: A segment specifying a document reference number.  
 Usage : M1  
 Notes :

Ref.	Rep.	Name		EDIFICE Utilisation
C506		M REFERENCE	M	<b>AAK</b> = Despatch advice number <b>AAN</b> = Delivery schedule number <b>AAU</b> = Despatch note document identifier <b>CU</b> = Consignment identifier, consignor assigned <b>IV</b> = Invoice document identifier <b>ON</b> = Order document identifier, buyer assigned <b>SRN</b> = Shipment reference number <b>UCN</b> = Unique consignment reference number <b>VN</b> = Order number (vendor)
1153	an..3	M Reference code qualifier	M	
1154	an..70	C Reference identifier	R	
1156	an..6	C Document line identifier	N	
1056	an..9	C Version identifier	N	
1060	an..6	C Revision identifier	N	

**SG1 RFF-DTM****DTM Date/time/period**

Function: A segment specifying the date/time of the reference document.

Usage : D1

Notes : All dates and times are local.

Ref.	Rep.	Name		EDIFICE Utilisation
C507		M DATE/TIME/PERIOD	M	
2005	an..3	M Date or time or period function code qualifier	M	<b>171</b> = Reference date/time
2380	an..35	C Date or time or period text	R	
2379	an..3	C Date or time or period format code	R	<b>102</b> = CCYYMMDD <b>102</b> = CCYYMMDD <b>203</b> = CCYYMMDDHHMM <b>205</b> = CCYYMMDDHHMMZHHMM <i>Replaces EDIFICE code</i> <i>X03=CCYYMMDDHHMMZZZZ</i> <b>303</b> = CCYYMMDDHHMMZZZ <i>ZZZ = Time zone</i> <b>304</b> = CCYYMMDDHHMMSSZZZ <i>ZZZ = Time zone</i>

**SG2 DOC-SG3****DOC Document/message details**

Function: A segment identifying a document where discrepancies occur.

Usage : M1

Notes :

Ref.	Rep.	Name		EDIFICE Utilisation
C002		M DOCUMENT/MESSAGE NAME	M	
1001	an..3	C Document name code	R	<b>270</b> = Delivery note <b>271</b> = Packing list <b>325</b> = Proforma invoice <b>865</b> = Certificate of origin form GSP <b>954</b> = EUR 1 certificate of origin
1131	an..17	C Code list identification code	N	
3055	an..3	C Code list responsible agency code	N	
1000	an..35	C Document name	N	
C503		C DOCUMENT/MESSAGE DETAILS	N	
1004	an..70	C Document identifier	N	
1373	an..3	C Document status code	N	
1366	an..70	C Document source description	N	
3453	an..3	C Language name code	N	
1056	an..9	C Version identifier	N	
1060	an..6	C Revision identifier	N	
3153	an..3	C COMMUNICATION MEDIUM TYPE CODE	N	
1220	n..2	C DOCUMENT COPIES REQUIRED QUANTITY	N	
1218	n..2	C DOCUMENT ORIGINALS REQUIRED QUANTITY	N	

**SG3 CDI-INP**

**CDI Physical or logical state**

Function: A segment reporting the physical or logical state of the document upon receipt.

Usage : M1

Notes :

Ref.	Rep.	Name		EDIFICE Utilisation
7001	an..3	M PHYSICAL OR LOGICAL STATE TYPE CODE QUALIFIER	M	<b>1 = Upon receipt</b>  <b>2 = Missing</b> <b>3 = Wrong identification</b> <i>The information on the document is wrong</i> <b>4 = Damaged</b>
C564		M PHYSICAL OR LOGICAL STATE INFORMATION	M	
7007	an..3	C Physical or logical state description code	R	
1131	an..17	C Code list identification code	N	
3055	an..3	C Code list responsible agency code	N	
7006	an..70	C Physical or logical state description	N	

**SG3 CDI-INP**

**INP Parties and instruction**

Function: A segment giving an instruction to send a replacement document.

Usage : 01

Notes :

Ref.	Rep.	Name		EDIFICE Utilisation
C849		C PARTIES TO INSTRUCTION	N	<b>1</b> = Action required <b>AG</b> = Send replacement
3301	an..35	M Enacting party identifier	N	
3285	an..35	C Instruction receiving party identifier	N	
C522		C INSTRUCTION	R	
4403	an..3	M Instruction type code qualifier	M	
4401	an..3	C Instruction description code	R	
1131	an..17	C Code list identification code	N	
3055	an..3	C Code list responsible agency code	N	
4400	an..35	C Instruction description	N	
C850		C STATUS OF INSTRUCTION	N	
4405	an..3	M Status description code	N	
3036	an..70	C Party name	N	
1229	an..3	C ACTION CODE	N	



**SG4 NAD-SG6**
**NAD Name and address**

Function: A segment identifying the function and coded identification, name and address of a party involved.

Usage : M1

Notes : It is advised that the party identification CO C082 be used. When CO C082 cannot be used it is recommended to use the structured name and address CO C080 through DE 3207 rather than the unstructured one CO C058.

Ref.	Rep.	Name		EDIFICE Utilisation
3035	an..3	M PARTY FUNCTION CODE QUALIFIER	M	<b>CN</b> = Consignee <b>CZ</b> = Consignor  Code identifying the party  <b>9</b> = GS1 <b>16</b> = US, D&B (Dun & Bradstreet Corporation) <b>91</b> = Assigned by seller or seller's agent <b>92</b> = Assigned by buyer or buyer's agent
C082		C PARTY IDENTIFICATION DETAILS	A	
3039	an..35	M Party identifier	M	
1131	an..17	C Code list identification code	N	
3055	an..3	C Code list responsible agency code	R	
C058		C NAME AND ADDRESS	D	
3124	an..35	M Name and address description	M	
3124	an..35	C Name and address description	O	
3124	an..35	C Name and address description	O	
3124	an..35	C Name and address description	O	
C080		C PARTY NAME	D	
3036	an..70	M Party name	M	
3036	an..70	C Party name	O	
3036	an..70	C Party name	O	
3036	an..70	C Party name	O	
3036	an..70	C Party name	O	
3045	an..3	C Party name format code	N	
C059		C STREET	D	
3042	an..35	M Street and number or post office box identifier	M	
3042	an..35	C Street and number or post office box identifier	O	
3042	an..35	C Street and number or post office box identifier	O	
3042	an..35	C Street and number or post office box identifier	O	
3164	an..35	C CITY NAME	D	
C819		C COUNTRY SUBDIVISION DETAILS	C	
3229	an..9	C Country subdivision identifier	D	
1131	an..17	C Code list identification code	N	
3055	an..3	C Code list responsible agency code	N	
3228	an..70	C Country subdivision name	N	
3251	an..17	C POSTAL IDENTIFICATION CODE	D	
3207	an..3	C COUNTRY IDENTIFIER	D	Use ISO 3166, 2 alpha code

**SG6 CTA-COM**

**CTA Contact information**

Function: A segment identifying a person or department, and their function.

Usage : M1

Notes :

Ref.	Rep.	Name	EDIFICE Utilisation	
3139	an..3	C CONTACT FUNCTION CODE	R	<b>IC</b> = Information contact If a code is available use DE 3413, otherwise use DE 3412.
C056		C CONTACT DETAILS	R	
3413	an..17	C Contact identifier	D	
3412	an..256	C Contact name	D	

**SG6 CTA-COM****COM Communication contact**

Function: A segment identifying a communications type and number.

Usage : 0..3

Notes :

Ref.	Rep.	Name		EDIFICE Utilisation
C076		M COMMUNICATION CONTACT	M	
3148	an..512	M Communication address identifier	M	
3155	an..3	M Communication means type code	M	
				<b>EM</b> = Electronic mail <b>FX</b> = Telefax <b>TE</b> = Telephone

**SG10 TDT-CDI****TDT Transport information**

Function: A segment specifying the stage and mode of transport, the identification of the means of transport and the carrier information.

Usage : M1

Notes : Identification such as vehicle licence plate number may be provided in CO C222  
DE 8212 if the mode of transport is by road or maritime. Information provided here is actual, for example the actual licence plate of the vehicle.

Ref.	Rep.	Name		EDIFICE Utilisation
8051	an..3	M TRANSPORT STAGE CODE QUALIFIER	M	<b>13</b> = At destination
8028	an..17	C MEANS OF TRANSPORT JOURNEY IDENTIFIER	O	Used for flight or voyage number
C220		C MODE OF TRANSPORT	A	
8067	an..3	C Transport mode name code	R	<b>1</b> = Maritime transport <b>2</b> = Rail transport <b>3</b> = Road transport <b>4</b> = Air transport <b>5</b> = Mail <b>6</b> = Multimodal transport
8066	an..17	C Transport mode name	N	
C001		C TRANSPORT MEANS	N	
8179	an..8	C Transport means description code	N	
1131	an..17	C Code list identification code	N	
3055	an..3	C Code list responsible agency code	N	
8178	an..17	C Transport means description	N	
C040		C CARRIER	O	
3127	an..17	C Carrier identifier	A	Mutually defined code
1131	an..17	C Code list identification code	N	
3055	an..3	C Code list responsible agency code	A	<b>3</b> = IATA (International Air Transport Association) <b>9</b> = GS1 <b>11</b> = Lloyd's register of shipping <b>16</b> = US, D&B (Dun & Bradstreet Corporation) <b>91</b> = Assigned by seller or seller's agent <b>92</b> = Assigned by buyer or buyer's agent <b>166</b> = US, National Motor Freight Classification Association
3126	an..35	C Carrier name	D	Used if no coded name exchanged in DE 3127
8101	an..3	C TRANSIT DIRECTION INDICATOR CODE	N	
C401		C EXCESS TRANSPORTATION INFORMATION	N	
8457	an..3	M Excess transportation reason code	N	
8459	an..3	M Excess transportation responsibility code	N	
7130	an..17	C Customer shipment authorisation identifier	N	
C222		C TRANSPORT IDENTIFICATION	D	
8213	an..35	C Transport means identification name identifier	N	
1131	an..17	C Code list identification code	N	
3055	an..3	C Code list responsible agency code	N	
8212	an..70	C Transport means identification name	R	Vessel name or vehicle licence number
8453	an..3	C Transport means nationality code	O	Use ISO 3166, 2 alpha code
8281	an..3	C TRANSPORT MEANS OWNERSHIP INDICATOR CODE	N	

**SG10 TDT-CDI**

**CDI Physical or logical state**

Function: A segment indicating that an incorrect means of transportation was used.  
 Usage : R 1  
 Notes :

Ref.	Rep.	Name		EDIFICE Utilisation
7001	an..3	M PHYSICAL OR LOGICAL STATE TYPE CODE QUALIFIER	M	1 = Upon receipt
C564		M PHYSICAL OR LOGICAL STATE INFORMATION	M	
7007	an..3	C Physical or logical state description code	R	3 = Wrong identification
1131	an..17	C Code list identification code	N	
3055	an..3	C Code list responsible agency code	N	
7006	an..70	C Physical or logical state description	N	

**SG11 EQD-SG12-SG13****EQD Equipment details**

Function: A segment identifying a unit of equipment.

Usage : M1

Notes : In general, equipment is supplied by the haulier/carrier.

Ref.	Rep.	Name		EDIFICE Utilisation
8053	an..3	M EQUIPMENT TYPE CODE QUALIFIER	M	<b>BPN</b> = Box pallet non-exchangeable <b>CN</b> = Container <b>EFP</b> = Exchangeable EUR flat pallet <b>PA</b> = Pallet <b>TE</b> = Trailer <b>UL</b> = ULD (Unit load device)
C237		C EQUIPMENT IDENTIFICATION	A	
8260	an..17	C Equipment identifier	R	
1131	an..17	C Code list identification code	N	
3055	an..3	C Code list responsible agency code	N	
3207	an..3	C Country identifier	N	
C224		C EQUIPMENT SIZE AND TYPE	N	
8155	an..10	C Equipment size and type description code	N	
1131	an..17	C Code list identification code	N	
3055	an..3	C Code list responsible agency code	N	
8154	an..35	C Equipment size and type description	N	
8077	an..3	C EQUIPMENT SUPPLIER CODE	N	
8249	an..3	C EQUIPMENT STATUS CODE	N	
8169	an..3	C FULL OR EMPTY INDICATOR CODE	N	
4233	an..3	C MARKING INSTRUCTIONS CODE	N	

**SG12 CDI-INP**

**CDI Physical or logical state**

Function: A segment reporting the physical state of the equipment upon receipt.

Usage : M1

Notes :

Ref.	Rep.	Name		EDIFICE Utilisation
7001	an..3	M PHYSICAL OR LOGICAL STATE TYPE CODE QUALIFIER	M	<b>1</b> = Upon receipt  <b>2</b> = Missing <b>3</b> = Wrong identification <b>4</b> = Damaged
C564		M PHYSICAL OR LOGICAL STATE INFORMATION	M	
7007	an..3	C Physical or logical state description code	R	
1131	an..17	C Code list identification code	N	
3055	an..3	C Code list responsible agency code	N	
7006	an..70	C Physical or logical state description	N	

**SG12 CDI-INP**

**INP Parties and instruction**

Function: A segment giving an instruction to correct the reported discrepancy.

Usage : O..2

Notes :

Ref.	Rep.	Name		EDIFICE Utilisation
C849		C PARTIES TO INSTRUCTION	N	<b>1</b> = Action required <b>AG</b> = Send replacement <b>AH</b> = Pick-up
3301	an..35	M Enacting party identifier	N	
3285	an..35	C Instruction receiving party identifier	N	
C522		C INSTRUCTION	R	
4403	an..3	M Instruction type code qualifier	M	
4401	an..3	C Instruction description code	R	
1131	an..17	C Code list identification code	N	
3055	an..3	C Code list responsible agency code	N	
4400	an..35	C Instruction description	N	
C850		C STATUS OF INSTRUCTION	N	
4405	an..3	M Status description code	N	
3036	an..70	C Party name	N	
1229	an..3	C ACTION CODE	N	



**SG13 SEL-CDI**

**SEL Seal number**

Function: A segment specifying a seal number and its condition.

Usage : M1

Notes :

Ref.	Rep.	Name		EDIFICE Utilisation
9308	an..35	C TRANSPORT UNIT SEAL IDENTIFIER	M	<b>CA</b> = Carrier <b>CU</b> = Customs <b>SH</b> = Shipper
C215		C SEAL ISSUER	O	
9303	an..3	C Sealing party name code	R	
1131	an..17	C Code list identification code	N	
3055	an..3	C Code list responsible agency code	N	
9302	an..35	C Sealing party name	N	
4517	an..3	C SEAL CONDITION CODE	N	
C208		C IDENTITY NUMBER RANGE	N	
7402	an..35	M Object identifier	N	
7402	an..35	C Object identifier	N	
4525	an..3	C SEAL TYPE CODE	N	

**SG13 SEL-CDI**

**CDI Physical or logical state**

Function: A segment identifying the anomaly with the seal.

Usage : M..2

Notes :

Ref.	Rep.	Name		EDIFICE Utilisation
7001	an..3	M PHYSICAL OR LOGICAL STATE TYPE CODE QUALIFIER	M	<b>1</b> = Upon receipt  <b>2</b> = Missing <b>3</b> = Wrong identification <b>4</b> = Damaged
C564		M PHYSICAL OR LOGICAL STATE INFORMATION	M	
7007	an..3	C Physical or logical state description code	R	
1131	an..17	C Code list identification code	N	
3055	an..3	C Code list responsible agency code	N	
7006	an..70	C Physical or logical state description	N	

**SG16 CPS-SG20-SG25**

**CPS Consignment packing sequence**

Function: A segment identifying the sequence in which physical packing is received in the consignment, e.g. boxes loaded onto a pallet.

Usage : M1

Notes : DE 7166 is dependent on the usage of more than one packaging level, i.e. it will not be used if only one level of packing is being described.

Ref.	Rep.	Name	EDIFICE Utilisation	
7164	an..35	M HIERARCHICAL STRUCTURE LEVEL IDENTIFIER	M	Sequential numbering is recommended. The number remains unique within the message.
7166	an..35	C HIERARCHICAL STRUCTURE PARENT IDENTIFIER	D	Identifies the hierarchical link between packaging levels by containing the hierarchical Id (DE 7164) of the package at the higher level (its parent).
7075	an..3	C PACKAGING LEVEL CODE	N	

**SG20 PAC-QVR-SG21**

**PAC Package**

Function: A segment reporting the number and type of identical packages which were received.

Usage : M1

Notes : The term "received", used above, does not necessarily indicate that the goods have been accepted. If not applicable, use codes from another appropriate code set in combination with DE 1131/3055.

Ref.	Rep.	Name		EDIFICE Utilisation
7224	n..8	C PACKAGE QUANTITY	R	
C531		C PACKAGING DETAILS	N	
7075	an..3	C Packaging level code	N	
7233	an..3	C Packaging related description code	N	
7073	an..3	C Packaging terms and conditions code	N	
C202		C PACKAGE TYPE	R	
7065	an..17	C Package type description code	R	<b>BE</b> = Bundle <b>BG</b> = Bag <b>BX</b> = Box <b>CG</b> = Cage <b>CN</b> = Container, not otherwise specified as transport equipment <b>CR</b> = Crate <b>CS</b> = Case <b>CT</b> = Carton <b>DR</b> = Drum <b>EN</b> = Envelope <b>NE</b> = Unpacked or unpackaged <b>PC</b> = Parcel <b>PK</b> = Package <b>PX</b> = Pallet <b>RL</b> = Reel <b>SW</b> = Shrinkwrapped <b>TU</b> = Tube
1131	an..17	C Code list identification code	D	
3055	an..3	C Code list responsible agency code	D	
7064	an..35	C Type of packages	N	
C402		C PACKAGE TYPE IDENTIFICATION	N	
7077	an..3	M Description format code	N	
7064	an..35	M Type of packages	N	
7143	an..3	C Item type identification code	N	
7064	an..35	C Type of packages	N	
7143	an..3	C Item type identification code	N	
C532		C RETURNABLE PACKAGE DETAILS	N	
8395	an..3	C Returnable package freight payment responsibility code	N	
8393	an..3	C Returnable package load contents code	N	

**SG20 PAC-QVR-SG21****QVR Quantity variances**

Function: A segment specifying any quantity variances between the received number of packages and the accepted and despatched quantity.

Usage : D1

Notes : The variance is defined as follows:

Variance = Received quantity - Accepted or Despatched quantity.

Example:

80 despatched,

70 received (given in PAC, DE 7224), of which 65 were accepted.

Variance of received qty against despatched qty:  $70 - 80 = -10$  (10 short)

Variance of received qty against accepted qty :  $70 - 65 = 5$  (5 more)

Specified respectively by:

QVR+-10:12'

QVR+5:194+AF' (the difference of 5 between received and accepted quantities is due to damaged units)

Ref.	Rep.	Name		EDIFICE Utilisation
C279		C QUANTITY DIFFERENCE INFORMATION	R	
6064	n..15	M Variance quantity	M	Specify here the actual variance quantity. As shown on the above examples a minus sign means that the received quantity is smaller than the quantity given in this data element.
6063	an..3	C Quantity type code qualifier	R	<b>12</b> = Despatch quantity <i>As indicated in despatch advice/delivery note</i>
4221	an..3	C DISCREPANCY NATURE IDENTIFICATION CODE	O	<b>194</b> = Received and accepted <b>AC</b> = Over-shipped <b>AE</b> = Delivered but not advised <b>AF</b> = Goods delivered damaged <b>AG</b> = Delivered too late <b>CP</b> = Shipment partial - considered complete, no backorder
C960		C REASON FOR CHANGE	N	
4295	an..3	C Change reason description code	N	
1131	an..17	C Code list identification code	N	
3055	an..3	C Code list responsible agency code	N	
4294	an..35	C Change reason description	N	

**SG21 PCI-SG23**

**PCI Package identification**

Function: A segment indicating whether package markings are from the buyer or the seller.

Usage : M1

Notes : The value entered in this segment is only used to enable access to the following segments within this segment group.

Ref.	Rep.	Name		EDIFICE Utilisation
4233	an..3	C MARKING INSTRUCTIONS CODE	R	<b>16</b> = Buyer's instructions <b>17</b> = Seller's instructions
C210		C MARKS & LABELS	N	
7102	an..35	M Shipping marks description	N	
7102	an..35	C Shipping marks description	N	
7102	an..35	C Shipping marks description	N	
7102	an..35	C Shipping marks description	N	
7102	an..35	C Shipping marks description	N	
7102	an..35	C Shipping marks description	N	
7102	an..35	C Shipping marks description	N	
7102	an..35	C Shipping marks description	N	
7102	an..35	C Shipping marks description	N	
7102	an..35	C Shipping marks description	N	
8169	an..3	C FULL OR EMPTY INDICATOR CODE	N	
C827		C TYPE OF MARKING	N	
7511	an..3	M Marking type code	N	
1131	an..17	C Code list identification code	N	
3055	an..3	C Code list responsible agency code	N	

**SG23 GIN-SG24****GIN Goods identity number**

Function: A segment giving the unique identification number of the package.

Usage : M1

Notes : When using bar coding this information relates to the appropriate data identifiers that indicate Licence Plate.

The package identification numbers listed relate to those described in the Despatch Advice message.

Ref.	Rep.	Name	EDIFICE Utilisation	
7405	an..3	M OBJECT IDENTIFICATION CODE QUALIFIER	M	<b>ML</b> = Marking/label number <b>VZ</b> = Transport unit identification according to ISO/IEC 15459 <b>WA</b> = Indivisible transport unit according to ISO/IEC 15459 <b>WB</b> = Divisible transport unit according to ISO/IEC 15459
C208		M IDENTITY NUMBER RANGE	M	The first DE 7402 in the composite data element is the start of the consecutively numbered range, the second DE 7402 indicates the end of the range. If there is no range only the first DE 7402 is used. If the identity numbers are not sequential and part of a series (e.g. 1,3,10) then separate CO C208 and DE 7402 must be used for each identity number.
7402	an..35	M Object identifier	M	
7402	an..35	C Object identifier	D	
C208		C IDENTITY NUMBER RANGE	O	As for first CO C208
7402	an..35	M Object identifier	M	
7402	an..35	C Object identifier	D	
C208		C IDENTITY NUMBER RANGE	O	As for first CO C208
7402	an..35	M Object identifier	M	
7402	an..35	C Object identifier	D	
C208		C IDENTITY NUMBER RANGE	O	As for first CO C208
7402	an..35	M Object identifier	M	
7402	an..35	C Object identifier	D	
C208		C IDENTITY NUMBER RANGE	O	As for first CO C208
7402	an..35	M Object identifier	M	
7402	an..35	C Object identifier	D	

**SG24 CDI-INP**

**CDI Physical or logical state**

Function: A segment reporting the physical state of the identified package upon receipt.  
 Usage : M1  
 Notes :

Ref.	Rep.	Name		EDIFICE Utilisation
7001	an..3	M PHYSICAL OR LOGICAL STATE TYPE CODE QUALIFIER	M	<b>1 = Upon receipt</b>  <b>2 = Missing</b> <b>3 = Wrong identification</b> <b>4 = Damaged</b>
C564		M PHYSICAL OR LOGICAL STATE INFORMATION	M	
7007	an..3	C Physical or logical state description code	R	
1131	an..17	C Code list identification code	N	
3055	an..3	C Code list responsible agency code	N	
7006	an..70	C Physical or logical state description	N	



**SG24 CDI-INP**

**INP Parties and instruction**

Function: A segment giving an instruction to correct the reported discrepancy.  
 Usage : O..2  
 Notes :

Ref.	Rep.	Name		EDIFICE Utilisation
C849		C PARTIES TO INSTRUCTION	N	<b>1</b> = Action required <b>AG</b> = Send replacement <b>AH</b> = Pick-up
3301	an..35	M Enacting party identifier	N	
3285	an..35	C Instruction receiving party identifier	N	
C522		C INSTRUCTION	R	
4403	an..3	M Instruction type code qualifier	M	
4401	an..3	C Instruction description code	R	
1131	an..17	C Code list identification code	N	
3055	an..3	C Code list responsible agency code	N	
4400	an..35	C Instruction description	N	
C850		C STATUS OF INSTRUCTION	N	
4405	an..3	M Status description code	N	
3036	an..70	C Party name	N	
1229	an..3	C ACTION CODE	N	

**SG25 LIN-QTY-QVR-SG28-SG31-SG33**

**LIN Line item**

Function: A segment specifying a line item by its item number, and agreed to be the primary reference number between the buyer and seller.

The segment also carries a sequence number assigned to the line item within the message.

Usage : M1

Notes :

Ref.	Rep.	Name		EDIFICE Utilisation
1082	an..6	C LINE ITEM IDENTIFIER	R	This number is assigned by the sender of the message. The first line item within a message will be numbered 1 and further line items will be incremented by 1 for each new line.  Primary reference <b>BP</b> = Buyer's part number <b>EN</b> = International Article Numbering Association (EAN) <b>MF</b> = Manufacturer's (producer's) article number <b>SRV</b> = EAN.UCC Global Trade Item Number <b>SSS</b> = Distributor's article identifier <i>Replaces EDIFACT code DI=Distributor's part number</i> <b>UP</b> = UPC (Universal product code) <b>VP</b> = Vendor's (seller's) part number  <b>9</b> = GS1 <b>89</b> = Assigned by distributor <b>90</b> = Assigned by manufacturer <b>91</b> = Assigned by seller or seller's agent <b>92</b> = Assigned by buyer or buyer's agent <b>113</b> = GS1 US
1229	an..3	C ACTION CODE	N	
C212		C ITEM NUMBER IDENTIFICATION	R	
7140	an..35	C Item identifier	R	
7143	an..3	C Item type identification code	R	
1131	an..17	C Code list identification code	N	
3055	an..3	C Code list responsible agency code	R	
C829		C SUB-LINE INFORMATION	N	
5495	an..3	C Sub-line indicator code	N	
1082	an..6	C Line item identifier	N	
1222	n..2	C CONFIGURATION LEVEL NUMBER	N	
7083	an..3	C CONFIGURATION OPERATION CODE	N	

**SG25 LIN-QTY-QVR-SG28-SG31-SG33**

**QTY Quantity**

Function: A segment giving the received quantity for the line item.

Usage : D1

Notes : Variances should be reported in the QVR segment. If there are variances then this QTY segment is needed.

Ref.	Rep.	Name		EDIFICE Utilisation
C186		M QUANTITY DETAILS	M	
6063	an..3	M Quantity type code qualifier	M	<b>48</b> = Received quantity
6060	an..35	M Quantity	M	
6411	an..8	C Measurement unit code	R	<b>CLT</b> = centilitre <b>CMT</b> = centimetre <b>EA</b> = each <b>GRM</b> = gram <b>H87</b> = piece <b>KGM</b> = kilogram <b>KMT</b> = kilometre <b>LTR</b> = litre <b>MGM</b> = milligram <b>MMT</b> = millimetre <b>MTK</b> = square metre <b>MTQ</b> = cubic metre <b>MTR</b> = metre <b>PCE</b> = piece (*) EDIFICE Code 'PCE' is widely adopted by membership and preferred over the EDIFACT code 'H87' (*) EDIFICE code Other codes should be previously agreed between trading partners.

**SG25 LIN-QTY-QVR-SG28-SG31-SG33**

**QVR Quantity variances**

Function: A segment identifying quantity variances between the received quantity per line item and expected quantity per line item.

Usage : D..3

Notes : The variance is defined as follows:

Variance = Received quantity (QTY code 48) - Quantity (qualified in this QVR)

Example:

100 units were ordered,  
80 despatched,  
70 received (given in previous QTY), of which 65 were accepted.

Variance of received qty against ordered qty : 70 - 100 = -30 (30 short)

Variance of received qty against despatched qty: 70 - 80 = -10 (10 short)

Variance of received qty against accepted qty : 70 - 65 = 5 (5 more)

Specified respectively by:

QVR+-30:21'

QVR+-10:12'

QVR+5:194+AF' (the difference of 5 between received and accepted quantities is due to damaged units)

Ref.	Rep.	Name		EDIFICE Utilisation
C279		C QUANTITY DIFFERENCE INFORMATION	R	
6064	n..15	M Variance quantity	M	Specify here the actual variance quantity. As shown on the above examples a minus sign means that the received quantity is smaller than the quantity given in this data element.
6063	an..3	C Quantity type code qualifier	R	<b>12</b> = Despatch quantity <i>As indicated in despatch advice/delivery note</i>
4221	an..3	C DISCREPANCY NATURE IDENTIFICATION CODE	O	<b>21</b> = Ordered quantity <b>194</b> = Received and accepted <b>AC</b> = Over-shipped <b>AE</b> = Delivered but not advised <b>AF</b> = Goods delivered damaged <b>AG</b> = Delivered too late <b>CP</b> = Shipment partial - considered complete, no backorder
C960		C REASON FOR CHANGE	N	
4295	an..3	C Change reason description code	N	
1131	an..17	C Code list identification code	N	
3055	an..3	C Code list responsible agency code	N	
4294	an..35	C Change reason description	N	

**SG28 CDI-INP**

**CDI Physical or logical state**

Function: A segment reporting the physical state of the line item upon receipt.

Usage : M1

Notes :

Ref.	Rep.	Name		EDIFICE Utilisation
7001	an..3	M PHYSICAL OR LOGICAL STATE TYPE CODE QUALIFIER	M	<b>1 = Upon receipt</b>  <b>2 = Missing</b> <b>3 = Wrong identification</b> <b>4 = Damaged</b>
C564		M PHYSICAL OR LOGICAL STATE INFORMATION	M	
7007	an..3	C Physical or logical state description code	R	
1131	an..17	C Code list identification code	N	
3055	an..3	C Code list responsible agency code	N	
7006	an..70	C Physical or logical state description	N	

**SG28 CDI-INP**

**INP Parties and instruction**

Function: A segment giving an instruction to correct the reported discrepancy.

Usage : 0..4

Notes :

Ref.	Rep.	Name		EDIFICE Utilisation
C849		C PARTIES TO INSTRUCTION	N	
3301	an..35	M Enacting party identifier	N	
3285	an..35	C Instruction receiving party identifier	N	
C522		C INSTRUCTION	R	
4403	an..3	M Instruction type code qualifier	M	<b>1</b> = Action required
4401	an..3	C Instruction description code	R	<b>AA</b> = Send credit note
				<b>AB</b> = Change invoice
				<b>AG</b> = Send replacement
				<b>AH</b> = Pick-up
1131	an..17	C Code list identification code	N	
3055	an..3	C Code list responsible agency code	N	
4400	an..35	C Instruction description	N	
C850		C STATUS OF INSTRUCTION	N	
4405	an..3	M Status description code	N	
3036	an..70	C Party name	N	
1229	an..3	C ACTION CODE	N	

**SG31 GIN-SG32**

**GIN Goods identity number**

Function: A segment providing identity numbers of goods received or missing.

Usage : M1

Notes :

Ref.	Rep.	Name	EDIFICE Utilisation	
7405	an..3	M OBJECT IDENTIFICATION CODE QUALIFIER	M	<b>BN</b> = Serial number <b>BX</b> = Batch number The first DE 7402 in the composite element is the start of the consecutively numbered range, the second DE 7402 indicates the end of the range. If there is no range only the first DE 7402 is used. If the identity numbers are not sequential and part of a series (e.g. 1,3,and 10) then a separate CO C208 and DE 7402 must be used for each identity number.
C208		M IDENTITY NUMBER RANGE	M	
7402	an..35	M Object identifier	M	As for first CO C208
7402	an..35	C Object identifier	D	
C208		C IDENTITY NUMBER RANGE	O	As for first CO C208
7402	an..35	M Object identifier	M	
7402	an..35	C Object identifier	D	As for first CO C208
C208		C IDENTITY NUMBER RANGE	O	
7402	an..35	M Object identifier	M	As for first CO C208
7402	an..35	C Object identifier	D	
C208		C IDENTITY NUMBER RANGE	O	As for first CO C208
7402	an..35	M Object identifier	M	
7402	an..35	C Object identifier	D	As for first CO C208
C208		C IDENTITY NUMBER RANGE	O	
7402	an..35	M Object identifier	M	As for first CO C208
7402	an..35	C Object identifier	D	

**SG32 CDI-INP**

**CDI Physical or logical state**

Function: A segment reporting the receiving conditions for the identified goods.

Usage : M1

Notes :

Ref.	Rep.	Name		EDIFICE Utilisation
7001	an..3	M PHYSICAL OR LOGICAL STATE TYPE CODE QUALIFIER	M	<b>1 = Upon receipt</b>  <b>2 = Missing</b> <b>3 = Wrong identification</b> <b>4 = Damaged</b>
C564		M PHYSICAL OR LOGICAL STATE INFORMATION	M	
7007	an..3	C Physical or logical state description code	R	
1131	an..17	C Code list identification code	N	
3055	an..3	C Code list responsible agency code	N	
7006	an..70	C Physical or logical state description	N	



**SG32 CDI-INP**

**INP Parties and instruction**

Function: A segment giving an instruction to correct the reported discrepancy.

Usage : O..4

Notes :

Ref.	Rep.	Name		EDIFICE Utilisation
C849		C PARTIES TO INSTRUCTION	N	
3301	an..35	M Enacting party identifier	N	
3285	an..35	C Instruction receiving party identifier	N	
C522		C INSTRUCTION	R	
4403	an..3	M Instruction type code qualifier	M	<b>1</b> = Action required
4401	an..3	C Instruction description code	R	<b>AA</b> = Send credit note
				<b>AB</b> = Change invoice
				<b>AG</b> = Send replacement
				<b>AH</b> = Pick-up
1131	an..17	C Code list identification code	N	
3055	an..3	C Code list responsible agency code	N	
4400	an..35	C Instruction description	N	
C850		C STATUS OF INSTRUCTION	N	
4405	an..3	M Status description code	N	
3036	an..70	C Party name	N	
1229	an..3	C ACTION CODE	N	

**SG33 RFF-DTM**

**RFF Reference**

Function: A segment specifying a document reference number.

Usage : M1

Notes : Where references do not apply to the whole message they must appear here. When the order number is being referenced at the header level it may be referenced again here if the order line number needs to be indicated.

Ref.	Rep.	Name	EDIFICE Utilisation
C506		M REFERENCE	M
1153	an..3	M Reference code qualifier	M
1154	an..70	C Reference identifier	R
1156	an..6	C Document line identifier	D
1056	an..9	C Version identifier	N
1060	an..6	C Revision identifier	N

**EDIFICE Utilisation**

**IV** = Invoice document identifier  
**ON** = Order document identifier, buyer assigned  
**VN** = Order number (vendor)

As specified in DE 1153  
To hold the line number within the referenced document identified in the RFF segment (DE 1154). That is the case when DE 1153 = 'ON'.

**SG33 RFF-DTM****DTM Date/time/period**

Function: A segment specifying the date/time of the reference document.

Usage : D 1

Notes :

Ref.	Rep.	Name		EDIFICE Utilisation
C507		M DATE/TIME/PERIOD	M	
2005	an..3	M Date or time or period function code qualifier	M	<b>171</b> = Reference date/time
2380	an..35	C Date or time or period text	R	
2379	an..3	C Date or time or period format code	R	<b>102</b> = CCYMMDD <b>102</b> = CCYMMDD <b>203</b> = CCYMMDDHHMM <b>205</b> = CCYMMDDHHMMZHHMM <i>Replaces EDIFICE code</i> <i>X03=CCYMMDDHHMMZZZZ</i> <b>303</b> = CCYMMDDHHMMZZZ <i>ZZZ = Time zone</i> <b>304</b> = CCYMMDDHHMMSSZZZ <i>ZZZ = Time zone</i>

**UNT Message trailer**

Function: A service segment ending, and providing information for checking the completeness of a message.

Usage : M1

Notes : Refer to EDIFICE utilisation of the UN/EDIFACT service segments, Issue EDSS10

Ref.	Rep.	Name	EDIFICE Utilisation	
0074	n..10	M NUMBER OF SEGMENTS IN A MESSAGE	M	Count of all segments in the message, UNH and UNT included.
0062	an..14	M MESSAGE REFERENCE NUMBER	M	Must be the same reference number as in DE 0062 of the UNH segment of this message.

## **EXAMPLES**

The following examples provide help on how to use this message:

Example 1 - An example of a complete Receiving Advice response to a Despatch Advice based on the actual receipt.  
The example Despatch Advice is taken from the Despatch Advice message guide.

Example 2 - An example of a response indicating that there are no discrepancies.

Example 3 - Use of the Cancellation and Replace options.

## EXAMPLE 1

The following example is based on the example 4 found in the Despatch Advice (DESADV) message guide (Issue 1, D.97A).

The example is reproduced here with an example of a possible Receiving Advice response based on the following receipt conditions:

- The Packing List document is damaged and difficult to read
- Vehicle licence number does not match number in DESADV
- The seal on the vehicle is damaged.
- Pallet 2 only contains 2 boxes instead of the 3 detailed in the DESADV.
- Pallet 1 is missing 50 items from box 1.

DESPATCH ADVICE EXAMPLE: Details of International shipment going by road. Seller has responsibility for the transport of goods.

The following example of a Despatch Advice message provides the description of a shipment of goods that have been despatched by the supplier of the goods, identified as Company A. The buyer of the goods is identified as Company B and the warehouse where the goods are to be delivered to is identified as Location B.

The Despatch Advice, reference number 01-5678ML, is sent on the 20th April 2010 at 14:50. The goods to be despatched are a complete shipment of the goods purchased on the 17th April 2010 according to the buyer's purchase order number PO505054. They are despatched on the 20th April at 14:30 and are expected to arrive the next day at 12:00.

The Despatch Advice refers to a shipment of goods containing 2 pallets, each pallet uniquely identified by a bar coded serial shipping code.

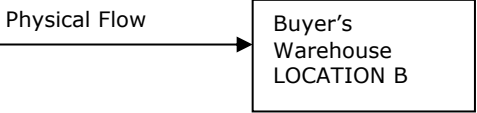
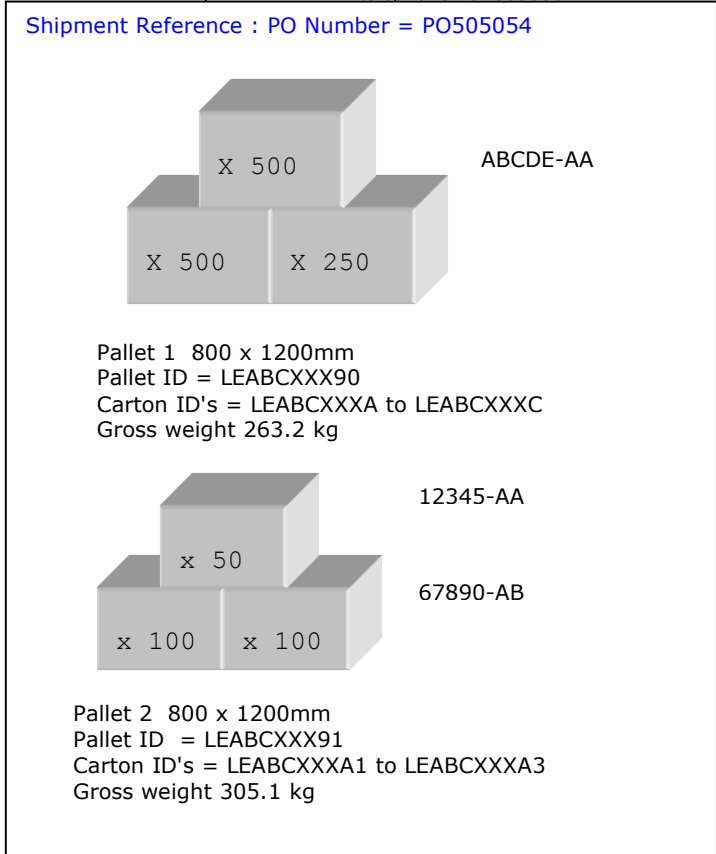
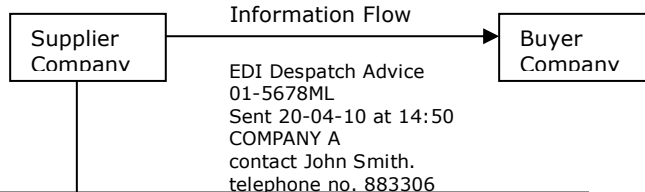
The first pallet is identified by a license plate LEABCXXX90 and contains 3 cartons of the product identified by the number ABCDE-AA, each carton containing a number of units. The pallet is a standard 800mm x 1200mm pallet with a gross weight of 263.2 kilograms.

The second pallet has a license plate of LEABCXXX91 and has a mixed product load; 1 carton of product 12345-AA, and 2 cartons of product 67890-AB. The pallet has the same dimensions as the first one with a gross weight of 305.1 kilograms.

Each of the cartons have their own associated bar-coded Package ID, i.e. a license plate number.

A contact code is given for Company A along with a telephone number.

The Despatch Advice describes the shipment as being composed of two pallets, providing for each pallet a description of the type of pallet in terms of dimensions and weight, as well as the pallet's unique identity number (serial shipping container code). The contents of each pallet is then described in terms of the despatch units it contains including the package serial number.



Reception of Goods:  
Despatched 20-04-10 at 14:30  
Est Arrival 21-04-10 at 12:00

The following example uses PACKAGE related logic i.e. there is a one to one relationship between the CPS and PAC segments.

UNB+UNOW:4+234567891:1:X+198765432:1:X+971201:1924+66+X:AA+RECADV++1+X+1'	
UNH+1+RECADV:D:10A:UN:EDRC10'	Message Header
BGM+632+93-777777+9'	Receipt number 93-777777
DTM+137:201004211450:203'	Date/time of receiving advice
DTM+50:201004211100:203'	Goods receipt date and time
RFF+AAK:93-5678ML'	Despatch Advice number
RFF+ON:PO505054'	Purchase Order number
DTM+171:20100417:102'	Date of PO
DOC+271'	Packing list
CDI+1+4'	Damaged
INP++1:AG'	Send replacement
NAD+CN+COMPANYA::91'	Consignor (sender of goods)
NAD+CZ+COMPANYB::91'	Consignee (receiver of goods)
TDT+13+++++:::H1235 CFD'	At destination vehicle licence plate
CDI+1+3'	Licence plate incorrect.
EQD+TE'	Trailer
SEL+ABCD123456+CU'	Trailer seal no. assigned by Customs
CDI+1+4'	Indicates seal is damaged
CPS+1'	1st unit load
PAC+1++SW'	Unit load is shrinkwrapped
PCI+17'	Labels/ID's supplied by seller
GIN+ML+ABCXXX90'	Unit identification
CPS+2+1'	Second level of description
PAC+1++BX'	1st box, 1st unit load
PCI+17'	Labels/ID's supplied by seller
GIN+ML+ABCXXXA'	Package ID of box
LIN+1++ABCDE-AA:VP::91'	First line item
QTY+48:450'	450 x ABCDE-AA received
QVR+-50:12'	Variance of 50 against despatched number
CDI+1+2'	Items missing
INP++1:AE'	Change invoice
CPS+3'	2nd unit load
PAC+2++BX'	Pallet contains 2 boxes
QVR+-1:12'	Variance of 1 vs despatched quantity
UNT+34+1'	Message Trailer
UNZ+1+66'	



EXAMPLE 2 - Indicating that there are no discrepancies.

UNB+UNOW:4+234567891:1:X+198765432:1:X+971201:1924+66+X:AA+RECADV++1+X+1'	
UNH+1+RECADV:D:10A:UN:EDRC10'	Message Header
BGM+632+93-777777+9'	Receipt number 93-777777
DTM+137:201004211450:203'	Date/time of receiving advice
DTM+50:201004211100:203'	Goods receipt date and time
RFF+AAK:93-5678ML'	Despatch Advice number
NAD+CN+COMPANYA::91'	Consignor (sender of goods)
NAD+CZ+COMPANYB::91'	Consignee (receiver of goods)
UNT+8+1'	Message Trailer
UNZ+1+66'	

EXAMPLE 3 - Use of Cancellation and Replace options

CANCELLATION

UNB+UNOW:4+234567891:1:X+198765432:1:X+971201:1924+66+X:AA+RECADV++1+X+1'	
UNH+1+RECADV:D:10A:UN:EDRC10'	Message Header
BGM+632+93-777777+9'	Receipt number 93-777777 cancelled
DTM+137:201004211450:203'	Date/time of receiving advice
NAD+CN+COMPANYA::91'	Consignor (sender of goods)
NAD+CZ+COMPANYB::91'	Consignee (receiver of goods)
UNT+6+1'	Message Trailer
UNZ+1+66'	

REPLACE

In this example the Seal and Vehicle licence information has been omitted.

UNB+UNOW:4+234567891:1:X+198765432:1:X+971201:1924+66+X:AA+RECADV++1+X+1'	
UNH+1+RECADV:D:10A:UN:EDRC10'	Message Header
BGM+632+93-777777+5'	Replace previous RECADV with this.
DTM+137:201004211450:203'	Date/time of receiving advice
DTM+50:201004211100:203'	Goods receipt date and time
RFF+AAK:93-5678ML'	Despatch Advice number
RFF+ON:PO505054'	Purchase Order number
DTM+171:20100417:102'	Date of PO
DOC+271'	Packing list
CDI+1+4'	Damaged
INP++1:AG'	Send replacement
NAD+CN+COMPANYA::91'	Consignor (sender of goods)
NAD+CZ+COMPANYB::91'	Consignee (receiver of goods)
CPS+1'	1st unit load
PAC+1++SW'	Unit load is shrinkwrapped
PCI+17'	Labels/ID's supplied by seller
GIN+ML+ABCXXX90'	Unit identification
CPS+2+1'	Second level of description
PAC+1++BX'	1st box, 1st unit load
PCI+17'	Labels/ID's supplied by seller
GIN+ML+ABCXXXA'	Package ID of box
LIN+1++ABCDE-AA:VP::91'	First line item
QTY+48:450'	450 x ABCDE-AA received
QVR+-50:12'	Variance of 50 against despatched number
CDI+1+2'	Items missing
INP++1:AE'	Change invoice
CPS+3'	2nd unit load
PAC+2++BX'	Pallet contains 2 boxes
QVR+-1:12'	Variance of 1 vs despatched quantity
UNT+29+1'	Message Trailer
UNZ+1+66'	