



The Global Network for B2B Integration in High Tech Industries

## **EDIFICE Message Implementation Guideline Request for Quote**

**DELFOR Issue EDDF10**

**Endorsed on 15 June 2011**

**Based on UN/EDIFACT D.10A DELFOR message**

Copyright ©EDIFICE 2011

All rights reserved. No part of this publication may be reproduced or transmitted in any form or by any means without prior permission of EDIFICE.

Notwithstanding the fact that the utmost care has been observed in the collecting, drawing up and formulating of data, EDIFICE can under no circumstances be held liable for errors, omissions or misinterpretations as a result of the information compiled in the guidelines.

EDIFICE  
The Global Network for B2B Integration in High Tech industries  
EDIFICE secretariat  
Dora Cresens  
Tiensestraat 12  
B-3320 Hoegaarden  
Belgium  
Tel: +32 475 85 40 39  
Email: Dora.Cresens@edifice.org

## **TABLE OF CONTENTS**

COMPARISON TO PREVIOUS ISSUE .....	3
EDIFICE FUNCTIONAL DEFINITION .....	6
REFERENCES .....	7
EXPLANATORY NOTES .....	7
MESSAGE STRUCTURE CHART.....	8
BRANCHING DIAGRAM .....	9
SEGMENT DESCRIPTION .....	12
SEGMENT DETAILS .....	17
EXAMPLES .....	52

## **COMPARISON TO PREVIOUS ISSUE**

### **Issue EDDF10 of 1 June 2011: Upgrade to UN/EDIFACT Directory D.10A**

EDIFICE recommends to make use of EDIFACT code lists.

1. Where possible the earlier references to UN/ECE Recommendations were removed and EDIFACT qualifiers are used instead.
2. A number of EDIFICE defined qualifiers were replaced with relevant EDIFACT qualifiers or were completely removed when not in use. In some cases new EDIFICE qualifiers were defined since the old qualifiers have been included in the EDIFACT code list with a different definition

The summary of changes in this MIG is listed below:

<b>Place</b>	<b>EDIFICE Code (*)</b>	<b>Replaced with EDIFACT code/EDIFICE code (*)/Removed/Added</b>
All DTM-2005	X03=CCYMMDDHHMMZZZZZ (*) X04=CCYMMDDHHMMSSZZZZZ (*)	205=CCYMMDDHHMMZHHMM Removed
SG12-PIA/LIN-7143	DI=Distributor 's part number(*)	SSS= Distributor's article identifier
SG17-DTM	Usage R12	Corrected: Usage O1
SG19-RFF-1153	FDS=Firm Delivery Schedule Reference number (*)	AAN=Delivery Schedule number
SG21-PAC-7065	TRY90=Standard Tray REL90=Standard Reel RAL90=Standard Rail BLK90= Standard Bulk	PU=Tray RL=Reel Removed Removed

### **Issue EDDF08 of 17 August 2008:**

- Upgrade to UN/EDIFACT Directory/Code List D.08A which implies the following changes:
- SG6-GIS changed name to GEI + the segment's new structure
- SG15-SG20 are now SG16-SG21
- SG22-SG23 are now SG23-SG24
- SG32 PRI-CUX was added to allow the transfer of Price/Currency information

Data Element format changes :

- \* 1131 Code List Identification Code \* Format:'an..3' ---> 'an..17'
- \* 1154 Reference Identifier \* Format:'an..35' ---> 'an..70'
- \* 3224 Location Name \* Format:'an..70' ---> 'an..256'
- \* 3225 Location Identifier \* Format:'an..25' ---> 'an..35'
- \* 3251 Postal Identification Code \* Format:'an..9' ---> 'an..17'
- \* 3412 Contact Name \* Format:'an..35' ---> 'an..256'
- \* 6060 Quantity \* Format:'n..15' ---> 'an..35'
- \* 6411 Measurement unit code \* Format:'an..3' ---> 'an..8'
- \* 7008 Item Description \* Format:'an..35' ---> 'an..256'

Issue EDDF07 of 1 June 2005:

- Upgrade to UN/EDIFACT Code list D.04B
- Replacement of EDIFICE codes with standard codes.
- SG20 - PAC - DE 7065:
  - 'CN' Container replaced with 'CN' Container, not otherwise specified as transport equipment
  - 'PE' Pallet replaced with 'PX' Pallet

5 August 2003

- Example 4 Planning Forecast with Consignment Stock
- The buyer provides regular forecasts of 'nett' requirements was changed to 'gross' requirements.

Issue EDDF06 of 21 May 2003

- SG22 addition of Note : EDIFICE does not make use of the EDIFACT Mandatory SG27.
- SG6 GIS DE 7365 – replace qualifier 'ZZZ' with EDIFACT qualifer '94' Delivery point driven scheduling method
- EDIFIX 4.2 Technical upgrade; review and correction of examples

Issue EDDF06 of 13 November 2002 is based on UN/EDIFACT D98.B / Code List D01.A

- Addition of the following code value:
  - o SG12, LIN segment, CO C212, DE 7143 code 'SRV' EAN.UCC Global Trade Item Number

- o SG12, PIA segment, CO C212, DE 7143 code 'SRV' EAN.UCC Global Trade Item Number
- o SG15, QTY segment, CO C186, DE 6063 code '152' Consignment stock

**Issue EDDF05, Publication date 29 May 2002 – addition of recommended set of DTM qualifiers**

**Issue EDDF05 is based on the DELFOR D.98B which includes the changes related to the DMR raised in EDDF04.**

- SG15 occurrence increased to 99
- UNH DE 0054 Message release number : 98B
- UNH DE 0057 Association assigned code: EDDF05

Additional changes recorded in D.98B:

- SG12, IMD segment, addition of CO C272, DE 7081, DE 1131, DE 3055
- RFF segments addition of DE 1060

Release EDDF04 includes the changes that have been made to the issue 3 of the Delivery Schedule document endorsed by the EDIFICE Plenary on 9 April 1997. The changes are as follows:

- Recast from the 92.1 version of the UN/EDIFACT directory to the D.97A version,

- Addition of the following code values:

all DTM segments, DE 1153, codes '301' YMMDDHHMMZZZ  
'303' CCYMMDDHHMMZZZ

SG1, RFF segment, DE 1153, codes	'GC'	Government contract number
	'PR'	Price quote number
SG12, LIN segment, DE 7143, codes	'DI'	Distributor's part number
	'MF'	Manufacturer's (producer's) article number
SG12, LIN segment, DE 3055, codes	'89'	Assigned by distributor
	'90'	Assigned by manufacturer
SG12, PIA segment, DE 7143, codes	'AA'	Product version number
	'CL'	Color number
	'CV'	Customs article number
	'DI'	Distributor's part number
	'MF'	Manufacturer's (producer's) article number
	'MN'	Model number
	'SG'	Standard group of products (mixed assortment)
	'SN'	Serial number
SG12, PIA segment, DE 3055, codes	'89'	Assigned by distributor
	'90'	Assigned by manufacturer
SG12, IMD segment, DE 7077, codes	'C'	Code (from industry code list)
	'F'	Free-form
SG13, RFF segment, DE 1153, codes	'GC'	Government contract number
	'PR'	Price quote number
SG15, DTM segment, DE 2005, code	'LSD'	Liability start date
SG18, QTY segment, DE 6063, codes	'18'	Previous quantity
	'21'	Order quantity
	'85'	Previous order quantity to be cancelled
	'94'	Substitutional quantity
SG19, RFF segment, DE 1153, code	'FDS'	Firm delivery schedule reference number,

- Addition of the following segment groups/segments:

SG1, DTM segment  
SG3, RFF segment  
SG6  
SG7, LOC segment  
SG11  
SG12, GIN segment  
SG13, DTM segment  
SG16, DTM segment  
SG19, DTM segment  
SG20, QTY segment  
SG22  
SG23,

- Deletion of the following code values:

SG2, NAD segment, DE 3035, codes 'DP'  
'FW'  
'IV'  
SG19, RFF segment, DE 1153, codes 'BO'  
'CT',

- Deletion of the following segment groups/segments: SG29, SG30

- Usage changed for the following segment groups/segments/data elements:

BGM segment,		CO C002,	DE 3055,	X to D
	CO C106,	DE 1255,	X to A	
SG1, RFF segment,	CO C506,	DE 1156,	X to O	
SG4, CTA segment,	CO C056,	DE 3412,	A to D	
SG12, LIN segment,	CO C212,	R to A		
SG12, IMD segment,	DE 7077,	X to D		
SG12, IMD segment,	DE 7081,	R to O		
SG12, IMD segment,	CO C273,	X to D		
SG13, RFF segment,	CO C506, DE 1154,	D to R		
SG13, RFF segment,	CO C506,	DE 1156,	D to O	
SG20, PAC segment,	DE 7224,	O to N		
SG20, PAC segment,	CO C202,	DE 3055,	R to D,	

- Where UN/ECE Recommendations are referenced the most commonly used codes have been identified,
- Alignment of segments and composite data elements to ensure conformance (data harmonization) across all EDIFICE Implementation Guidelines,
- Update of the REFERENCES and EXPLANATORY NOTES section to comply with the EDIFICE Standards for Documentation of Message Implementation Guidelines issue 3,
- Update of examples,
- Documentation adjustments resulting from the use of GEFEG's EdiFix Message Implementation Guidelines documentation tool,
- Correction of typographical errors.

## **EDIFICE FUNCTIONAL DEFINITION**

The Delivery Schedule message (DELFOR) is defined as a message from a party who is planning the use or consumption of products to a party who has to plan for the supply of products. The message gives the requirements regarding details for short term delivery and/or medium to long term scheduling of products. The scheduling can be used to authorise manufacturing and/or the provision of materials. This is based on the terms and conditions defined in a blanket purchase order or contract and covers the liability commitments of the buyer.

### Principles

The Delivery Schedule message may be used to:

- specify firm delivery dates and the quantities scheduled (using segment SCC, DE 4017 Delivery Plan Status Indicator coded as "Firm" (1))
- specify forecasted production requirements (using SCC, DE 4017 coded as "commitment for material and manufacturing" (2), "commitment for material" (3), or "planning/forecast" (4))
- define the aspects that guarantee the synchronisation between the supplying and receiving parties, thus allowing the supplier to plan for the resources necessary to fulfil the customer's requirements
- enable the operation of forecast-based Supplier Managed Inventory principles, in which the supplier is informed of the customer's minimum, maximum and actual inventory on hand and takes the responsibility for determining at what date and with what quantity to replenish the customer's stocks

This message will normally be used where trading partners have a stable trading environment, and multiple deliveries of stable product requirements exist. This does not mean flat or level requirements, but rather managed upside or downside fluctuations.

The EDIFICE guideline for DELFOR supports the delivery point driven scheduling method only.

This is when, for a given delivery point, a number of different products are to be delivered. This means that address information triggers product information.

EDIFICE strongly recommends usage restricted to a single delivery point.

The association to a previous Delivery Schedule message is given by referencing the appropriate document/message number. Each schedule is seen as the latest statement of requirements, replacing previous schedules if they existed.

## **REFERENCES**

Refer to the document : Reference list for the EDIFICE message guidelines – Issue 1

## **EXPLANATORY NOTES**

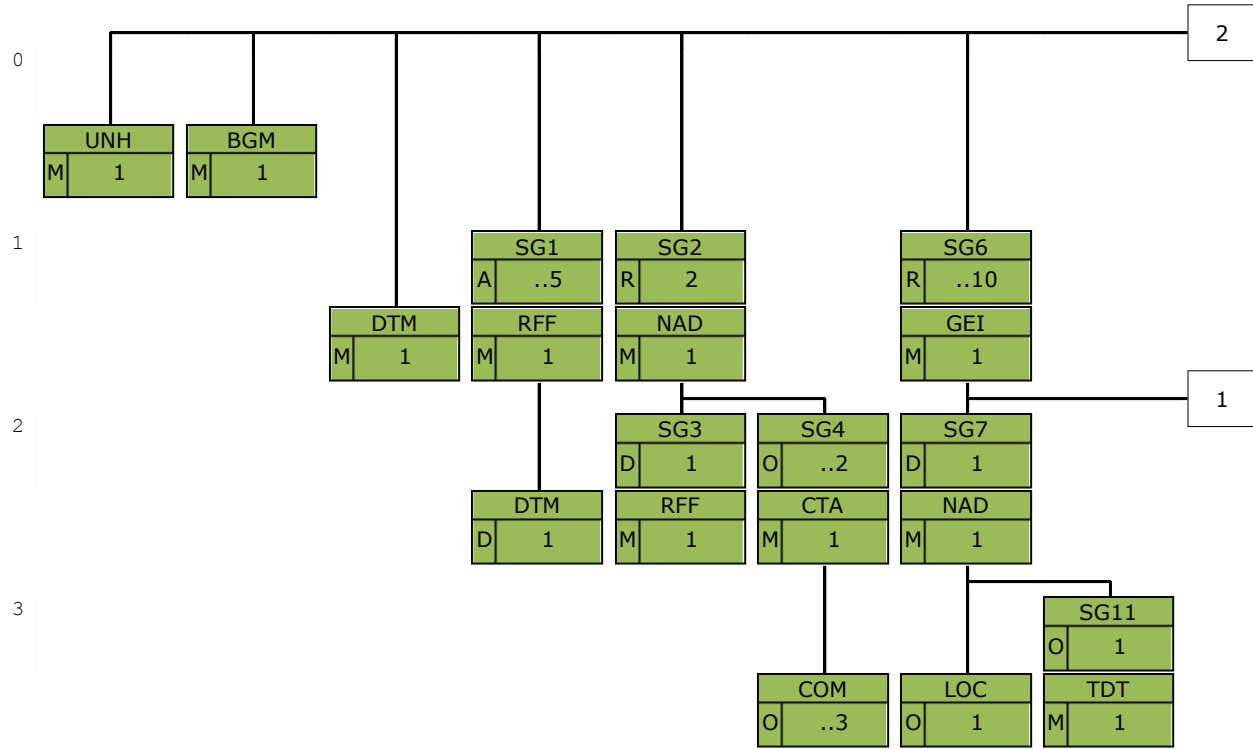
Refer to the document : Explanatory notes for the EDIFICE message guidelines – Issue 1

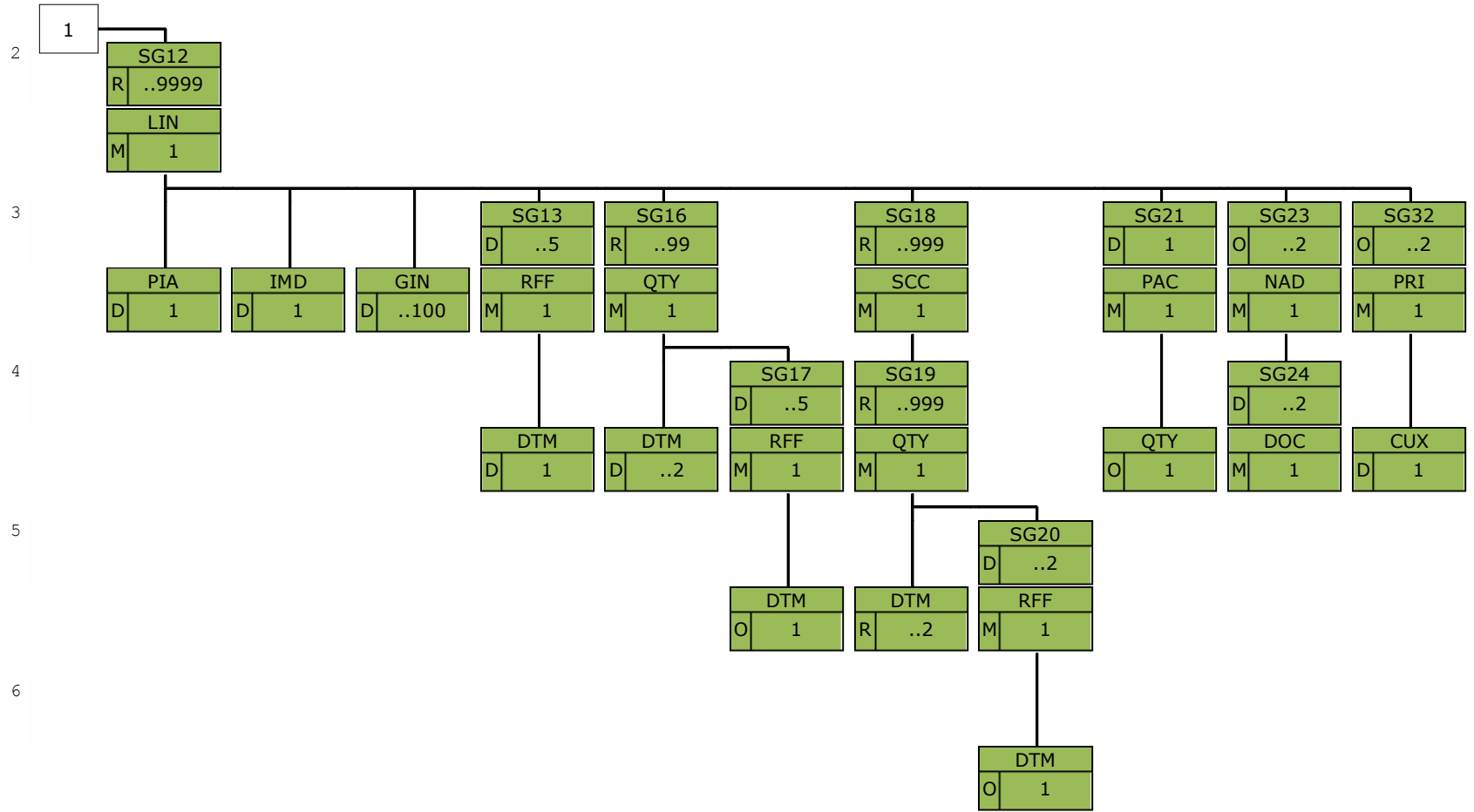
## MESSAGE STRUCTURE CHART

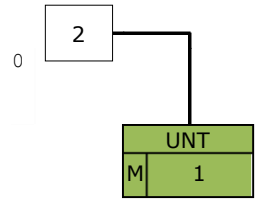
UNH	Message header	M1
BGM	Beginning of message	M1
DTM	Date/time/period	M1
SG1		A..5
RFF	Reference	M1
DTM	Date/time/period	D1
SG2		R2
NAD	Name and address	M1
SG3		D1
RFF	Reference	M1
SG4		O..2
CTA	Contact information	M1
COM	Communication contact	O..3
SG6		R..10
GEI	Processing information	M1
SG7		D1
NAD	Name and address	M1
LOC	Place/location identification	O1
SG11		O1
TDT	Transport information	M1
SG12		R..9999
LIN	Line item	M1
PIA	Additional product id	D1
IMD	Item description	D1
GIN	Goods identity number	D..100
SG13		D..5
RFF	Reference	M1
DTM	Date/time/period	D1
SG16		R..99
QTY	Quantity	M1
DTM	Date/time/period	D..2
SG17		D..5
RFF	Reference	M1
DTM	Date/time/period	O1
SG18		R..999
SCC	Scheduling conditions	M1
SG19		R..999
QTY	Quantity	M1
DTM	Date/time/period	R..2
SG20		D..2
RFF	Reference	M1
DTM	Date/time/period	O1
SG21		D1
PAC	Package	M1
QTY	Quantity	O1
SG23		O..2
NAD	Name and address	M1
SG24		D..2
DOC	Document/message details	M1
SG32		O..2
PRI	Price details	M1
CUX	Currencies	D1
UNT	Message trailer	M1



**BRANCHING DIAGRAM**







## **SEGMENT DESCRIPTION**

---

### **UNH    Message header**

Function: A service segment heading, and uniquely identifying the message.  
Usage: M1

---

### **BGM    Beginning of message**

Function: A segment uniquely identifying the message by means of its coded name, number and function.  
Usage: M1

---

### **DTM    Date/time/period**

Function: A segment specifying the date/time of creation of the message.  
Usage: M1

---

### **SG1    RFF-DTM**

Function: A group of segments referencing documents and their dates, relating to the whole message.  
Usage: A..5  
Notes: Reference segments specifying contract or previous delivery schedule information should be present, preferably at header level. If this information is given at detail level, it must not appear here.  
The DTM segment must be sent where local law requires the date of a reference document to be sent.

---

### **RFF    Reference**

Function: A segment specifying a document reference number and its appropriate line number.  
Usage: M1

---

### **DTM    Date/time/period**

Function: A segment specifying the date/time of the reference document.  
Usage: D1

---

### **SG2    NAD-SG3-SG4**

Function: A group of segments identifying the parties involved and their associated information, relevant to the whole message.  
Usage: R2  
Notes: SG3 is used if EC regulations and/or country law requires reference numbers to be sent.

---

### **NAD    Name and address**

Function: A segment identifying the function and coded identification, name and address of a party involved.  
Usage: M1

---

### **SG3    RFF**

Function: A group of segments giving references relating to the identified buying party involved.  
Usage: D1  
Notes:

---

### **RFF    Reference**

Function: A segment specifying a company specific reference.  
Usage: M1

---

### **SG4    CTA-COM**

Function: A group of segments giving contact details of the specific person or department within the identified buying party involved, to whom communication should be directed.  
Usage: O..2  
Notes: This segment group will only be used under the NAD identifying the buyer.

---

### **CTA    Contact information**

Function: A segment identifying a person or department, and their function.  
Usage: M1

---

**COM      Communication contact**

---

Function: A segment identifying a communications type and number.  
Usage: O..3

---

**SG6      GEI-SG7-SG12**

---

Function: A group of segments indicating the scheduling method used, identifying the delivery points and related information, and providing inventory and delivery details of the individual line items i.e. ordered/forecasted products.  
Usage: R..10  
Notes: SG7 must be sent if a firm delivery plan is specified in SG17.

---

**GEI      Processing information**

---

Function: A segment indicating that the delivery point scheduling method is used.  
Usage: M1

---

**SG7      NAD-LOC-SG11**

---

Function: A group of segments identifying a delivery point and its associated information.  
Usage: D1  
Notes:

---

**NAD      Name and address**

---

Function: A segment identifying the coded identification, name and address of the delivery point.  
Usage: M1

---

**LOC      Place/location identification**

---

Function: A segment identifying a specific location or place at the delivery point.  
Usage: O1

---

**SG11      TDT**

---

Function: A group of segments specifying transport details.  
Usage: O1  
Notes: Used only if details of transport need to be conveyed.

---

**TDT      Transport information**

---

Function: A segment specifying for the main-carriage stage the mode of transport and the carrier information.  
Usage: M1

---

**SG12      LIN-PIA-IMD-GIN-SG13-SG16-SG18-SG21-SG23-SG32**

---

Function: A group of segments providing inventory, delivery details and liability for the individual line items.  
Usage: R..9999  
Notes: The PIA segment is dependent on whether the primary reference to the line item being ordered/forecasted is insufficient to identify the item.  
The IMD segment is used to provide an additional description of the primary reference to the line item being ordered/forecasted. It may also be used for items that can not be identified by a code or article number.  
The GIN segment is used to provide identity numbers to be applied to the line item.  
SG13 is used to define references which must be associated with specific line items.  
SG20 is used to specify any alternative packaging methods which have been agreed between trading partners.  
The measure unit qualifier (DE 6411) must be agreed between trading partners and explicitly identified consistently across SG15 and SG18.

---

**LIN      Line item**

---

Function: A segment identifying a line item by its item number, and agreed to be the primary reference number between the buyer and seller.  
The segment also carries a sequence number assigned to the line item within the message.  
Usage: M1

---

**PIA      Additional product id**

---

Function: A segment providing additional identification numbers for the line item.  
Usage: D 1

---

**IMD Item description**

---

Function: A segment specifying ship to stock or ship to line quality and/or an additional description in clear or coded form, for the line item.  
Usage: D 1

---

**GIN Goods identity number**

---

Function: A segment providing identity numbers to be applied to the line item.  
Usage: D..100

---

**SG13 RFF-DTM**

---

Function: A group of segments specifying references for the line item.  
Usage: D..5  
Notes: Where the RFF at header level could not be used to specify the appropriate reference number it should appear here. Where the header level RFF gives the previous delivery schedule and/or contract information it must not appear here.  
The DTM segment must be sent where local law requires the date of a reference document to be sent.

---

**RFF Reference**

---

Function: A segment specifying a document reference number and its appropriate line number.  
Usage: M 1

---

**DTM Date/time/period**

---

Function: A segment specifying the date/time of the reference document.  
Usage: D 1

---

**SG16 QTY-DTM-SG17**

---

Function: A group of segments specifying non-schedule related quantity information for the line item.  
Usage: R..99  
Notes: This matrix shows how QTY, DTM and RFF segments are used.

	QTY	DTM	RFF
	DE 6063	DE 2005	DE 1153
	-----	-----	-----
Cumulative quantity	3	-	-
Received quantity	48	50	AAK/PK/SRN/TN
Quantity withdrawn	58	158/159	IV/TN (O) *
Committed quantity	66	612 (O) *	-
Cumulative quantity received	70	-	-
Backorder quantity	83	-	-
Minimum inventory	97	158/159(O) *	-
Maximum inventory	98	158/159(O) *	-
Actual stock	145	366	-
Consignment stock	152	366	-

\* Usage (O) Optional

---

**QTY Quantity**

---

Function: A segment specifying a quantity.  
Usage: M 1

---

**DTM Date/time/period**

---

Function: A segment specifying a date/time related to the quantity.  
Usage: D..2

---

**SG17 RFF-DTM**

---

Function: A group of segments specifying references for quantities received or consumed from inventory.

Usage: D..5  
Notes:

---

**RFF Reference**

---

Function: A segment specifying a document reference number and its appropriate line number, identifying the quantity received or consumed from inventory.  
Usage: M1

---

**DTM Date/time/period**

---

Function: A segment specifying the date/time of the reference document.  
Usage: O1

---

**SG18 SCC-SG19**

---

Function: A group of segments specifying schedule related quantity information for the line item.  
Usage: R..999  
Notes: Trading partners have to agree to specifying either a single SCC segment group relating to all following QTY-DTM segment groups or one SCC segment group for each QTY-DTM segment group. The same method must be used consistently throughout the whole message.

---

**SCC Scheduling conditions**

---

Function: A segment specifying information on the liability commitment of the buyer to this schedule.  
Usage: M1

---

**SG19 QTY-DTM-SG20**

---

Function: A group of segments specifying the delivery dates and quantities scheduled.  
Usage: R..999  
Notes: SG19 is only used when it is necessary to give different references for each delivery.

---

**QTY Quantity**

---

Function: A segment specifying a quantity.  
Usage: M1

---

**DTM Date/time/period**

---

Function: A segment specifying the corresponding time-frame i.e. horizon start and end date/time or discrete date/time of the quantity.  
Usage: R..2

---

**SG20 RFF-DTM**

---

Function: A group of segments providing references for the quantity.  
Usage: D..2  
Notes:

---

**RFF Reference**

---

Function: A segment specifying a document reference number and its appropriate line number.  
Usage: M1

---

**DTM Date/time/period**

---

Function: A segment specifying the date/time of the reference document.  
Usage: O1

---

**SG21 PAC-QTY**

---

Function: A group of segments specifying product packaging information for the line item.  
Usage: D1  
Notes:

---

**PAC Package**

---

Function: A segment specifying the product package type.  
Usage: M1

---

**QTY      Quantity**

---

Function: A segment specifying the number of products contained in the package type.  
Usage: O1

---

**SG23      NAD-SG24**

---

Function: A group of segments identifying the parties involved and their associated information, for the line item.  
Usage: O..2  
Notes: SG23 is only used when DE 3055 in NAD = 'BY'  
EDIFICE does not make use of the EDIFACT Mandatory SG27.

---

**NAD      Name and address**

---

Function: A segment identifying the buyer as the party requesting the certificates, or identifying the manufacturer's code, for the line item.  
Usage: M1

---

**SG24      DOC**

---

Function: A group of segments specifying the certificates.  
Usage: D..2  
Notes:

---

**DOC      Document/message details**

---

Function: A segment specifying a requested certificate  
Usage: M1

---

**SG32      PRI-CUX**

---

Function: A group of segments to identify the unit price and the related date for the line item.  
Usage: O..2  
Notes:

---

**PRI      Price details**

---

Function: A segment specifying the line item price and the qualifying information.  
Usage: M1

---

**CUX      Currencies**

---

Function: A segment specifying the currency for all prices and/or amounts.  
Usage: D1

---

**UNT      Message trailer**

---

Function: A service segment ending, and providing information for checking the completeness of a message.  
Usage: M1



## SEGMENT DETAILS



### UNH Message header

Function: A service segment heading, and uniquely identifying the message.

Usage : M1

Notes : Refer to EDIFICE Utilisation of the UN/EDIFACT Service Segments, Issue EDSS10

Ref.	Rep.	Name		EDIFICE Utilisation
0062	an..14	M MESSAGE REFERENCE NUMBER	M	Transmission message count from 1
S009		M MESSAGE IDENTIFIER	M	
0065	an..6	M Message type	M	<b>DELFOR</b> = Delivery schedule message
0052	an..3	M Message version number	M	<b>D</b> = Draft version/UN/EDIFACT Directory
0054	an..3	M Message release number	M	<b>10A</b> = Release 2010 - A
0051	an..3	M Controlling agency, coded	M	<b>UN</b> = UN/CEFACT
0057	an..6	C Association assigned code	R	<b>EDDF10</b> = Delivery Schedule Message Issue EDDF10
0110	an..6	C Code list directory version number	N	
0113	an..6	C Message type sub-function identification	N	
0068	an..35	C COMMON ACCESS REFERENCE	N	
S010		C STATUS OF THE TRANSFER	N	
0070	n..2	M Sequence of transfers	N	
0073	a1	C First and last transfer	N	
S016		C MESSAGE SUBSET IDENTIFICATION	N	
0115	an..14	M Message subset identification	N	
0116	an..3	C Message subset version number	N	
0118	an..3	C Message subset release number	N	
0051	an..3	C Controlling agency, coded	N	
S017		C MESSAGE IMPLEMENTATION GUIDELINE IDENTIFICATION	N	
0121	an..14	M Message implementation guideline identification	N	
0122	an..3	C Message implementation guideline version number	N	
0124	an..3	C Message implementation guideline release number	N	
0051	an..3	C Controlling agency, coded	N	
S018		C SCENARIO IDENTIFICATION	N	
0127	an..14	M Scenario identification	N	
0128	an..3	C Scenario version number	N	
0130	an..3	C Scenario release number	N	
0051	an..3	C Controlling agency, coded	N	

## BGM Beginning of message

Function: A segment uniquely identifying the message by means of its coded name, number and function.

Usage : M1

Notes : When the content of DE 1001 is not '241' Delivery Schedule, this code defines a specific business scenario assigned by EDIFICE - in which case DE 3055 must be set to '8'.

Ref.	Rep.	Name		EDIFICE Utilisation	
C002		C DOCUMENT/MESSAGE NAME	R	<p><b>241</b> = Delivery schedule</p> <p>The following values for DE 1001 have currently been assigned by EDIFICE.</p> <p><b>A</b> = Planning forecast (*)</p> <p><b>B</b> = Planning forecast with traditional purchase order cycle (*)</p> <p><b>C</b> = Planning forecast and separate material release (*)</p> <p><b>D</b> = Planning forecast combined with embedded release (*)</p> <p><b>E</b> = Planning forecast with consignment stock (*)</p> <p><b>F</b> = Planning forecast with separate calloff, and consignment (*)</p> <p><b>G</b> = Forecast-based Supplier-Managed Inventory (*)</p> <p><b>H</b> = Forecast-based Supplier-Managed Inventory with consignment (*)</p> <p><b>I</b> = Consumption-based Supplier-Managed Inventory (*)</p> <p><b>J</b> = Distributor forecasting and supply (*)</p> <p><b>K</b> = Supplier-Managed Inventory in third party warehouse - buyer-owned inventory (*)</p> <p><b>L</b> = SMI in third party warehouse - seller-owned inventory (i.e. consignment) (*)</p> <p><b>M</b> = Contract manufacturing - Prime contractor procures components (*)</p> <p><b>N</b> = Contract manufacturing - Contract manufacturer procures components (*)</p> <p><b>O</b> = Consignment inventory in third party warehouse (*)</p> <p><b>P</b> = Response to forecast (*)</p> <p>(*) EDIFICE code</p>	
1001	an..3	C Document name code	R		
1131	an..17	C Code list identification code	N		
3055	an..3	C Code list responsible agency code	D		
1000	an..35	C Document name	N		
C106		C DOCUMENT/MESSAGE IDENTIFICATION	R		
1004	an..70	C Document identifier	R		
1056	an..9	C Version identifier	N		
1060	an..6	C Revision identifier	N		
1225	an..3	C MESSAGE FUNCTION CODE	A		
4343	an..3	C RESPONSE TYPE CODE	N		
					<b>8</b> = EDIFICE
					<b>9</b> = Original

**DTM Date/time/period**

Function: A segment specifying the date/time of creation of the message.

Usage : M1

Notes :

Ref.	Rep.	Name		EDIFICE Utilisation
C507		M DATE/TIME/PERIOD	M	
2005	an..3	M Date or time or period function code qualifier	M	<b>137</b> = Document issue date time
2380	an..35	C Date or time or period text	R	
2379	an..3	C Date or time or period format code	R	<b>102</b> = CCYYMMDD <b>102</b> = CCYYMMDD <b>203</b> = CCYYMMDDHHMM <b>205</b> = CCYYMMDDHHMMZHHMM <i>Replaces EDIFICE code</i> <i>X03=CCYYMMDDHHMMZZZZZ</i> <b>303</b> = CCYYMMDDHHMMZZZ <i>ZZZ = Time zone</i> <b>304</b> = CCYYMMDDHHMMSSZZZ <i>ZZZ = Time zone</i>

**SG1 RFF-DTM**

**RFF Reference**

Function: A segment specifying a document reference number and its appropriate line number.  
 Usage : M1  
 Notes :

Ref.	Rep.	Name		EDIFICE Utilisation
C506		M REFERENCE	M	<b>AAD</b> = Contract document addendum identifier <i>Number assigned by the issuer of a contract addendum.</i> <b>ALM</b> = Previous delivery schedule number <b>BO</b> = Blanket order number <b>CT</b> = Contract number <b>GC</b> = Government contract number <b>PR</b> = Price quote number
1153	an..3	M Reference code qualifier	M	
1154	an..70	C Reference identifier	R	
1156	an..6	C Document line identifier	O	
1056	an..9	C Version identifier	N	
1060	an..6	C Revision identifier	N	

**SG1 RFF-DTM****DTM Date/time/period**

Function: A segment specifying the date/time of the reference document.

Usage : D1

Notes :

Ref.	Rep.	Name		EDIFICE Utilisation
C507		M DATE/TIME/PERIOD	M	
2005	an..3	M Date or time or period function code qualifier	M	<b>171</b> = Reference date/time
2380	an..35	C Date or time or period text	R	
2379	an..3	C Date or time or period format code	R	<b>102</b> = CCYYMMDD <b>203</b> = CCYYMMDDHHMM <b>205</b> = CCYYMMDDHHMMZHHMM <i>Replaces EDIFICE code</i> <i>X03=CCYYMMDDHHMMZZZZ</i> <b>303</b> = CCYYMMDDHHMMZZZ <i>ZZZ = Time zone</i> <b>304</b> = CCYYMMDDHHMMSSZZZ <i>ZZZ = Time zone</i>

**SG2 NAD-SG3-SG4**
**NAD Name and address**

Function: A segment identifying the function and coded identification, name and address of a party involved.

Usage : M1

Notes : It is advised that the party identification CO C082 be used. When CO C082 cannot be used it is recommended to use the structured name and address CO C080 through DE 3207 rather than the unstructured one CO C058.

Ref.	Rep.	Name		EDIFICE Utilisation
3035	an..3	M PARTY FUNCTION CODE QUALIFIER	M	<b>BY</b> = Buyer <b>SE</b> = Seller
C082		C PARTY IDENTIFICATION DETAILS	A	
3039	an..35	M Party identifier	M	
1131	an..17	C Code list identification code	N	
3055	an..3	C Code list responsible agency code	R	<b>9</b> = GS1
				<b>16</b> = US, D&B (Dun & Bradstreet Corporation)
				<b>91</b> = Assigned by seller or seller's agent
				<b>92</b> = Assigned by buyer or buyer's agent
C058		C NAME AND ADDRESS	D	
3124	an..35	M Name and address description	M	
3124	an..35	C Name and address description	O	
3124	an..35	C Name and address description	O	
3124	an..35	C Name and address description	O	
3124	an..35	C Name and address description	O	
C080		C PARTY NAME	D	
3036	an..70	M Party name	M	
3036	an..70	C Party name	O	
3036	an..70	C Party name	O	
3036	an..70	C Party name	O	
3036	an..70	C Party name	O	
3045	an..3	C Party name format code	N	
C059		C STREET	D	
3042	an..35	M Street and number or post office box identifier	M	
3042	an..35	C Street and number or post office box identifier	O	
3042	an..35	C Street and number or post office box identifier	O	
3042	an..35	C Street and number or post office box identifier	O	
3164	an..35	C CITY NAME	D	
C819		C COUNTRY SUBDIVISION DETAILS	C	
3229	an..9	C Country subdivision identifier	D	
1131	an..17	C Code list identification code	N	
3055	an..3	C Code list responsible agency code	N	
3228	an..70	C Country subdivision name	N	
3251	an..17	C POSTAL IDENTIFICATION CODE	D	
3207	an..3	C COUNTRY IDENTIFIER	D	Use ISO 3166, 2 alpha code

**SG3 RFF**

**RFF Reference**

Function: A segment specifying a company specific reference.

Usage : M1

Notes :

Ref.	Rep.	Name		EDIFICE Utilisation
C506		M REFERENCE	M	<b>GC</b> = Government contract number <b>VA</b> = VAT registration number
1153	an..3	M Reference code qualifier	M	
1154	an..70	C Reference identifier	R	
1156	an..6	C Document line identifier	N	
1056	an..9	C Version identifier	N	
1060	an..6	C Revision identifier	N	

**SG4 CTA-COM**

**CTA Contact information**

Function: A segment identifying a person or department, and their function.

Usage : M1

Notes :

Ref.	Rep.	Name	EDIFICE Utilisation	
3139	an..3	C CONTACT FUNCTION CODE	R	<b>PD</b> = Purchasing contact <b>SC</b> = Schedule contact
C056		C CONTACT DETAILS	R	If a code is available use DE 3413, otherwise use DE 3412.
3413	an..17	C Contact identifier	D	
3412	an..256	C Contact name	D	



**SG4 CTA-COM****COM Communication contact**

Function: A segment identifying a communications type and number.

Usage : 0..3

Notes :

Ref.	Rep.	Name		EDIFICE Utilisation
C076		M COMMUNICATION CONTACT	M	
3148	an..512	M Communication address identifier	M	
3155	an..3	M Communication means type code	M	
				<b>EM</b> = Electronic mail <b>FX</b> = Telefax <b>TE</b> = Telephone

**SG6 GEI-SG7-SG12**

**GEI Processing information**

Function: A segment indicating that the delivery point scheduling method is used.

Usage : M1

Notes : This dummy segment defines the use of the 'Delivery point driven' method.

Ref.	Rep.	Name		EDIFICE Utilisation
9649	an..3	M PROCESSING INFORMATION CODE QUALIFIER	M	<b>3</b> = Scheduling type information <i>Identifies information about the scheduling type.</i>
C012		C PROCESSING INDICATOR	M	
7365	an..3	C Processing indicator description code	M	<b>94</b> = Delivery point driven scheduling method <i>Scheduling method used when for a given delivery point a number of different products are to be delivered.</i>
1131	an..17	C Code list identification code	N	
3055	an..3	C Code list responsible agency code	N	
7364	an..35	C Processing indicator description	N	
7187	an..17	C PROCESS TYPE DESCRIPTION CODE	N	

**SG7 NAD-LOC-SG11**
**NAD Name and address**

Function: A segment identifying the coded identification, name and address of the delivery point.

Usage : M1

Notes :

Ref.	Rep.	Name		EDIFICE Utilisation
3035	an..3	M PARTY FUNCTION CODE QUALIFIER	M	<b>DP</b> = Delivery party <i>Delivery point</i>
C082		C PARTY IDENTIFICATION DETAILS	A	
3039	an..35	M Party identifier	M	
1131	an..17	C Code list identification code	N	
3055	an..3	C Code list responsible agency code	R	<b>9</b> = GS1 <b>16</b> = US, D&B (Dun & Bradstreet Corporation) <b>91</b> = Assigned by seller or seller's agent <b>92</b> = Assigned by buyer or buyer's agent
C058		C NAME AND ADDRESS	D	
3124	an..35	M Name and address description	M	
3124	an..35	C Name and address description	O	
3124	an..35	C Name and address description	O	
3124	an..35	C Name and address description	O	
3124	an..35	C Name and address description	O	
C080		C PARTY NAME	D	
3036	an..70	M Party name	M	
3036	an..70	C Party name	O	
3036	an..70	C Party name	O	
3036	an..70	C Party name	O	
3036	an..70	C Party name	O	
3045	an..3	C Party name format code	N	
C059		C STREET	D	
3042	an..35	M Street and number or post office box identifier	M	
3042	an..35	C Street and number or post office box identifier	O	
3042	an..35	C Street and number or post office box identifier	O	
3042	an..35	C Street and number or post office box identifier	O	
3164	an..35	C CITY NAME	D	
C819		C COUNTRY SUBDIVISION DETAILS	C	
3229	an..9	C Country subdivision identifier	D	
1131	an..17	C Code list identification code	N	
3055	an..3	C Code list responsible agency code	N	
3228	an..70	C Country subdivision name	N	
3251	an..17	C POSTAL IDENTIFICATION CODE	D	
3207	an..3	C COUNTRY IDENTIFIER	D	Use ISO 3166, 2 alpha code

**SG7 NAD-LOC-SG11**

**LOC Place/location identification**

Function: A segment identifying a specific location or place at the delivery point.

Usage : 01

Notes :

Ref.	Rep.	Name		EDIFICE Utilisation
3227	an..3	M LOCATION FUNCTION CODE QUALIFIER	M	<b>88</b> = Place of receipt
C517		C LOCATION IDENTIFICATION	R	It is advised that DE 3225 be used together with DE 3055 rather than DE 3224.
3225	an..35	C Location identifier	A	
1131	an..17	C Code list identification code	N	
3055	an..3	C Code list responsible agency code	D	<b>92</b> = Assigned by buyer or buyer's agent
3224	an..256	C Location name	D	
C519		C RELATED LOCATION ONE IDENTIFICATION	N	
3223	an..35	C First related location identifier	N	
1131	an..17	C Code list identification code	N	
3055	an..3	C Code list responsible agency code	N	
3222	an..70	C First related location name	N	
C553		C RELATED LOCATION TWO IDENTIFICATION	N	
3233	an..35	C Second related location identifier	N	
1131	an..17	C Code list identification code	N	
3055	an..3	C Code list responsible agency code	N	
3232	an..70	C Second related location name	N	
5479	an..3	C RELATION CODE	N	

**SG11 TDT**
**TDT Transport information**

Function: A segment specifying for the main-carriage stage the mode of transport and the carrier information.

Usage : M1

Notes :

Ref.	Rep.	Name		EDIFICE Utilisation	
8051	an..3	M TRANSPORT STAGE CODE QUALIFIER	M	<b>20</b> = Main-carriage transport	
8028	an..17	C MEANS OF TRANSPORT JOURNEY IDENTIFIER	N		
C220		C MODE OF TRANSPORT	R		
8067	an..3	C Transport mode name code	R		
					<b>6</b> = Multimodal transport
					<b>1</b> = Maritime transport
					<b>2</b> = Rail transport
					<b>3</b> = Road transport
					<b>4</b> = Air transport
					<b>5</b> = Mail
				<b>6</b> = Multimodal transport	
8066	an..17	C Transport mode name	N		
C001		C TRANSPORT MEANS	N		
8179	an..8	C Transport means description code	N		
1131	an..17	C Code list identification code	N		
3055	an..3	C Code list responsible agency code	N		
8178	an..17	C Transport means description	N		
C040		C CARRIER	O		
3127	an..17	C Carrier identifier	A	Mutually defined code	
1131	an..17	C Code list identification code	N		
3055	an..3	C Code list responsible agency code	A	<b>3</b> = IATA (International Air Transport Association)	
				<b>9</b> = GS1	
				<b>11</b> = Lloyd's register of shipping	
				<b>16</b> = US, D&B (Dun & Bradstreet Corporation)	
				<b>91</b> = Assigned by seller or seller's agent	
				<b>92</b> = Assigned by buyer or buyer's agent	
				<b>166</b> = US, National Motor Freight Classification Association	
3126	an..35	C Carrier name	D	Used if no coded name is exchanged in DE 3127	
8101	an..3	C TRANSIT DIRECTION INDICATOR CODE	N		
C401		C EXCESS TRANSPORTATION INFORMATION	N		
8457	an..3	M Excess transportation reason code	N		
8459	an..3	M Excess transportation responsibility code	N		
7130	an..17	C Customer shipment authorisation identifier	N		
C222		C TRANSPORT IDENTIFICATION	N		
8213	an..35	C Transport means identification name identifier	N		
1131	an..17	C Code list identification code	N		
3055	an..3	C Code list responsible agency code	N		
8212	an..70	C Transport means identification name	N		
8453	an..3	C Transport means nationality code	N		
8281	an..3	C TRANSPORT MEANS OWNERSHIP INDICATOR CODE	N		

**SG12 LIN-PIA-IMD-GIN-SG13-SG16-SG18-SG21-SG23-SG32**

**LIN Line item**

Function: A segment identifying a line item by its item number, and agreed to be the primary reference number between the buyer and seller.

The segment also carries a sequence number assigned to the line item within the message.

Usage : M1

Notes : For a line item referring to a service which has no coded identification, the primary identification is found in segment IMD, rather than in CO C212.

Ref.	Rep.	Name		EDIFICE Utilisation
1082	an..6	C LINE ITEM IDENTIFIER	R	It is required to assign a number to the line items within a message. The number is assigned by the sender of the message. The first line item within a message will be numbered 1 and further line items will be incremented by 1 for each new line.  Primary reference <b>BP</b> = Buyer's part number <b>EN</b> = International Article Numbering Association (EAN) <b>SRV</b> = EAN.UCC Global Trade Item Number <b>MF</b> = Manufacturer's (producer's) article number <b>SSS</b> = Distributor's article identifier <i>Replaces EDIFACT code DI=Distributor's part number</i> <b>UP</b> = UPC (Universal product code) <b>VP</b> = Vendor's (seller's) part number  <b>9</b> = GS1 <b>89</b> = Assigned by distributor <b>90</b> = Assigned by manufacturer <b>91</b> = Assigned by seller or seller's agent <b>92</b> = Assigned by buyer or buyer's agent <b>113</b> = GS1 US
1229	an..3	C ACTION CODE	N	
C212		C ITEM NUMBER IDENTIFICATION	A	
7140	an..35	C Item identifier	R	
7143	an..3	C Item type identification code	R	
1131	an..17	C Code list identification code	N	
3055	an..3	C Code list responsible agency code	R	
C829		C SUB-LINE INFORMATION	N	
5495	an..3	C Sub-line indicator code	N	
1082	an..6	C Line item identifier	N	
1222	n..2	C CONFIGURATION LEVEL NUMBER	N	
7083	an..3	C CONFIGURATION OPERATION CODE	N	

**SG12 LIN-PIA-IMD-GIN-SG13-SG16-SG18-SG21-SG23-SG32****PIA Additional product id**

Function: A segment providing additional identification numbers for the line item.

Usage : D 1

Notes : The 5 internal repetitions of CO C212 may be used, but EDIFICE recommends to only use the first occurrence.

Ref.	Rep.	Name		EDIFICE Utilisation
4347	an..3	M PRODUCT IDENTIFIER CODE QUALIFIER	M	<b>1</b> = Additional identification
C212		M ITEM NUMBER IDENTIFICATION	M	
7140	an..35	C Item identifier	R	
7143	an..3	C Item type identification code	R	<b>AA</b> = Product version number <i>Release number of a product</i>
				<b>BP</b> = Buyer's part number
				<b>CL</b> = Colour number
				<b>CV</b> = Customs article number
				<b>DR</b> = Drawing revision number
				<b>DW</b> = Drawing
				<b>EC</b> = Engineering change level
				<b>EN</b> = International Article Numbering Association (EAN)
				<b>GS</b> = General specification number
				<b>MF</b> = Manufacturer's (producer's) article number
				<b>MN</b> = Model number
				<b>SG</b> = Standard group of products (mixed assortment)
				<b>SN</b> = Serial number
				<b>SRV</b> = EAN.UCC Global Trade Item Number
				<b>UP</b> = UPC (Universal product code)
				<b>SSS</b> = Distributor's article identifier <i>Replaces EDIFACT code DI=Distributor's part number</i>
				<b>VP</b> = Vendor's (seller's) part number
				<b>VX</b> = Vendor specification number
1131	an..17	C Code list identification code	N	
3055	an..3	C Code list responsible agency code	R	<b>9</b> = GS1
				<b>89</b> = Assigned by distributor
				<b>90</b> = Assigned by manufacturer
				<b>91</b> = Assigned by seller or seller's agent
				<b>92</b> = Assigned by buyer or buyer's agent
				<b>113</b> = GS1 US
C212		C ITEM NUMBER IDENTIFICATION	O	As for first CO C212
7140	an..35	C Item identifier	R	
7143	an..3	C Item type identification code	R	
1131	an..17	C Code list identification code	N	
3055	an..3	C Code list responsible agency code	R	
C212		C ITEM NUMBER IDENTIFICATION	O	As for first CO C212
7140	an..35	C Item identifier	R	
7143	an..3	C Item type identification code	R	
1131	an..17	C Code list identification code	N	
3055	an..3	C Code list responsible agency code	R	
C212		C ITEM NUMBER IDENTIFICATION	O	As for first CO C212
7140	an..35	C Item identifier	R	
7143	an..3	C Item type identification code	R	
1131	an..17	C Code list identification code	N	
3055	an..3	C Code list responsible agency code	R	
C212		C ITEM NUMBER IDENTIFICATION	O	As for first CO C212
7140	an..35	C Item identifier	R	
7143	an..3	C Item type identification code	R	
1131	an..17	C Code list identification code	N	
3055	an..3	C Code list responsible agency code	R	

**SG12 LIN-PIA-IMD-GIN-SG13-SG16-SG18-SG21-SG23-SG32**

**IMD Item description**

Function: A segment specifying ship to stock or ship to line quality and/or an additional description in clear or coded form, for the line item.

Usage : D 1

Notes :

Ref.	Rep.	Name		EDIFICE Utilisation
7077	an..3	C DESCRIPTION FORMAT CODE	D	<b>C</b> = Code (from industry code list) <b>F</b> = Free-form  <b>3</b> = Ship to stock <b>26</b> = Ship to line  Use DE 7009 for a coded description. If no code is available use DE 7008 instead.
C272		C ITEM CHARACTERISTIC	O	
7081	an..3	C Item characteristic code	R	
1131	an..17	C Code list identification code	N	
3055	an..3	C Code list responsible agency code	N	
C273		C ITEM DESCRIPTION	D	
7009	an..17	C Item description code	A	
1131	an..17	C Code list identification code	N	
3055	an..3	C Code list responsible agency code	N	
7008	an..256	C Item description	D	
7008	an..256	C Item description	O	
3453	an..3	C Language name code	N	
7383	an..3	C SURFACE OR LAYER CODE	N	



**SG12 LIN-PIA-IMD-GIN-SG13-SG16-SG18-SG21-SG23-SG32****GIN Goods identity number**

Function: A segment providing identity numbers to be applied to the line item.

Usage : D..100

Notes :

Ref.	Rep.	Name	EDIFICE Utilisation	
7405	an..3	M OBJECT IDENTIFICATION CODE QUALIFIER	M	<b>BN</b> = Serial number
C208		M IDENTITY NUMBER RANGE	M	The first DE 7402 in the composite data element is the start of the consecutively numbered range, the second DE 7402 indicates the end of the range. If there is no range only the first DE 7402 is used. If the identity numbers are not sequential and part of a series (e.g. 1,3,10) then a separate CO C208 and DE 7402 must be used for each identity number.
7402	an..35	M Object identifier	M	
7402	an..35	C Object identifier	D	
C208		C IDENTITY NUMBER RANGE	O	As for first CO C208
7402	an..35	M Object identifier	M	
7402	an..35	C Object identifier	D	
C208		C IDENTITY NUMBER RANGE	O	As for first CO C208
7402	an..35	M Object identifier	M	
7402	an..35	C Object identifier	D	
C208		C IDENTITY NUMBER RANGE	O	As for first CO C208
7402	an..35	M Object identifier	M	
7402	an..35	C Object identifier	D	
C208		C IDENTITY NUMBER RANGE	O	As for first CO C208
7402	an..35	M Object identifier	M	
7402	an..35	C Object identifier	D	

**SG13 RFF-DTM**

**RFF Reference**

Function: A segment specifying a document reference number and its appropriate line number.

Usage : M1

Notes :

Ref.	Rep.	Name		EDIFICE Utilisation
C506		M REFERENCE	M	<b>AAD</b> = Contract document addendum identifier <i>Number assigned by the issuer of a contract addendum</i>  <b>ALM</b> = Previous delivery schedule number <b>BO</b> = Blanket order number <b>CT</b> = Contract number <b>GC</b> = Government contract number <b>PR</b> = Price quote number
1153	an..3	M Reference code qualifier	M	
1154	an..70	C Reference identifier	R	
1156	an..6	C Document line identifier	O	
1056	an..9	C Version identifier	N	
1060	an..6	C Revision identifier	N	

**SG13 RFF-DTM****DTM Date/time/period**

Function: A segment specifying the date/time of the reference document.

Usage : D 1

Notes :

Ref.	Rep.	Name		EDIFICE Utilisation
C507		M DATE/TIME/PERIOD	M	
2005	an..3	M Date or time or period function code qualifier	M	<b>171</b> = Reference date/time
2380	an..35	C Date or time or period text	R	
2379	an..3	C Date or time or period format code	R	<b>102</b> = CCYMMDD <b>203</b> = CCYMMDDHHMM <b>205</b> = CCYMMDDHHMMZHHMM <i>Replaces EDIFICE code</i> <i>X03=CCYMMDDHHMMZZZZ</i> <b>303</b> = CCYMMDDHHMMZZZ <i>ZZZ = Time zone</i> <b>304</b> = CCYMMDDHHMMSSZZZ <i>ZZZ = Time zone</i>

**SG16 QTY-DTM-SG17**

**QTY Quantity**

Function: A segment specifying a quantity.  
 Usage : M1  
 Notes :

Ref.	Rep.	Name		EDIFICE Utilisation
C186		M QUANTITY DETAILS	M	
6063	an..3	M Quantity type code qualifier	M	<b>3</b> = Cumulative quantity <i>This is the sum of the quantities for this line item in the QTY segment in SG19.</i> <b>48</b> = Received quantity <b>58</b> = Quantity withdrawn <i>Quantity consumed from inventory.</i> <b>66</b> = Committed quantity <i>Liability quantity as defined in a contractual agreement.</i> <b>70</b> = Cumulative quantity received <b>83</b> = Backorder quantity <i>Quantity previously requested for delivery before current date and not yet fulfilled.</i> <b>97</b> = Minimum inventory <b>98</b> = Maximum inventory <b>145</b> = Actual stock <i>Inventory quantity - Customer owned</i> <b>152</b> = Consignment stock <i>Supplier owned</i>
6060	an..35	M Quantity	M	
6411	an..8	C Measurement unit code	R	<b>CLT</b> = centilitre <b>CMT</b> = centimetre <b>EA</b> = each <b>GRM</b> = gram <b>H87</b> = piece <b>KGM</b> = kilogram <b>KMT</b> = kilometre <b>KTM</b> = <b>LTR</b> = litre <b>MGM</b> = milligram <b>MMT</b> = millimetre <b>MTK</b> = square metre <b>MTQ</b> = cubic metre <b>MTR</b> = metre <b>PCE</b> = piece (*) EDIFICE Code 'PCE' is widely adopted by membership and preferred over the EDIFACT code 'H87' (*) EDIFICE code Other codes should be previously agreed between trading partners.

**SG16 QTY-DTM-SG17****DTM Date/time/period**

Function: A segment specifying a date/time related to the quantity.

Usage : D..2

Notes :

Ref.	Rep.	Name		EDIFICE Utilisation
C507		M DATE/TIME/PERIOD	M	
2005	an..3	M Date or time or period function code qualifier	M	<b>50</b> = Goods receipt date/time <b>158</b> = Horizon start date <b>159</b> = Horizon end date <b>366</b> = Inventory report date <b>612</b> = Asset and liability schedule date <i>Date when the customer begins its liability commitment to the supplier for the referenced part number in the forecast.  Replaces EDIFICE code LSD=Liability start date</i>
2380	an..35	C Date or time or period text	R	
2379	an..3	C Date or time or period format code	R	<b>102</b> = CCYMMDD <b>203</b> = CCYMMDDHHMM <b>205</b> = CCYMMDDHHMMZHHMM <i>Replaces EDIFICE code  X03=CCYMMDDHHMMZZZZ</i> <b>303</b> = CCYMMDDHHMMZZZ <i>ZZZ = Time zone</i> <b>304</b> = CCYMMDDHHMMSSZZZ <i>ZZZ = Time zone</i>

**SG17 RFF-DTM**

**RFF Reference**

Function: A segment specifying a document reference number and its appropriate line number, identifying the quantity received or consumed from inventory.

Usage : M1

Notes :

Ref.	Rep.	Name		EDIFICE Utilisation
C506		M REFERENCE	M	<b>AAK</b> = Despatch advice number <b>IV</b> = Invoice document identifier <b>PK</b> = Packing list number <b>SRN</b> = Shipment reference number <b>TN</b> = Transaction reference number
1153	an..3	M Reference code qualifier	M	
1154	an..70	C Reference identifier	R	
1156	an..6	C Document line identifier	O	
1056	an..9	C Version identifier	N	
1060	an..6	C Revision identifier	N	

**SG17 RFF-DTM****DTM Date/time/period**

Function: A segment specifying the date/time of the reference document.

Usage : 01

Notes :

Ref.	Rep.	Name		EDIFICE Utilisation
C507		M DATE/TIME/PERIOD	M	
2005	an..3	M Date or time or period function code qualifier	M	<b>171</b> = Reference date/time
2380	an..35	C Date or time or period text	R	
2379	an..3	C Date or time or period format code	R	<b>102</b> = CCYMMDD <b>203</b> = CCYMMDDHHMM <b>205</b> = CCYMMDDHHMMZHMM <i>Replaces EDIFICE code</i> <i>X03=CCYMMDDHHMMZZZZ</i> <b>303</b> = CCYMMDDHHMMZZZ <i>ZZZ = Time zone</i> <b>304</b> = CCYMMDDHHMMSSZZZ <i>ZZZ = Time zone</i>

**SG18 SCC-SG19**

**SCC Scheduling conditions**

Function: A segment specifying information on the liability commitment of the buyer to this schedule.

Usage : M1

Notes :

Ref.	Rep.	Name		EDIFICE Utilisation
4017	an..3	M DELIVERY PLAN COMMITMENT LEVEL CODE	M	<b>1 = Firm</b> <b>2 = Commitment for manufacturing and material</b> <b>3 = Commitment for material</b> <b>4 = Planning/forecast</b>
4493	an..3	C DELIVERY INSTRUCTION CODE	N	
C329		C PATTERN DESCRIPTION	N	
2013	an..3	C Frequency code	N	
2015	an..3	C Despatch pattern code	N	
2017	an..3	C Despatch pattern timing code	N	



**SG19 QTY-DTM-SG20**

**QTY Quantity**

Function: A segment specifying a quantity.

Usage : M1

Notes : EDIFICE recommends that DE 6063 should identify all quantities required on the specified date, by using code '131'. If trading partners require it, by agreement, DE 6063 could be used to identify details of how the scheduled quantities may be changing using the codes '18', '21', '85' and '94'.

Ref.	Rep.	Name	EDIFICE Utilisation	
C186		M QUANTITY DETAILS	M	
6063	an..3	M Quantity type code qualifier	M	<b>18</b> = Previous quantity <i>No change</i> <b>21</b> = Ordered quantity <i>New quantity</i> <b>85</b> = Previous order quantity to be cancelled <i>Cancellation</i> <b>94</b> = Substitutional quantity <i>Change to an existing quantity</i> <b>131</b> = Delivery quantity 0 if DE 6063 = 85
6060	an..35	M Quantity	M	
6411	an..8	C Measurement unit code	R	<b>CLT</b> = centilitre <b>CMT</b> = centimetre <b>EA</b> = each <b>GRM</b> = gram <b>H87</b> = piece <b>KGM</b> = kilogram <b>KMT</b> = kilometre <b>LTR</b> = litre <b>MGM</b> = milligram <b>MMT</b> = millimetre <b>MTK</b> = square metre <b>MTQ</b> = cubic metre <b>MTR</b> = metre <b>PCE</b> = piece (*) EDIFICE Code 'PCE' is widely adopted by membership and preferred over the EDIFACT code 'H87' (*) EDIFICE code Other codes should be previously agreed between trading partners.

**SG19 QTY-DTM-SG20****DTM Date/time/period**

Function: A segment specifying the corresponding time-frame i.e. horizon start and end date/time or discrete date/time of the quantity.

Usage : R..2

Notes :

Ref.	Rep.	Name		EDIFICE Utilisation
C507		M DATE/TIME/PERIOD	M	
2005	an..3	M Date or time or period function code qualifier	M	<b>2</b> = Delivery date/time, requested <i>Date on which buyer requests goods to be delivered</i> <b>10</b> = Shipment date/time, requested <i>Date on which goods should be shipped or despatched by the supplier</i> <b>158</b> = Horizon start date <b>159</b> = Horizon end date
2380	an..35	C Date or time or period text	R	
2379	an..3	C Date or time or period format code	R	<b>102</b> = CCYMMDD <b>203</b> = CCYMMDDHHMM <b>205</b> = CCYMMDDHHMMZHHMM <i>Replaces EDIFICE code</i> <i>X03=CCYMMDDHHMMZZZZ</i> <b>303</b> = CCYMMDDHHMMZZZ <i>ZZZ = Time zone</i> <b>304</b> = CCYMMDDHHMMSSZZZ <i>ZZZ = Time zone</i>

**SG20 RFF-DTM**

**RFF Reference**

Function: A segment specifying a document reference number and its appropriate line number.  
 Usage : M1  
 Notes :

Ref.	Rep.	Name		EDIFICE Utilisation
C506		M REFERENCE	M	<b>AAN</b> = Delivery schedule number <i>Reference number assigned by the buyer to a specific firm delivery schedule</i> <i>Replaces EDIFICE code FDS=Firm delivery schedule reference number</i> <b>ON</b> = Order document identifier, buyer assigned
1153	an..3	M Reference code qualifier	M	
1154	an..70	C Reference identifier	R	
1156	an..6	C Document line identifier	O	
1056	an..9	C Version identifier	N	
1060	an..6	C Revision identifier	N	

**SG20 RFF-DTM****DTM Date/time/period**

Function: A segment specifying the date/time of the reference document.

Usage : 01

Notes :

Ref.	Rep.	Name		EDIFICE Utilisation
C507		M DATE/TIME/PERIOD	M	
2005	an..3	M Date or time or period function code qualifier	M	<b>171</b> = Reference date/time
2380	an..35	C Date or time or period text	R	
2379	an..3	C Date or time or period format code	R	<b>102</b> = CCYYMMDD <b>203</b> = CCYYMMDDHHMM <b>205</b> = CCYYMMDDHHMMZHHMM <i>Replaces EDIFICE code</i> <i>X03=CCYYMMDDHHMMZZZZZ</i> <b>303</b> = CCYYMMDDHHMMZZZ <i>ZZZ = Time zone</i> <b>304</b> = CCYYMMDDHHMMSSZZZ <i>ZZZ = Time zone</i>

**SG21 PAC-QTY**
**PAC Package**

Function: A segment specifying the product package type.

Usage : M1

Notes :

Ref.	Rep.	Name		EDIFICE Utilisation
7224	n..8	C PACKAGE QUANTITY	N	
C531		C PACKAGING DETAILS	N	
7075	an..3	C Packaging level code	N	
7233	an..3	C Packaging related description code	N	
7073	an..3	C Packaging terms and conditions code	N	
C202		C PACKAGE TYPE	R	
7065	an..17	C Package type description code	R	<b>BA</b> = Barrel <b>BB</b> = Bobbin <b>BE</b> = Bundle <b>BG</b> = Bag <b>BQ</b> = Bottle, protected cylindrical <b>BV</b> = Bottle, protected bulbous <b>BX</b> = Box <b>CG</b> = Cage <b>CN</b> = Container, not otherwise specified as transport equipment <b>CR</b> = Crate <b>CS</b> = Case <b>CT</b> = Carton <b>CX</b> = Can, cylindrical <b>DR</b> = Drum <b>EN</b> = Envelope <b>NE</b> = Unpacked or unpackaged <b>PC</b> = Parcel <b>PK</b> = Package <b>PU</b> = Tray pack <i>Replaces formerly defined Code TRY90</i> <b>PX</b> = Pallet <b>RL</b> = Reel <i>Replaces formerly defined Code REL90</i> <b>RO</b> = Roll <b>SW</b> = Shrinkwrapped <b>TN</b> = Tin <b>TU</b> = Tube
1131	an..17	C Code list identification code	N	
3055	an..3	C Code list responsible agency code	D	Only used if non-EDIFACT codes are defined in 7065
7064	an..35	C Type of packages	N	
C402		C PACKAGE TYPE IDENTIFICATION	N	
7077	an..3	M Description format code	N	
7064	an..35	M Type of packages	N	
7143	an..3	C Item type identification code	N	
7064	an..35	C Type of packages	N	
7143	an..3	C Item type identification code	N	
C532		C RETURNABLE PACKAGE DETAILS	N	
8395	an..3	C Returnable package freight payment responsibility code	N	
8393	an..3	C Returnable package load contents code	N	

**SG21 PAC-QTY**

**QTY Quantity**

Function: A segment specifying the number of products contained in the package type.

Usage : 01

Notes :

Ref.	Rep.	Name		EDIFICE Utilisation
C186		M QUANTITY DETAILS	M	
6063	an..3	M Quantity type code qualifier	M	<b>52</b> = Quantity per pack
6060	an..35	M Quantity	M	
6411	an..8	C Measurement unit code	N	

**SG23 NAD-SG24**
**NAD Name and address**

Function: A segment identifying the buyer as the party requesting the certificates, or identifying the manufacturer's code, for the line item.

Usage : M1

Notes : CO C082 is only used if DE 3035 = 'MF'.

Ref.	Rep.	Name		EDIFICE Utilisation
3035	an..3	M PARTY FUNCTION CODE QUALIFIER	M	<b>BY</b> = Buyer <b>MF</b> = Manufacturer of goods
C082		C PARTY IDENTIFICATION DETAILS	D	
3039	an..35	M Party identifier	M	Manufacturer's code
1131	an..17	C Code list identification code	D	
3055	an..3	C Code list responsible agency code	R	To be agreed between trading partners
C058		C NAME AND ADDRESS	N	
3124	an..35	M Name and address description	N	
3124	an..35	C Name and address description	N	
3124	an..35	C Name and address description	N	
3124	an..35	C Name and address description	N	
3124	an..35	C Name and address description	N	
C080		C PARTY NAME	N	
3036	an..70	M Party name	N	
3036	an..70	C Party name	N	
3036	an..70	C Party name	N	
3036	an..70	C Party name	N	
3036	an..70	C Party name	N	
3045	an..3	C Party name format code	N	
C059		C STREET	N	
3042	an..35	M Street and number or post office box identifier	N	
3042	an..35	C Street and number or post office box identifier	N	
3042	an..35	C Street and number or post office box identifier	N	
3042	an..35	C Street and number or post office box identifier	N	
3164	an..35	C CITY NAME	N	
C819		C COUNTRY SUBDIVISION DETAILS	N	
3229	an..9	C Country subdivision identifier	N	
1131	an..17	C Code list identification code	N	
3055	an..3	C Code list responsible agency code	N	
3228	an..70	C Country subdivision name	N	
3251	an..17	C POSTAL IDENTIFICATION CODE	N	
3207	an..3	C COUNTRY IDENTIFIER	N	

**SG24 DOC**
**DOC Document/message details**

Function: A segment specifying a requested certificate

Usage : M1

Notes :

Ref.	Rep.	Name		EDIFICE Utilisation
C002		M DOCUMENT/MESSAGE NAME	M	<b>2</b> = Certificate of conformity <b>861</b> = Certificate of origin
1001	an..3	C Document name code	R	
1131	an..17	C Code list identification code	N	
3055	an..3	C Code list responsible agency code	N	
1000	an..35	C Document name	N	
C503		C DOCUMENT/MESSAGE DETAILS	N	
1004	an..70	C Document identifier	N	
1373	an..3	C Document status code	N	
1366	an..70	C Document source description	N	
3453	an..3	C Language name code	N	
1056	an..9	C Version identifier	N	
1060	an..6	C Revision identifier	N	
3153	an..3	C COMMUNICATION MEDIUM TYPE CODE	N	
1220	n..2	C DOCUMENT COPIES REQUIRED QUANTITY	N	
1218	n..2	C DOCUMENT ORIGINALS REQUIRED QUANTITY	N	



**SG32 PRI-CUX**

**PRI Price details**

Function: A segment specifying the line item price and the qualifying information.

Usage : M1

Notes :

Ref.	Rep.	Name		EDIFICE Utilisation
C509		C PRICE INFORMATION	C	<b>AAA</b> = Calculation net <b>AAB</b> = Calculation gross  <b>CA</b> = Catalogue <b>CT</b> = Contract <b>DI</b> = Distributor <b>NC</b> = No charge (*) The price will be zero <b>QT</b> = Quoted (*) EDIFICE code  <b>CLT</b> = centilitre <b>CMT</b> = centimetre <b>EA</b> = each <b>GRM</b> = gram <b>H87</b> = piece <b>KGM</b> = kilogram <b>KMT</b> = kilometre <b>LTR</b> = litre <b>MGM</b> = milligram <b>MMT</b> = millimetre <b>MTK</b> = square metre <b>MTQ</b> = cubic metre <b>MTR</b> = metre <b>PCE</b> = piece (*) EDIFICE Code 'PCE' is widely adopted by membership and preferred over the EDIFACT code 'H87' (*) EDIFICE code Other codes should be previously agreed between trading partners.
5125	an..3	M Price code qualifier	M	
5118	n..15	C Price amount	R	
5375	an..3	C Price type code	R	
5387	an..3	C Price specification code	N	
5284	n..9	C Unit price basis quantity	R	
6411	an..8	C Measurement unit code	R	
5213	an..3	C SUB-LINE ITEM PRICE CHANGE OPERATION CODE	N	

**SG32 PRI-CUX**

**CUX Currencies**

Function: A segment specifying the currency for all prices and/or amounts.

Usage : D1

Notes : If PRI is used then CUX must be used

Ref.	Rep.	Name		EDIFICE Utilisation
C504		C CURRENCY DETAILS	R	
6347	an..3	M Currency usage code qualifier	M	<b>2</b> = Reference currency
6345	an..3	C Currency identification code	R	Use ISO 4217, 3 alpha code
6343	an..3	C Currency type code qualifier	R	<b>1</b> = Customs valuation currency
				<b>3</b> = Home currency
				<b>4</b> = Invoicing currency
				<b>9</b> = Order currency
				<b>10</b> = Pricing currency
6348	n..4	C Currency rate	N	
C504		C CURRENCY DETAILS	N	
6347	an..3	M Currency usage code qualifier	N	
6345	an..3	C Currency identification code	N	
6343	an..3	C Currency type code qualifier	N	
6348	n..4	C Currency rate	N	
5402	n..12	C CURRENCY EXCHANGE RATE	N	
6341	an..3	C EXCHANGE RATE CURRENCY MARKET IDENTIFIER	N	

**UNT Message trailer**

Function: A service segment ending, and providing information for checking the completeness of a message.

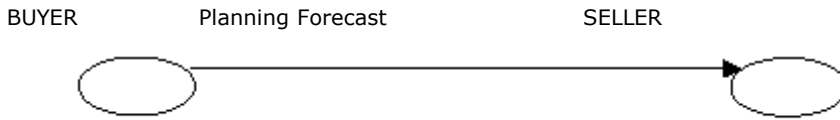
Usage : M1

Notes : Refer to EDIFICE Utilisation of the UN/EDIFACT Service Segments, Issue EDSS10

Ref.	Rep.	Name	EDIFICE Utilisation	
0074	n..10	M NUMBER OF SEGMENTS IN A MESSAGE	M	Count of all segments in the message, UNH and UNT included.
0062	an..14	M MESSAGE REFERENCE NUMBER	M	Must be the same reference number as in DE 0062 of the UNH segment of this message.

## **EXAMPLES**

### EXAMPLE 1 – Planning Forecast



Forecasts are supplied from the buyer to the seller for planning purposes only.

Typically the forecast horizon will be over a longer term, whilst shipments from the seller to the buyer are scheduled over a shorter horizon. Actual deliveries are released based on a separate call off by the buyer.

UNB+UNOW:4+123456789:1:X+987654321:1:X+021209:1909+88+X:AA+DELFOR++1+X+1'

UNH+1+DELFOR:D:10A:UN:EDDF10'

BGM+A::8+5678+9'

DTM+137:20100217:102'

RFF+ALM:5677'

RFF+CT:999456'

NAD+BY+MAGIMAX LTD::92'

NAD+SE+ABC SUPPLIES::91'

CTA+PD+:PETER SMITH'

COM+0756-551459:TE'

GEI+3+94'

NAD+DP+MAGIMAX STORES LTD::92'

LIN+1++ABC00071:BP::92'

PIA+1+ACT2T:VP::91'

QTY+3:1000:PCE'

SCC+4'

QTY+131:500:PCE'

DTM+158:20100316:102'

DTM+159:20100322:102'

SCC+4'

QTY+131:500:PCE'

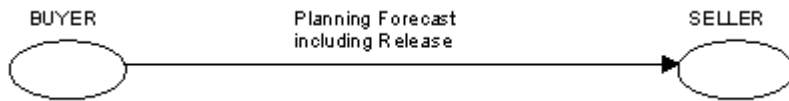
DTM+158:20100323:102'

DTM+159:20100329:102'

UNT+23+1'

UNZ+1+88'

EXAMPLE 2 – Planning Forecast with Embedded Release



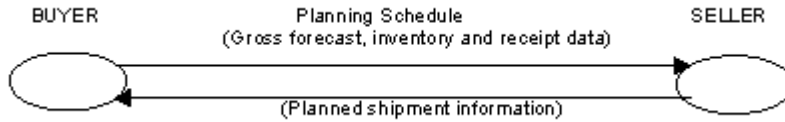
The buyer supplies a regular net planning forecast, against which the seller manufactures goods ready for shipment. Actual deliveries are released based on firm colloff requirements included alongside the delivery forecast information.

In this scenario, typically, the forecast may be weekly, and the requirement includes the firm short-term deliveries which may be for one or more times in the week.

EDIFICE recommends that the horizon of firm requirements embedded in the message is kept short, otherwise a more conventional ordering model should be used.

```
UNB+UNOW:4+123456789:1:X+987654321:1:X+021209:1909+88+X:AA+DELFOR++1+X+1'  
UNH+1+DELFOR:D:10A:UN:EDDF10'  
BGM+D::8+5678+9'  
DTM+137:20100217:102'  
  
RFF+ALM:5677'  
  
RFF+CT:999456'  
  
NAD+BY+MAGIMAX LTD::92'  
  
NAD+SE+ABC SUPPLIES::91'  
  
CTA+PD+:PETER SMITH'  
COM+0756-551459:TE'  
  
GEI+3+94'  
  
NAD+DP+MAGIMAX STORES LTD::92'  
  
LIN+1++ABC00071:BP::92'  
PIA+1+ACT2T:VP::91'  
  
QTY+3:1500:PCE'  
  
SCC+1'  
  
QTY+131:500:PCE'  
DTM+2:20100225:102'  
  
RFF+ON:6785432:1'  
  
SCC+4'  
  
QTY+131:500:PCE'  
DTM+158:20100316:102'  
DTM+159:20100322:102'  
  
SCC+4'  
  
QTY+131:500:PCE'  
DTM+158:20100323:102'  
DTM+159:20100329:102'  
UNT+27+1'  
UNZ+1+88'
```

EXAMPLE 3 – Supplier Managed Inventory (SMI)



This is the standard Supplier Managed Inventory scenario.

The buyer supplies regular gross forecasts, updated inventory target information, actual on-hand inventory and details of last receipts. The seller then calculates required shipments to meet the production and inventory needs, and schedules shipments accordingly.

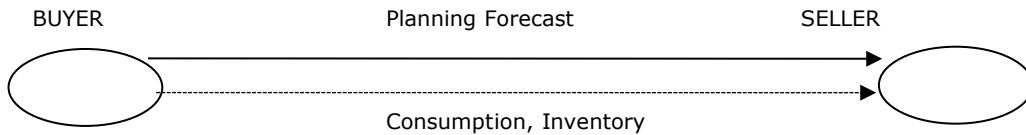
The seller may provide information on planned shipments for the buyer to monitor and to plan goods inwards facilities.

One single message, DELFOR, from buyer to seller, is recommended for synchronisation of data and ease of processing.

\* Inventory targets e.g. maximum/minimum levels, could be agreed and defined externally, in the supplier's processing application, rather than in every message.

```
UNB+UNOW:4+123456789:1:X+987654321:1:X+021209:1909+88+X:AA+DELFOR++1+X+1'  
UNH+1+DELFOR:D:10A:UN:EDDF10'  
BGM+G::8+5678+9'  
DTM+137:20100217:102'  
  
RFF+ALM:5677'  
  
RFF+CT:999456'  
  
NAD+BY+MAGIMAX LTD::92'  
  
NAD+SE+ABC SUPPLIES::91'  
  
CTA+PD+:PETER SMITH'  
COM+0756-551459:TE'  
  
GEI+3+94'  
  
NAD+DP+MAGIMAX STORES LTD::92'  
  
LIN+1++ABC00071:BP::92'  
PIA+1+ACT2T:VP::91'  
  
RFF+BO:6785432:1'  
  
QTY+145:10123:PCE'  
DTM+366:20100217:102'  
  
QTY+97:7500:PCE'  
QTY+98:15000:PCE'  
QTY+48:1000:PCE'  
DTM+50:20100218:102'  
  
RFF+AAK:DA1234'  
  
QTY+3:1000:PCE'  
  
SCC+4'  
  
QTY+131:500:PCE'  
DTM+158:20100316:102'  
DTM+159:20100322:102'  
  
SCC+4'  
  
QTY+131:500:PCE'  
DTM+158:20100323:102'  
DTM+159:20100329:102'  
UNT+31+1'  
UNZ+1+88'
```

EXAMPLE 4 – Planning Forecast with Consignment Stock



The buyer provides regular forecasts of gross requirements, to ship into stock on the buyer's premises. The buyer manages the inventory levels/replenishment within parameters agreed with the seller: the inventory is still the property of the seller. Actual shipments may be made on the basis of firm order requirements embedded within the forecast message.

Consumption is reported by the buyer as a basis for the seller to keep track of the inventory and to raise invoices or check self-billing invoices.

Inventory information is supplied by the buyer as required, for audit/reconciliation purposes. This would include the last receipt details for reconciliation with goods in transit from the seller.

Note: this is NOT SMI.

DELFOR messages are typically weekly, but if consumption is reported on a more frequent basis (for example, daily) then the INVRPT message may be more appropriate.

UNB+UNOW:4+123456789:1:X+987654321:1:X+021209:1909+88+X:AA+DELFOR++1+X+1'

UNH+1+DELFOR:D:10A:UN:EDDF10'

BGM+E::8+5678+9'

DTM+137:20100217:102'

RFF+ALM:5677'

RFF+CT:999456'

NAD+BY+MAGIMAX LTD::92'

NAD+SE+ABC SUPPLIES::91'

CTA+PD+:PETER SMITH'

COM+0756-551459:TE'

GEI+3+94'

NAD+DP+MAGIMAX STORES LTD::92'

LIN+1++ABC00071:BP::92'

PIA+1+ACT2T:VP::91'

QTY+145:10123:PCE'

DTM+366:20100217:102'

QTY+48:5629:PCE'

DTM+50:20100218:102'

RFF+AAK:DA1234'

QTY+58:6643:PCE'

RFF+TN:12345'

QTY+3:1500:PCE'

SCC+1'

QTY+131:500:PCE'

DTM+2:20100225:102'

RFF+ON:6785432:1'

SCC+4'

QTY+131:500:PCE'

DTM+158:20100316:102'

DTM+159:20100322:102'

SCC+4'

QTY+131:500:PCE'

DTM+158:20100323:102'

DTM+159:20100329:102'

UNT+34+1'

UNZ+1+88'