



The Global Network for B2B Integration in High Tech Industries

EDIFICE Message Implementation Guideline Blanket Purchase Order

ORDERS Issue EDBO10

Endorsed on 15 June 2011

Based on UN/EDIFACT D.10A ORDERS message

Copyright ©EDIFICE 2011

All rights reserved. No part of this publication may be reproduced or transmitted in any form or by any means without prior permission of EDIFICE.

Notwithstanding the fact that the utmost care has been observed in the collecting, drawing up and formulating of data, EDIFICE can under no circumstances be held liable for errors, omissions or misinterpretations as a result of the information compiled in the guidelines.

EDIFICE
The Global Network for B2B Integration in High Tech industries
EDIFICE secretariat
Dora Cresens
Tiensestraat 12
B-3320 Hoegaarden
Belgium
Tel: +32 475 85 40 39
Email: Dora.Cresens@edifice.org

TABLE OF CONTENTS

COMPARISON TO PREVIOUS ISSUE 3
EDIFICE FUNCTIONAL DEFINITION 5
REFERENCES 6
EXPLANATORY NOTES 6
MESSAGE STRUCTURE CHART..... 7
BRANCHING DIAGRAM 8
SEGMENT DESCRIPTION 10
SEGMENT DETAILS 14
EXAMPLES 40

COMPARISON TO PREVIOUS ISSUE

Issue EDBO10 of 1 June 2011: Upgrade to UN/EDIFACT Directory D.10A

The only structural change that occurs is the renumbering of the Segment Groups from SG29 onwards : A group of segments providing ordering details of the individual line items i.e. ordered products for delivery or services.

EDIFICE recommends to make use of EDIFACT code lists.

1. Where possible the earlier references to UN/ECE Recommendations were removed and EDIFACT qualifiers are used instead.
2. A number of EDIFICE defined qualifiers were replaced with relevant EDIFACT qualifiers or were completely removed when not in use. In some cases new EDIFICE qualifiers were defined since the old qualifiers have been included in the EDIFACT code list with a different definition

The summary of all qualifier changes in this MIG is listed below:

| Place | EDIFICE Code (*) | Replaced with EDIFACT code/EDIFICE code (*)/Removed/Added |
|---------------|--|--|
| All DTM-2005 | X03=CCYMMDDHHMMZZZZ (*) X04=CCYMMDDHHMMSSZZZZ (*) | 205=CCYMMDDHHMMZHHMM Removed |
| SG32-PRI-5375 | CP=Current Price (*) | Removed |

Issue EDBO04 of 1 June 2005:

- Upgrade to UN/EDIFACT Code list D.04B

Replacement of EDIFICE codes with standard codes.

- SG34 - PAC - DE 7065:

'CN' Container replaced with 'CN' Container, not otherwise specified as transport equipment

'PE' Pallet replaced with 'PX' Pallet

12 May 2004 : EDIFIX 5.0 Technical Upgrade

- The 'KMT' qualifier in SEG QTY and PRI DE 6411 is now defined as (*) EDIFICE code. UN/ECE Recommendation 20 specifies 'KTM' as qualifier for 'kilometre'.

03 November 2003 : Correction of SG Structure. This change does not affect the functionality of the message, it only affects the documentation.

SG28 LIN-PIA-IMD-QTY-ALI-**FTX**-SG32-SG33-SG34-SG38-SG39 - Changed to SG28 LIN-PIA-IMD-QTY-ALI-SG32-SG33-SG34-SG38-SG39

21 May 2003: EDIFIX 4.2 Technical upgrade; review and correction of examples

Issue EDBO03 of 13 November 2002 is based on UN/EDIFACT D97.A / Code List D01.A

- Addition of the following code value:

SG28, LIN segment, CO C212, DE 7143 codes 'SRV' EAN.UCC Global Trade Item Number

SG28, PIA segment, CO C212, DE 7143 codes 'SRV' EAN.UCC Global Trade Item Number

Issue EDBO02; Publication date 29 May 2002 – addition of recommended set of DTM qualifiers

Issue EDBO02 includes the changes that have been made to the issue 1 of the Blanket Order document endorsed by the EDIFICE Plenary on 6 September 1993. The changes are as follows:

- Recast from the 92.1 version of the UN/EDIFACT directory to the D.97A version,

- Addition of the following code values:

SG1, RFF segment, DE 1153, code 'GC' Government contract number

SG2, NAD segment, DE 3035, code 'AK' Acknowledgement recipient

SG2, NAD segment, DE 3055, code '16' DUNS (Dun & Bradstreet)

SG5, COM segment, DE 3155, code 'EM' Electronic mail

SG28, LIN segment, DE 7143, codes 'DI' Distributor's part number

'MF' Manufacturer's (producer's) article number and

'UP' UPC (Universal product code)

SG28, LIN segment, DE 3055, codes '89' Assigned by distributor

'90' Assigned by manufacturer and

'113' US, UCC (Uniform Code Council)

SG28, PIA segment, DE 7143, codes 'AA' Product version number

'CL' Color number

'DI' Distributor's part number
'MF' Manufacturer's (producer's) article number
'MN' Model number
'SN' Serial number and
'UP' UPC (Universal product code)

SG28, PIA segment, DE 3055, codes '89' Assigned by distributor
'90' Assigned by manufacturer and
'113' US, UCC (Uniform Code Council)

SG28, IMD segment, DE 7081, code '26' Ship to line

SG32, PRI segment, DE 5375, code 'DI' Distributor

SG33, RFF segment, DE 1153, code 'GC' Government contract number

SG34, PAC segment, CO C202, DE 3055, code '116' US, ANSI ASC X12,

- Addition of the following segment groups/segment:

SG1, DTM segment

SG3

SG33, DTM segment

SG34, QTY segment

SG38

SG39,

- Replacement of the following codes:

SG6, TAX segment, DE 5283, code '9' to '7' Tax

SG32, PRI segment, CO C509, DE 5125, code 'CAL' to 'AAA' Calculation net,

- Deletion of the following code values:

SG5, COM segment, DE 3155, code 'TL' Telex

SG28, PIA segment, DE 7143, code 'CCM' COCOM list number,

- Usage changed for the following segment groups/segments/data elements:

BGM segment, DE 1225, X to A

SG1, D..2 to A..3

SG2, R..5 to R..6

SG5, COM segment, R..3 to O..3

SG5, CTA segment, CO C056, DE 3412, A to D

SG6, TAX segment, CO C243, X to D

SG6, TAX segment, DE 5305, X to R

SG6, TAX segment, DE 3446, R to X

SG28, R..200000 to R..9999

SG28, PIA segment, D..12 to D..10

SG28, IMD segment, DE 7077, X to D

SG28, IMD segment, DE 7081, R to O

SG28, IMD segment, CO C273, X to D

SG33, R..4 to R..5

SG34, PAC segment, CO C202, DE 3055, X to D,

- Where UN/ECE Recommendations are referenced the most commonly used codes have been identified,

- Alignment of segments and composite data elements to ensure conformance (data harmonization) across all EDIFICE Implementation Guidelines,

- Update of the REFERENCES and EXPLANATORY NOTES section to comply with the EDIFICE Standards for Documentation of Message Implementation Guidelines issue 3,

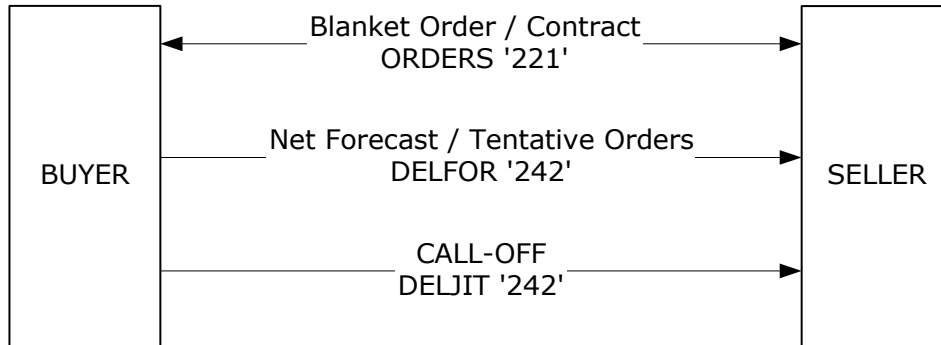
- Update of examples,

- Documentation adjustments resulting from the use of GEFEG's EdiFix Message Implementation Guidelines documentation tool,

- Correction of typographical errors.

EDIFICE FUNCTIONAL DEFINITION

The Blanket Order is part of a business cycle which includes forecast, and call-off activities. It will normally be used where trading partners have a stable trading environment, and multiple deliveries of stable product requirements exist. The Blanket Order will order goods over an extended time period but where requirements such as schedules and locations for delivery are not known. This information should be transmitted using Forecast/Call-Off (DELFOR) or JIT-Delivery (DELJIT) messages, or by non-EDI means or by a combination of these.



It should be noted that the Blanket Order is a specific implementation of the UN/EDIFACT ORDERS message.

The Blanket Order establishes the procurement relationship between the trading partners, allowing them to implement the forecast and call-off activity and to carry out payment cycle activities by providing the order number.

Trading partners must agree the point of commitment to purchase specific quantities of products prior to using a Blanket Order. The point of commitment may be at the Blanket Order stage, or it may be later in the business cycle, for example a defined number of weeks prior to delivery, which would be communicated in the Forecast/Call-Off (DELFOR) message.

The Blanket Order can be used in three different ways:

1. For ordering parts for delivery over a defined extended period of time (e.g. 1 year). The Blanket Order ceases to be effective at the end of the time period. The Blanket Order must at least contain statements of the description and time period of the order. Where possible the price should be contained within the message.
2. For ordering a defined quantity of product for delivery over an undefined extended time period (e.g. 100,000 pieces estimated as 2 years requirement). The Blanket Order ceases to be effective when the 100,000 pieces are delivered. The Blanket Order must at least contain statements of the description and the quantity of goods to be ordered. Where possible the price should be contained within the message.
3. For ordering a defined quantity of product for delivery over a defined time period (e.g. 100,000 pieces within 1 year). The defined quantity must be delivered within the time period. The Blanket Order contains the information required in both Use 1 and Use 2 above.

The Blanket Order may contain one or multiple line items.

The EDIFICE implementation guideline for the utilisation of the EDIFACT ORDERS message assumes that a business agreement exists, which defines all standard, basic trading terms and conditions as agreed between the two parties. As such a Blanket Order always constitutes a business transaction under this agreement, to which it will refer for basic terms and conditions.

The following additional principles apply:

- All Blanket Orders should have a unique document number assigned by the buyer and this must be sent in the BGM segment.
- The buyer's and seller's identification must always be present in the message, and this information must be sent in the NAD segment.
- One item number (Product Number) agreed to be the primary reference number between the buyer and the seller should be used to identify the item being ordered. Only if a service is ordered for which no code identification exists, may the primary reference be replaced by an item description.
- Data at detail level will not override data at header level.

REFERENCES

Refer to the document : Reference list for the EDIFICE message guidelines – Issue 1

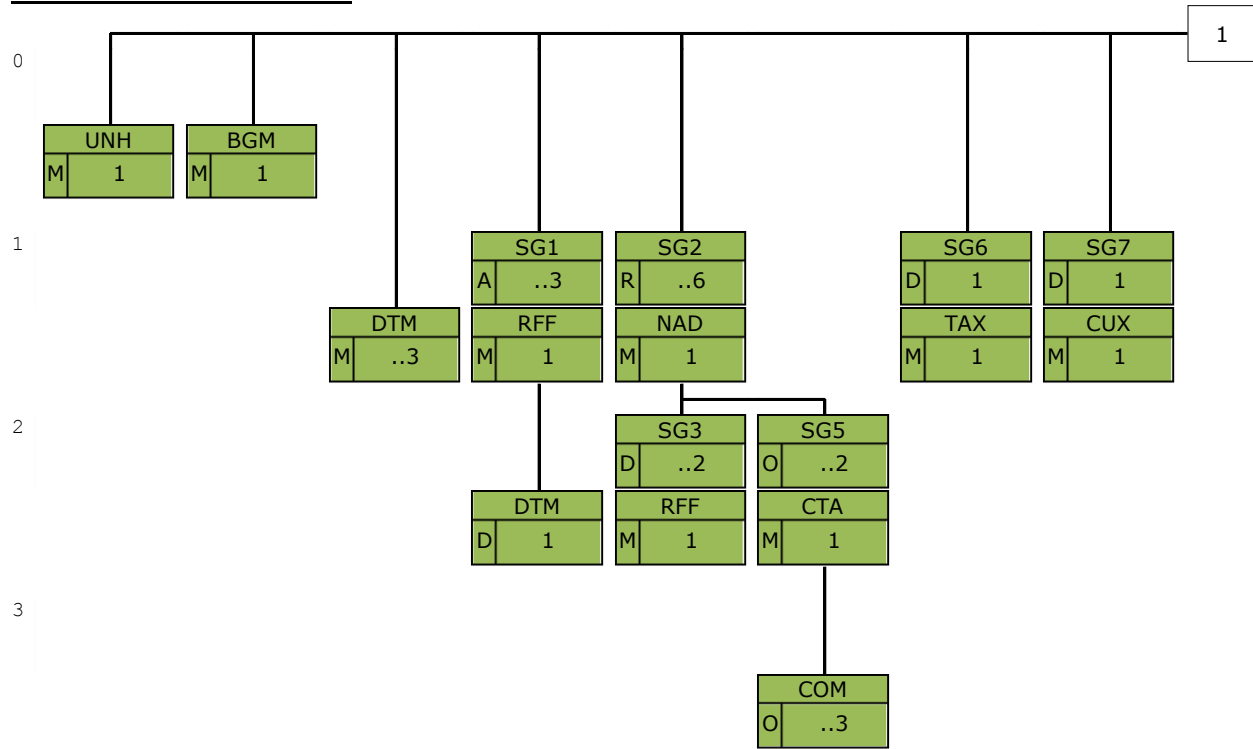
EXPLANATORY NOTES

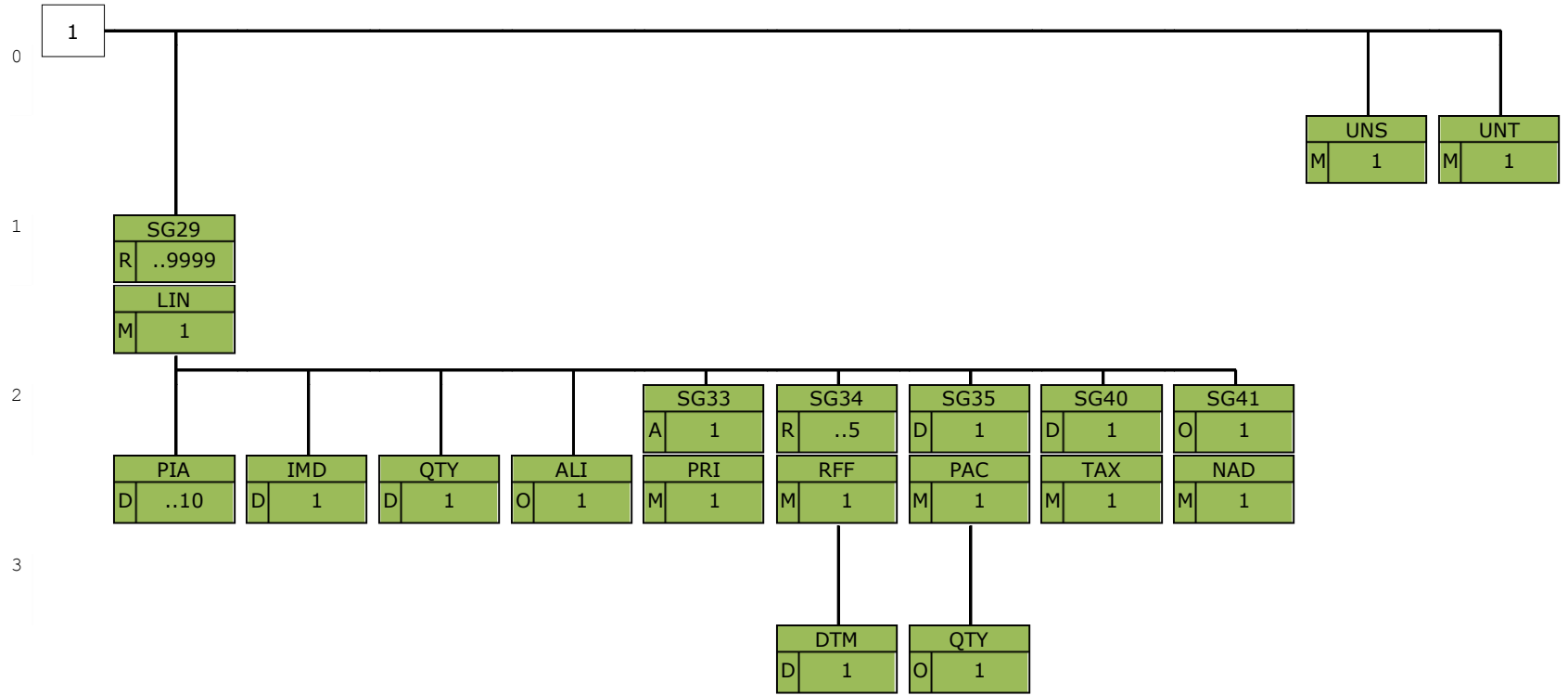
Refer to the document : Explanatory notes for the EDIFICE message guidelines – Issue 1

MESSAGE STRUCTURE CHART

| | | |
|------|------------------------|---------|
| UNH | Message header | M1 |
| BGM | Beginning of message | M1 |
| DTM | Date/time/period | M..3 |
| SG1 | | A..3 |
| RFF | Reference | M1 |
| DTM | Date/time/period | D1 |
| SG2 | | R..6 |
| NAD | Name and address | M1 |
| SG3 | | D..2 |
| RFF | Reference | M1 |
| SG5 | | O..2 |
| CTA | Contact information | M1 |
| COM | Communication contact | O..3 |
| SG6 | | D1 |
| TAX | Duty/tax/fee details | M1 |
| SG7 | | D1 |
| CUX | Currencies | M1 |
| SG29 | | R..9999 |
| LIN | Line item | M1 |
| PIA | Additional product id | D..10 |
| IMD | Item description | D1 |
| QTY | Quantity | D1 |
| ALI | Additional information | O1 |
| SG33 | | A1 |
| PRI | Price details | M1 |
| SG34 | | R..5 |
| RFF | Reference | M1 |
| DTM | Date/time/period | D1 |
| SG35 | | D1 |
| PAC | Package | M1 |
| QTY | Quantity | O1 |
| SG40 | | D1 |
| TAX | Duty/tax/fee details | M1 |
| SG41 | | O1 |
| NAD | Name and address | M1 |
| UNS | Section control | M1 |
| UNT | Message trailer | M1 |

BRANCHING DIAGRAM





SEGMENT DESCRIPTION

UNH Message header

Function: A service segment heading, and uniquely identifying the message.
Usage: M1

BGM Beginning of message

Function: A segment uniquely identifying the message by means of its coded name, number and function.
Usage: M1

DTM Date/time/period

Function: A segment specifying the date of creation of the message and, other dates relevant to the whole message.
Usage: M..3

SG1 RFF-DTM

Function: A group of segments referencing documents and their dates, relating to the whole message.
Usage: A..3
Notes: One RFF segment specifying contract or quote information should be present, preferably at header level. If this information is given at detail level, it must not appear here.
The DTM segment must be sent where local law requires the date of a reference document to be sent.

RFF Reference

Function: A segment specifying a document reference number.
Usage: M1

DTM Date/time/period

Function: A segment specifying the date of the reference document.
Usage: D 1

SG2 NAD-SG3-SG5

Function: A group of segments identifying the parties involved and their associated information, relevant to the whole message.
Usage: R..6
Notes: The NAD segments that identify the buyer and seller must be present.
SG3 is used if EC regulations and/or country law requires reference numbers to be sent.

NAD Name and address

Function: A segment identifying the function and coded identification, name and address of a party involved.
Usage: M1

SG3 RFF

Function: A group of segments giving references relating to the identified buying party involved.
Usage: D..2
Notes:

RFF Reference

Function: A segment specifying a company specific reference.
Usage: M1

SG5 CTA-COM

Function: A group of segments giving contact details of the specific person or department within the identified buying party involved, to whom communication should be directed.
Usage: O..2
Notes: This segment group will only be used under the NAD identifying the buyer.

CTA Contact information

Function: A segment identifying a person or department, and their function.
Usage: M1

COM Communication contact

Function: A segment identifying a communications type and number.
Usage: O..3

SG6 TAX

Function: A group of segments specifying tax related information, applicable to the whole message.
Usage: D 1
Notes: Used if country law requires tax to be specified.

TAX Duty/tax/fee details

Function: A segment specifying Value Added Tax, category and rate.
Usage: M 1

SG7 CUX

Function: A group of segments specifying the currency, valid for the whole message.
Usage: D 1
Notes: The currency must be specified if prices and/or amounts are sent.

CUX Currencies

Function: A segment specifying the order currency for all prices and/or amounts.
Usage: M 1

SG29 LIN-PIA-IMD-QTY-ALI-SG33-SG34-SG35-SG40-SG41

Function: A group of segments providing ordering details of the individual line items i.e. ordered products for delivery or services.
Usage: R..9999
Notes: The PIA segment is dependent on whether the primary reference to the line item being ordered is insufficient to identify the item.
The IMD segment is used to provide an additional description of the primary reference to the line item being ordered. It may also be used for items that can not be identified by a code or article number.
The QTY segment is used if a definite quantity for delivery needs to be specified.
SG35 is used to specify any alternative packaging methods which have been agreed between trading partners.
SG40 is used if country law requires tax to be specified.

LIN Line item

Function: A segment identifying a line item by its item number, and agreed to be the primary reference number between the buyer and seller.
The segment also carries a sequence number assigned to the line item within the message.
Usage: M 1

PIA Additional product id

Function: A segment providing additional identification numbers for the line item.
Usage: D..10

IMD Item description

Function: A segment specifying ship to stock or ship to line quality and/or an additional description in clear or coded form, for the line item.
Usage: D 1

QTY Quantity

Function: A segment specifying the total quantity for delivery for the line item.
Usage: D 1

ALI Additional information

Function: A segment indicating the country of origin for the line item.
Usage: O 1

SG33 PRI

Function: A group of segments specifying pricing information for the line item.
Usage: A 1
Notes:

PRI Price details

Function: A segment specifying the line item price and the qualifying information.
Usage: M 1

SG34 RFF-DTM

Function: A group of segments specifying references for the line item.
Usage: R ..5
Notes: The DTM segment must be sent where local law requires the date of a reference document to be sent.

RFF Reference

Function: A segment specifying the line item reference number as given by the buyer, or a document reference number.
Usage: M 1

DTM Date/time/period

Function: A segment specifying the date of the reference document.
Usage: D 1

SG35 PAC-QTY

Function: A group of segments specifying product packaging information.
Usage: D 1
Notes:

PAC Package

Function: A segment specifying the product package type.
Usage: M 1

QTY Quantity

Function: A segment specifying the number of products contained in the package type.
Usage: O 1

SG40 TAX

Function: A group of segments specifying tax related information for the line item.
Usage: D 1
Notes:

TAX Duty/tax/fee details

Function: A segment specifying Value Added Tax, category and rate for the line item.
Usage: M 1

SG41 NAD

Function: A group of segments identifying the parties involved and their associated information, for the line item.
Usage: O 1
Notes: SG41 is only used when DE 3035 in NAD = 'BY'.

NAD Name and address

Function: A segment identifying the manufacturer's code, for the line item.
Usage: M 1

UNS Section control

Function: A service segment separating detail and summary section.
Usage: M1

UNT Message trailer

Function: A service segment ending, and providing information for checking the completeness of a message.
Usage: M1

SEGMENT DETAILS



UNH Message header

Function: A service segment heading, and uniquely identifying the message.

Usage : M1

Notes : Refer to EDIFICE Utilisation of the UN/EDIFACT Service Segments, Issue EDSS10

| Ref. | Rep. | Name | | EDIFICE Utilisation |
|------|--------|---|---|--|
| 0062 | an..14 | M MESSAGE REFERENCE NUMBER | M | Transmission message count from 1 ORDERS = Purchase order message D = Draft version/UN/EDIFACT Directory 10A = Release 2010 - A UN = UN/CEFACT EDBO10 = Blanket Order Issue EDBO10 |
| S009 | | M MESSAGE IDENTIFIER | M | |
| 0065 | an..6 | M Message type | M | |
| 0052 | an..3 | M Message version number | M | |
| 0054 | an..3 | M Message release number | M | |
| 0051 | an..3 | M Controlling agency, coded | M | |
| 0057 | an..6 | C Association assigned code | R | |
| 0110 | an..6 | C Code list directory version number | N | |
| 0113 | an..6 | C Message type sub-function identification | N | |
| 0068 | an..35 | C COMMON ACCESS REFERENCE | N | |
| S010 | | C STATUS OF THE TRANSFER | N | |
| 0070 | n..2 | M Sequence of transfers | N | |
| 0073 | a1 | C First and last transfer | N | |
| S016 | | C MESSAGE SUBSET IDENTIFICATION | N | |
| 0115 | an..14 | M Message subset identification | N | |
| 0116 | an..3 | C Message subset version number | N | |
| 0118 | an..3 | C Message subset release number | N | |
| 0051 | an..3 | C Controlling agency, coded | N | |
| S017 | | C MESSAGE IMPLEMENTATION GUIDELINE IDENTIFICATION | N | |
| 0121 | an..14 | M Message implementation guideline identification | N | |
| 0122 | an..3 | C Message implementation guideline version number | N | |
| 0124 | an..3 | C Message implementation guideline release number | N | |
| 0051 | an..3 | C Controlling agency, coded | N | |
| S018 | | C SCENARIO IDENTIFICATION | N | |
| 0127 | an..14 | M Scenario identification | N | |
| 0128 | an..3 | C Scenario version number | N | |
| 0130 | an..3 | C Scenario release number | N | |
| 0051 | an..3 | C Controlling agency, coded | N | |

BGM Beginning of message

Function: A segment uniquely identifying the message by means of its coded name, number and function.

Usage : M1

Notes :

| Ref. | Rep. | Name | | EDIFICE Utilisation |
|------|--------|-------------------------------------|---|----------------------------|
| C002 | | C DOCUMENT/MESSAGE NAME | R | |
| 1001 | an..3 | C Document name code | R | 221 = Blanket order |
| 1131 | an..17 | C Code list identification code | N | |
| 3055 | an..3 | C Code list responsible agency code | N | |
| 1000 | an..35 | C Document name | N | |
| C106 | | C DOCUMENT/MESSAGE IDENTIFICATION | R | |
| 1004 | an..70 | C Document identifier | R | Blanket order number |
| 1056 | an..9 | C Version identifier | N | |
| 1060 | an..6 | C Revision identifier | N | |
| 1225 | an..3 | C MESSAGE FUNCTION CODE | A | 9 = Original |
| 4343 | an..3 | C RESPONSE TYPE CODE | N | |

DTM Date/time/period

Function: A segment specifying the date of creation of the message and, other dates relevant to the whole message.

Usage : M..3

Notes : It is required to specify the date of creation of the message.

| Ref. | Rep. | Name | | EDIFICE Utilisation |
|------|--------|--|---|---|
| C507 | | M DATE/TIME/PERIOD | M | |
| 2005 | an..3 | M Date or time or period function code qualifier | M | 137 = Document issue date time <i>Document Creation date</i> 158 = Horizon start date 159 = Horizon end date |
| 2380 | an..35 | C Date or time or period text | R | |
| 2379 | an..3 | C Date or time or period format code | R | 102 = CCYMMDD 203 = CCYMMDDHHMM 205 = CCYMMDDHHMMZHHMM <i>Replaces EDIFICE code</i> <i>X03=CCYMMDDHHMMZZZZ</i> 303 = CCYMMDDHHMMZZZ <i>ZZZ = Time zone</i> 304 = CCYMMDDHHMMSSZZZ <i>ZZZ = Time zone</i> |

SG1 RFF-DTM

RFF Reference

Function: A segment specifying a document reference number.
 Usage : M1
 Notes :

| Ref. | Rep. | Name | | EDIFICE Utilisation |
|------|--------|----------------------------|---|---|
| C506 | | M REFERENCE | M | AAD = Contract document addendum identifier CT = Contract number GC = Government contract number PR = Price quote number |
| 1153 | an..3 | M Reference code qualifier | M | |
| 1154 | an..70 | C Reference identifier | R | |
| 1156 | an..6 | C Document line identifier | N | |
| 1056 | an..9 | C Version identifier | N | |
| 1060 | an..6 | C Revision identifier | N | |

SG1 RFF-DTM**DTM Date/time/period**

Function: A segment specifying the date of the reference document.

Usage : D1

Notes :

| Ref. | Rep. | Name | | EDIFICE Utilisation |
|------|--------|---|---|---|
| C507 | | M DATE/TIME/PERIOD | M | |
| 2005 | an..3 | M Date or time or period function code qualifier | M | 171 = Reference date/time |
| 2380 | an..35 | C Date or time or period text | R | |
| 2379 | an..3 | C Date or time or period format code | R | 102 = CCYYMMDD 203 = CCYYMMDDHHMM 205 = CCYYMMDDHHMMZHHMM <i>Replaces EDIFICE code</i> <i>X03=CCYYMMDDHHMMZZZZ</i> 303 = CCYYMMDDHHMMZZZ <i>ZZZ = Time zone</i> 304 = CCYYMMDDHHMMSSZZZ <i>ZZZ = Time zone</i> |

SG2 NAD-SG3-SG5
NAD Name and address

Function: A segment identifying the function and coded identification, name and address of a party involved.

Usage : M1

Notes : It is advised that the party identification CO C082 be used. When CO C082 cannot be used it is recommended to use the structured name and address CO C080 through DE 3207 rather than the unstructured one CO C058.

| Ref. | Rep. | Name | | EDIFICE Utilisation |
|------|--------|---|---|---|
| 3035 | an..3 | M PARTY FUNCTION CODE QUALIFIER | M | AK = Acknowledgement recipient BY = Buyer DP = Delivery party FW = Freight forwarder IV = Invoicee SE = Seller 9 = GS1 16 = US, D&B (Dun & Bradstreet Corporation) 91 = Assigned by seller or seller's agent 92 = Assigned by buyer or buyer's agent |
| C082 | | C PARTY IDENTIFICATION DETAILS | A | |
| 3039 | an..35 | M Party identifier | M | |
| 1131 | an..17 | C Code list identification code | N | |
| 3055 | an..3 | C Code list responsible agency code | R | |
| C058 | | C NAME AND ADDRESS | D | |
| 3124 | an..35 | M Name and address description | M | |
| 3124 | an..35 | C Name and address description | O | |
| 3124 | an..35 | C Name and address description | O | |
| 3124 | an..35 | C Name and address description | O | |
| C080 | | C PARTY NAME | D | |
| 3036 | an..70 | M Party name | M | |
| 3036 | an..70 | C Party name | O | |
| 3036 | an..70 | C Party name | O | |
| 3036 | an..70 | C Party name | O | |
| 3036 | an..70 | C Party name | O | |
| 3045 | an..3 | C Party name format code | N | |
| C059 | | C STREET | D | |
| 3042 | an..35 | M Street and number or post office box identifier | M | |
| 3042 | an..35 | C Street and number or post office box identifier | O | |
| 3042 | an..35 | C Street and number or post office box identifier | O | |
| 3042 | an..35 | C Street and number or post office box identifier | O | |
| 3164 | an..35 | C CITY NAME | D | |
| C819 | | C COUNTRY SUBDIVISION DETAILS | C | |
| 3229 | an..9 | C Country subdivision identifier | D | |
| 1131 | an..17 | C Code list identification code | N | |
| 3055 | an..3 | C Code list responsible agency code | N | |
| 3228 | an..70 | C Country subdivision name | N | |
| 3251 | an..17 | C POSTAL IDENTIFICATION CODE | D | |
| 3207 | an..3 | C COUNTRY IDENTIFIER | D | Use ISO 3166, 2 alpha code |

SG3 RFF

RFF Reference

Function: A segment specifying a company specific reference.

Usage : M1

Notes :

| Ref. | Rep. | Name | | EDIFICE Utilisation |
|------|--------|----------------------------|---|--|
| C506 | | M REFERENCE | M | VA = VAT registration number GN = Government reference number |
| 1153 | an..3 | M Reference code qualifier | M | |
| 1154 | an..70 | C Reference identifier | R | |
| 1156 | an..6 | C Document line identifier | N | |
| 1056 | an..9 | C Version identifier | N | |
| 1060 | an..6 | C Revision identifier | N | |

SG5 CTA-COM

CTA Contact information

Function: A segment identifying a person or department, and their function.

Usage : M1

Notes :

| Ref. | Rep. | Name | EDIFICE Utilisation | |
|------|---------|-------------------------|---------------------|--|
| 3139 | an..3 | C CONTACT FUNCTION CODE | R | PD = Purchasing contact SC = Schedule contact If a code is available use DE 3413, otherwise use DE 3412. |
| C056 | | C CONTACT DETAILS | R | |
| 3413 | an..17 | C Contact identifier | D | |
| 3412 | an..256 | C Contact name | D | |

SG5 CTA-COM**COM Communication contact**

Function: A segment identifying a communications type and number.

Usage : 0..3

Notes :

| Ref. | Rep. | Name | | EDIFICE Utilisation |
|------|---------|------------------------------------|---|---|
| C076 | | M COMMUNICATION CONTACT | M | |
| 3148 | an..512 | M Communication address identifier | M | |
| 3155 | an..3 | M Communication means type code | M | |
| | | | | EM = Electronic mail FX = Telefax TE = Telephone |

SG6 TAX

TAX Duty/tax/fee details

Function: A segment specifying Value Added Tax, category and rate.
 Usage : M1
 Notes : CO C243 is not used when DE 5305 = 'E'.

| Ref. | Rep. | Name | | EDIFICE Utilisation |
|------|--------|---|---|---|
| 5283 | an..3 | M DUTY OR TAX OR FEE FUNCTION CODE QUALIFIER | M | 7 = Tax |
| C241 | | C DUTY/TAX/FEE TYPE | R | |
| 5153 | an..3 | C Duty or tax or fee type name code | R | VAT = Value added tax |
| 1131 | an..17 | C Code list identification code | N | |
| 3055 | an..3 | C Code list responsible agency code | N | |
| 5152 | an..35 | C Duty or tax or fee type name | N | |
| C533 | | C DUTY/TAX/FEE ACCOUNT DETAIL | N | |
| 5289 | an..6 | M Duty or tax or fee account code | N | |
| 1131 | an..17 | C Code list identification code | N | |
| 3055 | an..3 | C Code list responsible agency code | N | |
| 5286 | an..15 | C DUTY OR TAX OR FEE ASSESSMENT BASIS QUANTITY | N | |
| C243 | | C DUTY/TAX/FEE DETAIL | D | |
| 5279 | an..7 | C Duty or tax or fee rate code | N | |
| 1131 | an..17 | C Code list identification code | N | |
| 3055 | an..3 | C Code list responsible agency code | N | |
| 5278 | an..17 | C Duty or tax or fee rate | R | Tax rate |
| 5273 | an..12 | C Duty or tax or fee rate basis code | N | |
| 1131 | an..17 | C Code list identification code | N | |
| 3055 | an..3 | C Code list responsible agency code | N | |
| 5305 | an..3 | C DUTY OR TAX OR FEE CATEGORY CODE | R | AA = Lower rate VAT at a lower rate than standard rate E = Exempt from tax S = Standard rate Z = Zero rated goods |
| 3446 | an..20 | C PARTY TAX IDENTIFIER | N | |
| 1227 | an..3 | C CALCULATION SEQUENCE CODE | N | |
| 5307 | an..3 | C TAX OR DUTY OR FEE PAYMENT DUE DATE CODE | N | |

SG7 CUX

CUX Currencies

Function: A segment specifying the order currency for all prices and/or amounts.
 Usage : M1
 Notes :

| Ref. | Rep. | Name | EDIFICE Utilisation | |
|------|-------|--|---------------------|----------------------------|
| C504 | | C CURRENCY DETAILS | R | |
| 6347 | an..3 | M Currency usage code qualifier | M | |
| 6345 | an..3 | C Currency identification code | R | 2 = Reference currency |
| 6343 | an..3 | C Currency type code qualifier | R | Use ISO 4217, 3 alpha code |
| 6348 | n..4 | C Currency rate | R | 9 = Order currency |
| C504 | | C CURRENCY DETAILS | N | |
| 6347 | an..3 | M Currency usage code qualifier | N | |
| 6345 | an..3 | C Currency identification code | N | |
| 6343 | an..3 | C Currency type code qualifier | N | |
| 6348 | n..4 | C Currency rate | N | |
| 5402 | n..12 | C CURRENCY EXCHANGE RATE | N | |
| 6341 | an..3 | C EXCHANGE RATE CURRENCY MARKET IDENTIFIER | N | |

SG29 LIN-PIA-IMD-QTY-ALI-SG33-SG34-SG35-SG40-SG41

LIN Line item

Function: A segment identifying a line item by its item number, and agreed to be the primary reference number between the buyer and seller.

The segment also carries a sequence number assigned to the line item within the message.

Usage : M1

Notes : For a line item referring to a service which has no coded identification, the primary identification is found in segment IMD, rather than in CO C212.

| Ref. | Rep. | Name | | EDIFICE Utilisation |
|------|--------|-------------------------------------|---|---|
| 1082 | an..6 | C LINE ITEM IDENTIFIER | R | It is required to assign a number to the line items within a message. The number is assigned by the sender of the message. The first line item within a message will be numbered 1 and further line items will be incremented by 1 for each new line. Primary reference BP = Buyer's part number EN = International Article Numbering Association (EAN) MF = Manufacturer's (producer's) article number SRV = EAN.UCC Global Trade Item Number SSS = Distributor's article identifier <i>Replaces EDIFICE code DI=Distributor's part number</i> UP = UPC (Universal product code) VP = Vendor's (seller's) part number 9 = GS1 89 = Assigned by distributor 90 = Assigned by manufacturer 91 = Assigned by seller or seller's agent 92 = Assigned by buyer or buyer's agent 113 = GS1 US |
| 1229 | an..3 | C ACTION CODE | N | |
| C212 | | C ITEM NUMBER IDENTIFICATION | A | |
| 7140 | an..35 | C Item identifier | R | |
| 7143 | an..3 | C Item type identification code | R | |
| 1131 | an..17 | C Code list identification code | N | |
| 3055 | an..3 | C Code list responsible agency code | R | |
| C829 | | C SUB-LINE INFORMATION | N | |
| 5495 | an..3 | C Sub-line indicator code | N | |
| 1082 | an..6 | C Line item identifier | N | |
| 1222 | n..2 | C CONFIGURATION LEVEL NUMBER | N | |
| 7083 | an..3 | C CONFIGURATION OPERATION CODE | N | |

SG29 LIN-PIA-IMD-QTY-ALI-SG33-SG34-SG35-SG40-SG41**PIA Additional product id**

Function: A segment providing additional identification numbers for the line item.

Usage : D..10

Notes : The 5 internal repetitions of CO C212 may be used, but EDIFICE recommends to only use the first occurrence.

| Ref. | Rep. | Name | | EDIFICE Utilisation |
|------|--------|-------------------------------------|---|--|
| 4347 | an..3 | M PRODUCT IDENTIFIER CODE QUALIFIER | M | 1 = Additional identification |
| C212 | | M ITEM NUMBER IDENTIFICATION | M | |
| 7140 | an..35 | C Item identifier | R | |
| 7143 | an..3 | C Item type identification code | R | AA = Product version number <i>Release number of a product</i> BP = Buyer's part number CL = Colour number CV = Customs article number DR = Drawing revision number DW = Drawing EC = Engineering change level EN = International Article Numbering Association (EAN) GS = General specification number MF = Manufacturer's (producer's) article number MN = Model number SG = Standard group of products (mixed assortment) SN = Serial number SSS = Distributor's article identifier <i>Replaces EDIFICE code DI=Distributor's part number</i> SRV = EAN.UCC Global Trade Item Number UP = UPC (Universal product code) VP = Vendor's (seller's) part number VX = Vendor specification number |
| 1131 | an..17 | C Code list identification code | N | |
| 3055 | an..3 | C Code list responsible agency code | R | 9 = GS1 89 = Assigned by distributor 90 = Assigned by manufacturer 91 = Assigned by seller or seller's agent 92 = Assigned by buyer or buyer's agent 113 = GS1 US |
| C212 | | C ITEM NUMBER IDENTIFICATION | O | As for first CO C212 |
| 7140 | an..35 | C Item identifier | R | |
| 7143 | an..3 | C Item type identification code | R | SSS = Distributor's article identifier <i>Replaces EDIFICE code DI=Distributor's part number</i> |
| 1131 | an..17 | C Code list identification code | N | |
| 3055 | an..3 | C Code list responsible agency code | R | |
| C212 | | C ITEM NUMBER IDENTIFICATION | O | As for first CO C212 |
| 7140 | an..35 | C Item identifier | R | |
| 7143 | an..3 | C Item type identification code | R | SSS = Distributor's article identifier <i>Replaces EDIFICE code DI=Distributor's part number</i> |
| 1131 | an..17 | C Code list identification code | N | |
| 3055 | an..3 | C Code list responsible agency code | R | |
| C212 | | C ITEM NUMBER IDENTIFICATION | O | As for first CO C212 |
| 7140 | an..35 | C Item identifier | R | |
| 7143 | an..3 | C Item type identification code | R | SSS = Distributor's article identifier <i>Replaces EDIFICE code DI=Distributor's part number</i> |
| 1131 | an..17 | C Code list identification code | N | |
| 3055 | an..3 | C Code list responsible agency code | R | |
| C212 | | C ITEM NUMBER IDENTIFICATION | O | As for first CO C212 |
| 7140 | an..35 | C Item identifier | R | |

| Ref. | Rep. | Name | EDIFICE Utilisation | |
|------|--------|-------------------------------------|---------------------|--|
| 7143 | an..3 | C Item type identification code | R | SSS = Distributor's article identifier <i>Replaces EDIFICE code DI=Distributor's part number</i> |
| 1131 | an..17 | C Code list identification code | O | |
| 3055 | an..3 | C Code list responsible agency code | R | |

SG29 LIN-PIA-IMD-QTY-ALI-SG33-SG34-SG35-SG40-SG41
IMD Item description

Function: A segment specifying ship to stock or ship to line quality and/or an additional description in clear or coded form, for the line item.

Usage : D1

Notes :

| Ref. | Rep. | Name | | EDIFICE Utilisation |
|------|---------|-------------------------------------|---|--|
| 7077 | an..3 | C DESCRIPTION FORMAT CODE | D | C = Code (from industry code list) F = Free-form 3 = Ship to stock 26 = Ship to line Use DE 7009 for a coded description. If no code is available use DE 7008 instead. |
| C272 | | C ITEM CHARACTERISTIC | C | |
| 7081 | an..3 | C Item characteristic code | O | |
| 1131 | an..17 | C Code list identification code | N | |
| 3055 | an..3 | C Code list responsible agency code | N | |
| C273 | | C ITEM DESCRIPTION | D | |
| 7009 | an..17 | C Item description code | A | |
| 1131 | an..17 | C Code list identification code | N | |
| 3055 | an..3 | C Code list responsible agency code | N | |
| 7008 | an..256 | C Item description | D | |
| 7008 | an..256 | C Item description | O | |
| 3453 | an..3 | C Language name code | N | |
| 7383 | an..3 | C SURFACE OR LAYER CODE | N | |

SG29 LIN-PIA-IMD-QTY-ALI-SG33-SG34-SG35-SG40-SG41

QTY Quantity

Function: A segment specifying the total quantity for delivery for the line item.

Usage : D1

Notes : The quantity is the total line item quantity to be delivered according to instructions to be transmitted either by the DELFOR or DELJIT messages or by non-EDI means, or a combination of these.

| Ref. | Rep. | Name | | EDIFICE Utilisation |
|------|--------|--------------------------------|---|---|
| C186 | | M QUANTITY DETAILS | M | |
| 6063 | an..3 | M Quantity type code qualifier | M | 21 = Ordered quantity |
| 6060 | an..35 | M Quantity | M | |
| 6411 | an..8 | C Measurement unit code | R | CLT = centilitre CMT = centimetre GRM = gram H87 = piece KGM = kilogram LTR = litre MGM = milligram MMT = millimetre MTK = square metre MTQ = cubic metre MTR = metre PCE = piece (*) EDIFICE Code 'PCE' is widely adopted by membership and preferred over the EDIFACT code 'H87' (*) EDIFICE code Other codes should be previously agreed between trading partners. |

SG29 LIN-PIA-IMD-QTY-ALI-SG33-SG34-SG35-SG40-SG41

ALI Additional information

Function: A segment indicating the country of origin for the line item.
 Usage : 01
 Notes :

| Ref. | Rep. | Name | | EDIFICE Utilisation |
|------|-------|--------------------------------|---|----------------------------|
| 3239 | an..3 | C COUNTRY OF ORIGIN IDENTIFIER | R | Use ISO 3166, 2 alpha code |
| 9213 | an..3 | C DUTY REGIME TYPE CODE | N | |
| 4183 | an..3 | C SPECIAL CONDITION CODE | N | |
| 4183 | an..3 | C SPECIAL CONDITION CODE | N | |
| 4183 | an..3 | C SPECIAL CONDITION CODE | N | |
| 4183 | an..3 | C SPECIAL CONDITION CODE | N | |
| 4183 | an..3 | C SPECIAL CONDITION CODE | N | |

SG33 PRI

PRI Price details

Function: A segment specifying the line item price and the qualifying information.

Usage : M1

Notes :

| Ref. | Rep. | Name | | EDIFICE Utilisation |
|------|-------|---|---|--|
| C509 | | C PRICE INFORMATION | R | |
| 5125 | an..3 | M Price code qualifier | M | AAA = Calculation net |
| 5118 | n..15 | C Price amount | R | |
| 5375 | an..3 | C Price type code | R | CA = Catalogue CT = Contract DI = Distributor PV = Provisional price QT = Quoted |
| 5387 | an..3 | C Price specification code | N | |
| 5284 | n..9 | C Unit price basis quantity | R | |
| 6411 | an..8 | C Measurement unit code | R | CLT = centilitre CMT = centimetre GRM = gram H87 = piece KGM = kilogram LTR = litre MGM = milligram MMT = millimetre MTK = square metre MTQ = cubic metre MTR = metre PCE = piece (*) EDIFICE Code 'PCE' is widely adopted by membership and preferred over the EDIFACT code 'H87' |
| 5213 | an..3 | C SUB-LINE ITEM PRICE CHANGE OPERATION CODE | N | (*) EDIFICE code, not included in UN/ECE Recommendation No. 20 Other codes should be previously agreed between trading partners. |

SG34 RFF-DTM

RFF Reference

Function: A segment specifying the line item reference number as given by the buyer, or a document reference number.

Usage : M1

Notes : Where the buyer's line item reference number is to be specified use DE 1156 qualified by code 'LI' in DE 1153.

For all other references use DE 1154 with the relevant qualifier. If this information is given at header level it must not appear here.

| Ref. | Rep. | Name | EDIFICE Utilisation | |
|------|--------|----------------------------|---------------------|---|
| C506 | | M REFERENCE | M | |
| 1153 | an..3 | M Reference code qualifier | M | AAD = Contract document addendum identifier CT = Contract number GC = Government contract number JB = Job number LI = Document line identifier <i>Buyer's original line item number</i> PR = Price quote number |
| 1154 | an..70 | C Reference identifier | D | |
| 1156 | an..6 | C Document line identifier | D | Within an order this must be a unique number which will be the key for identification of the line item. The number is assigned by the buyer, and it can only be assigned once during the lifetime of the order. It will be used, where needed, to refer to the original line item on any subsequent transactions relating to the order. Normally, the first line number on an order will be numbered 1 and further line items will be incremented by 1 for each new line. |
| 1056 | an..9 | C Version identifier | N | |
| 1060 | an..6 | C Revision identifier | N | |

SG34 RFF-DTM**DTM Date/time/period**

Function: A segment specifying the date of the reference document.

Usage : D 1

Notes :

| Ref. | Rep. | Name | | EDIFICE Utilisation |
|------|--------|--|---|---|
| C507 | | M DATE/TIME/PERIOD | M | |
| 2005 | an..3 | M Date or time or period function code qualifier | M | 171 = Reference date/time |
| 2380 | an..35 | C Date or time or period text | R | |
| 2379 | an..3 | C Date or time or period format code | R | 102 = CCYMMDD 203 = CCYMMDDHHMM 205 = CCYMMDDHHMMZHHMM <i>Replaces EDIFICE code</i> <i>X03=CCYMMDDHHMMZZZZ</i> 303 = CCYMMDDHHMMZZZ <i>ZZZ = Time zone</i> 304 = CCYMMDDHHMMSSZZZ <i>ZZZ = Time zone</i> |

SG35 PAC-QTY
PAC Package

Function: A segment specifying the product package type.

Usage : M1

Notes :

| Ref. | Rep. | Name | | EDIFICE Utilisation |
|------|--------|--|---|---|
| 7224 | n..8 | C PACKAGE QUANTITY | N | |
| C531 | | C PACKAGING DETAILS | N | |
| 7075 | an..3 | C Packaging level code | N | |
| 7233 | an..3 | C Packaging related description code | N | |
| 7073 | an..3 | C Packaging terms and conditions code | N | |
| C202 | | C PACKAGE TYPE | R | |
| 7065 | an..17 | C Package type description code | R | |
| | | | | BA = Barrel BB = Bobbin BE = Bundle BG = Bag BQ = Bottle, protected cylindrical BV = Bottle, protected bulbous BX = Box CG = Cage CN = Container, not otherwise specified as transport equipment CR = Crate CS = Case CT = Carton CX = Can, cylindrical DR = Drum EN = Envelope NE = Unpacked or unpackaged PC = Parcel PK = Package PU = Tray pack <i>Replaces code TRY90</i> PX = Pallet RL = Reel <i>Replaces code REL90</i> RO = Roll SW = Shrinkwrapped TN = Tin TU = Tube Other codes should be previously agreed between trading partners. |
| 1131 | an..17 | C Code list identification code | N | |
| 3055 | an..3 | C Code list responsible agency code | D | Only used if the code is taken from an external code list |
| 7064 | an..35 | C Type of packages | N | |
| C402 | | C PACKAGE TYPE IDENTIFICATION | N | |
| 7077 | an..3 | M Description format code | N | |
| 7064 | an..35 | M Type of packages | N | |
| 7143 | an..3 | C Item type identification code | N | |
| 7064 | an..35 | C Type of packages | N | |
| 7143 | an..3 | C Item type identification code | N | |
| C532 | | C RETURNABLE PACKAGE DETAILS | N | |
| 8395 | an..3 | C Returnable package freight payment responsibility code | N | |
| 8393 | an..3 | C Returnable package load contents code | N | |

SG35 PAC-QTY

QTY Quantity

Function: A segment specifying the number of products contained in the package type.

Usage : 01

Notes :

| Ref. | Rep. | Name | | EDIFICE Utilisation |
|------|--------|--------------------------------|---|-------------------------------|
| C186 | | M QUANTITY DETAILS | M | |
| 6063 | an..3 | M Quantity type code qualifier | M | 52 = Quantity per pack |
| 6060 | an..35 | M Quantity | M | |
| 6411 | an..8 | C Measurement unit code | N | |

SG40 TAX

TAX Duty/tax/fee details

Function: A segment specifying Value Added Tax, category and rate for the line item.

Usage : M1

Notes : CO C243 is not used when DE 5305 = 'E'.

| Ref. | Rep. | Name | | EDIFICE Utilisation |
|------|--------|---|---|--|
| 5283 | an..3 | M DUTY OR TAX OR FEE FUNCTION CODE QUALIFIER | M | 7 = Tax |
| C241 | | C DUTY/TAX/FEE TYPE | R | |
| 5153 | an..3 | C Duty or tax or fee type name code | R | VAT = Value added tax |
| 1131 | an..17 | C Code list identification code | N | |
| 3055 | an..3 | C Code list responsible agency code | N | |
| 5152 | an..35 | C Duty or tax or fee type name | N | |
| C533 | | C DUTY/TAX/FEE ACCOUNT DETAIL | N | |
| 5289 | an..6 | M Duty or tax or fee account code | N | |
| 1131 | an..17 | C Code list identification code | N | |
| 3055 | an..3 | C Code list responsible agency code | N | |
| 5286 | an..15 | C DUTY OR TAX OR FEE ASSESSMENT BASIS QUANTITY | N | |
| C243 | | C DUTY/TAX/FEE DETAIL | D | |
| 5279 | an..7 | C Duty or tax or fee rate code | N | |
| 1131 | an..17 | C Code list identification code | N | |
| 3055 | an..3 | C Code list responsible agency code | N | |
| 5278 | an..17 | C Duty or tax or fee rate | R | Tax rate |
| 5273 | an..12 | C Duty or tax or fee rate basis code | N | |
| 1131 | an..17 | C Code list identification code | N | |
| 3055 | an..3 | C Code list responsible agency code | N | |
| 5305 | an..3 | C DUTY OR TAX OR FEE CATEGORY CODE | R | AA = Lower rate <i>VAT at a lower rate than standard rate</i> E = Exempt from tax S = Standard rate Z = Zero rated goods |
| 3446 | an..20 | C PARTY TAX IDENTIFIER | N | |
| 1227 | an..3 | C CALCULATION SEQUENCE CODE | N | |
| 5307 | an..3 | C TAX OR DUTY OR FEE PAYMENT DUE DATE CODE | N | |

SG41 NAD
NAD Name and address

Function: A segment identifying the manufacturer's code, for the line item.

Usage : M1

Notes :

| Ref. | Rep. | Name | | EDIFICE Utilisation |
|------|--------|---|---|---------------------------------------|
| 3035 | an..3 | M PARTY FUNCTION CODE QUALIFIER | M | MF = Manufacturer of goods |
| C082 | | C PARTY IDENTIFICATION DETAILS | R | |
| 3039 | an..35 | M Party identifier | M | Manufacturer's code |
| 1131 | an..17 | C Code list identification code | D | |
| 3055 | an..3 | C Code list responsible agency code | R | To be agreed between trading partners |
| C058 | | C NAME AND ADDRESS | N | |
| 3124 | an..35 | M Name and address description | N | |
| 3124 | an..35 | C Name and address description | N | |
| 3124 | an..35 | C Name and address description | N | |
| 3124 | an..35 | C Name and address description | N | |
| 3124 | an..35 | C Name and address description | N | |
| C080 | | C PARTY NAME | N | |
| 3036 | an..70 | M Party name | N | |
| 3036 | an..70 | C Party name | N | |
| 3036 | an..70 | C Party name | N | |
| 3036 | an..70 | C Party name | N | |
| 3036 | an..70 | C Party name | N | |
| 3045 | an..3 | C Party name format code | N | |
| C059 | | C STREET | N | |
| 3042 | an..35 | M Street and number or post office box identifier | N | |
| 3042 | an..35 | C Street and number or post office box identifier | N | |
| 3042 | an..35 | C Street and number or post office box identifier | N | |
| 3042 | an..35 | C Street and number or post office box identifier | N | |
| 3164 | an..35 | C CITY NAME | N | |
| C819 | | C COUNTRY SUBDIVISION DETAILS | N | |
| 3229 | an..9 | C Country subdivision identifier | N | |
| 1131 | an..17 | C Code list identification code | N | |
| 3055 | an..3 | C Code list responsible agency code | N | |
| 3228 | an..70 | C Country subdivision name | N | |
| 3251 | an..17 | C POSTAL IDENTIFICATION CODE | N | |
| 3207 | an..3 | C COUNTRY IDENTIFIER | N | |

UNS Section control

Function: A service segment separating detail and summary section.

Usage : M1

Notes :

| Ref. | Rep. | Name | | EDIFICE Utilisation |
|------|------|--------------------------|---|--|
| 0081 | a1 | M SECTION IDENTIFICATION | M | S = Detail/summary section separation |

UNT Message trailer

Function: A service segment ending, and providing information for checking the completeness of a message.

Usage : M1

Notes : Refer to EDIFICE Utilisation of the UN/EDIFACT Service Segments, Issue EDDS10

| Ref. | Rep. | Name | EDIFICE Utilisation | |
|------|--------|-----------------------------------|---------------------|---|
| 0074 | n..10 | M NUMBER OF SEGMENTS IN A MESSAGE | M | Count of all segments in the message, UNH and UNT included. |
| 0062 | an..14 | M MESSAGE REFERENCE NUMBER | M | Must be the same reference number as in DE 0062 of the UNH segment of this message. |

In the following 3 example messages the different usages are found entirely in the different use of the Header DTM and Detail QTY segments. All other information is identical.

EXAMPLES

EXAMPLE 1: BLANKET ORDER FOR A DEFINED TIME PERIOD

This example corresponds to EDIFICE Functional Definition Usage 1

UNB+UNOW:4+234567891:1:X+198765432:1:X+971201:1924+66+X:AA+ORDERS++1+X+1'
UNH+1+ORDERS:D:10A:UN:EDBO10'
BGM+221+6785432+9'
DTM+137:20101128:102'
DTM+158:20100101:102'
DTM+159:20101231:102'
RFF+CT:999456'
NAD+BY+MAGIMAX LTD::92'
CTA+PD+PETER SMITH'
COM+0756-551234:TE'
CTA+SC+:M BRODY'
COM+0756-551459:TE'
NAD+SE+PISCES SEMICONDUCTORS::92'
CUX+2:USD:9'
LIN+1++ABC0071:BP::92'
PIA+1+1167892:VP::91'
IMD++3'
ALI+US'
PRI+AAA:2.45:CT::1:PCE'
RFF+CT:M5311-93:24'
UNS+S'
UNT+21+1'
UNZ+1+66'

EXAMPLE 2: BLANKET ORDER FOR A DEFINED QUANTITY FOR DELIVERY

This example corresponds to EDIFICE Functional Definition Usage 2

UNB+UNOW:4+234567891:1:X+198765432:1:X+971201:1924+66+X:AA+ORDERS++1+X+1'
UNH+1+ORDERS:D:10A:UN:EDBO10'
BGM+221+6785432+9'
DTM+137:20101128:102'
RFF+CT:999456'
NAD+BY+MAGIMAX LTD::92'
CTA+PD+PETER SMITH'
COM+0756-551234:TE'
CTA+SC+:M BRODY'
COM+0756-551459:TE'
NAD+SE+PISCES SEMICONDUCTORS::92'
CUX+2:USD:9'
LIN+1++ABC0071:BP::92'
PIA+1+1167892:VP::91'
IMD++3'
QTY+21:100000:PCE'
ALI+US'
PRI+AAA:2.45:CT::1:PCE'
RFF+CT:M5311-93:24'
UNS+S'
UNT+20+1'
UNZ+1+66'

EXAMPLE 3: BLANKET ORDER FOR A DEFINED QUANTITY FOR DELIVERY AND TIME PERIOD

This example corresponds to EDIFICE Functional Definition Usage 3

UNB+UNOW:4+234567891:1:X+123465432:1:X+971201:1924+66+X:AA+ORDERS++1+X+1'
UNH+1+ORDERS:D:10A:UN:EDBO10'
BGM+221+6785432+9'
DTM+137:20101128:102'
DTM+158:20100101:102'
DTM+159:20101231:102'
RFF+CT:999456'
NAD+BY+MAGIMAX LTD::92'
CTA+PD+PETER SMITH'
COM+0756-551234:TE'
CTA+SC+:M BRODY'
COM+0756-551459:TE'
NAD+SE+PISCES SEMICONDUCTORS::92'
CUX+2:USD:9'
LIN+1++ABC0071:BP::92'
PIA+1+1167892:VP::91'
IMD++3'
QTY+21:100000:PCE'
ALI+US'
PRI+AAA:2.45:CT::1:PCE'
RFF+CT:M5311-93:24'
UNS+S'
UNT+22+1'
UNZ+1+66'