



The European B2B Forum for the Electronics Industry

EDIFICE Message Implementation Guideline

International Forward & Transport Message, instruction

IFTMIN Issue EDTI02

Endorsed 28 November 2001

Based on UN/EDIFACT D.97A IFTMIN Message

Copyright ©EDIFICE 2004

All rights reserved. No part of this publication may be reproduced or transmitted in any form or by any means without prior permission of EDIFICE.

Notwithstanding the fact that the utmost care has been observed in the collecting, drawing up and formulating of data, EDIFICE can under no circumstances be held liable for errors, omissions or misinterpretations as a result of the information compiled in the guidelines.

EDIFICE
The European B2B Forum for the Electronics Industry
EDIFICE secretariat
Dora Cresens
Tiensestraat 2
B-3320 Hoegaarden
Belgium
Tel: +32 16 76 54 40
Fax: +32 16 76 53 58
Email: Dora.Cresens@edifice.org

TABLE OF CONTENTS

TITLE	PAGE
COMPARISON TO PREVIOUS ISSUE	3
EDIFICE FUNCTIONAL DEFINITION	4
REFERENCES	5
EXPLANATORY NOTES	5
MESSAGE STRUCTURE CHART	9
BRANCHING DIAGRAM	8
SEGMENT GROUPS/SEGMENTS DESCRIPTION	12
UNH MESSAGE HEADER	19
BGM BEGINNING OF MESSAGE	20
DTM DATE/TIME/PERIOD	21
TSR TRANSPORT SERVICE REQUIREMENTS	22
MOA MONETARY AMOUNT	23
FTX FREE TEXT	24
CNT CONTROL TOTAL	25
SG2 - TOD TERMS OF DELIVERY	26
SG2 - LOC PLACE/LOCATION IDENTIFICATION	27
SG3 - RFF REFERENCE	28
SG3 - DTM DATE/TIME/PERIOD	29
SG6 - CPI CHARGE PAYMENT INSTRUCTIONS	30
SG7 - TCC TRANSPORT CHARGE/RATE CALCULATIONS	31
SG7 - MOA MONETARY AMOUNT	32
SG8 - TDT DETAILS OF TRANSPORT	33
SG9 - LOC PLACE/LOCATION IDENTIFICATION	34
SG9 - DTM DATE/TIME/PERIOD	35
SG11 - NAD NAME AND ADDRESS	36
SG11 - LOC PLACE/LOCATION IDENTIFICATION	38
SG12 - CTA CONTACT INFORMATION	39
SG12 - COM COMMUNICATION CONTACT	40
SG13 - DOC DOCUMENT/MESSAGE DETAILS	41
SG13 - DTM DATE/TIME/PERIOD	42
SG15 - RFF REFERENCE	43
SG18 - GID GOODS ITEM DETAILS	44
SG18 - HAN HANDLING INSTRUCTIONS	45
SG18 - MOA MONETARY AMOUNT	46
SG18 - PIA ADDITIONAL PRODUCT ID	47
SG18 - FTX FREE TEXT	48
SG19 - NAD NAME AND ADDRESS	49
SG19 - DTM DATE/TIME/PERIOD	50
SG20 - MEA MEASUREMENTS	51
SG21 - DIM DIMENSIONS	52
SG22 - RFF REFERENCE	53
SG22 - DTM DATE/TIME/PERIOD	54
SG23 - PCI PACKAGE IDENTIFICATION	55
SG23 - GIN GOODS IDENTITY NUMBER	56
SG31 - TCC TRANSPORT CHARGE/RATE CALCULATIONS	57
SG31 - MOA MONETARY AMOUNT	58
SG31 - QTY QUANTITY	59
SG31 - LOC PLACE/LOCATION IDENTIFICATION	60
SG32 - DGS DANGEROUS GOODS	61
SG32 - FTX FREE TEXT	62
SG33 - CTA CONTACT INFORMATION	63
SG33 - COM COMMUNICATION CONTACT	64
SG37 - EQD EQUIPMENT DETAILS	65
SG37 - MEA MEASUREMENTS	66
SG37 - DIM DIMENSIONS	67
SG37 - SEL SEAL NUMBER	68
UNT MESSAGE TRAILER	69
EXAMPLES	70 - 76

COMPARISON TO PREVIOUS ISSUE

21 May 2003 :

- EDIFICE Utilisation for SG11; SG21 DIM C211; SG31 MOA C516, QTY C186; SG31 DIM C211: changed from 'R' to 'M' according to UN/EDIFACT specifications – this does not affect the functionality of the message.
- EDIFIX 4.2 Technical upgrade; review and correction of examples

Issue EDTI02 of 13 November 2002 is based on UN/EDIFACT D97.A / Code List D01.A

- Addition of the following code value:
 - SG18, PIA segment, CO C212, DE 7143 code 'SRV' EAN.UCC Global Trade Item Number
'EN' International Article Numbering
Association (EAN)
 - 'UP' UPC (Universal product code)
 - DE 3055 code '113' US, UCC (Uniform Code Council)

Issue EDTI02 of 29 May 2002 –addition of recommended set of DTM qualifiers

Issue EDTI02 of 9 November 2001 : Addition of the UN/EDIFACT qualifiers related to License Plate included in the UN/EDIFACT D.01A Code list.

- Addition of the following code values:
 - SG23, GIN segment, DE 7405, codes 'VZ' = Transport unit identification according to ISO/IEC
15459 - Data Identifier 'J'
 - 'WA' = Indivisible transport unit according to ISO/IEC
15459 - Data Identifier '1J'
 - 'WB' = Divisible transport unit according to ISO/IEC 15459
Data Identifier '2J'
- The examples have been updated according the additional qualifiers for license plate.

24 November 1999 :

Addition of UN/ECE Recommendation No 21 qualifiers in SG18 GID C213/7065

BA = Barrel

CN = Container (*)

PE = Pallet (*)

RO = Roll

(*) EDIFICE code, not included in UN/ECE Recommendation No. 21

EDIFICE FUNCTIONAL DEFINITION

Introduction

A message from the party issuing an instruction regarding forwarding/transport services for a consignment under conditions agreed, to the party arranging the forwarding and/or transport services.

The message also caters for both the 'replace' and 'cancellation' functions by the use of the appropriate codes in the BGM segment.

A consignor or consignee may send an instruction.

An IFTMIN message covers one consignment, which may correspond to one or many Despatch Advice (DESADV) messages.

The IFTMIN message can be used in two ways:

1. To instruct a carrier/forwarder to carry out the transportation of a consignment. This is the normal usage of the IFTMIN message. In this case use qualifier '340' Shipping instructions, in the BGM segment.
2. To instruct a carrier/forwarder that goods items are being delivered to him and to provide instructions regarding the forwarding of this consignment. In this case use qualifier '610' Forwarding instructions, in the BGM segment.

Principles

- EDIFICE recommends that when there is a one-to-one relationship between a DESADV message and an IFTMIN message, the same document reference number i.e. the shipment number, should be identified in the BGM segment of both messages.
- When an IFTMIN message relates to more than one DESADV message, the IFTMIN message should refer to the respective despatch advices at line item level.
- Before an IFTMIN message is sent, the consignor may make a booking electronically or by other means, and consequently receive a shipping document number from the carrier/forwarder e.g. air waybill, house waybill or bill of lading. This document should then be referenced at header level, with the appropriate qualifier.
- It is assumed that there is a business or commercial agreement that defines all standard, basic trading terms and conditions agreed between the two parties.
To indicate the payment of freight charges, prepaid or collect, that could be done either in segment TCC of SG7 or in segment CPI of SG6.
The reason for including SG6 CPI segment is that in some countries the explicit use of segment CPI is required to carry the prepaid/collect indicator. If parties agree to use SG7, the SG6 could be excluded.
- Where the carrier/forwarder performs customs clearance on behalf of the shipper, information required for this purpose must be sent in SG31.
- Goods items in a consignment normally have one pick-up point and one delivery point. However, where this is not the case, it is recommended to uniquely identify the transport details for each pick-up point and delivery point.
- Goods items details are provided in SG18. This segment group may include details for each package in the consignment or for many packages. Where many packages are included, the weight and dimensions for each package must be identical.
- Goods items:
 - Several goods items may be in one consignment.
 - Goods items may be transported in containers.
 - A goods item may be transported in one or more containers, and a single container may contain one or more goods items.
 - One goods item may be related to one or more customs tariff codes.
 - Goods items related to one customs tariff code may be carried in one or more containers.

REFERENCES

Refer to the document : Reference list for the EDIFICE message guidelines – Issue 1

EXPLANATORY NOTES

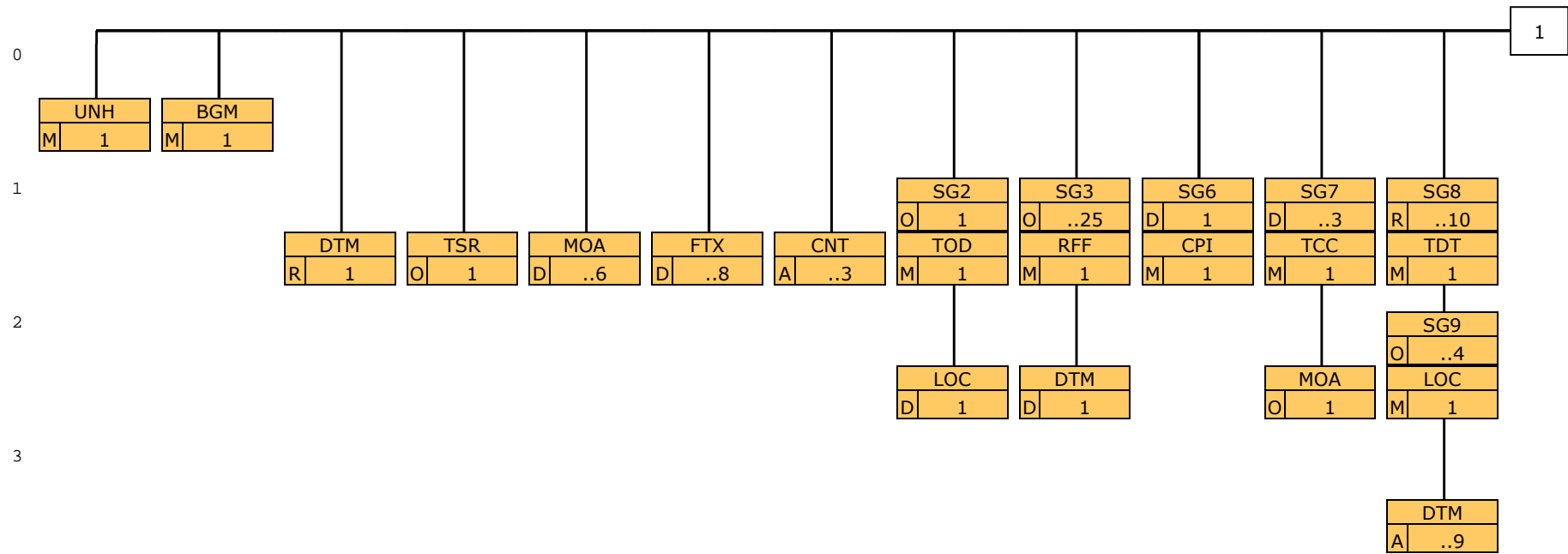
Refer to the document : Explanatory notes for the EDIFICE message guidelines – Issue 1

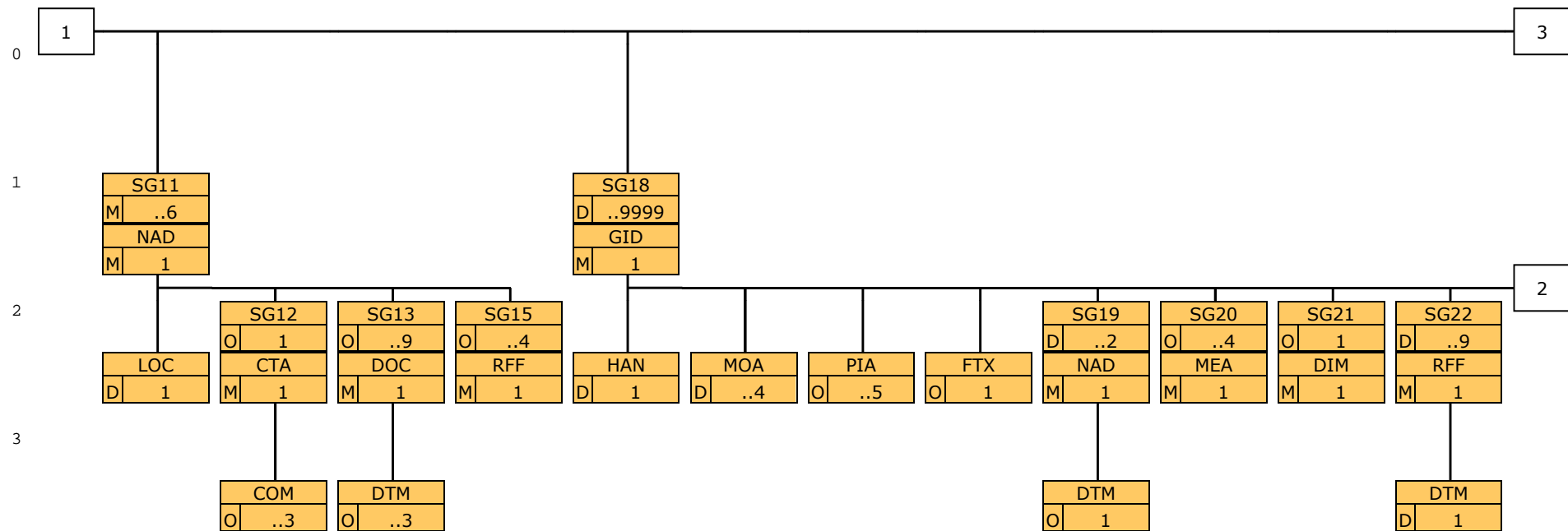
MESSAGE STRUCTURE CHART

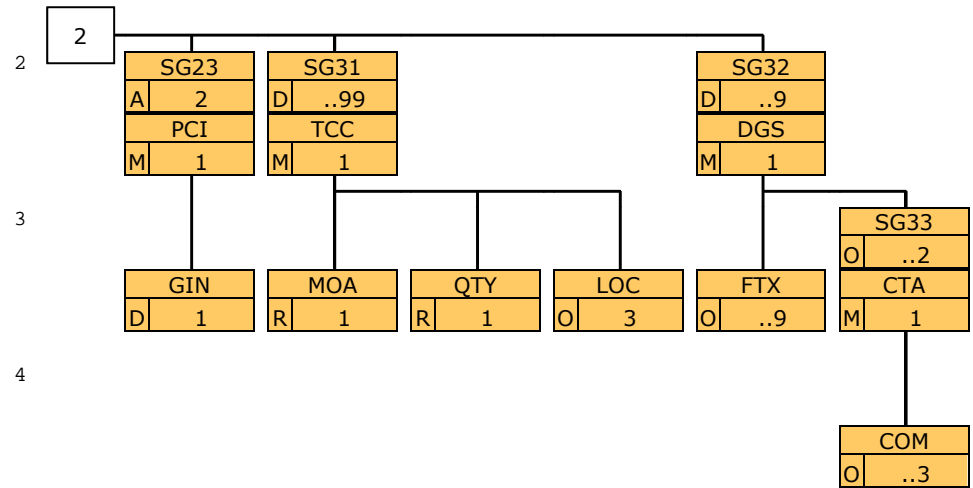
UNH	MESSAGE HEADER	M 1
BGM	BEGINNING OF MESSAGE	M 1
DTM	DATE/TIME/PERIOD	R 1
TSR	TRANSPORT SERVICE REQUIREMENTS	0 1
MOA	MONETARY AMOUNT	D..6
FTX	FREE TEXT	D..8
CNT	CONTROL TOTAL	A..3
SG2		0 1
TOD	TERMS OF DELIVERY OR TRANSPORT	M 1
LOC	PLACE/LOCATION IDENTIFICATION	D 1
SG3		O..25
RFF	REFERENCE	M 1
DTM	DATE/TIME/PERIOD	D 1
SG6		D 1
CPI	CHARGE PAYMENT INSTRUCTIONS	M 1
SG7		D..3
TCC	TRANSPORT CHARGE/RATE CALCULATIONS	M 1
MOA	MONETARY AMOUNT	O 1
SG8		R..10
TDT	DETAILS OF TRANSPORT	M 1
SG9		O..4
LOC	PLACE/LOCATION IDENTIFICATION	M 1
DTM	DATE/TIME/PERIOD	A..9
SG11		M..6
NAD	NAME AND ADDRESS	M 1
LOC	PLACE/LOCATION IDENTIFICATION	D 1
SG12		O 1
CTA	CONTACT INFORMATION	M 1
COM	COMMUNICATION CONTACT	O..3
SG13		O..9
DOC	DOCUMENT/MESSAGE DETAILS	M 1
DTM	DATE/TIME/PERIOD	O..3
SG15		O..4
RFF	REFERENCE	M 1
SG18		D..9999
GID	GOODS ITEM DETAILS	M 1
HAN	HANDLING INSTRUCTIONS	D 1
MOA	MONETARY AMOUNT	D..4
PIA	ADDITIONAL PRODUCT ID	O..5
FTX	FREE TEXT	O 1
SG19		D..2
NAD	NAME AND ADDRESS	M 1
DTM	DATE/TIME/PERIOD	O 1
SG20		O..4
MEA	MEASUREMENTS	M 1
SG21		O 1
DIM	DIMENSIONS	M 1
SG22		D..9
RFF	REFERENCE	M 1
DTM	DATE/TIME/PERIOD	D 1
SG23		A 2
PCI	PACKAGE IDENTIFICATION	M 1
GIN	GOODS IDENTITY NUMBER	D 1
SG31		D..99
TCC	TRANSPORT CHARGE/RATE CALCULATIONS	M 1
MOA	MONETARY AMOUNT	R 1
QTY	QUANTITY	R 1
LOC	PLACE/LOCATION IDENTIFICATION	O 3

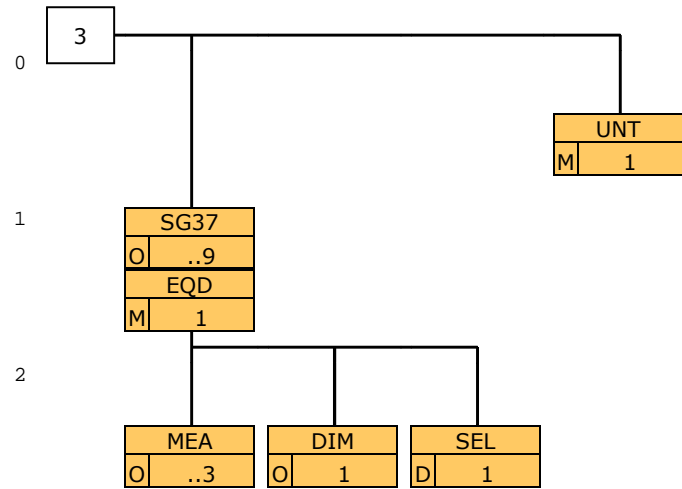
SG32		D..9
DGS	DANGEROUS GOODS	M1
FTX	FREE TEXT	O..9
SG33		O..2
CTA	CONTACT INFORMATION	M1
COM	COMMUNICATION CONTACT	O..3
SG37		O..9
EOD	EQUIPMENT DETAILS	M1
MEA	MEASUREMENTS	O..3
DIM	DIMENSIONS	O1
SEL	SEAL NUMBER	D1
UNT	MESSAGE TRAILER	M1

BRANCHING DIAGRAM









SEGMENT GROUPS/SEGMENTS DESCRIPTION

UNH MESSAGE HEADER

Function: A service segment heading, and uniquely identifying the message.
Usage: M1

BGM BEGINNING OF MESSAGE

Function: A segment uniquely identifying the message by means of its coded name, number and function.
Usage: M1

DTM DATE/TIME/PERIOD

Function: A segment specifying the date/time of creation of the message.
Usage: R 1

TSR TRANSPORT SERVICE REQUIREMENTS

Function: A segment specifying the contract and carriage condition, the loads requirement, and the transport priority for the entire consignment.
Usage: O 1

MOA MONETARY AMOUNT

Function: A segment specifying a monetary amount for the entire consignment.
Usage: D..6

FTX FREE TEXT

Function: A segment specifying supplementary information for the entire consignment.
Usage: D..8

CNT CONTROL TOTAL

Function: A segment specifying the weight, volume and quantity of the packages within the entire consignment.
Usage: A..3

SG2 TOD-LOC

Function: A group of segments specifying the terms of delivery for the whole message.
Usage: O 1
Notes: The LOC segment is only used if the terms of delivery ('F' & 'C') require a named location/place.

TOD TERMS OF DELIVERY OR TRANSPORT

Function: A segment specifying the terms of delivery for the entire consignment.
Usage: M1

LOC PLACE/LOCATION IDENTIFICATION

Function: A segment identifying a location or place required for the terms of delivery.
Usage: D 1

SG3 RFF-DTM

Function: A group of segments referencing documents and their dates/times, relating to the entire consignment.
Usage: O..25
Notes: Normally references are specified at the goods item level. Where the information refers to the entire consignment it must be in SG3. Where the information is not the same for every goods item it must appear in every SG22, and not here.
The DTM segment must be sent where local law requires the date of a reference document to be sent.

RFF REFERENCE

Function: A segment specifying a document reference number.

Usage: M1

DTM DATE/TIME/PERIOD

Function: A segment specifying the date/time of the reference document.

Usage: D 1

SG6 CPI

Function: A group of segments to indicate how the payment of freight charges should take place.

Usage: D 1

Notes: If there is a need to indicate how the payment of freight charges should take place, in some countries the explicit use of the CPI segment is required.
If CO C200 DE 4237 is used in the TCC segment of SG7, SG6 should not be used.

CPI CHARGE PAYMENT INSTRUCTIONS

Function: A segment indicating how the payment of freight charges should take place.

Usage: M1

SG7 TCC-MOA

Function: A group of segments specifying freight charges associated with the transport.

Usage: D..3

Notes: SG7 is only used when there is a need to specify the freight charges associated with the transport.

TCC TRANSPORT CHARGE/RATE CALCULATIONS

Function: A segment specifying a charge and its settlement.

Usage: M1

MOA MONETARY AMOUNT

Function: A segment specifying a monetary charge amount.

Usage: O 1

SG8 TDT-SG9

Function: A group of segments specifying transport details.

Usage: R..10

Notes: SG8 will be repeated for specifying the mode of transportation for successive stages e.g. road, air.

TDT DETAILS OF TRANSPORT

Function: A segment specifying the stage and mode of transport, the identification of the means of transport, and if necessary the carrier information.

Usage: M1

SG9 LOC-DTM

Function: A group of segments specifying locations and dates/times related to the stage of transport.

Usage: O..4

Notes:

LOC PLACE/LOCATION IDENTIFICATION

Function: A segment identifying the location.

Usage: M1

DTM DATE/TIME/PERIOD

Function: A segment specifying a date/time for the specified location.

Usage: A..9

SG11 NAD-LOC-SG12-SG13-SG15

Function: A group of segments identifying the parties involved and their associated information, relevant to the whole message.
Usage: M..6
Notes: As a minimum NAD segments identifying the consignor (CZ) and the consignee (CN) must be present. If the goods items specified in SG18 (GID segment) have different delivery addresses, the relevant addresses need to be specified in the NAD segment in SG19 and not here.

The LOC segment is only to be used if more details regarding specific places and locations of the party specified in NAD are required, e.g. site, gate, building or dock number.

NAD NAME AND ADDRESS

Function: A segment identifying the function and coded identification, name and address of a party involved.
Usage: M1

LOC PLACE/LOCATION IDENTIFICATION

Function: A segment specifying a location or place relevant to the specified party.
Usage: D 1

SG12 CTA-COM

Function: A group of segments giving contact details of the specific person or department within the identified party involved, to whom communication should be directed.
Usage: O 1
Notes:

CTA CONTACT INFORMATION

Function: A segment identifying a person or department, and their function.
Usage: M1

COM COMMUNICATION CONTACT

Function: A segment identifying a communications type and number.
Usage: O..3

SG13 DOC-DTM

Function: A group of segments identifying documents, and their dates, required by an identified party.
Usage: O..9
Notes:

DOC DOCUMENT/MESSAGE DETAILS

Function: A segment identifying a required document.
Usage: M1

DTM DATE/TIME/PERIOD

Function: A segment specifying the date/time of the identified document.
Usage: O..3

SG15 RFF

Function: A group of segments giving references relating to the identified party.
Usage: O..4
Notes:

RFF REFERENCE

Function: A segment specifying a company specific reference.
Usage: M1

SG18 GID-HAN-MOA-PIA-FTX-SG19-SG20-SG21-SG22-SG23-SG31-SG32

Function: A group of segments providing details of goods items i.e. shippable units/packages and its material content.
Usage: D..9999
Notes: SG18 is dependent on the message function stated in the BGM segment.
When an original message or a replace is sent, this group of segments is required, but when a cancellation is sent, it is not required.
The HAN segment is always used when the package contains hazardous materials, and in other cases as appropriate.
The MOA segment is used if required by the consignee to undertake customs clearance procedures.
SG19 is used when goods items have different pick-up and/or delivery addresses.
Normally references are specified at the goods item level, SG22. Where the information refers to the entire consignment it must be in SG3.
SG31 is used to give information to a Forwarder/Agent, when making a customs declaration on behalf of the Exporter/Consignor.
SG32 must be sent when at least one of the goods items is classified as dangerous goods.
At present the maximum occurrence of this segment group is 999. EDIFICE has raised a DMR to increase the number of occurrences to 9999.

At present the maximum occurrence of SG18 is 99. EDIFICE has raised a DMR to increase the number of occurrences to 9999.

GID GOODS ITEM DETAILS

Function: A segment describing the number and package type for the goods item.
The segment also carries a sequence number assigned to the goods item within the message.
Usage: M1

HAN HANDLING INSTRUCTIONS

Function: A segment specifying package handling and giving notification of hazardous material for the goods item.
Usage: D 1

MOA MONETARY AMOUNT

Function: A segment specifying a monetary amount associated with the goods item.
Usage: D..4

PIA ADDITIONAL PRODUCT ID

Function: A segment providing additional identification numbers for the goods item.
Usage: O..5

FTX FREE TEXT

Function: A segment providing a high level description of the material, contained within the shippable unit/package.
Usage: O 1

SG19 NAD-DTM

Function: A group of segments identifying different despatch and/or delivery parties and their associated information, and related dates/times for the goods item.
Usage: D..2
Notes: If the goods items specified in SG18 (GID segment) have the same delivery address, this address should be specified in the NAD segment in SG11 and not here.

NAD NAME AND ADDRESS

Function: A segment identifying the coded identification, name and address of a despatch and/or delivery party.
Usage: M1

DTM DATE/TIME/PERIOD

Function: A segment specifying a date/time relating to the identified party.
Usage: O 1

SG20 MEA

Function: A group of segments specifying measurements, other than dimensions, applicable to a goods item.

Usage: O..4
Notes:

MEA MEASUREMENTS

Function: A segment specifying a measurement.
Usage: M1

SG21 DIM

Function: A group of segments specifying dimensions applicable to a goods item or part of a goods item.
Usage: O1
Notes:

DIM DIMENSIONS

Function: A segment specifying the dimensions.
Usage: M1

SG22 RFF-DTM

Function: A group of segments specifying identity numbers and referencing documents and their dates/times, associated with the goods item.
Usage: D..9
Notes: The DTM segment must be sent where local law requires the date of a reference document to be sent.

RFF REFERENCE

Function: A segment specifying an identity number or a document reference number.
Usage: M1

DTM DATE/TIME/PERIOD

Function: A segment indicating the date/time of the reference document.
Usage: D1

SG23 PCI-GIN

Function: A group of segments specifying packaging identification numbers and shipping marks.
Usage: A2
Notes: When this information is barcoded, it must be preceded by the appropriate data identifiers. However, if the same shipping marks are valid for all goods items, the shipping marks can be inserted at header level, in the FTX segment, using qualifier 'PAC'.

PCI PACKAGE IDENTIFICATION

Function: A segment specifying packaging identification numbers or shipping marks for the goods item.
Usage: M1

GIN GOODS IDENTITY NUMBER

Function: A segment specifying the licence plate number.
Usage: D1

SG31 TCC-MOA-QTY-LOC

Function: A group of segments specifying information for customs reporting as to the goods items.
Usage: D..99
Notes:

TCC TRANSPORT CHARGE/RATE CALCULATIONS

Function: A segment specifying the Harmonized system number and related rate details.
Usage: M1

MOA MONETARY AMOUNT

Function: A segment specifying the Customs value for a Harmonized system number.
Usage: R 1

QTY QUANTITY

Function: A segment specifying the delivery quantity for a Harmonized system number.
Usage: R 1

LOC PLACE/LOCATION IDENTIFICATION

Function: A segment indicating a location where customs clearance should take place, and the country of origin of the goods.
Usage: O 3

SG32 DGS-FTX-SG33

Function: A group of segments specifying dangerous goods details related to the goods items.
Usage: D..9
Notes: Segment DGS indicates the class of dangerous goods, packing group, etc.

DGS DANGEROUS GOODS

Function: A segment specifying dangerous goods regulatory and identification information related to the goods items.
Usage: M 1

FTX FREE TEXT

Function: A segment specifying additional dangerous goods information
Usage: O..9

SG33 CTA-COM

Function: A group of segments identifying the people, functions, departments and appropriate numbers to whom communications regarding dangerous goods should be directed.
Usage: O..2
Notes:

CTA CONTACT INFORMATION

Function: A segment identifying a person or department, and their function.
Usage: M 1

COM COMMUNICATION CONTACT

Function: A segment identifying a communications type and number.
Usage: O..3

SG37 EQD-MEA-DIM-SEL

Function: A group of segments specifying information relative to the material handling equipment used for the transportation of goods.
Usage: O..9
Notes: The SEL segment is used if a seal has been placed on the equipment.

EQD EQUIPMENT DETAILS

Function: A segment identifying a unit of equipment.
Usage: M 1

MEA MEASUREMENTS

Function: A segment specifying a measurement, other than dimensions, associated with the identified unit of equipment.
Usage: O..3

DIM DIMENSIONS

Function: A segment specifying gross dimensions, associated with the identified unit of equipment.
Usage: O1

SEL SEAL NUMBER

Function: A segment specifying a seal number and party responsible,for the identified unit of equipment.
Usage: D1

UNT MESSAGE TRAILER

Function: A service segment ending, and providing information for checking the completeness of a message.
Usage: M1

SEGMENT DETAILS



UNH MESSAGE HEADER

Function: A service segment heading, and uniquely identifying the message.

Usage : M1

Notes : Refer to EDIFICE Utilisation of the UN/EDIFACT Service Segments, Issue EDSS04

Ref.	Rep.	Name		EDIFICE Utilisation
0062	an..14	M MESSAGE REFERENCE NUMBER	M	Transmission message count from 1
S009		M MESSAGE IDENTIFIER	M	
0065	an..6	M Message type identifier	M	IFTMIN = Instruction message
0052	an..3	M Message type version number	M	D = Draft version/UN/EDIFACT Directory
0054	an..3	M Message type release number	M	97A = Release 1997 - A
0051	an..2	M Controlling agency	M	UN = UN/CEFACT
0057	an..6	C Association assigned code	R	EDTI02 = International Forward & Transport message, Instruction Issue EDTI02
0068	an..35	C COMMON ACCESS REFERENCE	N	
S010		C STATUS OF THE TRANSFER	N	
0070	n..2	M Sequence message transfer number	N	
0073	a1	C First/last sequence message transfer indication	N	

BGM BEGINNING OF MESSAGE

Function: A segment uniquely identifying the message by means of its coded name, number and function.

Usage : M1

Notes : Cancellation:

When DE 1225 contains '1' then only the BGM, DTM, SG8 TDT and SG11 NAD segments need be sent in the message.

The document number used in DE 1004 must be the same as in the original message.

Replace:

When DE 1225 contains '5' it has the effect of cancelling the original message and replacing it with this, so the complete message must be sent. The document number used in DE 1004 must be the same as in the original message.

Ref.	Rep.	Name		EDIFICE Utilisation
C002		C DOCUMENT/MESSAGE NAME	R	340 = Shipping instructions 610 = Forwarding instructions In case the instructions deals with a shipment covered by one Despatch Advice, the recommendation is that the shipment number to be used to uniquely identify the international forward & transport instruction. The shipment number is a unique number, created by the supplying company, which will be used to identify the shipment from the supplier through to the receiving location's receipt validation step.
1001	an..3	C Document/message name, coded	R	
1131	an..3	C Code list qualifier	N	
3055	an..3	C Code list responsible agency, coded	N	
1000	an..35	C Document/message name	N	
C106		C DOCUMENT/MESSAGE IDENTIFICATION	R	
1004	an..35	C Document/message number	R	
1056	an..9	C Version	N	
1060	an..6	C Revision number	N	
1225	an..3	C MESSAGE FUNCTION, CODED	R	
				1 = Cancellation 5 = Replace 9 = Original
4343	an..3	C RESPONSE TYPE, CODED	N	

DTM DATE/TIME/PERIOD

Function: A segment specifying the date/time of creation of the message.
 Usage : R 1
 Notes : All dates and times are local.

Ref.	Rep.	Name	EDIFICE Utilisation
C507		M DATE/TIME/PERIOD	M
2005	an..3	M Date/time/period qualifier	M
2380	an..35	C Date/time/period	R
2379	an..3	C Date/time/period format qualifier	R
			137 = Document/message date/time Date when the document is created 102 = CCYYMMDD 203 = CCYYMMDDHHMM 303 = CCYYMMDDHHMMZZZ ZZZ = Time zone 304 = CCYYMMDDHHMMSSZZZ ZZZ = Time zone X03 = CCYYMMDDHHMMZZZZZ (*) ZZZZ = Time zone X04 = CCYYMMDDHHMMSSZZZZZ (*) ZZZZZ = Time zone (*) EDIFICE code

TSR TRANSPORT SERVICE REQUIREMENTS

Function: A segment specifying the contract and carriage condition, the loads requirement, and the transport priority for the entire consignment.

Usage : 01

Notes :

Ref.	Rep.	Name		EDIFICE Utilisation
C536		C CONTRACT AND CARRIAGE CONDITION	R	
4065	an..3	M Contract and carriage condition, coded	M	2 = Special agreement for parcels transport 3 = Special agreement for full loading transport 5 = FIATA combined transport bill of lading 7 = Normal tariff, parcels transport 8 = Normal tariff, full loading transport 10 = Port to port 11 = CMR carnet 12 = Special tariff, parcels transport 13 = Special tariff, full transport 27 = Door-to-door DTP = Door to port (*) PTD = Port to door (*) (*) EDIFICE code
1131	an..3	C Code list qualifier	N	
3055	an..3	C Code list responsible agency, coded	N	
C233		C SERVICE	O	
7273	an..3	M Service requirement, coded	M	1 = Carrier loads 2 = Full loads 3 = Less than full loads 4 = Shipper loads
1131	an..3	C Code list qualifier	N	
3055	an..3	C Code list responsible agency, coded	N	
7273	an..3	C Service requirement, coded	N	
1131	an..3	C Code list qualifier	N	
3055	an..3	C Code list responsible agency, coded	N	
C537		C TRANSPORT PRIORITY	O	
4219	an..3	M Transport priority, coded	M	1 = Express 2 = High speed 3 = Normal speed 4 = Post service
1131	an..3	C Code list qualifier	N	
3055	an..3	C Code list responsible agency, coded	N	
C703		C NATURE OF CARGO	N	
7085	an..3	M Nature of cargo, coded	N	
1131	an..3	C Code list qualifier	N	
3055	an..3	C Code list responsible agency, coded	N	

MOA MONETARY AMOUNT

Function: A segment specifying a monetary amount for the entire consignment.

Usage : D..6

Notes : The MOA segment must be sent if a service requiring a monetary amount to be specified, has to be rendered.

Ref.	Rep.	Name		EDIFICE Utilisation
C516		M MONETARY AMOUNT	M	
5025	an..3	M Monetary amount type qualifier	M	22 = Cash on delivery amount 39 = Invoice total amount 43 = Declared total Customs value 44 = Declared value for carriage 131 = Total/charges/allowances 157 = Insurance value
5004	n..18	C Monetary amount	R	
6345	an..3	C Currency, coded	R	Use ISO 4217, 3 alpha code
6343	an..3	C Currency qualifier	O	1 = Customs valuation currency 4 = Invoicing currency
4405	an..3	C Status, coded	N	

FTX FREE TEXT

Function: A segment specifying supplementary information for the entire consignment.

Usage : D..8

Notes : If shipping marks are identical for all packages in a Transport instruction message, they can be transmitted in this segment, using code 'PAC' in DE 4451, rather than being transmitted for each package in SG23 segment PCI.

Ref.	Rep.	Name		EDIFICE Utilisation
4451	an..3	M TEXT SUBJECT QUALIFIER	M	AAI = General information BLR = Transport document remarks CUR = Customer remarks DEL = Delivery information DIN = Delivery instructions HAN = Handling instructions ICN = Information for consignee Remarks to be printed on transport documents. MKS = Additional marks/numbers information PAC = Packing/marketing information SIC = Sender's instruction to carrier SIN = Special instructions
4453	an..3	C TEXT FUNCTION, CODED	O	1 = Text for subsequent use 2 = Text replacing missing code Used if no specific text qualifier is available 3 = Text for immediate use Text must be read before actioning the message
C107		C TEXT REFERENCE	N	
4441	an..17	M Free text identification	N	
1131	an..3	C Code list qualifier	N	
3055	an..3	C Code list responsible agency, coded	N	
C108		C TEXT LITERAL	R	
4440	an..70	M Free text	M	
4440	an..70	C Free text	O	
4440	an..70	C Free text	O	
4440	an..70	C Free text	O	
4440	an..70	C Free text	O	
3453	an..3	C LANGUAGE, CODED	N	

CNT CONTROL TOTAL

Function: A segment specifying the weight, volume and quantity of the packages within the entire consignment.

Usage : A ..3

Notes :

Ref.	Rep.	Name		EDIFICE Utilisation
C270		M CONTROL	M	
6069	an..3	M Control qualifier	M	7 = Total gross weight 11 = Total number of packages 15 = Total consignment, cube Total volume
6066	n..18	M Control value	M	
6411	an..3	C Measure unit qualifier	R	Use the following codes from UN/ECE Recommendation no.20, Codes for Units of Measurement: CMQ = cubic centimetre FTQ = cubic foot INQ = inch cubed KGM = kilogram LBR = pound MTQ = cubic metre PCE = piece (*) (*) EDIFICE code, not included in UN/ECE Recommendation No. 20

SG2 TOD-LOC

TOD TERMS OF DELIVERY OR TRANSPORT

Function: A segment specifying the terms of delivery for the entire consignment.

Usage : M1

Notes :

Ref.	Rep.	Name		EDIFICE Utilisation
4055	an..3	C TERMS OF DELIVERY OR TRANSPORT FUNCTION, CODED	A	6 = Delivery condition
4215	an..3	C TRANSPORT CHARGES METHOD OF PAYMENT, CODED	N	
C100		C TERMS OF DELIVERY OR TRANSPORT	R	
4053	an..3	C Terms of delivery or transport, coded	R	Use UN/ECE Recommendation no.5, Incoterms 1990 (see next table). Incoterms code list: Group E - Departure EXW = Ex works Group F - Main carriage unpaid FAS = Free alongside ship FCA = Free carrier FOB = Free on Board Group C - Main carriage paid CFR = Cost and freight CIF = Cost, insurance and freight CIP = Carriage and insurance paid to CPT = Carriage paid to Group D - Arrival DAF = Delivered at frontier DDP = Delivered duty paid DDU = Delivered duty unpaid DEQ = Delivered ex quay DES = Delivered ex ship If not applicable, use code from another appropriate code set in DE 4053 in combination with DE 1131/3055.
1131	an..3	C Code list qualifier	D	
3055	an..3	C Code list responsible agency, coded	D	
4052	an..70	C Terms of delivery or transport	N	
4052	an..70	C Terms of delivery or transport	N	

SG2 TOD-LOC

LOC PLACE/LOCATION IDENTIFICATION

Function: A segment identifying a location or place required for the terms of delivery.

Usage : D 1

Notes :

Ref.	Rep.	Name		EDIFICE Utilisation
3227	an..3	M PLACE/LOCATION QUALIFIER	M	1 = Place of terms of delivery Use UN/ECE Recommendation no.16, UNLOCODE. If not applicable, use codes from another appropriate code set in combination with DE 1131/3055. Examples of codes are: 3 = IATA (International Air Transport Association) 91 = Assigned by seller or seller's agent 92 = Assigned by buyer or buyer's agent
C517		C LOCATION IDENTIFICATION	R	
3225	an..25	C Place/location identification	R	
1131	an..3	C Code list qualifier	D	
3055	an..3	C Code list responsible agency, coded	D	
3224	an..70	C Place/location	O	
C519		C RELATED LOCATION ONE IDENTIFICATION	N	
3223	an..25	C Related place/location one identification	N	
1131	an..3	C Code list qualifier	N	
3055	an..3	C Code list responsible agency, coded	N	
3222	an..70	C Related place/location one	N	
C553		C RELATED LOCATION TWO IDENTIFICATION	N	
3233	an..25	C Related place/location two identification	N	
1131	an..3	C Code list qualifier	N	
3055	an..3	C Code list responsible agency, coded	N	
3232	an..70	C Related place/location two	N	
5479	an..3	C RELATION, CODED	N	

SG3 RFF-DTM

RFF REFERENCE

Function: A segment specifying a document reference number.

Usage : M1

Notes :

Ref.	Rep.	Name		EDIFICE Utilisation
C506		M REFERENCE	M	
1153	an..3	M Reference qualifier	M	AAC = Documentary credit number AAD = Contract addendum number AAK = Despatch advice number AAM = Waybill number AAN = Delivery schedule number ACW = Reference number to previous message AFN = Account party's reference AWB = Air waybill number BM = Bill of lading number BN = Booking reference number CMR = Road consignment note number CO = Buyers order number Customer order number CN = Carrier's reference number CT = Contract number ED = Export declaration EX = Export license number FF = Freight forwarder's reference number GN = Government reference number HWB = House waybill number IP = Import license number IV = Invoice number LC = Letter of credit number MB = Master bill of lading MWB = Master air waybill number ON = Order number (purchase) PK = Packing list number PQ = Payment reference SI = SID (Shipper's identifying number for shipment) SRN = Shipment reference number UCN = Unique consignment reference number VN = Order number (vendor)
1154	an..35	C Reference number	R	
1156	an..6	C Line number	O	
4000	an..35	C Reference version number	N	

SG3 RFF-DTM

DTM DATE/TIME/PERIOD

Function: A segment specifying the date/time of the reference document.

Usage : D1

Notes : All dates and times are local.

Ref.	Rep.	Name		EDIFICE Utilisation
C507		M DATE/TIME/PERIOD	M	
2005	an..3	M Date/time/period qualifier	M	171 = Reference date/time
2380	an..35	C Date/time/period	R	
2379	an..3	C Date/time/period format qualifier	R	102 = CCYYMMDD 203 = CCYYMMDDHHMM 303 = CCYYMMDDHHMMZZZ ZZZ = Time zone 304 = CCYYMMDDHHMMSSZZZ ZZZ = Time zone X03 = CCYYMMDDHHMMZZZZZ (*) ZZZZZ = Time zone X04 = CCYYMMDDHHMMSSZZZZZ (*) ZZZZZ = Time zone (*) EDIFICE code

SG6 CPI**CPI CHARGE PAYMENT INSTRUCTIONS**

Function: A segment indicating how the payment of freight charges should take place.

Usage : M1

Notes : If this segment is used to indicate how the payment of freight charges should take place, CO C200 DE 4237 in SG7 segment TCC should not be used.

Ref.	Rep.	Name		EDIFICE Utilisation
C229		C CHARGE CATEGORY	N	
5237	an..3	M Charge category, coded	N	
1131	an..3	C Code list qualifier	N	
3055	an..3	C Code list responsible agency, coded	N	
C231		C METHOD OF PAYMENT	N	
4215	an..3	M Transport charges method of payment, coded	N	
1131	an..3	C Code list qualifier	N	
3055	an..3	C Code list responsible agency, coded	N	
4237	an..3	C PREPAID/COLLECT INDICATOR, CODED	R	B = Third party to pay A third party to pay the freight bill is known at the time of shipment. C = Collect P = Prepaid

SG7 TCC-MOA

TCC TRANSPORT CHARGE/RATE CALCULATIONS

Function: A segment specifying a charge and its settlement.

Usage : M1

Notes :

Ref.	Rep.	Name		EDIFICE Utilisation
C200		C CHARGE	R	
8023	an..17	C Freight and charges identification	R	Use UN/ECE Recommendation No. 23 : Examples of codes :
1131	an..3	C Code list qualifier	N	
3055	an..3	C Code list responsible agency, coded	N	
8022	an..26	C Freight and charges	N	
4237	an..3	C Prepaid/collect indicator, coded	D	B = Third party to pay A third party to pay the freight bill is known at the time of shipment. C = Collect P = Prepaid
7140	an..35	C Item number	N	
C203		C RATE/TARIFF CLASS	N	
5243	an..9	M Rate/tariff class identification	N	
1131	an..3	C Code list qualifier	N	
3055	an..3	C Code list responsible agency, coded	N	
5242	an..35	C Rate/tariff class	N	
5275	an..6	C Supplementary rate/tariff basis identification	N	
1131	an..3	C Code list qualifier	N	
3055	an..3	C Code list responsible agency, coded	N	
5275	an..6	C Supplementary rate/tariff basis identification	N	
1131	an..3	C Code list qualifier	N	
3055	an..3	C Code list responsible agency, coded	N	
C528		C COMMODITY/RATE DETAIL	N	
7357	an..18	C Commodity/rate identification	N	
1131	an..3	C Code list qualifier	N	
3055	an..3	C Code list responsible agency, coded	N	
C554		C RATE/TARIFF CLASS DETAIL	N	
5243	an..9	C Rate/tariff class identification	N	
1131	an..3	C Code list qualifier	N	
3055	an..3	C Code list responsible agency, coded	N	

SG7 TCC-MOA**MOA MONETARY AMOUNT**

Function: A segment specifying a monetary charge amount.

Usage : 01

Notes :

Ref.	Rep.	Name		EDIFICE Utilisation
C516		M MONETARY AMOUNT	M	
5025	an..3	M Monetary amount type qualifier	M	22 = Cash on delivery amount 23 = Charge amount
5004	n..18	C Monetary amount	R	
6345	an..3	C Currency, coded	R	Use ISO 4217, 3 alpha code
6343	an..3	C Currency qualifier	N	
4405	an..3	C Status, coded	N	

SG8 TDT-SG9

TDT DETAILS OF TRANSPORT

Function: A segment specifying the stage and mode of transport, the identification of the means of transport, and if necessary the carrier information.

Usage : M1

Notes : DE 8028 may be used to reference a current transport stage as identified in DE 8051, if this information is already known e.g. flight number.

Identification such as vehicle licence plate number may be provided in CO C222 DE 8212.

Ref.	Rep.	Name		EDIFICE Utilisation
8051	an..3	M TRANSPORT STAGE QUALIFIER	M	10 = Pre-carriage transport 20 = Main-carriage transport 30 = On-carriage transport
8028	an..17	C CONVEYANCE REFERENCE NUMBER	A	Used for Flight or Voyage No.
C220		C MODE OF TRANSPORT	R	
8067	an..3	C Mode of transport, coded	R	The following codes are taken from the UN/ECE Recommendation No 19. 1 = Maritime transport 2 = Rail transport 3 = Road transport 4 = Air transport 6 = Multimodal transport
8066	an..17	C Mode of transport	N	
C228		C TRANSPORT MEANS	N	
8179	an..8	C Type of means of transport identification	N	
8178	an..17	C Type of means of transport	N	
C040		C CARRIER	A	
3127	an..17	C Carrier identification	A	Mutually defined code
1131	an..3	C Code list qualifier	N	
3055	an..3	C Code list responsible agency, coded	A	3 = IATA (International Air Transport Association) 9 = EAN (International Article Numbering association) 11 = Lloyd's register of shipping 16 = DUNS (Dun & Bradstreet) 91 = Assigned by seller or seller's agent 92 = Assigned by buyer or buyer's agent 166 = US, National Motor Freight Classification Association
3128	an..35	C Carrier name	D	Used if no coded name is exchanged.
8101	an..3	C TRANSIT DIRECTION, CODED	N	
C401		C EXCESS TRANSPORTATION INFORMATION	N	
8457	an..3	M Excess transportation reason, coded	N	
8459	an..3	M Excess transportation responsibility, coded	N	
7130	an..17	C Customer authorization number	N	
C222		C TRANSPORT IDENTIFICATION	A	
8213	an..9	C Id. of means of transport identification	N	
1131	an..3	C Code list qualifier	N	
3055	an..3	C Code list responsible agency, coded	N	
8212	an..35	C Id. of the means of transport	A	Vessel name or vehicle license number
8453	an..3	C Nationality of means of transport, coded	O	Use ISO 3166, 2 alpha code
8281	an..3	C TRANSPORT OWNERSHIP, CODED	N	

SG9 LOC-DTM

LOC PLACE/LOCATION IDENTIFICATION

Function: A segment identifying the location.

Usage : M1

Notes :

Ref.	Rep.	Name		EDIFICE Utilisation
3227	an..3	M PLACE/LOCATION QUALIFIER	M	5 = Place of departure 7 = Place of delivery 8 = Place of destination 9 = Place/port of loading 11 = Place/port of discharge 13 = Place of transshipment 15 = Place of transfer responsibility 19 = Factory/plant 24 = Port of entry 28 = Country of destination of goods Destination country 50 = Customs office of transit 60 = Place of arrival 83 = Place of delivery (by on carriage)
C517		C LOCATION IDENTIFICATION	R	
3225	an..25	C Place/location identification	R	Use UN/ECE Recommendation no.16, UNLOCODE. If not applicable, use codes from another appropriate code set in combination with DE 1131/3055.
1131	an..3	C Code list qualifier	D	
3055	an..3	C Code list responsible agency, coded	D	Examples of codes are: 3 = IATA (International Air Transport Association) 91 = Assigned by seller or seller's agent 92 = Assigned by buyer or buyer's agent
3224	an..70	C Place/location	O	
C519		C RELATED LOCATION ONE IDENTIFICATION	N	
3223	an..25	C Related place/location one identification	N	
1131	an..3	C Code list qualifier	N	
3055	an..3	C Code list responsible agency, coded	N	
3222	an..70	C Related place/location one	N	
C553		C RELATED LOCATION TWO IDENTIFICATION	N	
3233	an..25	C Related place/location two identification	N	
1131	an..3	C Code list qualifier	N	
3055	an..3	C Code list responsible agency, coded	N	
3232	an..70	C Related place/location two	N	
5479	an..3	C RELATION, CODED	N	

SG9 LOC-DTM**DTM DATE/TIME/PERIOD**

Function: A segment specifying a date/time for the specified location.

Usage : A..9

Notes : All dates and times are local.

Ref.	Rep.	Name		EDIFICE Utilisation
C507	M	DATE/TIME/PERIOD	M	
2005 an..3	M	Date/time/period qualifier	M	2 = Delivery date/time, requested 10 = Shipment date/time, requested 17 = Delivery date/time, estimated Date/time when carrier estimates when a means of transport should arrive at port of discharge or place of destination. 63 = Delivery date/time, latest 64 = Delivery date/time, earliest 69 = Delivery date/time, promised for 128 = Delivery date/time, last Latest delivery date 132 = Arrival date/time, estimated 133 = Departure date/time, estimated Date/time when a carrier estimates that a means of transport should depart at the place of departure. 189 = Departure date/time, scheduled 190 = Transhipment date/time 191 = Delivery date/time, expected 200 = Pick-up/collection date/time of cargo Used by the seller to indicate to the forwarder when the goods can be collected from the seller's premises. 234 = Collection date/time, earliest 235 = Collection date/time, latest
2380 an..35	C	Date/time/period	R	
2379 an..3	C	Date/time/period format qualifier	R	102 = CCYYMMDD 203 = CCYYMMDDHHMM 303 = CCYYMMDDHHMMZZZ ZZZ = Time zone 304 = CCYYMMDDHHMMSSZZZ ZZZ = Time zone X03 = CCYYMMDDHHMMZZZZZ (*) ZZZZZ = Time zone X04 = CCYYMMDDHHMMSSZZZZZ (*) ZZZZZ = Time zone (*) EDIFICE code

SG11 NAD-LOC-SG12-SG13-SG15

NAD NAME AND ADDRESS

Function: A segment identifying the function and coded identification, name and address of a party involved.

Usage : M1

Notes : It is advised that the party identification CO C082 be used. When CO C082 cannot be used it is recommended to use the structured name and address CO C080 through DE 3207 rather than the unstructured one CO C058.

Ref.	Rep.	Name		EDIFICE Utilisation
3035	an..3	M PARTY QUALIFIER	M	AA = Party to be billed (AAR Accounting rule 11) AG = Agent/representative AK = Acknowledgement recipient BS = Bill and ship to BY = Buyer CM = Customs CN = Consignee CZ = Consignor DP = Delivery party This is the 'ship to' address. FP = Freight/charges payer FW = Freight forwarder IB = Intermediary/broker NI = Notify party PW = Despatch party Where the goods are collected from, if not identical with consignor. SE = Seller SF = Ship from
C082		C PARTY IDENTIFICATION DETAILS	A	
3039	an..35	M Party id. identification	M	
1131	an..3	C Code list qualifier	N	
3055	an..3	C Code list responsible agency, coded	R	9 = EAN (International Article Numbering association) 16 = DUNS (Dun & Bradstreet) 91 = Assigned by seller or seller's agent 92 = Assigned by buyer or buyer's agent
C058		C NAME AND ADDRESS	D	
3124	an..35	M Name and address line	M	
3124	an..35	C Name and address line	O	
3124	an..35	C Name and address line	O	
3124	an..35	C Name and address line	O	
3124	an..35	C Name and address line	O	
C080		C PARTY NAME	D	
3036	an..35	M Party name	M	
3036	an..35	C Party name	O	
3036	an..35	C Party name	O	
3036	an..35	C Party name	O	
3036	an..35	C Party name	O	
3045	an..3	C Party name format, coded	N	
C059		C STREET	D	
3042	an..35	M Street and number/p.o. box	M	
3042	an..35	C Street and number/p.o. box	O	
3042	an..35	C Street and number/p.o. box	O	
3042	an..35	C Street and number/p.o. box	O	
3164	an..35	C CITY NAME	D	
3229	an..9	C COUNTRY SUB-ENTITY IDENTIFICATION	D	
3251	an..9	C POSTCODE IDENTIFICATION	D	
3207	an..3	C COUNTRY, CODED	D	Use ISO 3166, 2 alpha code

SG11 NAD-LOC-SG12-SG13-SG15

LOC PLACE/LOCATION IDENTIFICATION

Function: A segment specifying a location or place relevant to the specified party.

Usage : D 1

Notes :

Ref.	Rep.	Name		EDIFICE Utilisation
3227	an..3	M PLACE/LOCATION QUALIFIER	M	5 = Place of departure 7 = Place of delivery 10 = Place of acceptance Goods taken over by the carrier
C517		C LOCATION IDENTIFICATION	R	
3225	an..25	C Place/location identification	N	
1131	an..3	C Code list qualifier	N	
3055	an..3	C Code list responsible agency, coded	N	
3224	an..70	C Place/location	R	
C519		C RELATED LOCATION ONE IDENTIFICATION	N	
3223	an..25	C Related place/location one identification	N	
1131	an..3	C Code list qualifier	N	
3055	an..3	C Code list responsible agency, coded	N	
3222	an..70	C Related place/location one	N	
C553		C RELATED LOCATION TWO IDENTIFICATION	N	
3233	an..25	C Related place/location two identification	N	
1131	an..3	C Code list qualifier	N	
3055	an..3	C Code list responsible agency, coded	N	
3232	an..70	C Related place/location two	N	
5479	an..3	C RELATION, CODED	N	

SG12 CTA-COM**CTA CONTACT INFORMATION**

Function: A segment identifying a person or department, and their function.

Usage : M1

Notes :

Ref.	Rep.	Name	EDIFICE Utilisation	
3139	an..3	C CONTACT FUNCTION, CODED	R	IC = Information contact If a code is available use DE 3413, otherwise use DE 3412.
C056		C DEPARTMENT OR EMPLOYEE DETAILS	R	
3413	an..17	C Department or employee identification	D	
3412	an..35	C Department or employee	D	

SG12 CTA-COM

COM COMMUNICATION CONTACT

Function: A segment identifying a communications type and number.

Usage : 0..3

Notes :

Ref.	Rep.	Name		EDIFICE Utilisation
C076		M COMMUNICATION CONTACT	M	
3148	an..512	M Communication number	M	
3155	an..3	M Communication channel qualifier	M	EM = Electronic mail FX = Telefax TE = Telephone

SG13 DOC-DTM

DOC DOCUMENT/MESSAGE DETAILS

Function: A segment identifying a required document.

Usage : M1

Notes : When a document has a unique number, that number should be inserted in CO C503 DE 1004.

Ref.	Rep.	Name		EDIFICE Utilisation
C002		M DOCUMENT/MESSAGE NAME	M	
1001	an..3	C Document/message name, coded	R	270 = Delivery note 271 = Packing list 325 = Proforma invoice 380 = Commercial invoice 630 = Shipping note 700 = Waybill 703 = House waybill 705 = Bill of lading 720 = Rail consignment note 730 = Road consignment note 740 = Air waybill 811 = Export licence 830 = Goods declaration for exportation 861 = Certificate of origin 865 = Certificate of origin form GSP 870 = Consular invoice 890 = Dangerous goods declaration 901 = Delivery verification certificate 911 = Import licence 954 = EUR1-certificate of origin
1131	an..3	C Code list qualifier	N	
3055	an..3	C Code list responsible agency, coded	N	
1000	an..35	C Document/message name	N	
C503		C DOCUMENT/MESSAGE DETAILS	D	
1004	an..35	C Document/message number	D	
1373	an..3	C Document/message status, coded	O	2 = Accompanying goods 6 = To arrive by manual means 7 = To be raised and sent 9 = To be printed
1366	an..35	C Document/message source	N	
3453	an..3	C Language, coded	N	
3153	an..3	C COMMUNICATION CHANNEL IDENTIFIER, CODED	N	
1220	n..2	C NUMBER OF COPIES OF DOCUMENT REQUIRED	O	
1218	n..2	C NUMBER OF ORIGINALS OF DOCUMENT REQUIRED	O	

SG13 DOC-DTM

DTM DATE/TIME/PERIOD

Function: A segment specifying the date/time of the identified document.

Usage : O..3

Notes : All dates and times are local.

At present the maximum occurrence of this segment 1. EDIFICE has raised a DMR to increase the number of occurrences to 3.

Ref.	Rep.	Name		EDIFICE Utilisation
C507		M DATE/TIME/PERIOD	M	
2005	an..3	M Date/time/period qualifier	M	7 = Effective date/time 36 = Expiry date 137 = Document/message date/time Date when the document is created 194 = Start date/time Used when defining a period 206 = End date/time Used when defining a period
2380	an..35	C Date/time/period	R	
2379	an..3	C Date/time/period format qualifier	R	102 = CCYYMMDD 203 = CCYYMMDDHHMM 303 = CCYYMMDDHHMMZZZ ZZZ = Time zone 304 = CCYYMMDDHHMMSSZZZ ZZZ = Time zone X03 = CCYYMMDDHHMMZZZZZ (*) ZZZZZ = Time zone X04 = CCYYMMDDHHMMSSZZZZZ (*) ZZZZZ = Time zone (*) EDIFICE code

SG15 RFF**RFF REFERENCE**

Function: A segment specifying a company specific reference.

Usage : M1

Notes :

Ref.	Rep.	Name		EDIFICE Utilisation
C506		M REFERENCE	M	ADE = Account number CR = Customer reference number ERN = Exporter's reference number IT = Internal customer number VA = VAT registration number
1153	an..3	M Reference qualifier	M	
1154	an..35	C Reference number	R	
1156	an..6	C Line number	N	
4000	an..35	C Reference version number	N	

SG18 GID-HAN-MOA-PIA-FTX-SG19-SG20-SG21-SG22-SG23-SG31-SG32**GID GOODS ITEM DETAILS**

Function: A segment describing the number and package type for the goods item.
The segment also carries a sequence number assigned to the goods item within the message.

Usage : M1

Notes :

Ref.	Rep.	Name	EDIFICE Utilisation
1496	n..5	C GOODS ITEM NUMBER	R Number generated by the application of the sender to identify the goods item within the transport instruction. It is recommended to start with value 1 for DE 1496 and to increment it by 1 for each new goods item within the message.
C213		C NUMBER AND TYPE OF PACKAGES	R
7224	n..8	C Number of packages	R
7065	an..17	C Type of packages identification	A The following codes are taken from the UN/ECE Recommendation No 21. BA = Barrel BE = Bundle BG = Bag BX = Box CG = Cage CN = Container (*) CR = Crate CS = Case CT = Carton DR = Drum EN = Envelope NE = Unpacked or unpackaged PC = Parcel PE = Pallet (*) PK = Packages RL = Reel RO = Roll SW = Shrinkwrapped TU = Tube If not applicable use appropriate code set in combination with DE 1131 and DE 3055. (*) EDIFICE code, not included in UN/ECE Recommendation No.21
1131	an..3	C Code list qualifier	D
3055	an..3	C Code list responsible agency, coded	D
7064	an..35	C Type of packages	D Used if no coded type of packages is exchanged in DE 7065.
7233	an..3	C Packaging related information, coded	N
C213		C NUMBER AND TYPE OF PACKAGES	N
7224	n..8	C Number of packages	N
7065	an..17	C Type of packages identification	N
1131	an..3	C Code list qualifier	N
3055	an..3	C Code list responsible agency, coded	N
7064	an..35	C Type of packages	N
7233	an..3	C Packaging related information, coded	N
C213		C NUMBER AND TYPE OF PACKAGES	N
7224	n..8	C Number of packages	N
7065	an..17	C Type of packages identification	N
1131	an..3	C Code list qualifier	N
3055	an..3	C Code list responsible agency, coded	N
7064	an..35	C Type of packages	N
7233	an..3	C Packaging related information, coded	N
C213		C NUMBER AND TYPE OF PACKAGES	N
7224	n..8	C Number of packages	N

Ref.	Rep.	Name		EDIFICE Utilisation
7065	an..17	C Type of packages identification	N	
1131	an..3	C Code list qualifier	N	
3055	an..3	C Code list responsible agency, coded	N	
7064	an..35	C Type of packages	N	
7233	an..3	C Packaging related information, coded	N	
C213		C NUMBER AND TYPE OF PACKAGES	N	
7224	n..8	C Number of packages	N	
7065	an..17	C Type of packages identification	N	
1131	an..3	C Code list qualifier	N	
3055	an..3	C Code list responsible agency, coded	N	
7064	an..35	C Type of packages	N	
7233	an..3	C Packaging related information, coded	N	

SG18 GID-HAN-MOA-PIA-FTX-SG19-SG20-SG21-SG22-SG23-SG31-SG32**HAN HANDLING INSTRUCTIONS**

Function: A segment specifying package handling and giving notification of hazardous material for the goods item.

Usage : D1

Notes : CO C218 must be used where this information is a legal requirement.

Ref.	Rep.	Name	EDIFICE Utilisation	
C524		C HANDLING INSTRUCTIONS	R	DE 4078 should be only used if DE 4079 cannot be used.
4079	an..3	C Handling instructions, coded	A	Identification of the instructions on how specified goods, packages or containers should be handled. It is advised that only coded instructions be passed in the segment. Use the relevant industry specific code, in combination with DE 1131/3055.
1131	an..3	C Code list qualifier	O	
3055	an..3	C Code list responsible agency, coded	A	See UN/EDIFACT code list.
4078	an..70	C Handling instructions	D	
C218		C HAZARDOUS MATERIAL	D	
7419	an..4	C Hazardous material class code, identification	R	Industry defined code, specifying the kind of hazard for a material.
1131	an..3	C Code list qualifier	O	
3055	an..3	C Code list responsible agency, coded	R	See UN/EDIFACT code list.
7418	an..35	C Hazardous material class	N	

SG18 GID-HAN-MOA-PIA-FTX-SG19-SG20-SG21-SG22-SG23-SG31-SG32**MOA MONETARY AMOUNT**

Function: A segment specifying a monetary amount associated with the goods item.

Usage : D..4

Notes :

Ref.	Rep.	Name		EDIFICE Utilisation
C516		M MONETARY AMOUNT	M	
5025	an..3	M Monetary amount type qualifier	M	40 = Customs value 44 = Declared value for carriage 123 = Statistical value 157 = Insurance value
5004	n..18	C Monetary amount	R	
6345	an..3	C Currency, coded	R	Use Iso 4217, 3 alpha code
6343	an..3	C Currency qualifier	N	
4405	an..3	C Status, coded	N	

SG18 GID-HAN-MOA-PIA-FTX-SG19-SG20-SG21-SG22-SG23-SG31-SG32**PIA ADDITIONAL PRODUCT ID**

Function: A segment providing additional identification numbers for the goods item.

Usage : O..5

Notes :

Ref.	Rep.	Name		EDIFICE Utilisation
4347	an..3	M PRODUCT ID. FUNCTION QUALIFIER	M	1 = Additional identification EN = International Article Numbering Association (EAN) MA = Machine number MN = Model number ON = Customer order number SN = Serial number SRV = EAN.UCC Global Trade Item Number UP = UPC (Universal product code) VP = Vendor's (seller's) part number 9 = EAN (International Article Numbering association) 91 = Assigned by seller or seller's agent 92 = Assigned by buyer or buyer's agent 113 = US, UCC (Uniform Code Council)
C212		M ITEM NUMBER IDENTIFICATION	M	
7140	an..35	C Item number	R	
7143	an..3	C Item number type, coded	R	
1131	an..3	C Code list qualifier	N	
3055	an..3	C Code list responsible agency, coded	R	
C212		C ITEM NUMBER IDENTIFICATION	O	
7140	an..35	C Item number	R	
7143	an..3	C Item number type, coded	R	
1131	an..3	C Code list qualifier	N	
3055	an..3	C Code list responsible agency, coded	R	
C212		C ITEM NUMBER IDENTIFICATION	O	
7140	an..35	C Item number	R	
7143	an..3	C Item number type, coded	R	
1131	an..3	C Code list qualifier	N	
3055	an..3	C Code list responsible agency, coded	R	
C212		C ITEM NUMBER IDENTIFICATION	O	
7140	an..35	C Item number	R	
7143	an..3	C Item number type, coded	R	
1131	an..3	C Code list qualifier	N	
3055	an..3	C Code list responsible agency, coded	R	
C212		C ITEM NUMBER IDENTIFICATION	O	
7140	an..35	C Item number	R	
7143	an..3	C Item number type, coded	R	
1131	an..3	C Code list qualifier	N	
3055	an..3	C Code list responsible agency, coded	R	

SG18 GID-HAN-MOA-PIA-FTX-SG19-SG20-SG21-SG22-SG23-SG31-SG32**FTX FREE TEXT**

Function: A segment providing a high level description of the material, contained within the shippable unit/package.

Usage : 01

Notes :

Ref.	Rep.	Name		EDIFICE Utilisation
4451	an..3	M TEXT SUBJECT QUALIFIER	M	AAA = Goods description
4453	an..3	C TEXT FUNCTION, CODED	N	
C107		C TEXT REFERENCE	N	
4441	an..17	M Free text identification	N	
1131	an..3	C Code list qualifier	N	
3055	an..3	C Code list responsible agency, coded	N	
C108		C TEXT LITERAL	R	
4440	an..70	M Free text	M	
4440	an..70	C Free text	O	
4440	an..70	C Free text	O	
4440	an..70	C Free text	O	
4440	an..70	C Free text	O	
3453	an..3	C LANGUAGE, CODED	N	

SG19 NAD-DTM

NAD NAME AND ADDRESS

Function: A segment identifying the coded identification, name and address of a despatch and/or delivery party.

Usage : M1

Notes : It is advised that the party identification CO C082 be used. When CO C082 cannot be used it is recommended to use the structured name and address CO C080 through DE 3207 rather than the unstructured one CO C058.

Ref.	Rep.	Name		EDIFICE Utilisation
3035	an..3	M PARTY QUALIFIER	M	DP = Delivery party Several drop off points for the same consignee. This is the 'ship to' address. PW = Despatch party Several collection points for the same consignor. 9 = EAN (International Article Numbering association) 16 = DUNS (Dun & Bradstreet) 91 = Assigned by seller or seller's agent 92 = Assigned by buyer or buyer's agent
C082		C PARTY IDENTIFICATION DETAILS	A	
3039	an..35	M Party id. identification	M	
1131	an..3	C Code list qualifier	N	
3055	an..3	C Code list responsible agency, coded	R	
C058		C NAME AND ADDRESS	D	
3124	an..35	M Name and address line	M	
3124	an..35	C Name and address line	O	
3124	an..35	C Name and address line	O	
3124	an..35	C Name and address line	O	
C080		C PARTY NAME	D	
3036	an..35	M Party name	M	
3036	an..35	C Party name	O	
3036	an..35	C Party name	O	
3036	an..35	C Party name	O	
3036	an..35	C Party name	O	
3045	an..3	C Party name format, coded	O	
C059		C STREET	D	
3042	an..35	M Street and number/p.o. box	M	
3042	an..35	C Street and number/p.o. box	O	
3042	an..35	C Street and number/p.o. box	O	
3042	an..35	C Street and number/p.o. box	O	
3164	an..35	C CITY NAME	D	
3229	an..9	C COUNTRY SUB-ENTITY IDENTIFICATION	D	
3251	an..9	C POSTCODE IDENTIFICATION	D	
3207	an..3	C COUNTRY, CODED	D	Use ISO 3166, 2 alpha code

SG19 NAD-DTM

DTM DATE/TIME/PERIOD

Function: A segment specifying a date/time relating to the identified party.

Usage : 01

Notes : All dates and times are local.

Ref.	Rep.	Name		EDIFICE Utilisation
C507	M	DATE/TIME/PERIOD	M	2 = Delivery date/time, requested 10 = Shipment date/time, requested 17 = Delivery date/time, estimated 63 = Delivery date/time, latest 64 = Delivery date/time, earliest 69 = Delivery date/time, promised for 128 = Delivery date/time, last Latest delivery date 133 = Departure date/time, estimated 189 = Departure date/time, scheduled 190 = Transshipment date/time 191 = Delivery date/time, expected 200 = Pick-up/collection date/time of cargo Used by the seller to indicate to the forwarder when the goods can be collected from the seller's premises. 234 = Collection date/time, earliest 235 = Collection date/time, latest
2005	an..3	M Date/time/period qualifier	M	
2380	an..35	C Date/time/period	R	102 = CCYYMMDD 203 = CCYYMMDDHHMM 303 = CCYYMMDDHHMMZZZ ZZZ = Time zone 304 = CCYYMMDDHHMMSSZZZ ZZZ = Time zone X03 = CCYYMMDDHHMMZZZZZ (*) ZZZZZ = Time zone X04 = CCYYMMDDHHMMSSZZZZZ (*) ZZZZZ = Time zone (*) EDIFICE code
2379	an..3	C Date/time/period format qualifier	R	

SG20 MEA
MEA MEASUREMENTS

Function: A segment specifying a measurement.

Usage : M1

Notes :

Ref.	Rep.	Name		EDIFICE Utilisation
6311	an..3	M MEASUREMENT PURPOSE QUALIFIER	M	CHW = Chargeable weight LMT = Loading meters VOL = Volume WT = Weights
C502		C MEASUREMENT DETAILS	R	
6313	an..3	C Property measured, coded	R	AAA = Unit net weight AAB = Unit gross weight AAC = Total net weight Net weight AAK = Loading meter AAW = Gross volume
6321	an..3	C Measurement significance, coded	N	
6155	an..17	C Measurement attribute identification	N	
6154	an..70	C Measurement attribute	N	
C174		C VALUE/RANGE	R	
6411	an..3	M Measure unit qualifier	M	Use the following codes from UN/ECE Recommendation no.20, Codes for Units of Measurement: CMQ = cubic centimetre FTQ = cubic foot INQ = inch cubed KGM = kilogram LBR = pound MTQ = cubic metre MTR = metre
6314	an..18	C Measurement value	R	
6162	n..18	C Range minimum	N	
6152	n..18	C Range maximum	N	
6432	n..2	C Significant digits	N	
7383	an..3	C SURFACE/LAYER INDICATOR, CODED	N	

SG21 DIM

DIM DIMENSIONS

Function: A segment specifying the dimensions.

Usage : M1

Notes :

Ref.	Rep.	Name		EDIFICE Utilisation
6145	an..3	M DIMENSION QUALIFIER	M	1 = Gross dimensions Use the following codes from UN/ECE Recommendation no.20, Codes for Units of Measurement: CMT = centimetre INH = inch MTR = metre
C211		M DIMENSIONS	M	
6411	an..3	M Measure unit qualifier	M	
6168	n..15	C Length dimension	R	
6140	n..15	C Width dimension	R	
6008	n..15	C Height dimension	R	

SG22 RFF-DTM**RFF REFERENCE**

Function: A segment specifying an identity number or a document reference number.

Usage : M1

Notes :

Ref.	Rep.	Name		EDIFICE Utilisation
C506		M REFERENCE	M	AAK = Despatch advice number AAN = Delivery schedule number AFE = Export control commodity number AFN = Account party's reference CT = Contract number ED = Export declaration EX = Export license number GN = Government reference number HS = Harmonised system IP = Import license number IV = Invoice number LC = Letter of credit number ON = Order number (purchase) PK = Packing list number SN = Seal number SRN = Shipment reference number VN = Order number (vendor)
1153	an..3	M Reference qualifier	M	
1154	an..35	C Reference number	R	
1156	an..6	C Line number	D	
4000	an..35	C Reference version number	N	To hold the line number within the referenced document identified in DE 1154. That is the case when DE 1153 = 'ON' or 'AAN'.

SG22 RFF-DTM**DTM DATE/TIME/PERIOD**

Function: A segment indicating the date/time of the reference document.

Usage : D1

Notes : All dates and times are local.

Ref.	Rep.	Name		EDIFICE Utilisation
C507		M DATE/TIME/PERIOD	M	
2005	an..3	M Date/time/period qualifier	M	171 = Reference date/time
2380	an..35	C Date/time/period	R	
2379	an..3	C Date/time/period format qualifier	R	102 = CCYMMDD 203 = CCYMMDDHHMM 303 = CCYMMDDHHMMZZZ ZZZ = Time zone 304 = CCYMMDDHHMMSSZZZ ZZZ = Time zone X03 = CCYMMDDHHMMZZZZZ (*) ZZZZ = Time zone X04 = CCYMMDDHHMMSSZZZZZ (*) ZZZZ = Time zone (*) EDIFICE code

SG23 PCI-GIN

PCI PACKAGE IDENTIFICATION

Function: A segment specifying packaging identification numbers or shipping marks for the goods item.

Usage : M1

Notes : CO C210 is not used when DE 4233 is 24.

Ref.	Rep.	Name		EDIFICE Utilisation
4233	an..3	C MARKING INSTRUCTIONS, CODED	R	16 = Buyer's instructions 17 = Seller's instructions 24 = Shipper assigned For License plate only
C210		C MARKS & LABELS	D	
7102	an..35	M Shipping marks	M	
7102	an..35	C Shipping marks	O	
7102	an..35	C Shipping marks	O	
7102	an..35	C Shipping marks	O	
7102	an..35	C Shipping marks	O	
7102	an..35	C Shipping marks	O	
7102	an..35	C Shipping marks	O	
7102	an..35	C Shipping marks	O	
7102	an..35	C Shipping marks	O	
7102	an..35	C Shipping marks	O	
8275	an..3	C CONTAINER/PACKAGE STATUS, CODED	N	
C827		C TYPE OF MARKING	N	
7511	an..3	M Type of marking, coded	N	
1131	an..3	C Code list qualifier	N	
3055	an..3	C Code list responsible agency, coded	N	

SG23 PCI-GIN**GIN GOODS IDENTITY NUMBER**

Function: A segment specifying the licence plate number.

Usage : D1

Notes : When using bar coding this information relates to the appropriate data identifiers that indicate License plate.

Ref.	Rep.	Name	EDIFICE Utilisation
7405	an..3	M IDENTITY NUMBER QUALIFIER	M ML = Marking/label number VZ = Transport unit identification according to ISO/IEC 15459 WA = Indivisible transport unit according to ISO/IEC 15459 WB = Divisible transport unit according to ISO/IEC 15459
C208		M IDENTITY NUMBER RANGE	M The first DE 7402 in the composite data element is the start of the consecutively numbered range, the second DE 7402 indicates the end of the range. If there is no range only the first DE 7402 is used. If the identity numbers are not sequential and part of a series (e.g. 1,3,10) then a separate CO C208 and DE 7402 must be used for each identity number.
7402	an..35	M Identity number	M
7402	an..35	C Identity number	D
C208		C IDENTITY NUMBER RANGE	O As for first CO C208
7402	an..35	M Identity number	M
7402	an..35	C Identity number	D
C208		C IDENTITY NUMBER RANGE	O As for first CO C208
7402	an..35	M Identity number	M
7402	an..35	C Identity number	D
C208		C IDENTITY NUMBER RANGE	O As for first CO C208
7402	an..35	M Identity number	M
7402	an..35	C Identity number	D
C208		C IDENTITY NUMBER RANGE	O As for first CO C208
7402	an..35	M Identity number	M
7402	an..35	C Identity number	D

SG31 TCC-MOA-QTY-LOC**TCC TRANSPORT CHARGE/RATE CALCULATIONS**

Function: A segment specifying the Harmonized system number and related rate details.

Usage : M1

Notes :

Ref.	Rep.	Name		EDIFICE Utilisation
C200		C CHARGE	N	
8023	an..17	C Freight and charges identification	N	
1131	an..3	C Code list qualifier	N	
3055	an..3	C Code list responsible agency, coded	N	
8022	an..26	C Freight and charges	N	
4237	an..3	C Prepaid/collect indicator, coded	N	
7140	an..35	C Item number	N	
C203		C RATE/TARIFF CLASS	O	
5243	an..9	M Rate/tariff class identification	M	B = Basic
1131	an..3	C Code list qualifier	R	105 = Customs declaration type
3055	an..3	C Code list responsible agency, coded	O	
5242	an..35	C Rate/tariff class	R	This field may contain two numbers, Export license number and Export control commodity number.
5275	an..6	C Supplementary rate/tariff basis identification	N	
1131	an..3	C Code list qualifier	N	
3055	an..3	C Code list responsible agency, coded	N	
5275	an..6	C Supplementary rate/tariff basis identification	N	
1131	an..3	C Code list qualifier	N	
3055	an..3	C Code list responsible agency, coded	N	
C528		C COMMODITY/RATE DETAIL	R	
7357	an..18	C Commodity/rate identification	R	Harmonized system number
1131	an..3	C Code list qualifier	R	169 = Harmonized system
3055	an..3	C Code list responsible agency, coded	N	
C554		C RATE/TARIFF CLASS DETAIL	N	
5243	an..9	C Rate/tariff class identification	N	
1131	an..3	C Code list qualifier	N	
3055	an..3	C Code list responsible agency, coded	N	

SG31 TCC-MOA-QTY-LOC

MOA MONETARY AMOUNT

Function: A segment specifying the Customs value for a Harmonized system number.

Usage : R 1

Notes :

Ref.	Rep.	Name		EDIFICE Utilisation
C516		M MONETARY AMOUNT	M	
5025	an..3	M Monetary amount type qualifier	M	40 = Customs value
5004	n..18	C Monetary amount	R	
6345	an..3	C Currency, coded	R	Use ISO 4217, 3 alpha code
6343	an..3	C Currency qualifier	N	
4405	an..3	C Status, coded	N	

SG31 TCC-MOA-QTY-LOC

QTY QUANTITY

Function: A segment specifying the delivery quantity for a Harmonized system number.

Usage : R 1

Notes :

Ref.	Rep.	Name	EDIFICE Utilisation
C186		M QUANTITY DETAILS	M
6063	an..3	M Quantity qualifier	M 131 = Delivery quantity
6060	n..15	M Quantity	M HS number quantity
6411	an..3	C Measure unit qualifier	R Use the following codes from UN/ECE Recommendation no.20, Codes for Units of Measurement: CLT = centilitre CMT = centimetre GRM = gram KGM = kilogram KTM = kilometre LTR = litre MGM = milligram MMT = millimetre MTK = square metre MTQ = cubic metre MTR = metre PCE = piece (*) (*) EDIFICE code, not included in UN/ECE Recommendation No. 20 Other codes should be previously agreed between trading partners.

SG31 TCC-MOA-QTY-LOC

LOC PLACE/LOCATION IDENTIFICATION

Function: A segment indicating a location where customs clearance should take place, and the country of origin of the goods.

Usage : 03

Notes :

Ref.	Rep.	Name	EDIFICE Utilisation
3227	an..3	M PLACE/LOCATION QUALIFIER	M 10 = Place of acceptance 22 = Customs office of clearance 27 = Country of origin 115 = Free zone of export
C517		C LOCATION IDENTIFICATION	R
3225	an..25	C Place/location identification	R State/Province when DE 3227 is 10 or 22 Use ISO 3166, 2 alpha code when DE 3227 is 27 Free trade zone number when DE 3227 is 115
1131	an..3	C Code list qualifier	D 163 = Country sub-entity Used when DE 3227 is 10 or 22
3055	an..3	C Code list responsible agency, coded	O
3224	an..70	C Place/location	O
C519		C RELATED LOCATION ONE IDENTIFICATION	N
3223	an..25	C Related place/location one identification	N
1131	an..3	C Code list qualifier	N
3055	an..3	C Code list responsible agency, coded	N
3222	an..70	C Related place/location one	N
C553		C RELATED LOCATION TWO IDENTIFICATION	N
3233	an..25	C Related place/location two identification	N
1131	an..3	C Code list qualifier	N
3055	an..3	C Code list responsible agency, coded	N
3232	an..70	C Related place/location two	N
5479	an..3	C RELATION, CODED	N

SG32 DGS-FTX-SG33**DGS DANGEROUS GOODS**

Function: A segment specifying dangerous goods regulatory and identification information related to the goods items.

Usage : M1

Notes : One goods item may be in different dangerous goods classes.

Ref.	Rep.	Name		EDIFICE Utilisation
8273	an..3	C DANGEROUS GOODS REGULATIONS, CODED	R	ADR = European agreement on the international carriage of dangerous goods on road. CFR = 49 code of federal regulations US. ICA = IATA ICAO Air transport. IMD = IMO IMDG code Sea transport. RID = Railroad dangerous goods book (RID) Rail/road transport.
C205		C HAZARD CODE	O	
8351	an..7	M Hazard code identification	M	
8078	an..7	C Hazard substance/item/page number	O	
8092	an..10	C Hazard code version number	O	
C234		C UNDG INFORMATION	O	
7124	n4	C UNDG number	O	Use UN-number, if applicable
7088	an..8	C Dangerous goods flashpoint	O	
C223		C DANGEROUS GOODS SHIPMENT FLASHPOINT	O	
7106	n3	C Shipment flashpoint	O	The shipment flashpoint is regarded as positive, unless it is preceded by a minus sign.
6411	an..3	C Measure unit qualifier	O	CEL = degree Celcius FAH = degree Fahrenheit
8339	an..3	C PACKING GROUP, CODED	O	1 = Great danger 2 = Medium danger 3 = Minor danger
8364	an..6	C EMS NUMBER	O	
8410	an..4	C MFAG	O	
8126	an..10	C TREM CARD NUMBER	O	
C235		C HAZARD IDENTIFICATION	O	
8158	an..4	C Hazard identification number, upper part	O	
8186	an4	C Substance identification number, lower part	O	
C236		C DANGEROUS GOODS LABEL	O	
8246	an..4	C Dangerous goods label marking	O	
8246	an..4	C Dangerous goods label marking	O	
8246	an..4	C Dangerous goods label marking	O	
8255	an..3	C PACKING INSTRUCTION, CODED	O	
8325	an..3	C CATEGORY OF MEANS OF TRANSPORT, CODED	O	
8211	an..3	C PERMISSION FOR TRANSPORT, CODED	N	

SG32 DGS-FTX-SG33**FTX FREE TEXT**

Function: A segment specifying additional dangerous goods information

Usage : O..9

Notes : When used it is important for the receiver to know in advance if the free text has to be checked before completing the processing of the transaction.
The appropriate code in DE 4453 must then be used.

Ref.	Rep.	Name		EDIFICE Utilisation
4451	an..3	M TEXT SUBJECT QUALIFIER	M	AAC = Dangerous goods additional information AAD = Dangerous goods, technical name HAN = Handling instructions HAZ = Hazard information 1 = Text for subsequent use 3 = Text for immediate use Text must be read before actioning the message.
4453	an..3	C TEXT FUNCTION, CODED	R	
C107		C TEXT REFERENCE	N	
4441	an..17	M Free text identification	N	
1131	an..3	C Code list qualifier	N	
3055	an..3	C Code list responsible agency, coded	N	
C108		C TEXT LITERAL	R	
4440	an..70	M Free text	M	
4440	an..70	C Free text	O	
4440	an..70	C Free text	O	
4440	an..70	C Free text	O	
4440	an..70	C Free text	O	
3453	an..3	C LANGUAGE, CODED	N	

SG33 CTA-COM**CTA CONTACT INFORMATION**

Function: A segment identifying a person or department, and their function.

Usage : M1

Notes :

Ref.	Rep.	Name	EDIFICE Utilisation	
3139	an..3	C CONTACT FUNCTION, CODED	R	HE = Emergency dangerous goods contact HG = Dangerous goods contact
C056		C DEPARTMENT OR EMPLOYEE DETAILS	R	If a code is available use DE 3413, otherwise use DE 3412.
3413	an..17	C Department or employee identification	D	
3412	an..35	C Department or employee	D	

SG33 CTA-COM

COM COMMUNICATION CONTACT

Function: A segment identifying a communications type and number.

Usage : O..3

Notes :

Ref.	Rep.	Name		EDIFICE Utilisation
C076		M COMMUNICATION CONTACT	M	
3148	an..512	M Communication number	M	
3155	an..3	M Communication channel qualifier	M	EM = Electronic mail FX = Telefax TE = Telephone

SG37 EQD-MEA-DIM-SEL

EQD EQUIPMENT DETAILS

Function: A segment identifying a unit of equipment.

Usage : M1

Notes :

Ref.	Rep.	Name		EDIFICE Utilisation
8053	an..3	M EQUIPMENT QUALIFIER	M	BPN = Box pallet non exchangeable CN = Container EFP = Exchangeable EUR flat pallet PA = Pallet TE = Trailer UL = ULD (Unit load device) The identification of the equipment is provided at this point.
C237		C EQUIPMENT IDENTIFICATION	R	
8260	an..17	C Equipment identification number	R	
1131	an..3	C Code list qualifier	N	
3055	an..3	C Code list responsible agency, coded	N	
3207	an..3	C Country, coded	N	
C224		C EQUIPMENT SIZE AND TYPE	N	
8155	an..10	C Equipment size and type identification	N	
1131	an..3	C Code list qualifier	N	
3055	an..3	C Code list responsible agency, coded	N	
8154	an..35	C Equipment size and type	N	
8077	an..3	C EQUIPMENT SUPPLIER, CODED	N	
8249	an..3	C EQUIPMENT STATUS, CODED	N	
8169	an..3	C FULL/EMPTY INDICATOR, CODED	N	

SG37 EQD-MEA-DIM-SEL
MEA MEASUREMENTS

Function: A segment specifying a measurement, other than dimensions, associated with the identified unit of equipment.

Usage : 0..3

Notes :

Ref.	Rep.	Name		EDIFICE Utilisation
6311	an..3	M MEASUREMENT PURPOSE QUALIFIER	M	CHW = Chargeable weight LMT = Loading meters VOL = Volume WT = Weights AAA = Unit net weight AAB = Unit gross weight AAC = Total net weight Net weight AAD = Total gross weight AAK = Loading meter AAW = Gross volume Use the following codes from UN/ECE Recommendation no.20, Codes for Units of Measurement: CMQ = cubic centimetre FTQ = cubic foot INQ = inch cubed KGM = kilogram LBR = pound MTQ = cubic metre MTR = metre
C502		C MEASUREMENT DETAILS	R	
6313	an..3	C Property measured, coded	R	
6321	an..3	C Measurement significance, coded	N	
6155	an..17	C Measurement attribute identification	N	
6154	an..70	C Measurement attribute	N	
C174		C VALUE/RANGE	R	
6411	an..3	M Measure unit qualifier	M	
6314	an..18	C Measurement value	R	
6162	n..18	C Range minimum	N	
6152	n..18	C Range maximum	N	
6432	n..2	C Significant digits	N	
7383	an..3	C SURFACE/LAYER INDICATOR, CODED	N	

SG37 EQD-MEA-DIM-SEL

DIM DIMENSIONS

Function: A segment specifying gross dimensions, associated with the identified unit of equipment.

Usage : 01

Notes :

Ref.	Rep.	Name	EDIFICE Utilisation	
6145	an..3	M DIMENSION QUALIFIER	M	1 = Gross dimension Use the following codes from UN/ECE Recommendation no.20, Codes for Units of Measurement: CMT = centimetre INH = inch MTR = metre
C211		M DIMENSIONS	M	
6411	an..3	M Measure unit qualifier	M	
6168	n..15	C Length dimension	R	
6140	n..15	C Width dimension	R	
6008	n..15	C Height dimension	R	

SG37 EQD-MEA-DIM-SEL**SEL SEAL NUMBER**

Function: A segment specifying a seal number and party responsible, for the identified unit of equipment.

Usage : D 1

Notes :

Ref.	Rep.	Name	EDIFICE Utilisation	
9308	an..10	M SEAL NUMBER	M	CA = Carrier CU = Customs SH = Shipper TO = Terminal operator
C215		C SEAL ISSUER	R	
9303	an..3	C Sealing party, coded	R	
1131	an..3	C Code list qualifier	N	
3055	an..3	C Code list responsible agency, coded	N	
9302	an..35	C Sealing party	N	
4517	an..3	C SEAL CONDITION, CODED	N	

UNT MESSAGE TRAILER

Function: A service segment ending, and providing information for checking the completeness of a message.

Usage : M1

Notes : Refer to EDIFICE Utilisation of the UN/EDIFACT Service Segments, Issue EDSS04.

Ref.	Rep.	Name	EDIFICE Utilisation	
0074	n..6	M NUMBER OF SEGMENTS IN A MESSAGE	M	Count of all segments in the message, UNH and UNT included.
0062	an..14	M MESSAGE REFERENCE NUMBER	M	Must be the same reference number as in DE 0062 of the UNH segment of this message.

EXAMPLES

The Transport Instruction message can be used for both outgoing and incoming shipments.

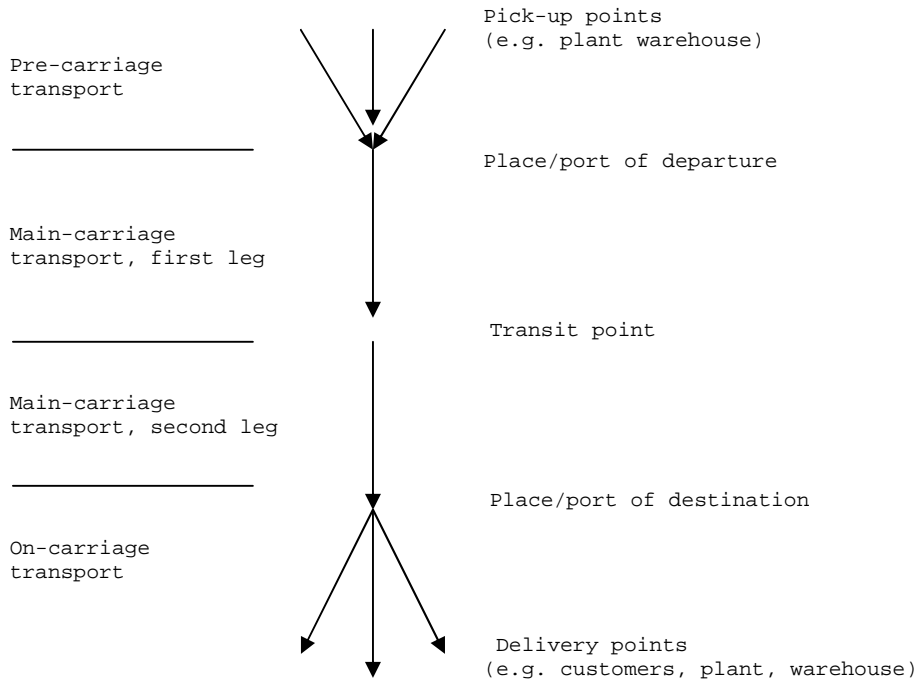
Regarding the transport details it is possible to specify not only the main-carriage transport, but also pre-carriage transport and on-carriage transport, by using a SG8 for each stage.

The SG8 can be used several times if there is more than one leg in a part of the transport chain, like for example the main-carriage.

Also there can be several SG8 for different pre-carriage and/or on-carriage transports from/to different locations.

When a shipment has different pick-up and/or delivery points, EDIFICE recommends that the NAD segment in SG19 is used to indicate which packages are to be picked up and/or delivered at each location.

Following is an illustration of the different transport stages.



EXAMPLE 1 - International shipment going by air.

This example shows a situation where there is just one pick-up point, one main-carriage transport leg, and one delivery point. This is also an example of a dangerous goods shipment.

UNB+UNOC:3+123456789:1:X+987654321:1:X+021209:1909+88+X:AA+IFTMIN++1+X+1'	Message header
UNH+3211+IFTMIN:D:97A:UN:EDTI02'	Shipment number
BGM+340+927649+9'	Creation date/time
DTM+137:200102100930:203'	Transport service requirement
TSR+7++3'	Insurance value
MOA+157:15000:FIM'	Remarks to be printed on transport documents
FTX+ICN+++IP 345654'	Total gross weight (167 kilograms)
CNT+7:167:KGM'	Total number of packages (1 package)
CNT+11:1:PCE'	Total volume (0.576 cubicmetres)
CNT+15:0.576:MTQ'	Terms of delivery
TOD+6++CIP'	Place of terms of delivery
LOC+1+FRA::3'	AWB number
RFF+AWB:220-44335566'	Shipment reference number
RFF+SRN:AB12345'	Date of reference
DTM+171:20010210:102'	Freight charges to be prepaid
CPI+++P'	Freight charge indicator
TCC+100000'	Freight charge amount
MOA+23:2560.00:FIM'	Pre-carriage transport
TDT+10+++3+++FI123++++::DRS777:FI'	Place of pick-up, coded
LOC+5+FITMP'	Pick-up date/time
DTM+200:200102101400:203'	Main-carriage transport
TDT+20+LH1234+4++LH'	Place of departure
LOC+5+HEK::3'	Departure date/time, estimated
DTM+133:200102102200:203'	Place of destination
LOC+8+FRA::3'	ETA date/time
DTM+132:200102110120:203'	On-carriage transport
TDT+10+++3+++D87++++::HH8976:DE'	Place of delivery, coded
LOC+9+DEHZR'	Requested delivery date/time
DTM+191:200102111200:203'	Seller's code
NAD+SE+SELLER-001::91'	Account number
RFF+ADE:DD23456'	Consignor's code
NAD+CZ+CONSIGNOR-01::91'	Consignor's contact person
CTA+IC+:E.X. PORTER'	Telephone number
COM+3221234567:TE'	Fax number
COM+3221234599:FX'	Invoice number
DOC+380+422567:2'	Invoice date
DTM+137:20010210:102'	Dangerous goods declaration
DOC+890+:2'	Buyer's code
NAD+BY+BUYER-001::92'	Consignee's code
NAD+CN+CONSIGNEE-01::91'	Freight forwarder's code
NAD+FW+FORWARDER-01::91'	Notify party.
NAD+NI+++DIS+EINSTR 8+ULM++DE-1044+DE'	Example where a party id is not available, so CO C080 through DE 3207 have been used.
CTA+IC+:E SCHULZ'	Contact person of the Notify party
COM+496298765:TE'	Telephone number
GID+1+1:CT'	One carton
HAN+HWC'	Handle with care
FTX+AAA+++FLAMMABLE LIQUID'	Goods description
MEA+WT+AAB+KGM:167'	Gross weight in kilos
MEA+VOL+AAW+MTQ:0.576'	Gross volume in cubic metres
DIM+1+CMT:120:80:60'	Dimensions in centimetres
RFF+ON:DD123456'	Purchase order number
PCI+17+IP8654/97'	Shipping mark
PCI+24'	Trigger for license plate
GIN+VZ+LEABC123456'	Package number - License plate
DGS+ICA++1993'	Dangerous goods details
CTA+HG+C.O. ORDINATOR'	Dangerous goods contact person
COM+3221234688:TE'	Telephone number
COM+3221234699:FX'	Fax number
UNT+58+3211'	Count of segments
UNZ+1+88'	

EXAMPLE 2 - International shipment going by air.

This example shows an air shipment consisting of two main-carriage transport legs, and where there are two pick-up points. The pick-up point address is indicated for each package.

UNB+UNOC:3+123456789:1:X+987654321:1:X+021209:1909+88+X:AA+IFTMIN++1+X+1'	Message header
UNH+3212+IFTMIN:D:97A:UN:EDTI02'	Shipment number
BGM+340+927655+9'	Creation date/time
DTM+137:200102100930:203'	Transport service requirement
TSR+7++3'	Insurance value
MOA+157:65000:FIM'	Remarks to be printed on transport documents
FTX+ICN+++IP 345654'	Total gross weight
CNT+7:334:KGM'	Total number of packages
CNT+11:2:PCE'	Total volume(s)
CNT+15:1.152:MTQ'	Terms of delivery
TOD+6++CIP'	Place of terms of delivery
LOC+1+NYC::3'	AWB number
RFF+AWB:220-11223344'	Shipment reference number
RFF+SRN:AB12355'	Date of reference
DTM+171:20010210:102'	Freight charges to be prepaid
CPI+++P'	Freight charge indicator
TCC+100000'	Freight charge amount
MOA+23:2560.00:FIM'	Pre-carriage transport
TDT+10+++3+++FI123+++:::DRS777:FI'	Place of pick-up, coded
LOC+5+FITKU'	Pick-up date/time
DTM+200:200102101400:203'	Pre-carriage transport
TDT+10+++3+++FI224+++:::ADG654:FI'	Place of pick-up, coded
LOC+5+FITMP'	pick-up date/time
DTM+200:200102101530:203'	Main-carriage transport
TDT+20+LH1234+4+++LH'	Place of departure
LOC+5+HEK::3'	Departure date/time, estimated
DTM+133:200102102200:203'	Place of transshipment
LOC+13+FRA::3'	ETA date/time
DTM+132:200102110120:203'	Main-carriage transport
TDT+20+LH7766+4+++LH'	Place of transshipment
LOC+13+FRA::3'	Departure date/time
DTM+133:200102111430:203'	Place of destination
LOC+8+NYC::3'	ETA date/time
DTM+132:200102111940:203'	Seller's code
NAD+SE+SELLER-001::91'	Account number
RFF+ADE:DD23456'	Consignor's code
NAD+CZ+CONSIGNOR-01::91'	Consignor's contact person
CTA+IC+:E.X. PORTER'	Telephone number
COM+3221234567:TE'	Buyer's code
NAD+BY+BUYER-001::92'	Consignee's code
NAD+CN+CONSIGNEE-01::91'	Freight forwarder's code
NAD+FW+FORWARDER-01::91'	One case
GID+1+1:CS'	Goods description
FTX+AAA+++MACHINE PARTS'	Pick-up address, coded
NAD+PW+FIE899::91'	Pick-up date/time
DTM+200:200102101400:203'	Gross weight in kilos
MEA+WT+AAB+KGM:167'	Gross volume in cubic metres
MEA+VOL+AAW+MTQ:0.576'	Dimensions in centimetres
DIM+1+CMT:120:80:60'	Shipping mark
DIM+1+CMT:120:80:60'	Trigger for package number (license plate)
PCI+17+IP8654/97'	Package number - License plate
PCI+24'	One case
GIN+VZ+LEABC123882'	Goods description
GID+2+1:CS'	Pick-up address, coded
FTX+AAA+++MACHINE PARTS'	Pick-up date/time
NAD+PW+FIR444::91'	Gross weight in kilos
DTM+200:199702101530:203'	Gross volume in cubic metres
MEA+WT+AAB+KGM:167'	Dimensions in centimetres
MEA+VOL+AAW+MTQ:0.576'	Shipping mark
DIM+1+CMT:120:80:60'	Trigger for package number (license plate)
DIM+1+CMT:120:80:60'	Package number - License plate
PCI+17+IP8654/97'	Count of segments
PCI+24'	
GIN+VZ+LEABCCD554677'	
UNT+62+3212'	
UNZ+1+88'	

EXAMPLE 3 - International shipment going by truck.

This example shows a truck shipment consisting of one main-carriage transport leg, and where there are two delivery points. The delivery point address is indicated for each package. In this example there is no TDT segment for the on-carriage transport as it is assumed that the consignor has no knowledge how goods is distributed.

UNB+UNOC:3+123456789:1:X+987654321:1:X+021209:1909+88+X:AA+IFTMIN++1+X+1'	Message header
UNH+3213+IFTMIN:D:97A:UN:EDTI02'	Shipment number
BGM+340+927701+9'	Creation date/time
DTM+137:200102100930:203'	Transport service requirement
TSR+7++3'	Insurance value
MOA+157:65000:FIM'	Total gross weight
CNT+7:501:KGM'	Total number of packages
CNT+11:3:PCE'	Total volume
CNT+15:1.728:MTQ'	Terms of delivery
TOD+6++CIP'	Place of terms of delivery
LOC+1+FRA::3'	Shipment reference number
RFF+SRN:AB12355'	Date of reference
DTM+171:20010210:102'	Freight charges to be prepaid
CPI+++P'	Freight charge indicator
TCC+100000'	Freight charge amount
MOA+23:2560.00:FIM'	Main-carriage transport
TDT+20++3++UPS'	Place of departure
LOC+5+HEK::3'	Departure date/time, estimated
DTM+133:200102101800:203'	Place of destination
LOC+8+FRA::3'	ETA date/time
DTM+132:200102111940:203'	Seller's code
NAD+SE+SELLER-001::91'	Account number
RFF+ADE:DD23456'	Consignor's code
NAD+CZ+CONSIGNOR-01::91'	Consignor's contact person
CTA+IC+:E.X. PORTER'	Telephone number
COM+3221234567:TE'	Buyer's code
NAD+BY+BUYER-001::92'	Consignee's code
NAD+CN+CONSIGNEE-01::91'	Freight forwarder's code
NAD+FW+FORWARDER-01::91'	One case
GID+1+1:CS'	Goods description
FTX+AAA+++MACHINE PARTS'	Delivery party
NAD+DP+DE665::92'	Delivery date/time, requested
DTM+2:200102120800:203'	Gross weight in kilos
MEA+WT+AAB+KGM:167'	Gross volume in cubic metres
MEA+VOL+AAW+MTQ:0.576'	Dimensions in centimetres
DIM+1+CMT:120:80:60'	Shipping mark
PDI+17+IP8654/97'	Trigger for package number (license plate)
PCI+24'	Package number - License plate
GIN+VZ+LEABC123882'	One case
GID+2+1:CS'	Goods description
FTX+AAA+++MACHINE PARTS'	Delivery party
NAD+DP+DE665::92'	Delivery date/time, requested
DTM+2:200102120800:203'	Gross weight in kilos
MEA+WT+AAB+KGM:167'	Gross volume in cubic metres
MEA+VOL+AAW+MTQ:0.576'	Dimensions in centimetres
DIM+1+CMT:120:80:60'	Shipping mark
PDI+17+IP8654/97'	Trigger for package number (license plate)
PCI+24'	Package number - License plate
GIN+VZ+LEABC123883'	One case
GID+3+1:CS'	Goods description
FTX+AAA+++MACHINE PARTS'	Delivery party
NAD+DP+DE888::91'	Delivery date/time, requested
DTM+2:200102120800:203'	Gross weight in kilos
MEA+WT+AAB+KGM:167'	Gross volume in cubic metres
MEA+VOL+AAW+MTQ:0.576'	Dimensions in centimetres
DIM+1+CMT:120:80:60'	Shipping mark
PDI+17+IP8654/97'	Trigger for package number (license plate)
PCI+24'	Package number - License plate
GIN+VZ+LEABCCD554677'	Trailer number
EQD+TE+DKF456'	Customs seal
SEL+LK8888+CU'	Count of segments
UNT+61+3213'	
UNZ+1+88'	

EXAMPLE 4 - Use of Cancellation option

This is a cancellation message for the shipment in example 3.

UNB+UNOC:3+123456789:1:X+987654321:1:X+021209:1909+88+X:AA+IFTMIN++1+X+1'	Message header
UNH+3214+IFTMIN:D:97A:UN:EDTI02'	Shipment 927655 cancelled
BGM+340+927701+1'	Creation date/time
DTM+137:200102100930:203'	Main-carriage transport
TDT+20++3++UPS'	Place of departure
LOC+5+HEK:::3'	Departure date/time, estimated
DTM+133:200102101800:203'	Place of destination
LOC+8+FRA:::3'	ETA date/time
DTM+132:200102111940:203'	Seller's code
NAD+SE+SELLER-001::91'	Account number
RFF+ADE:DD23456'	Consignor's code
NAD+CZ+CONSIGNOR-01::91'	Consignor's contact person
CTA+IC+:E.X. PORTER'	Telephone number
COM+3221234567:TE'	Buyer's code
NAD+BY+BUYER-001::92'	Consignee's code
NAD+CN+CONSIGNEE-01::91'	Freight forwarder's code
NAD+FW+FORWARDER-01::91'	Count of segments
UNT+17+3214'	
UNZ+1+88'	

EXAMPLE 5 - Use of Replace option

This is a replace message for the shipment in example 3.
One package has been taken out of the shipment.

UNB+UNOC:3+123456789:1:X+987654321:1:X+021209:1909+88+X:AA+IFTMIN++1+X+1'	
UNH+3215+IFTMIN:D:97A:UN:EDTI02'	Message header
BGM+340+927701+5'	Shipment number
DTM+137:200102100930:203'	Creation date/time
TSR+7++3'	Transport service requirement
MOA+157:65000:FIM'	Insurance value
CNT+7:334:KGM'	Total gross weight
CNT+11:2:PCE'	Total number of packages
CNT+15:1.152:MTQ'	Total volume
TOD+6++CIP'	Terms of delivery
LOC+1+FRA::3'	Place of terms of delivery
RFF+SRN:AB12355'	Shipment reference number
DTM+171:20010210:102'	Date of reference
CPI+++P'	Freight charges to be prepaid
TCC+100000'	Freight charge indicator
MOA+23:2560.00:FIM'	Freight charge amount
TDT+20++3++UPS'	Main-carriage transport
LOC+5+HEK::3'	Place of departure
DTM+133:200102110800:203'	Departure date/time, estimated
LOC+8+FRA::3'	Place of destination
DTM+132:200102111940:203'	ETA date/time
NAD+SE+SELLER-001::91'	Seller's code
RFF+ADE:DD23456'	Account number
NAD+CZ+CONSIGNOR-01::91'	Consignor's code
CTA+IC+:E.X. PORTER'	Consignor's contact person
COM+3221234567:TE'	Telephone number
NAD+BY+BUYER-001::92'	Buyer's code
NAD+CN+CONSIGNEE-01::91'	Consignee's code
NAD+FW+FORWARDER-01::91'	Freight forwarder's code
GID+1+1:CS'	One case
FTX+AAA+++MACHINE PARTS'	Goods description
NAD+DP+DE665::92'	Delivery party
DTM+2:200102120800:203'	Delivery date/time, requested
MEA+WT+AAB+KGM:167'	Gross weight in kilos
MEA+VOL+AAW+MTQ:0.576'	Gross volume in cubic metres
DIM+1+CMT:120:80:60'	Dimensions in centimetres
PCI+17+IP8654/97'	Shipping mark
PCI+24'	Trigger for package number (license plate)
GIN+VZ+LEABC123882'	Package number - License plate
GID+2+1:CS'	One case
FTX+AAA+++MACHINE PARTS'	Goods description
NAD+DP+DE888::92'	Delivery party
DTM+2:200102120800:203'	Delivery date/time, requested
MEA+WT+AAB+KGM:167'	Gross weight in kilos
MEA+VOL+AAW+MTQ:0.576'	Gross volume in cubic metres
DIM+1+CMT:120:80:60'	Dimensions in centimetres
PCI+17+IP8654/97'	Shipping mark
PCI+24'	Trigger for package number (license plate)
GIN+VZ+LEQBCCD554677'	Package number - License plate
EQD+TE+DKF456'	Trailer number
SEL+LK8888+CU'	Customs seal
UNT+51+3215'	Count of segments
UNZ+1+88'	

EXAMPLE 6 - Forwarding instruction

This example shows a situation where the sender of the message gives instructions to a broker regarding the forwarding of a consignment.

UNB+UNOC:3+123456789:1:X+987654321:1:X+021209:1909+88+X:AA+IFTMIN++1+X+1'	Message header
UNH+3216+IFTMIN:D:97A:UN:EDTI02'	Shipment number
BGM+610+724000075+9'	Creation date/time
DTM+137:200102100930:203'	Transport service requirement
TSR+8'	Delivery instructions
FTX+DIN+1++Call before delivery'	Total gross weight (28 kilograms)
CNT+7:28:KGM'	Total number of packages (1 package)
CNT+11:1:PCE'	Total volume (0.075 cubicmetres)
CNT+15:0.075:MTQ'	Vendor order number
RFF+VN:MO74213'	Customer order number
RFF+CO:AB12345'	Date of reference
DTM+171:20010210:102'	Main-carriage transport
TDT+20++4++DE02'	Place of delivery, coded
LOC+7+DEA876::91'	Requested delivery date/time
DTM+191:200102111200:203'	Consignor's code
NAD+CZ+CONSIGNOR-01::91'	Consignor's contact person
CTA+IC+:E.X. PORTER'	Telephone number
COM+3221234567:TE'	Fax number
COM+3221234599:FX'	Consignee's code
NAD+CN+CONSIGNEE-01::91'	Consignee's contact person
CTA+IC+:DEPT 013'	Telephone number
COM+047665432:TE'	Consignor's code
NAD+CN+FP1::91'	One carton
GID+1+1:CT'	Gross weight in kilos
MEA+WT+AAB+KGM:28'	Gross volume in cubic metres
MEA+VOL+AAW+MTQ:0.075'	Dimensions in centimetres
DIM+1+CMT:50:50:30'	Trigger for package number (license plate)
PCI+24'	Package number - License plate
GIN+VZ+LEABCGG114'	Count of segments
UNT+29+3216'	
UNZ+1+88'	