



EDIFICE Message Implementation Guideline

Delivery Schedule

DELFOR Issue EDDF07

Endorsed 15 June 2005

Based on UN/EDIFACT D.98B DELFOR Message

Copyright ©EDIFICE 2005

All rights reserved. No part of this publication may be reproduced or transmitted in any form or by any means without prior permission of EDIFICE.

Notwithstanding the fact that the utmost care has been observed in the collecting, drawing up and formulating of data, EDIFICE can under no circumstances be held liable for errors, omissions or misinterpretations as a result of the information compiled in the guidelines.

EDIFICE
The European B2B Forum for the Electronics Industry
EDIFICE secretariat
Dora Cresens
Tiensestraat 2
B-3320 Hoegaarden
Belgium
Tel: +32 16 76 54 40
Fax: +32 16 76 53 58
Email: Dora.Cresens@edifice.org

TABLE OF CONTENTS

<u>TITLE</u>	<u>PAGE</u>
COMPARISON TO PREVIOUS ISSUE	3
EDIFICE FUNCTIONAL DEFINITION	5
REFERENCES	6
EXPLANATORY NOTES	6
MESSAGE STRUCTURE CHART	7
BRANCHING DIAGRAM	9
SEGMENT GROUPS/SEGMENTS DESCRIPTION	11
UNH MESSAGE HEADER	16
BGM BEGINNING OF MESSAGE	17
DTM DATE/TIME/PERIOD	18
SG1 - RFF REFERENCE	19
SG1 - DTM DATE/TIME/PERIOD	20
SG2 - NAD NAME AND ADDRESS	21
SG3 - RFF REFERENCE	22
SG4 - CTA CONTACT INFORMATION	23
SG4 - COM COMMUNICATION CONTACT	24
SG6 - GIS GENERAL INDICATOR	25
SG7 - NAD NAME AND ADDRESS	26
SG7 - LOC CURRENCIES	27
SG9 - DOC DOCUMENT/MESSAGE DETAILS	28
SG11 - TDT DETAILS OF TRANSPORT	29
SG12 - LIN LINE ITEM	30
SG12 - PIA ADDITIONAL PRODUCT ID	31
SG12 - IMD ITEM DESCRIPTION	32
SG12 - GIN GOODS IDENTITY NUMBER	33
SG13 - RFF REFERENCE	34
SG13 - DTM DATE/TIME/PERIOD	35
SG15 - QTY QUANTITY	36
SG15 - DTM DATE/TIME/PERIOD	37
SG16 - RFF REFERENCE	38
SG16 - DTM DATE/TIME/PERIOD	39
SG17 - SCC SCHEDULING CONDITIONS	40
SG18 - QTY QUANTITY	41
SG18 - DTM DATE/TIME/PERIOD	42
SG19 - RFF REFERENCE	43
SG19 - DTM DATE/TIME/PERIOD	44
SG20 - PAC PACKAGE	45
SG20 - QTY QUANTITY	46
SG22 - NAD NAME AND ADDRESS	47
SG23 - DOC DOCUMENT/MESSAGE DETAILS	48
UNT MESSAGE TRAILER	49
EXAMPLES	50-54

COMPARISON TO PREVIOUS ISSUE

Issue EDDF07 of 1 June 2005:

- Upgrade to UN/EDIFACT Code list D.04B
- Replacement of EDIFICE codes with standard codes.
- SG20 - PAC - DE 7065:
 - 'CN' Container replaced with 'CN' Container, not otherwise specified as transport equipment
 - 'PE' Pallet replaced with 'PX' Pallet

5 August 2003

- Example 4 Planning Forecast with Consignment Stock
- The buyer provides regular forecasts of 'nett' requirements was changed to 'gross' requirements.

Issue EDDF06 of 21 May 2003

- SG22 addition of Note : EDIFICE does not make use of the EDIFACT Mandatory SG27.
- SG6 GIS DE 7365 – replace qualifier 'ZZZ' with EDIFACT qualifier '94' Delivery point driven scheduling method
- EDIFIX 4.2 Technical upgrade; review and correction of examples

Issue EDDF06 of 13 November 2002 is based on UN/EDIFACT D98.B / Code List D01.A

- Addition of the following code value:
 - o SG12, LIN segment, CO C212, DE 7143 code 'SRV' EAN.UCC Global Trade Item Number
 - o SG12, PIA segment, CO C212, DE 7143 code 'SRV' EAN.UCC Global Trade Item Number
 - o SG15, QTY segment, CO C186, DE 6063 code '152' Consignment stock

Issue EDDF05, Publication date 29 May 2002 – addition of recommended set of DTM qualifiers

Issue EDDF05 is based on the DELFOR D.98B which includes the changes related to the DMR raised in EDDF04.

- SG15 occurrence increased to 99
- UNH DE 0054 Message release number : 98B
- UNH DE 0057 Association assigned code: EDDF05

Additional changes recorded in D.98B:

- SG12, IMD segment, addition of CO C272, DE 7081, DE 1131, DE 3055
- RFF segments addition of DE 1060

Release EDDF04 includes the changes that have been made to the issue 3 of the Delivery Schedule document endorsed by the EDIFICE Plenary on 9 April 1997. The changes are as follows:

- Recast from the 92.1 version of the UN/EDIFACT directory to the D.97A version,

- Addition of the following code values:

all DTM segments, DE 1153, codes '301' YMMDDHHMMZZZ
'303' CCYMMDDHHMMZZZ

SG1, RFF segment, DE 1153, codes	'GC'	Government contract number
	'PR'	Price quote number
SG12, LIN segment, DE 7143, codes	'DI'	Distributor's part number
	'MF'	Manufacturer's (producer's) article number
SG12, LIN segment, DE 3055, codes	'89'	Assigned by distributor
	'90'	Assigned by manufacturer
SG12, PIA segment, DE 7143, codes	'AA'	Product version number
	'CL'	Color number
	'CV'	Customs article number
	'DI'	Distributor's part number
	'MF'	Manufacturer's (producer's) article number
	'MN'	Model number
	'SG'	Standard group of products (mixed assortment)
	'SN'	Serial number
SG12, PIA segment, DE 3055, codes	'89'	Assigned by distributor
	'90'	Assigned by manufacturer
SG12, IMD segment, DE 7077, codes	'C'	Code (from industry code list)
	'F'	Free-form
SG13, RFF segment, DE 1153, codes	'GC'	Government contract number
	'PR'	Price quote number
SG15, DTM segment, DE 2005, code	'LSD'	Liability start date
SG18, QTY segment, DE 6063, codes	'18'	Previous quantity
	'21'	Order quantity
	'85'	Previous order quantity to be cancelled
	'94'	Substitutional quantity
SG19, RFF segment, DE 1153, code	'FDS'	Firm delivery schedule reference number,

- Addition of the following segment groups/segments:

SG1, DTM segment

SG3, RFF segment
SG6
SG7, LOC segment
SG11
SG12, GIN segment
SG13, DTM segment
SG16, DTM segment
SG19, DTM segment
SG20, QTY segment
SG22
SG23,

- Deletion of the following code values:

SG2, NAD segment, DE 3035, codes 'DP'
'FW'
'IV'
SG19, RFF segment, DE 1153, codes 'BO'
'CT',

- Deletion of the following segment groups/segments:

SG29
SG30,

- Usage changed for the following segment groups/segments/data elements:

BGM segment, CO C002, DE 3055, X to D
CO C106, DE 1255, X to A
SG1, RFF segment, CO C506, DE 1156, X to O
SG4, CTA segment, CO C056, DE 3412, A to D
SG12, LIN segment, CO C212, R to A
SG12, IMD segment, DE 7077, X to D
SG12, IMD segment, DE 7081, R to O
SG12, IMD segment, CO C273, X to D
SG13, RFF segment, CO C506, DE 1154, D to R
SG13, RFF segment, CO C506, DE 1156, D to O
SG20, PAC segment, DE 7224, O to N
SG20, PAC segment, CO C202, DE 3055, R to D,

- Where UN/ECE Recommendations are referenced the most commonly used codes have been identified,

- Alignment of segments and composite data elements to ensure conformance (data harmonization) across all EDIFICE Implementation Guidelines,

- Update of the REFERENCES and EXPLANATORY NOTES section to comply with the EDIFICE Standards for Documentation of Message Implementation Guidelines issue 3,

- Update of examples,

- Documentation adjustments resulting from the use of GEFEG's EdiFix Message Implementation Guidelines documentation tool,

- Correction of typographical errors.

EDIFICE FUNCTIONAL DEFINITION

The Delivery Schedule message (DELFOR) is defined as a message from a party who is planning the use or consumption of products to a party who has to plan for the supply of products. The message gives the requirements regarding details for short term delivery and/or medium to long term scheduling of products. The scheduling can be used to authorise manufacturing and/or the provision of materials. This is based on the terms and conditions defined in a blanket purchase order or contract and covers the liability commitments of the buyer.

Principles

The Delivery Schedule message may be used to:

- specify firm delivery dates and the quantities scheduled (using segment SCC, DE 4017 Delivery Plan Status Indicator coded as "Firm" (1))
- specify forecasted production requirements (using SCC, DE 4017 coded as "commitment for material and manufacturing" (2), "commitment for material" (3), or "planning/forecast" (4))
- define the aspects that guarantee the synchronisation between the supplying and receiving parties, thus allowing the supplier to plan for the resources necessary to fulfil the customer's requirements
- enable the operation of forecast-based Supplier Managed Inventory principles, in which the supplier is informed of the customer's minimum, maximum and actual inventory on hand and takes the responsibility for determining at what date and with what quantity to replenish the customer's stocks

This message will normally be used where trading partners have a stable trading environment, and multiple deliveries of stable product requirements exist. This does not mean flat or level requirements, but rather managed upside or downside fluctuations.

The EDIFICE guideline for DELFOR supports the delivery point driven scheduling method only.

This is when, for a given delivery point, a number of different products are to be delivered. This means that address information triggers product information.

EDIFICE strongly recommends usage restricted to a single delivery point.

The association to a previous Delivery Schedule message is given by referencing the appropriate document/message number. Each schedule is seen as the latest statement of requirements, replacing previous schedules if they existed.

REFERENCES

Refer to the document : Reference list for the EDIFICE message guidelines – Issue 1

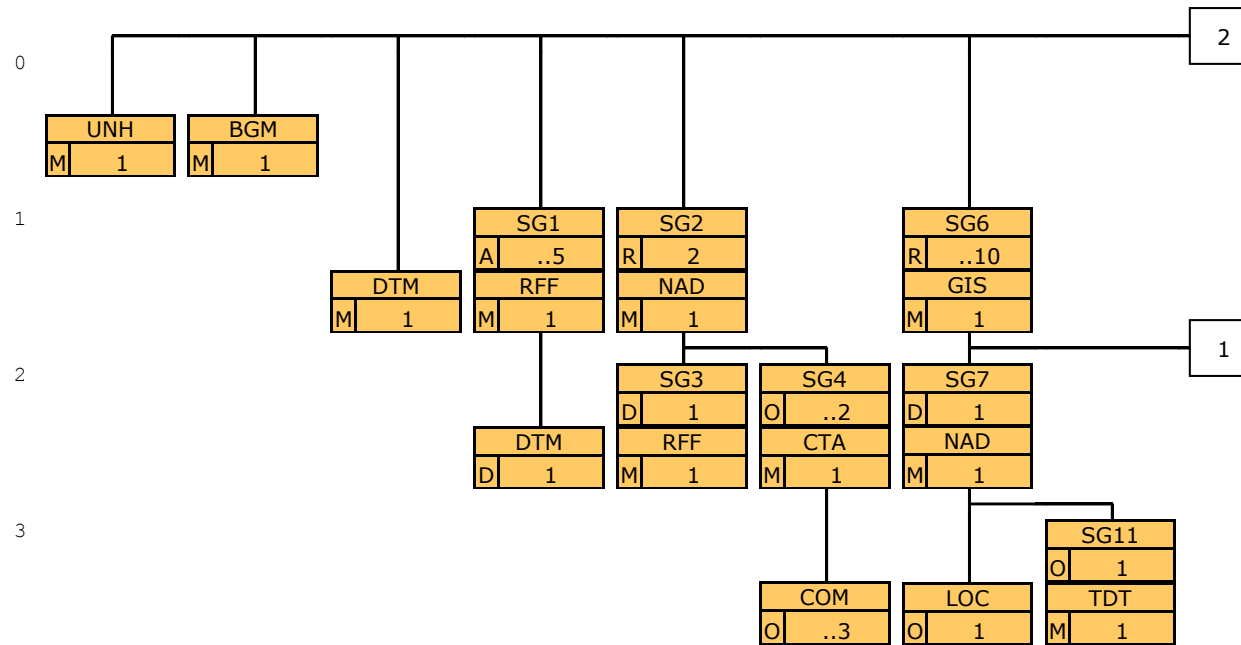
EXPLANATORY NOTES

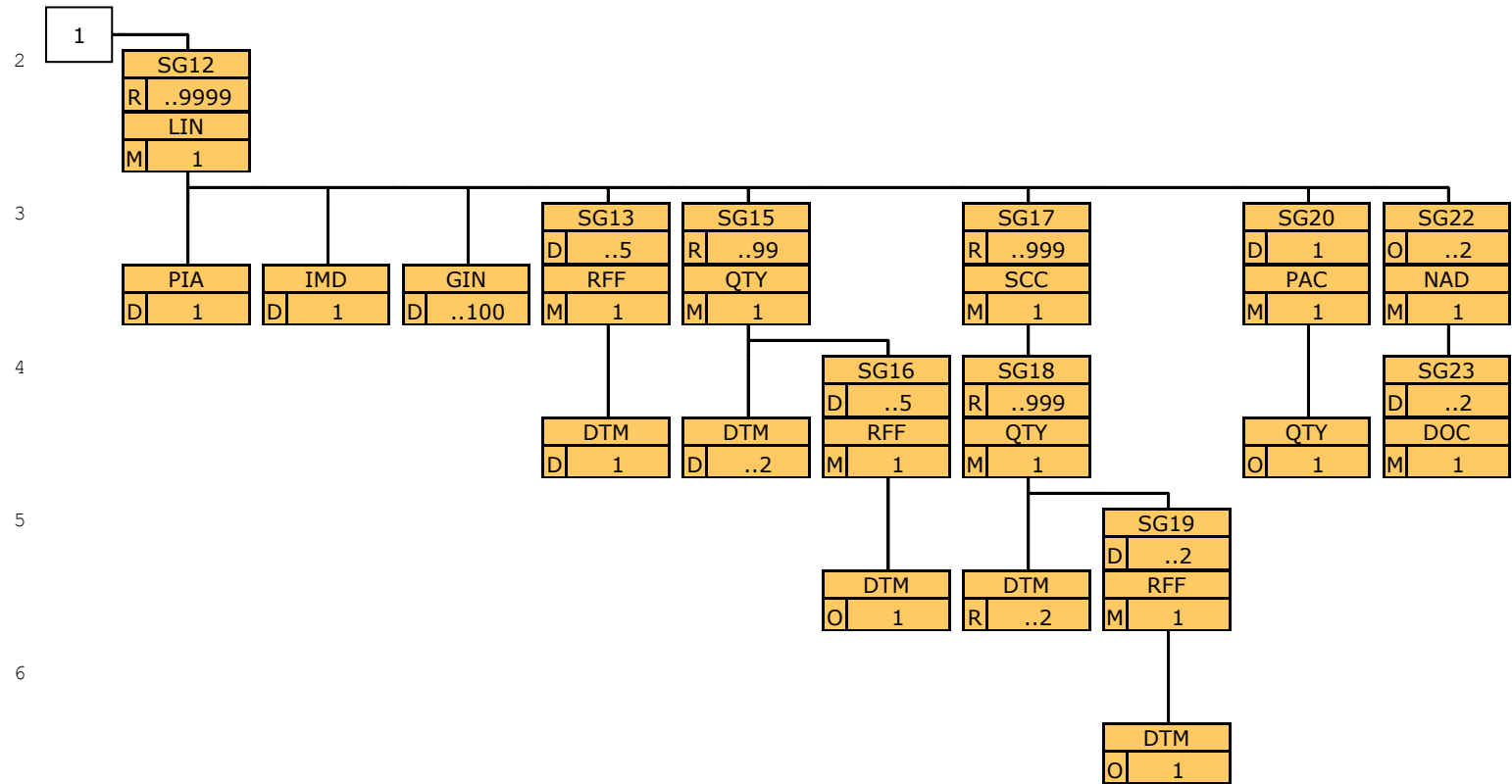
Refer to the document : Explanatory notes for the EDIFICE message guidelines – Issue 1

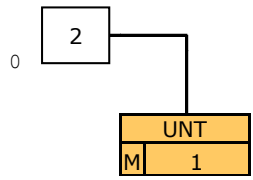
MESSAGE STRUCTURE CHART

UNH	Message header	M 1
BGM	Beginning of message	M 1
DTM	Date/time/period	M 1
SG1		A..5
RFF	Reference	M 1
DTM	Date/time/period	D 1
SG2		R 2
NAD	Name and address	M 1
SG3		D 1
RFF	Reference	M 1
SG4		O..2
CTA	Contact information	M 1
COM	Communication contact	O..3
SG6		R..10
GIS	General indicator	M 1
SG7		D 1
NAD	Name and address	M 1
LOC	Place/location identification	O 1
SG11		O 1
TDT	Details of transport	M 1
SG12		R..9999
LIN	Line item	M 1
PIA	Additional product id	D..10
IMD	Item description	D 1
GIN	Goods identity number	D..100
SG13		D..5
RFF	Reference	M 1
DTM	Date/time/period	D 1
SG15		R..99
QTY	Quantity	M 1
DTM	Date/time/period	D..2
SG16		D..5
RFF	Reference	M 1
DTM	Date/time/period	O 1
SG17		R..999
SCC	Scheduling conditions	M 1
SG18		R..999
QTY	Quantity	M 1
DTM	Date/time/period	R..2
SG19		D..2
RFF	Reference	M 1
DTM	Date/time/period	O 1
SG20		D 1
PAC	Package	M 1
QTY	Quantity	O 1
SG22		O..2
NAD	Name and address	M 1
SG23		D..2
DOC	Document/message details	M 1
UNT	Message trailer	M 1

BRANCHING DIAGRAM







SEGMENT GROUPS/SEGMENTS DESCRIPTION

UNH Message header

Function: A service segment heading, and uniquely identifying the message.
Usage : M1

BGM Beginning of message

Function: A segment uniquely identifying the message by means of its coded name, number and function.
Usage : M1

DTM Date/time/period

Function: A segment specifying the date/time of creation of the message.
Usage : M1

SG1 RFF-DTM

Function: A group of segments referencing documents and their dates, relating to the whole message.
Usage : A..5
Notes : Reference segments specifying contract or previous delivery schedule information should be present, preferably at header level. If this information is given at detail level, it must not appear here.
The DTM segment must be sent where local law requires the date of a reference document to be sent.

RFF Reference

Function: A segment specifying a document reference number and its appropriate line number.
Usage : M1

DTM Date/time/period

Function: A segment specifying the date/time of the reference document.
Usage : D1

SG2 NAD-SG3-SG4

Function: A group of segments identifying the parties involved and their associated information, relevant to the whole message.
Usage : R2
Notes : SG3 is used if EC regulations and/or country law requires reference numbers to be sent.

NAD Name and address

Function: A segment identifying the function and coded identification, name and address of a party involved.
Usage : M1

SG3 RFF

Function: A group of segments giving references relating to the identified buying party involved.
Usage : D1
Notes :

RFF Reference

Function: A segment specifying a company specific reference.
Usage : M1

SG4 CTA-COM

Function: A group of segments giving contact details of the specific person or department within the identified buying party involved, to whom communication should be directed.
Usage : O..2
Notes : This segment group will only be used under the NAD identifying the buyer.

CTA Contact information

Function: A segment identifying a person or department, and their function.
Usage : M1

COM Communication contact

Function: A segment identifying a communications type and number.
Usage : 0..3

SG6 GIS-SG7-SG12

Function: A group of segments indicating the scheduling method used, identifying the delivery points and related information, and providing inventory and delivery details of the individual line items i.e. ordered/forecasted products.
Usage : R..10
Notes : SG7 must be sent if a firm delivery plan is specified in SG17.

GIS General indicator

Function: A segment indicating that the delivery point scheduling method is used.
Usage : M1

SG7 NAD-LOC-SG11

Function: A group of segments identifying a delivery point and its associated information.
Usage : D1
Notes :

NAD Name and address

Function: A segment identifying the coded identification, name and address of the delivery point.
Usage : M1

LOC Place/location identification

Function: A segment identifying a specific location or place at the delivery point.
Usage : O1

SG11 TDT

Function: A group of segments specifying transport details.
Usage : O1
Notes : Used only if details of transport need to be conveyed.

TDT Details of transport

Function: A segment specifying for the main-carriage stage the mode of transport and the carrier information.
Usage : M1

SG12 LIN-PIA-IMD-GIN-SG13-SG15-SG17-SG20-SG22

Function: A group of segments providing inventory, delivery details and liability for the individual line items.
Usage : R..9999
Notes : The PIA segment is dependent on whether the primary reference to the line item being ordered/forecasted is insufficient to identify the item.
The IMD segment is used to provide an additional description of the primary reference to the line item being ordered/forecasted. It may also be used for items that can not be identified by a code or article number.
The GIN segment is used to provide identity numbers to be applied to the line item.
SG13 is used to define references which must be associated with specific line items.
SG20 is used to specify any alternative packaging methods which have been agreed between trading partners.
The measure unit qualifier (DE 6411) must be agreed between trading partners and explicitly identified consistently across SG15 and SG18.

LIN Line item

Function: A segment identifying a line item by its item number, and agreed to be the primary reference number between the buyer and seller.
The segment also carries a sequence number assigned to the line item within the message.
Usage : M1

PIA Additional product id

Function: A segment providing additional identification numbers for the line item.
Usage : D..10

IMD Item description

Function: A segment specifying ship to stock or ship to line quality and/or an additional description in clear or coded form, for the line item.
Usage : D1

GIN Goods identity number

Function: A segment providing identity numbers to be applied to the line item.
Usage : D..100

SG13 RFF-DTM

Function: A group of segments specifying references for the line item.
Usage : D..5
Notes : Where the RFF at header level could not be used to specify the appropriate reference number it should appear here. Where the header level RFF gives the previous delivery schedule and/or contract information it must not appear here.
The DTM segment must be sent where local law requires the date of a reference document to be sent.

RFF Reference

Function: A segment specifying a document reference number and its appropriate line number.
Usage : M1

DTM Date/time/period

Function: A segment specifying the date/time of the reference document.
Usage : D1

SG15 QTY-DTM-SG16

Function: A group of segments specifying non-schedule related quantity information for the line item.
Usage : R..99
Notes : This matrix shows how QTY, DTM and RFF segments are used.

	QTY DE 6063 -----	DTM DE 2005 -----	RFF DE 1153 -----
Cumulative quantity	3	-	-
Received quantity	48	50	AAK/PK/SRN/TN
Quantity withdrawn	58	158/159	IV/TN (O) *
Committed quantity	66	LSD (O) *	-
Cumulative quantity received	70	-	-
Backorder quantity	83	-	-
Minimum inventory	97	158/159 (O) *	-
Maximum inventory	98	158/159 (O) *	-
Actual stock	145	366	-
Consignment stock	152	366	-

* Usage (O) Optional

QTY Quantity

Function: A segment specifying a quantity.
Usage : M1

DTM Date/time/period

Function: A segment specifying a date/time related to the quantity.
Usage : D..2

SG16 RFF-DTM

Function: A group of segments specifying references for quantities received or consumed from inventory.
Usage : D..5
Notes :

RFF Reference

Function: A segment specifying a document reference number and its appropriate line number, identifying the quantity received or consumed from inventory.
Usage : M1

DTM Date/time/period

Function: A segment specifying the date/time of the reference document.
Usage : O1

SG17 SCC-SG18

Function: A group of segments specifying schedule related quantity information for the line item.
Usage : R..999
Notes : Trading partners have to agree to specifying either a single SCC segment group relating to all following QTY-DTM segment groups or one SCC segment group for each QTY-DTM segment group. The same method must be used consistently throughout the whole message.

SCC Scheduling conditions

Function: A segment specifying information on the liability commitment of the buyer to this schedule.
Usage : M1

SG18 QTY-DTM-SG19

Function: A group of segments specifying the delivery dates and quantities scheduled.
Usage : R..999
Notes : SG19 is only used when it is necessary to give different references for each delivery.

QTY Quantity

Function: A segment specifying a quantity.
Usage : M1

DTM Date/time/period

Function: A segment specifying the corresponding time-frame i.e. horizon start and end date/time or discrete date/time of the quantity.
Usage : R..2

SG19 RFF-DTM

Function: A group of segments providing references for the quantity.
Usage : D..2
Notes :

RFF Reference

Function: A segment specifying a document reference number and its appropriate line number.
Usage : M1

DTM Date/time/period

Function: A segment specifying the date/time of the reference document.
Usage : O1

SG20 PAC-QTY

Function: A group of segments specifying product packaging information for the line item.
Usage : D1
Notes :

PAC Package

Function: A segment specifying the product package type.
Usage : M1

QTY Quantity

Function: A segment specifying the number of products contained in the package type.
Usage : O1

SG22 NAD-SG23

Function: A group of segments identifying the parties involved and their associated information, for the line item.
Usage : O..2
Notes : SG23 is only used when DE 3055 in NAD = 'BY'
EDIFICE does not make use of the EDIFACT mandatory SG27.

NAD Name and address

Function: A segment identifying the buyer as the party requesting the certificates, or identifying the manufacturer's code, for the line item.
Usage : M1

SG23 DOC

Function: A group of segments specifying the certificates.
Usage : D..2
Notes :

DOC Document/message details

Function: A segment specifying a requested certificate
Usage : M1

UNT Message trailer

Function: A service segment ending, and providing information for checking the completeness of a message.
Usage : M1

SEGMENT DETAILS



UNH **Message header**

Function: A service segment heading, and uniquely identifying the message.

Usage : M1

Notes : Refer to EDIFICE Utilisation of the UN/EDIFACT Service Segments, Issue EDSS04.

Ref.	Rep.	Name		EDIFICE Utilisation
0062	an..14	M MESSAGE REFERENCE NUMBER	M	Transmission message count from 1
S009		M MESSAGE IDENTIFIER	M	
0065	an..6	M Message type identifier	M	DELFOR = Delivery schedule message
0052	an..3	M Message version number	M	D = Draft version/UN/EDIFACT Directory
0054	an..3	M Message release number	M	98B = Release 1998 - B
0051	an..2	M Controlling agency	M	UN = UN/CEFACT
0057	an..6	C Association assigned code	R	EDDF07 = Delivery Schedule Message Issue EDDF07
0068	an..35	C COMMON ACCESS REFERENCE	N	
S010		C STATUS OF THE TRANSFER	N	
0070	n..2	M Sequence of transfers	N	
0073	a1	C First/last sequence message transfer indication	N	

BGM Beginning of message

Function: A segment uniquely identifying the message by means of its coded name, number and function.

Usage : M1

Notes : When the content of DE 1001 is not '241' Delivery Schedule, this code defines a specific business scenario assigned by EDIFICE - in which case DE 3055 must be set to '8'.

Ref.	Rep.	Name		EDIFICE Utilisation
C002		C DOCUMENT/MESSAGE NAME	R	241 = Delivery schedule The following values for DE 1001 have currently been assigned by EDIFICE. A = Planning forecast. B = Planning forecast with traditional purchase order cycle. C = Planning forecast and separate material release D = Planning forecast combined with embedded release E = Planning forecast with consignment stock. F = Planning forecast with separate calloff, and consignment. G = Forecast-based Supplier-Managed Inventory H = Forecast-based Supplier-Managed Inventory with consignment I = Consumption-based Supplier-Managed Inventory J = Distributor forecasting and supply K = Supplier-Managed Inventory in third party warehouse - buyer-owned inventory L = SMI in third party warehouse - seller-owned inventory (i.e. consignment) M = Contract manufacturing - Prime contractor procures components N = Contract manufacturing - Contract manufacturer procures components O = Consignment inventory in third party warehouse P = Response to forecast.
1001	an..3	C Document/message name, coded	R	
1131	an..3	C Code list qualifier	N	
3055	an..3	C Code list responsible agency, coded	D	8 = EDIFICE
1000	an..35	C Document/message name	N	
C106		C DOCUMENT/MESSAGE IDENTIFICATION	R	
1004	an..35	C Document/message number	R	
1056	an..9	C Version	N	
1060	an..6	C Revision number	N	
1225	an..3	C MESSAGE FUNCTION, CODED	A	9 = Original
4343	an..3	C RESPONSE TYPE, CODED	N	

DTM Date/time/period

Function: A segment specifying the date/time of creation of the message.

Usage : M1

Notes :

Ref.	Rep.	Name		EDIFICE Utilisation
C507		M DATE/TIME/PERIOD	M	
2005	an..3	M Date/time/period qualifier	M	137 = Document/message date/time Date when the document is created
2380	an..35	C Date/time/period	R	
2379	an..3	C Date/time/period format qualifier	R	102 = CCYMMDD 203 = CCYMMDDHHMM 303 = CCYMMDDHHMMZZZ ZZZ = Time zone 304 = CCYMMDDHHMMSSZZZ ZZZ = Time zone X03 = CCYMMDDHHMMZZZZZ (*) ZZZZZ = Time zone X04 = CCYMMDDHHMMSSZZZZZ (*) ZZZZZ = Time zone (*) EDIFICE code

SG1 RFF-DTM

RFF Reference

Function: A segment specifying a document reference number and its appropriate line number.

Usage : M1

Notes :

Ref.	Rep.	Name		EDIFICE Utilisation
C506		M REFERENCE	M	AAD = Contract addendum number Number assigned by the issuer of a contract addendum. ALM = Previous delivery schedule number BO = Blanket order number CT = Contract number GC = Government contract number PR = Price quote number
1153	an..3	M Reference qualifier	M	
1154	an..35	C Reference number	R	
1156	an..6	C Line number	O	
4000	an..35	C Reference version number	N	
1060	an..6	C Revision number	N	

SG1 RFF-DTM

DTM Date/time/period

Function: A segment specifying the date/time of the reference document.

Usage : D 1

Notes :

Ref.	Rep.	Name	EDIFICE Utilisation
C507		M DATE/TIME/PERIOD	M
2005	an..3	M Date/time/period qualifier	M 171 = Reference date/time
2380	an..35	C Date/time/period	R
2379	an..3	C Date/time/period format qualifier	R
			102 = CCYMMDD
			203 = CCYMMDDHHMM
			303 = CCYMMDDHHMMZZZ
			ZZZ = Time zone
			304 = CCYMMDDHHMMSSZZZ
			ZZZ = Time zone
			X03 = CCYMMDDHHMMZZZZZ (*)
			ZZZZZ = Time zone
			X04 = CCYMMDDHHMMSSZZZZZ (*)
			ZZZZZ = Time zone
			(*) EDIFICE code

SG2 NAD-SG3-SG4

NAD Name and address

Function: A segment identifying the function and coded identification, name and address of a party involved.

Usage : M1

Notes : It is advised that the party identification CO C082 be used. When CO C082 cannot be used it is recommended to use the structured name and address CO C080 through DE 3207 rather than the unstructured one CO C058.

Ref.	Rep.	Name	EDIFICE Utilisation	
3035	an..3	M PARTY QUALIFIER	M	BY = Buyer SE = Seller
C082		C PARTY IDENTIFICATION DETAILS	A	
3039	an..35	M Party identification	M	
1131	an..3	C Code list qualifier	N	
3055	an..3	C Code list responsible agency, coded	R	9 = EAN (International Article Numbering association) 16 = DUNS (Dun & Bradstreet) 91 = Assigned by seller or seller's agent 92 = Assigned by buyer or buyer's agent
C058		C NAME AND ADDRESS	D	
3124	an..35	M Name and address line	M	
3124	an..35	C Name and address line	O	
3124	an..35	C Name and address line	O	
3124	an..35	C Name and address line	O	
3124	an..35	C Name and address line	O	
C080		C PARTY NAME	D	
3036	an..35	M Party name	M	
3036	an..35	C Party name	O	
3036	an..35	C Party name	O	
3036	an..35	C Party name	O	
3036	an..35	C Party name	O	
3045	an..3	C Party name format, coded	N	
C059		C STREET	D	
3042	an..35	M Street and number/p.o. box	M	
3042	an..35	C Street and number/p.o. box	O	
3042	an..35	C Street and number/p.o. box	O	
3042	an..35	C Street and number/p.o. box	O	
3164	an..35	C CITY NAME	D	
3229	an..9	C COUNTRY SUB-ENTITY IDENTIFICATION	D	
3251	an..9	C POSTCODE IDENTIFICATION	D	
3207	an..3	C COUNTRY, CODED	D	Use ISO 3166, 2 alpha code

SG3 RFF**RFF Reference**

Function: A segment specifying a company specific reference.

Usage : M1

Notes :

Ref.	Rep.	Name		EDIFICE Utilisation
C506		M REFERENCE	M	VA = VAT registration number GN = Government reference number
1153	an..3	M Reference qualifier	M	
1154	an..35	C Reference number	R	
1156	an..6	C Line number	N	
4000	an..35	C Reference version number	N	
1060	an..6	C Revision number	N	

SG4 CTA-COM**CTA Contact information**

Function: A segment identifying a person or department, and their function.

Usage : M1

Notes :

Ref.	Rep.	Name	EDIFICE Utilisation	
3139	an..3	C CONTACT FUNCTION, CODED	R	PD = Purchasing contact SC = Schedule contact
C056		C DEPARTMENT OR EMPLOYEE DETAILS	R	If a code is available use DE 3413, otherwise use DE 3412.
3413	an..17	C Department or employee identification	D	
3412	an..35	C Department or employee	D	

SG4 CTA-COM**COM Communication contact**

Function: A segment identifying a communications type and number.

Usage : 0..3

Notes :

Ref.	Rep.	Name		EDIFICE Utilisation
C076		M COMMUNICATION CONTACT	M	
3148	an..512	M Communication number	M	
3155	an..3	M Communication channel qualifier	M	EM = Electronic mail FX = Telefax TE = Telephone

SG6 GIS-SG7-SG12**GIS General indicator**

Function: A segment indicating that the delivery point scheduling method is used.

Usage : M1

Notes : This dummy segment defines the use of the 'Delivery point driven' method.

Ref.	Rep.	Name		EDIFICE Utilisation
C529		M PROCESSING INDICATOR	M	94 = Delivery point driven scheduling method
7365	an..3	M Processing indicator, coded	M	
1131	an..3	C Code list qualifier	N	
3055	an..3	C Code list responsible agency, coded	N	
7187	an..17	C Process type identification	N	

SG7 NAD-LOC-SG11

NAD Name and address

Function: A segment identifying the coded identification, name and address of the delivery point.

Usage : M1

Notes :

Ref.	Rep.	Name	EDIFICE Utilisation	
3035	an..3	M PARTY QUALIFIER	M	DP = Delivery party Delivery point 9 = EAN (International Article Numbering association) 16 = DUNS (Dun & Bradstreet) 91 = Assigned by seller or seller's agent 92 = Assigned by buyer or buyer's agent
C082		C PARTY IDENTIFICATION DETAILS	A	
3039	an..35	M Party identification	M	
1131	an..3	C Code list qualifier	N	
3055	an..3	C Code list responsible agency, coded	R	
C058		C NAME AND ADDRESS	D	
3124	an..35	M Name and address line	M	
3124	an..35	C Name and address line	O	
3124	an..35	C Name and address line	O	
3124	an..35	C Name and address line	O	
C080		C PARTY NAME	D	
3036	an..35	M Party name	M	
3036	an..35	C Party name	O	
3036	an..35	C Party name	O	
3036	an..35	C Party name	O	
3036	an..35	C Party name	O	
3045	an..3	C Party name format, coded	N	
C059		C STREET	D	
3042	an..35	M Street and number/p.o. box	M	
3042	an..35	C Street and number/p.o. box	O	
3042	an..35	C Street and number/p.o. box	O	
3042	an..35	C Street and number/p.o. box	O	
3164	an..35	C CITY NAME	D	
3229	an..9	C COUNTRY SUB-ENTITY IDENTIFICATION	D	
3251	an..9	C POSTCODE IDENTIFICATION	D	
3207	an..3	C COUNTRY, CODED	D	Use ISO 3166, 2 alpha code

SG7 NAD-LOC-SG11

LOC Place/location identification

Function: A segment identifying a specific location or place at the delivery point.

Usage : 01

Notes :

Ref.	Rep.	Name	EDIFICE Utilisation	
3227	an..3	M PLACE/LOCATION QUALIFIER	M	88 = Place of receipt It is advised that DE 3225 be used together with DE 3055 rather than DE 3224.
C517		C LOCATION IDENTIFICATION	R	
3225	an..25	C Place/location identification	A	92 = Assigned by buyer or buyer's agent
1131	an..3	C Code list qualifier	N	
3055	an..3	C Code list responsible agency, coded	D	
3224	an..70	C Place/location	D	
C519		C RELATED LOCATION ONE IDENTIFICATION	N	
3223	an..25	C Related place/location one identification	N	
1131	an..3	C Code list qualifier	N	
3055	an..3	C Code list responsible agency, coded	N	
3222	an..70	C Related place/location one	N	
C553		C RELATED LOCATION TWO IDENTIFICATION	N	
3233	an..25	C Related place/location two identification	N	
1131	an..3	C Code list qualifier	N	
3055	an..3	C Code list responsible agency, coded	N	
3232	an..70	C Related place/location two	N	
5479	an..3	C RELATION, CODED	N	

SG11 TDT

TDT Details of transport

Function: A segment specifying for the main-carriage stage the mode of transport and the carrier information.

Usage : M1

Notes :

Ref.	Rep.	Name		EDIFICE Utilisation
8051	an..3	M TRANSPORT STAGE QUALIFIER	M	20 = Main-carriage transport
8028	an..17	C CONVEYANCE REFERENCE NUMBER	N	
C220		C MODE OF TRANSPORT	R	
8067	an..3	C Mode of transport, coded	R	Use the following codes from UN/ECE Recommendation no.19: 1 = Maritime transport 2 = Rail transport 3 = Road transport 4 = Air transport 5 = Mail 6 = Multimodal transport
8066	an..17	C Mode of transport	N	
C228		C TRANSPORT MEANS	N	
8179	an..8	C Type of means of transport identification	N	
8178	an..17	C Type of means of transport	N	
C040		C CARRIER	O	
3127	an..17	C Carrier identification	A	Mutually defined code
1131	an..3	C Code list qualifier	N	
3055	an..3	C Code list responsible agency, coded	A	3 = IATA (International Air Transport Association) 9 = EAN (International Article Numbering association) 11 = Lloyd's register of shipping 16 = DUNS (Dun & Bradstreet) 91 = Assigned by seller or seller's agent 92 = Assigned by buyer or buyer's agent 166 = US, National Motor Freight Classification Association
3128	an..35	C Carrier name	D	Used if no coded name is exchanged in DE 3127
8101	an..3	C TRANSIT DIRECTION, CODED	N	
C401		C EXCESS TRANSPORTATION INFORMATION	N	
8457	an..3	M Excess transportation reason, coded	N	
8459	an..3	M Excess transportation responsibility, coded	N	
7130	an..17	C Customer authorization number	N	
C222		C TRANSPORT IDENTIFICATION	N	
8213	an..9	C Id. of means of transport identification	N	
1131	an..3	C Code list qualifier	N	
3055	an..3	C Code list responsible agency, coded	N	
8212	an..35	C Id. of the means of transport	N	
8453	an..3	C Nationality of means of transport, coded	N	
8281	an..3	C TRANSPORT OWNERSHIP, CODED	N	

SG12 LIN-PIA-IMD-GIN-SG13-SG15-SG17-SG20-SG22

LIN Line item

Function: A segment identifying a line item by its item number, and agreed to be the primary reference number between the buyer and seller.

The segment also carries a sequence number assigned to the line item within the message.

Usage : M1

Notes : For a line item referring to a service which has no coded identification, the primary identification is found in segment IMD, rather than in CO C212.

Ref.	Rep.	Name		EDIFICE Utilisation
1082	an..6	C LINE ITEM NUMBER	R	It is required to assign a number to the line items within a message. The number is assigned by the sender of the message. The first line item within a message will be numbered 1 and further line items will be incremented by 1 for each new line. Primary reference BP = Buyer's part number DI = Distributor's part number (*) EN = International Article Numbering Association (EAN) MF = Manufacturer's (producer's) article number SRV = EAN.UCC Global Trade Item Number UP = UPC (Universal product code) VP = Vendor's (seller's) part number (*) EDIFICE code 9 = EAN (International Article Numbering association) 89 = Assigned by distributor 90 = Assigned by manufacturer 91 = Assigned by seller or seller's agent 92 = Assigned by buyer or buyer's agent 113 = US, UCC (Uniform Code Council)
1229	an..3	C ACTION REQUEST/NOTIFICATION, CODED	N	
C212		C ITEM NUMBER IDENTIFICATION	A	
7140	an..35	C Item number	R	
7143	an..3	C Item number type, coded	R	
1131	an..3	C Code list qualifier	N	
3055	an..3	C Code list responsible agency, coded	R	
C829		C SUB-LINE INFORMATION	N	
5495	an..3	C Sub-line indicator, coded	N	
1082	an..6	C Line item number	N	
1222	n..2	C CONFIGURATION LEVEL	N	
7083	an..3	C CONFIGURATION, CODED	N	

SG12 LIN-PIA-IMD-GIN-SG13-SG15-SG17-SG20-SG22**PIA Additional product id**

Function: A segment providing additional identification numbers for the line item.

Usage : D 1

Notes : The 5 internal repetitions of CO C212 may be used, but EDIFICE recommends to only use the first occurrence.

Ref.	Rep.	Name		EDIFICE Utilisation
4347	an..3	M PRODUCT ID. FUNCTION QUALIFIER	M	1 = Additional identification AA = Product version number Release number of a product BP = Buyer's part number CL = Color number CV = Customs article number DI = Distributor's part number (*) DR = Drawing revision number DW = Drawing EC = Engineering change level EN = International Article Numbering Association (EAN) GS = General specification number MF = Manufacturer's (producer's) article number MN = Model number SG = Standard group of products (mixed assortment) SN = Serial number SRV = EAN.UCC Global Trade Item Number UP = UPC (Universal product code) VP = Vendor's (seller's) part number VX = Vendor specification number (*) EDIFICE code
C212		M ITEM NUMBER IDENTIFICATION	M	
7140	an..35	C Item number	R	
7143	an..3	C Item number type, coded	R	
1131	an..3	C Code list qualifier	N	
3055	an..3	C Code list responsible agency, coded	R	
C212		C ITEM NUMBER IDENTIFICATION	O	
7140	an..35	C Item number	R	
7143	an..3	C Item number type, coded	R	
1131	an..3	C Code list qualifier	N	
3055	an..3	C Code list responsible agency, coded	R	
C212		C ITEM NUMBER IDENTIFICATION	O	As for first CO C212
7140	an..35	C Item number	R	
7143	an..3	C Item number type, coded	R	
1131	an..3	C Code list qualifier	N	
3055	an..3	C Code list responsible agency, coded	R	
C212		C ITEM NUMBER IDENTIFICATION	O	As for first CO C212
7140	an..35	C Item number	R	
7143	an..3	C Item number type, coded	R	
1131	an..3	C Code list qualifier	N	
3055	an..3	C Code list responsible agency, coded	R	
C212		C ITEM NUMBER IDENTIFICATION	O	As for first CO C212
7140	an..35	C Item number	R	
7143	an..3	C Item number type, coded	R	
1131	an..3	C Code list qualifier	N	
3055	an..3	C Code list responsible agency, coded	R	

SG12 LIN-PIA-IMD-GIN-SG13-SG15-SG17-SG20-SG22
IMD Item description

Function: A segment specifying ship to stock or ship to line quality and/or an additional description in clear or coded form, for the line item.

Usage : D1

Notes :

Ref.	Rep.	Name		EDIFICE Utilisation
7077	an..3	C ITEM DESCRIPTION TYPE, CODED	D	C = Code (from industry code list) F = Free-form
C272		C ITEM CHARACTERISTIC	O	
7081	an..3	C Item characteristic, coded	R	3 = Ship to stock 26 = Ship to line
1131	an..3	C Code list qualifier	N	
3055	an..3	C Code list responsible agency, coded	N	
C273		C ITEM DESCRIPTION	D	Use DE 7009 for a coded description. If no code is available use DE 7008 instead.
7009	an..17	C Item description identification	A	
1131	an..3	C Code list qualifier	N	
3055	an..3	C Code list responsible agency, coded	N	
7008	an..256	C Item description	D	
7008	an..256	C Item description	O	
3453	an..3	C Language, coded	N	
7383	an..3	C SURFACE/LAYER INDICATOR, CODED	N	

SG12 LIN-PIA-IMD-GIN-SG13-SG15-SG17-SG20-SG22**GIN Goods identity number**

Function: A segment providing identity numbers to be applied to the line item.

Usage : D..100

Notes :

Ref.	Rep.	Name	EDIFICE Utilisation	
7405	an..3	M IDENTITY NUMBER QUALIFIER	M	BN = Serial number The first DE 7402 in the composite data element is the start of the consecutively numbered range, the second DE 7402 indicates the end of the range. If there is no range only the first DE 7402 is used. If the identity numbers are not sequential and part of a series (e.g. 1,3,10) then a separate CO C208 and DE 7402 must be used for each identity number.
C208		M IDENTITY NUMBER RANGE	M	
7402	an..35	M Identity number	M	As for first CO C208
7402	an..35	C Identity number	D	
C208		C IDENTITY NUMBER RANGE	O	As for first CO C208
7402	an..35	M Identity number	M	
7402	an..35	C Identity number	D	As for first CO C208
C208		C IDENTITY NUMBER RANGE	O	
7402	an..35	M Identity number	M	As for first CO C208
7402	an..35	C Identity number	D	
C208		C IDENTITY NUMBER RANGE	O	As for first CO C208
7402	an..35	M Identity number	M	
7402	an..35	C Identity number	D	As for first CO C208
C208		C IDENTITY NUMBER RANGE	O	
7402	an..35	M Identity number	M	As for first CO C208
7402	an..35	C Identity number	D	

SG13 RFF-DTM**RFF Reference**

Function: A segment specifying a document reference number and its appropriate line number.

Usage : M1

Notes :

Ref.	Rep.	Name		EDIFICE Utilisation
C506		M REFERENCE	M	AAD = Contract addendum number Number assigned by the issuer of a contract addendum ALM = Previous delivery schedule number BO = Blanket order number CT = Contract number GC = Government contract number PR = Price quote number
1153	an..3	M Reference qualifier	M	
1154	an..35	C Reference number	R	
1156	an..6	C Line number	O	
4000	an..35	C Reference version number	N	
1060	an..6	C Revision number	N	

SG13 RFF-DTM

DTM Date/time/period

Function: A segment specifying the date/time of the reference document.

Usage : D 1

Notes :

Ref.	Rep.	Name		EDIFICE Utilisation
C507		M DATE/TIME/PERIOD	M	
2005	an..3	M Date/time/period qualifier	M	171 = Reference date/time
2380	an..35	C Date/time/period	R	
2379	an..3	C Date/time/period format qualifier	R	102 = CCYMMDD 203 = CCYMMDDHHMM 303 = CCYMMDDHHMMZZZ ZZZ = Time zone 304 = CCYMMDDHHMMSSZZZ ZZZ = Time zone X03 = CCYMMDDHHMMZZZZ (*) ZZZZ = Time zone X04 = CCYMMDDHHMMSSZZZZ (*) ZZZZ = Time zone (*) EDIFICE code

SG15 QTY-DTM-SG16

QTY Quantity

Function: A segment specifying a quantity.
 Usage : M1
 Notes :

Ref.	Rep.	Name		EDIFICE Utilisation
C186		M QUANTITY DETAILS	M	
6063	an..3	M Quantity qualifier	M	3 = Cumulative quantity This is the sum of the quantities for this line item in the QTY segment in SG18. 48 = Received quantity 58 = Quantity withdrawn Quantity consumed from inventory. 66 = Committed quantity Liability quantity as defined in a contractual agreement. 70 = Cumulative quantity received 83 = Backorder quantity Quantity previously requested for delivery before current date and not yet fulfilled. 97 = Minimum inventory 98 = Maximum inventory 145 = Actual stock Inventory quantity - Customer owned 152 = Consignment stock Supplier owned
6060	n..15	M Quantity	M	
6411	an..3	C Measure unit qualifier	R	Use the following codes from UN/ECE Recommendation no.20, Codes for Units of Measurement: CLT = centilitre CMT = centimetre GRM = gram KGM = kilogram KMT = kilometre (*) LTR = litre MGM = milligram MMT = millimetre MTK = square metre MTQ = cubic metre MTR = metre PCE = piece (*) (*) EDIFICE code, not included in UN/ECE Recommendation No.20 Other codes should be previously agreed between trading partners.

SG15 QTY-DTM-SG16

DTM Date/time/period

Function: A segment specifying a date/time related to the quantity.

Usage : D..2

Notes :

Ref.	Rep.	Name		EDIFICE Utilisation
C507		M DATE/TIME/PERIOD	M	
2005	an..3	M Date/time/period qualifier	M	50 = Goods receipt date/time 158 = Horizon start date 159 = Horizon end date 366 = Inventory report date LSD = Liability start date (*) Date when the customer begins its liability commitment to the supplier for the referenced part number in the forecast. (*) EDIFICE code
2380	an..35	C Date/time/period	R	
2379	an..3	C Date/time/period format qualifier	R	102 = CCYYMMDD 203 = CCYYMMDDHHMM 303 = CCYYMMDDHHMMZZZ ZZZ = Time zone 304 = CCYYMMDDHHMMSSZZZ ZZZ = Time zone X03 = CCYYMMDDHHMMZZZZZ (*) ZZZZZ = Time zone X04 = CCYYMMDDHHMMSSZZZZZ (*) ZZZZZ = Time zone (*) EDIFICE code

SG16 RFF-DTM**RFF Reference**

Function: A segment specifying a document reference number and its appropriate line number, identifying the quantity received or consumed from inventory.

Usage : M1

Notes :

Ref.	Rep.	Name		EDIFICE Utilisation
C506		M REFERENCE	M	AAK = Despatch advice number IV = Invoice number PK = Packing list number SRN = Shipment reference number TN = Transaction reference number
1153	an..3	M Reference qualifier	M	
1154	an..35	C Reference number	R	
1156	an..6	C Line number	O	
4000	an..35	C Reference version number	N	
1060	an..6	C Revision number	N	

SG16 RFF-DTM**DTM Date/time/period**

Function: A segment specifying the date/time of the reference document.

Usage : 01

Notes :

Ref.	Rep.	Name		EDIFICE Utilisation
C507		M DATE/TIME/PERIOD	M	
2005	an..3	M Date/time/period qualifier	M	171 = Reference date/time
2380	an..35	C Date/time/period	R	
2379	an..3	C Date/time/period format qualifier	R	102 = CCYMMDD 203 = CCYMMDDHHMM 303 = CCYMMDDHHMMZZZ ZZZ = Time zone 304 = CCYMMDDHHMMSSZZZ ZZZ = Time zone X03 = CCYMMDDHHMMZZZZ (*) ZZZZ = Time zone X04 = CCYMMDDHHMMSSZZZZ (*) ZZZZ = Time zone (*) EDIFICE code

SG17 SCC-SG18

SCC Scheduling conditions

Function: A segment specifying information on the liability commitment of the buyer to this schedule.

Usage : M1

Notes :

Ref.	Rep.	Name		EDIFICE Utilisation
4017	an..3	M DELIVERY PLAN COMMITMENT LEVEL, CODED	M	1 = Firm 2 = Commitment for manufacturing and material 3 = Commitment for material 4 = Planning/forecast
4493	an..3	C DELIVERY INSTRUCTION, CODED	N	
C329		C PATTERN DESCRIPTION	N	
2013	an..3	C Frequency, coded	N	
2015	an..3	C Despatch pattern, coded	N	
2017	an..3	C Despatch pattern timing, coded	N	

SG18 QTY-DTM-SG19

QTY Quantity

Function: A segment specifying a quantity.

Usage : M1

Notes : EDIFICE recommends that DE 6063 should identify all quantities required on the specified date, by using code '131'. If trading partners require it, by agreement, DE 6063 could be used to identify details of how the scheduled quantities may be changing using the codes '18', '21', '85' and '94'.

Ref.	Rep.	Name	EDIFICE Utilisation
C186		M QUANTITY DETAILS	M
6063	an..3	M Quantity qualifier	M
			18 = Previous quantity No change 21 = Ordered quantity New quantity 85 = Previous order quantity to be cancelled Cancellation 94 = Substitutional quantity Change to an existing quantity 131 = Delivery quantity
6060	n..15	M Quantity	M
6411	an..3	C Measure unit qualifier	R
			0 if DE 6063 = 85 Use the following codes from UN/ECE Recommendation no.20, Codes for Units of Measurement: CLT = centilitre CMT = centimetre GRM = gram KGM = kilogram KMT = kilometre (*) LTR = litre MGM = milligram MMT = millimetre MTK = square metre MTQ = cubic metre MTR = metre PCE = piece (*) (*) EDIFICE code, not included in UN/ECE Recommendation No. 20 Other codes should be previously agreed between trading partners.

SG18 QTY-DTM-SG19

DTM Date/time/period

Function: A segment specifying the corresponding time-frame i.e. horizon start and end date/time or discrete date/time of the quantity.

Usage : R..2

Notes :

Ref.	Rep.	Name		EDIFICE Utilisation
C507		M DATE/TIME/PERIOD	M	
2005	an..3	M Date/time/period qualifier	M	2 = Delivery date/time, requested Date on which buyer requests goods to be delivered 10 = Shipment date/time, requested Date on which goods should be shipped or despatched by the supplier 158 = Horizon start date 159 = Horizon end date
2380	an..35	C Date/time/period	R	
2379	an..3	C Date/time/period format qualifier	R	102 = CCYMMDD 203 = CCYMMDDHHMM 303 = CCYMMDDHHMMZZZ ZZZ = Time zone 304 = CCYMMDDHHMMSSZZZ ZZZ = Time zone X03 = CCYMMDDHHMMZZZZZ (*) ZZZZZ = Time zone X04 = CCYMMDDHHMMSSZZZZZ (*) ZZZZZ = Time zone (*) EDIFICE code

SG19 RFF-DTM**RFF Reference**

Function: A segment specifying a document reference number and its appropriate line number.

Usage : M1

Notes :

Ref.	Rep.	Name		EDIFICE Utilisation
C506		M REFERENCE	M	
1153	an..3	M Reference qualifier	M	FDS = Firm delivery schedule reference number (*) Reference number assigned by the buyer to a specific firm delivery schedule. ON = Order number (purchase) (*) EDIFICE code
1154	an..35	C Reference number	R	
1156	an..6	C Line number	O	
4000	an..35	C Reference version number	N	
1060	an..6	C Revision number	N	

SG19 RFF-DTM**DTM Date/time/period**

Function: A segment specifying the date/time of the reference document.

Usage : 01

Notes :

Ref.	Rep.	Name		EDIFICE Utilisation
C507		M DATE/TIME/PERIOD	M	
2005	an..3	M Date/time/period qualifier	M	171 = Reference date/time
2380	an..35	C Date/time/period	R	
2379	an..3	C Date/time/period format qualifier	R	
				102 = CCYMMDD
				203 = CCYMMDDHHMM
				303 = CCYMMDDHHMMZZZ
				ZZZ = Time zone
				304 = CCYMMDDHHMMSSZZZ
				ZZZ = Time zone
				X03 = CCYMMDDHHMMZZZZZ (*)
				ZZZZZ = Time zone
				X04 = CCYMMDDHHMMSSZZZZZ (*)
				ZZZZZ = Time zone
				(*) EDIFICE code

SG20 PAC-QTY

PAC Package

Function: A segment specifying the product package type.
 Usage : M1
 Notes :

Ref.	Rep.	Name	EDIFICE Utilisation
7224	n..8	C NUMBER OF PACKAGES	N
C531		C PACKAGING DETAILS	N
7075	an..3	C Packaging level, coded	N
7233	an..3	C Packaging related information, coded	N
7073	an..3	C Packaging terms and conditions, coded	N
C202		C PACKAGE TYPE	R
7065	an..17	C Type of packages identification	R
The following codes are taken from UN/ECE Recommendation no.21, (TDED 5.8): BA = Barrel BB = Bobbin BE = Bundle BG = Bag BQ = Bottle, protected cylindrical BV = Bottle, protected bulbous BX = Box CG = Cage CN = Container, not otherwise specified as transport equipment CR = Crate CS = Case CT = Carton CX = Can, cylindrical DR = Drum EN = Envelope NE = Unpacked or unpackaged PC = Parcel PK = Package PU = Tray PX = Pallet RL = Reel RO = Roll SW = Shrinkwrapped TN = Tin TU = Tube The following codes are taken from EIDX documentation: BLK90 = Standard Bulk RAL90 = Standard Rail (semiconductor) REL90 = Standard Reel TRY90 = Standard Tray			
1131	an..3	C Code list qualifier	N
3055	an..3	C Code list responsible agency, coded	D
Only used if the code is taken from EIDX documentation. 116 = US, ANSI ASC X12			
7064	an..35	C Type of packages	N
C402		C PACKAGE TYPE IDENTIFICATION	N
7077	an..3	M Item description type, coded	N
7064	an..35	M Type of packages	N
7143	an..3	C Item number type, coded	N
7064	an..35	C Type of packages	N
7143	an..3	C Item number type, coded	N
C532		C RETURNABLE PACKAGE DETAILS	N
8395	an..3	C Returnable package freight payment responsibility, coded	N

Ref.	Rep.	Name	EDIFICE Utilisation	
8393	an..3	C Returnable package load contents, coded	N	

SG20 PAC-QTY**QTY Quantity**

Function: A segment specifying the number of products contained in the package type.

Usage : 01

Notes :

Ref.	Rep.	Name	EDIFICE Utilisation	
C186		M QUANTITY DETAILS	M	
6063	an..3	M Quantity qualifier	M	52 = Quantity per pack
6060	n..15	M Quantity	M	
6411	an..3	C Measure unit qualifier	N	

SG22 NAD-SG23

NAD Name and address

Function: A segment identifying the buyer as the party requesting the certificates, or identifying the manufacturer's code, for the line item.

Usage : M1

Notes : CO C082 is only used if DE 3035 = 'MF'.

Ref.	Rep.	Name	EDIFICE Utilisation	
3035	an..3	M PARTY QUALIFIER	M	BY = Buyer MF = Manufacturer of goods
C082		C PARTY IDENTIFICATION DETAILS	D	
3039	an..35	M Party identification	M	Manufacturer's code
1131	an..3	C Code list qualifier	D	
3055	an..3	C Code list responsible agency, coded	R	To be agreed between trading partners
C058		C NAME AND ADDRESS	N	
3124	an..35	M Name and address line	N	
3124	an..35	C Name and address line	N	
3124	an..35	C Name and address line	N	
3124	an..35	C Name and address line	N	
3124	an..35	C Name and address line	N	
C080		C PARTY NAME	N	
3036	an..35	M Party name	N	
3036	an..35	C Party name	N	
3036	an..35	C Party name	N	
3036	an..35	C Party name	N	
3036	an..35	C Party name	N	
3045	an..3	C Party name format, coded	N	
C059		C STREET	N	
3042	an..35	M Street and number/p.o. box	N	
3042	an..35	C Street and number/p.o. box	N	
3042	an..35	C Street and number/p.o. box	N	
3042	an..35	C Street and number/p.o. box	N	
3164	an..35	C CITY NAME	N	
3229	an..9	C COUNTRY SUB-ENTITY IDENTIFICATION	N	
3251	an..9	C POSTCODE IDENTIFICATION	N	
3207	an..3	C COUNTRY, CODED	N	

SG23 DOC

DOC Document/message details

Function: A segment specifying a requested certificate

Usage : M1

Notes :

Ref.	Rep.	Name		EDIFICE Utilisation
C002		M DOCUMENT/MESSAGE NAME	M	
1001	an..3	C Document/message name, coded	R	2 = Certificate of conformity 861 = Certificate of origin
1131	an..3	C Code list qualifier	N	
3055	an..3	C Code list responsible agency, coded	N	
1000	an..35	C Document/message name	N	
C503		C DOCUMENT/MESSAGE DETAILS	N	
1004	an..35	C Document/message number	N	
1373	an..3	C Document/message status, coded	N	
1366	an..70	C Document/message source	N	
3453	an..3	C Language, coded	N	
1056	an..9	C Version	N	
1060	an..6	C Revision number	N	
3153	an..3	C COMMUNICATION CHANNEL IDENTIFIER, CODED	N	
1220	n..2	C NUMBER OF COPIES OF DOCUMENT REQUIRED	N	
1218	n..2	C NUMBER OF ORIGINALS OF DOCUMENT REQUIRED	N	

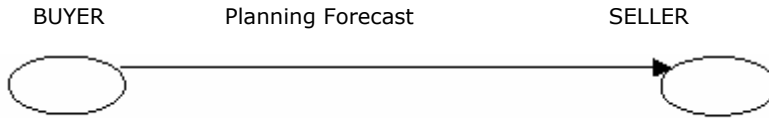
UNT Message trailer

Function: A service segment ending, and providing information for checking the completeness of a message.
 Usage : M1
 Notes : Refer to EDIFICE Utilisation of the UN/EDIFACT Service Segments, Issue EDSS04.

Ref.	Rep.	Name	EDIFICE Utilisation	
0074	n..6	M NUMBER OF SEGMENTS IN THE MESSAGE	M	Count of all segments in the message, UNH and UNT included.
0062	an..14	M MESSAGE REFERENCE NUMBER	M	Must be the same reference number as in DE 0062 of the UNH segment of this message.

EXAMPLES

EXAMPLE 1 – Planning Forecast



Forecasts are supplied from the buyer to the seller for planning purposes only.

Typically the forecast horizon will be over a longer term, whilst shipments from the seller to the buyer are scheduled over a shorter horizon. Actual deliveries are released based on a separate call off by the buyer.

UNB+UNOC:3+123456789:1:X+987654321:
1:X+021209:1909+88+X:
AA+DELFOR++1+X+1'
UNH+1+DELFOR:D:98B:UN:EDDF07'
BGM+A::8+5678+9'
DTM+137:19980217:102'

RFF+ALM:5677'

RFF+CT:999456'

NAD+BY+MAGIMAX LTD::92'

NAD+SE+ABC SUPPLIES::91'

CTA+PD+:PETER SMITH'
COM+0756-551459:TE'

GIS+94'

NAD+DP+MAGIMAX STORES LTD::92'

LIN+1++ABC00071:BP::92'
PIA+1+ACT2T:VP::91'

QTY+3:1000:PCE'

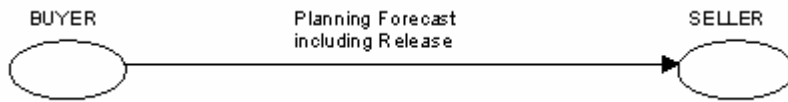
SCC+4'

QTY+131:500:PCE'
DTM+158:19980316:102'
DTM+159:19980322:102'

SCC+4'

QTY+131:500:PCE'
DTM+158:19980323:102'
DTM+159:19980329:102'
UNT+23+1'
UNZ+1+88'

EXAMPLE 2 – Planning Forecast with Embedded Release



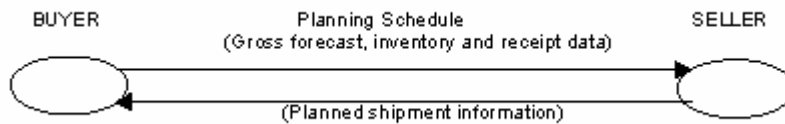
The buyer supplies a regular net planning forecast, against which the seller manufactures goods ready for shipment. Actual deliveries are released based on firm colloff requirements included alongside the delivery forecast information.

In this scenario, typically, the forecast may be weekly, and the requirement includes the firm short-term deliveries which may be for one or more times in the week.

EDIFICE recommends that the horizon of firm requirements embedded in the message is kept short, otherwise a more conventional ordering model should be used.

```
UNB+UNOC:3+123456789:1:X+987654321:1:X+021209:1909+88+X:AA+DELFOR++1+X+1'  
UNH+1+DELFOR:D:98B:UN:EDDF07'  
BGM+D::8+5678+9'  
DTM+137:19980217:102'  
  
RFF+ALM:5677'  
  
RFF+CT:999456'  
  
NAD+BY+MAGIMAX LTD::92'  
  
NAD+SE+ABC SUPPLIES::91'  
  
CTA+PD+:PETER SMITH'  
COM+0756-551459:TE'  
  
GIS+94'  
  
NAD+DP+MAGIMAX STORES LTD::92'  
  
LIN+1++ABC00071:BP::92'  
PIA+1+ACT2T:VP::91'  
  
QTY+3:1500:PCE'  
  
SCC+1'  
  
QTY+131:500:PCE'  
DTM+2:19980225:102'  
  
RFF+ON:6785432:1'  
  
SCC+4'  
  
QTY+131:500:PCE'  
DTM+158:19980316:102'  
DTM+159:19980322:102'  
  
SCC+4'  
  
QTY+131:500:PCE'  
DTM+158:19980323:102'  
DTM+159:19980329:102'  
UNT+27+1'  
UNZ+1+88'
```

EXAMPLE 3 – Supplier Managed Inventory (SMI)



This is the standard Supplier Managed Inventory scenario.

The buyer supplies regular gross forecasts, updated inventory target information, actual on-hand inventory and details of last receipts. The seller then calculates required shipments to meet the production and inventory needs, and schedules shipments accordingly.

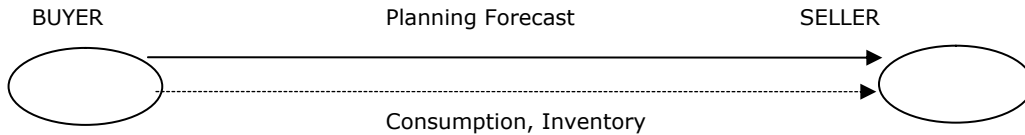
The seller may provide information on planned shipments for the buyer to monitor and to plan goods inwards facilities.

One single message, DELFOR, from buyer to seller, is recommended for synchronisation of data and ease of processing.

* Inventory targets e.g. maximum/minimum levels, could be agreed and defined externally, in the supplier's processing application, rather than in every message.

```
UNB+UNOC:3+123456789:1:X+987654321:1:X+021209:1909+88+X:AA+DELFOR++1+X+1'  
UNH+1+DELFOR:D:98B:UN:EDDF07'  
BGM+G::8+5678+9'  
DTM+137:19980217:102'  
  
RFF+ALM:5677'  
  
RFF+CT:999456'  
  
NAD+BY+MAGIMAX LTD::92'  
  
NAD+SE+ABC SUPPLIES::91'  
  
CTA+PD+:PETER SMITH'  
COM+0756-551459:TE'  
  
GIS+94'  
  
NAD+DP+MAGIMAX STORES LTD::92'  
  
LIN+1++ABC00071:BP::92'  
PIA+1+ACT2T:VP::91'  
  
RFF+BO:6785432:1'  
  
QTY+145:10123:PCE'  
DTM+366:19980217:102'  
  
QTY+97:7500:PCE'  
  
QTY+98:15000:PCE'  
  
QTY+48:1000:PCE'  
DTM+50:19980218:102'  
  
RFF+AAK:DA1234'  
  
QTY+3:1000:PCE'  
  
SCC+4'  
  
QTY+131:500:PCE'  
DTM+158:19980316:102'  
DTM+159:19980322:102'  
  
SCC+4'  
  
QTY+131:500:PCE'  
DTM+158:19980323:102'  
DTM+159:19980329:102'  
UNT+31+1'  
UNZ+1+88'
```

EXAMPLE 4 – Planning Forecast with Consignment Stock



The buyer provides regular forecasts of gross requirements, to ship into stock on the buyer's premises. The buyer manages the inventory levels/replenishment within parameters agreed with the seller: the inventory is still the property of the seller. Actual shipments may be made on the basis of firm order requirements embedded within the forecast message.

Consumption is reported by the buyer as a basis for the seller to keep track of the inventory and to raise invoices or check self-billing invoices.

Inventory information is supplied by the buyer as required, for audit/reconciliation purposes. This would include the last receipt details for reconciliation with goods in transit from the seller.

Note: this is NOT SMI.

DELFOR messages are typically weekly, but if consumption is reported on a more frequent basis (for example, daily) then the INVRPT message may be more appropriate.

UNB+UNOC:3+123456789:1:X+987654321:1:X+021209:1909+88+X:AA+DELFOR+++1+X+1'

UNH+1+DELFOR:D:98B:UN:EDDF07'

BGM+E::8+5678+9'

DTM+137:19980217:102'

RFF+ALM:5677'

RFF+CT:999456'

NAD+BY+MAGIMAX LTD::92'

NAD+SE+ABC SUPPLIES::91'

CTA+PD+:PETER SMITH'

COM+0756-551459:TE'

GIS+94'

NAD+DP+MAGIMAX STORES LTD::92'

LIN+1++ABC00071:BP::92'

PIA+1+ACT2T:VP::91'

QTY+145:10123:PCE'

DTM+366:19980217:102'

QTY+48:5629:PCE'

DTM+50:19980218:102'

RFF+AAK:DA1234'

QTY+58:6643:PCE'

RFF+TN:12345'

QTY+3:1500:PCE'

SCC+1'

QTY+131:500:PCE'

DTM+2:19980225:102'

RFF+ON:6785432:1'

SCC+4'

QTY+131:500:PCE'

DTM+158:19980316:102'

DTM+159:19980322:102'

SCC+4'

QTY+131:500:PCE'

DTM+158:19980323:102'

DTM+159:19980329:102'
UNT+34+1'
UNZ+1+88'