



The Global Network for B2B Integration in High Tech Industries

EDIFICE Message Implementation Guideline Price / Sales Catalogue

PRICAT Issue EDPC10

Endorsed on 15 June 2011

Based on UN/EDIFACT D.10A PRICAT message

Copyright ©EDIFICE 2011

All rights reserved. No part of this publication may be reproduced or transmitted in any form or by any means without prior permission of EDIFICE.

Notwithstanding the fact that the utmost care has been observed in the collecting, drawing up and formulating of data, EDIFICE can under no circumstances be held liable for errors, omissions or misinterpretations as a result of the information compiled in the guidelines.

EDIFICE
The Global Network for B2B Integration in High Tech industries
EDIFICE secretariat
Dora Cresens
Tiensestraat 12
B-3320 Hoegaarden
Belgium
Tel: +32 475 85 40 39
Email: Dora.Cresens@edifice.org

TABLE OF CONTENTS

COMPARISON TO PREVIOUS ISSUE	3
EDIFICE FUNCTIONAL DEFINITION	5
REFERENCES	6
EXPLANATORY NOTES	6
MESSAGE STRUCTURE CHART	7
BRANCHING DIAGRAM	8
SEGMENT GROUPS/SEGMENTS DESCRIPTION	11
SEGMENT DETAILS	15
EXAMPLES	46

COMPARISON TO PREVIOUS ISSUE

Issue EDPC10 of 1 June 2011: Upgrade to UN/EDIFACT Directory D.10A

The only structural change that occurs is the renumbering of the Segment Groups from SG17 onwards : A group of segments providing details of the product groups, individual items and related price information.

EDIFICE recommends to make use of EDIFACT code lists.

1. Where possible the earlier references to UN/ECE Recommendations were removed and EDIFACT qualifiers are used instead.
2. A number of EDIFICE defined qualifiers were replaced with relevant EDIFACT qualifiers or were completely removed when not in use.

The summary of all qualifier changes in this MIG is listed below:

All DTM segments 2005: EDIFICE code X03 is replaced with EDIFACT code 205, EDIFICE code X04: is removed

Place	EDIFICE Code	Replaced with EDIFACT code/Removed
All DTM-2005	X03=CCYMMDDHHMMZZZZ X04=CCYMMDDHHMMSSZZZZ	205=CCYMMDDHHMMZHHMM Removed
SG17-PGI-5379	PF=Product family	11=Product Group
SG36-LIN/PIA-C212-7143 SG36-PIA-C212-7143	DI=Distributor's part number AFE= Export Control Commodity number (ECCN) WS=WW-Semiconductors-Trade-Statistics number	SSS=Distributor's article identifier Removed: use CV= Customs article number or HS= Harmonised system depending on requirement. Removed
SG36-PIA-C212-3055	311 Assigned by Industry Agency	ZZZ=mutually defined
SG36-IMD-C272-7081	ZSI = Software included ZLR = Software licence required	Removed Removed
SG36-QTY-6063	OIQ=Order increment quantity	251=Incremental order quantity
SG36-QTY-6411	KTM=Kilometre UN/ECE Recommendation 20	Removed removed
SG36-ALI-4183	E1=New, announcement only E2=New, available E3=Obsolete E4=Prototype	125=New item, not yet available 126=New, available 127=Obsolete 128=Prototype
SG36-DTM-2005	LTB=Last Time buy date	424=Last date of ordering
SG40-PRI-C509-5375	SBP= Special buy price	Removed, recommended to use CT=Contract or QT=Quoted instead
SG47-PAC-C202-7065	TRY90=Standard Tray REL90=Standard Reel RAL90=Standard Rail BLK90= Standard Bulk	PU=Tray RL=Reel Removed Removed

Issue EDPC04 of 1 June 2005:

- Upgrade to UN/EDIFACT Code list D.04B

Replacement of EDIFICE codes with standard codes.

- SG33 - PIA - DE 3055:

'251' Assigned by industry/national grouping agency replaced with '60' Assigned by national trade agency (also see below)

EDIFICE code changes applied to the MIG. These EDIFICE codes will be submitted to UN/EDIFACT for inclusion in the UN/EDIFACT standard.

- SG33 - PIA - DE 3055:

'251' Assigned by industry/national grouping agency replaced with '311' Assigned by Industry Agency (also see above)

- SG44 - PAC - DE 7065:

'CN' Container replaced with 'CN' Container, not otherwise specified as transport equipment

'PE' Pallet replaced with 'PX' Pallet

Correction of the examples according to the code changes.

12 May 2004 : EDIFIX 5.0 Technical Upgrade

- The 'KMT' qualifier in SEG QTY, PRI, RNG and MEA DE 6411 is now defined as (*) EDIFICE code. UN/ECE Recommendation 20 specifies 'KTM' as qualifier for 'kilometre'.

21 May 2003: EDIFIX 4.2 Technical upgrade; review and correction of examples

Issue EDPC03 of 13 November 2002 is based on UN/EDIFACT D97.A / Code List D01.A

- Addition of the following code value:
 - o SG33, LIN segment, CO C212, DE 7143 code 'SRV' EAN.UCC Global Trade Item Number
 - o SG33, PIA segment, CO C212, DE 7143 code 'SRV' EAN.UCC Global Trade Item Number

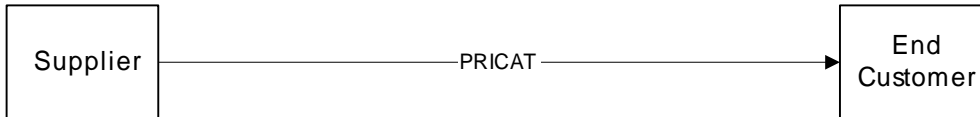
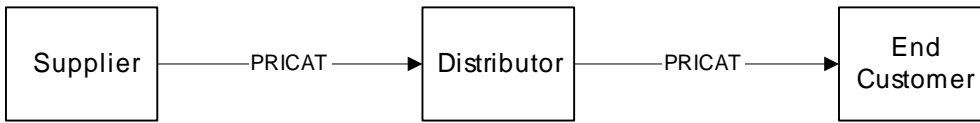
Issue EDPC02 of 29 May 2002 – addition of recommended set of DTM qualifiers

Issue EDPC02 includes the changes that have been made to the issue 1 of the Price/Sales Catalogue document endorsed by the EDIFICE Plenary on 29 November 1995. The changes are as follows:

- Recast from the 92.1 version of the UN/EDIFACT directory to the D.97A version,
- Addition of the following code values:
 - all NAD segments, DE 3055, code '16' DUNS (Dun & Bradstreet)
 - SG16, PGI segment, DE 5379, code 'WS' Worldwide-Semiconductors-Trade-Statistics number
 - SG33, PIA segment, DE 7143, codes 'CL' Color number
 - 'CV' Customs article number
 - 'DI' Distributor's part number
 - 'MF' Manufacturer's (producer's) article number
 - 'UP' UPC (Universal product code) and
 - 'WS' Worldwide-Semiconductors-Trade-Statistics number
 - SG33, PIA segment, DE 3055, codes '89' Assigned by distributor and '113' US, UCC (Uniform Code Council)
 - SG33, IMD segment, DE 7081, code '26' Ship to line
 - SG37, PRI segment, CO C509, DE 5375, code 'INV' Invoice price
 - SG44, PAC segment, DE 7065, codes 'BLK90' Standard Bulk
 - 'REL90' Standard Reel
 - 'TRY90' Standard Tray
 - SG44, PAC segment, CO C202, DE 3055, code '116' US, ANSI ASC X12,
- Replacement of the following segment:
 - SG33, PIT segment to LIN segment (which now holds the primary reference),
- Replacement of the following codes:
 - SG33, PIA segment, CO C212, DE 7143, code 'ZEC' to 'AFE' Export Control Commodity number (ECCN)
 - SG33, QTY segment, DE 6063, code '45' to '164' Delivery batch
 - SG37, PRI segment, CO C509, DE 5125, code 'INV' to 'AAA' Calculation net and 'AAB' Calculation gross
 - SG37, PRI segment, DE 5375, code 'MSR' to 'SR' Suggested retail
 - SG44, PAC segment, CO C202, DE 7065, code 'TR' to 'PU' Tray,
- Deletion of the following code values:
 - SG9, LOC segment, CO C517, DE 3055, code '6' UN/ECE (United Nations - Economic Commission for Europe)
 - SG33, PIA segment, DE 4347, code '5' Product identification
- Usage changed for the following segment groups/segments/data elements:
 - SG1, DTM segment, O1 to D1
 - SG6, R..5 to R..20
 - SG9, TOD segment, CO C100, DE 1131, X to D
 - SG9, TOD segment, CO C100, DE 3055, X to D
 - SG9, LOC segment, CO C517, DE 1131, X to D
 - SG9, LOC segment, CO C517, DE 3055, R to D
 - SG16, PGI segment, CO C288, DE 1131, R to N
 - SG16, PGI segment, CO C288, DE 5388, X to O
 - SG33, IMD segment, DE 7077, R to D
 - SG33, IMD segment, CO C273, A to D
 - SG33, IMD segment, CO C273, DE 7009, O to A
 - SG33, IMD segment, CO C273, DE 7008, O to D
 - SG33, ALI segment, 1st DE 4183, R to D
 - SG44, PAC segment, CO C202, DE 7064, O to D,

EDIFICE PRICAT FUNCTIONAL DEFINITION

The EDIFICE PRICAT message guideline is intended to support the transmission of price list information related to products offered by a supplier to his distributors or customers, or a distributor to his end customers.



This core version of the message focuses on the area of supply of electronic components. However, complex product structures (e.g. configurations) are not provided for.

The EDIFICE PRICAT message guideline is designed to transport information related to uniquely identified products. This information comprises:

- product identification,
- marketing information, (e.g. product life cycle information)
- logistics information,
- price information.

In the area of distribution of electronic components, the PRICAT message is a source of information given by manufacturers to distributors to support the business activities dealing with quotations, product availability, stock management, ship from stock and debit, ordering, etc.

The PRICAT message should be used for commercial information related to products and prone to frequent changes, such as price, discount and availability. More stable information, such as the technical description of products, should be communicated using the UN/EDIFACT Product Data Message (PRODAT).

The EDIFICE PRICAT message guideline supports two functions:

- change function - to communicate changes to be applied to an existing price list,
- replace function - a complete replacement of an existing price list.

One of these two functions must be indicated in the header section of the message (BGM segment, DE 1225).

The change function is further qualified at the detail level of the message (LIN segment, DE 1229) to indicate the following types of changes:

- addition - to add an item to an existing price list
- deletion - to delete an item from an existing price list.
- change - to modify information on an existing item in an existing price list.

The following data must be transmitted when using the change function:

- Those required to identify the individual products (PIA in SG33).
- All segments below the LIN segment, when there is a change in one of them.

The change function applies to data at detail level of the message and cannot be applied only to data which occurs at header level.

Prices are expressed in a single reference currency for the whole message. Rates of exchange may be given for the conversion of prices in the reference currency to prices in target currencies.

REFERENCES

Refer to the document : Reference list for the EDIFICE message guidelines – Issue 1

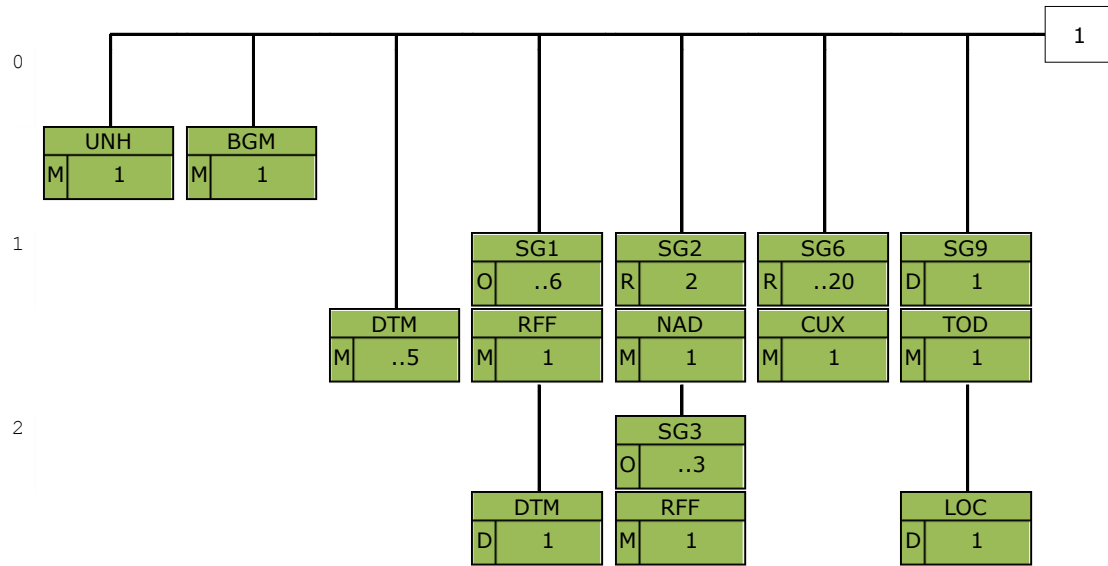
EXPLANATORY NOTES

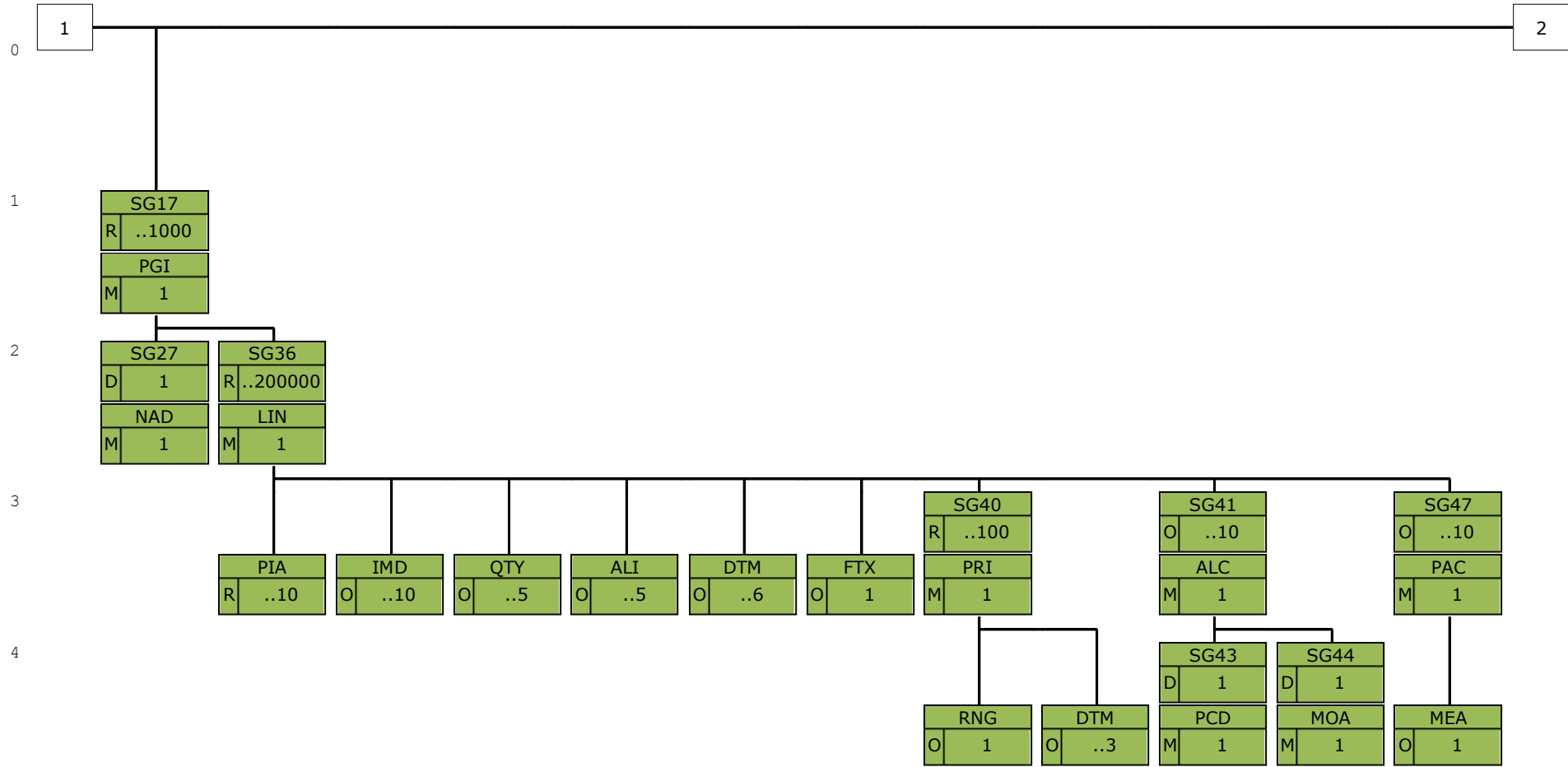
Refer to the document : Explanatory notes for the EDIFICE message guidelines – Issue 1

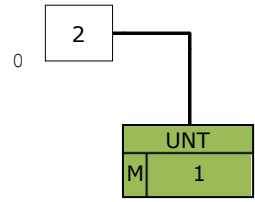
MESSAGE STRUCTURE CHART

UNH	Message header	M1
BGM	Beginning of message	M1
DTM	Date/time/period	M..5
SG1		O..6
RFF	Reference	M1
DTM	Date/time/period	D1
SG2		R2
NAD	Name and address	M1
SG3		O..3
RFF	Reference	M1
SG6		R..20
CUX	Currencies	M1
SG9		D1
TOD	Terms of delivery or transport	M1
LOC	Place/location identification	D1
SG17		R..1000
PGI	Product group information	M1
SG27		D1
NAD	Name and address	M1
SG36		R..200000
LIN	Line item	M1
PIA	Additional product id	R..10
IMD	Item description	O..10
QTY	Quantity	O..5
ALI	Additional information	O..5
DTM	Date/time/period	O..6
FTX	Free text	O1
SG40		R..100
PRI	Price details	M1
RNG	Range details	O1
DTM	Date/time/period	O..3
SG41		O..10
ALC	Allowance or charge	M1
SG43		D1
PCD	Percentage details	M1
SG44		D1
MOA	Monetary amount	M1
SG47		O..10
PAC	Package	M1
MEA	Measurements	O1
UNT	Message trailer	M1

BRANCHING DIAGRAM







SEGMENT GROUPS/SEGMENTS DESCRIPTION

UNH Message header

Function: A service segment heading, and uniquely identifying the message.
Usage: M1

BGM Beginning of message

Function: A segment uniquely identifying the message by means of its coded name, number and function.
Usage: M1

DTM Date/time/period

Function: A segment specifying the date of creation of the message and, other dates relevant to the whole message.
Usage: M..5

SG1 RFF-DTM

Function: A group of segments referencing documents and their dates, relating to the whole message.
Usage: O..6
Notes: The DTM segment must be sent where local law requires the date of a reference document to be sent.

RFF Reference

Function: A segment specifying a document reference number.
Usage: M1

DTM Date/time/period

Function: A segment specifying the date of the reference document.
Usage: D 1

SG2 NAD-SG3

Function: A group of segments identifying the parties involved and their associated information, relevant to the whole message.
Usage: R 2
Notes: The receiver of the Price/Sales Catalogue message is identified as 'buyer'.
The sender of the Price/Sales Catalogue message is identified as 'seller'.

NAD Name and address

Function: A segment identifying the function and coded identification, name and address of a party involved.
Usage: M1

SG3 RFF

Function: A group of segments giving references relating to the identified party involved.
Usage: O..3
Notes:

RFF Reference

Function: A segment specifying a company specific reference.
Usage: M1

SG6 CUX

Function: A group of segments specifying currencies, valid for the whole message.
Usage: R..20
Notes: At least one occurrence of the CUX segment must be present holding the reference currency in which prices are quoted. The segment group allows for up to 20 target currencies and their exchange rates relative to the reference currency.

CUX Currencies

Function: A segment specifying the reference and target currency for all prices and/or amounts.
Usage: M1

SG9 TOD-LOC

Function: A group of segments indicating the terms of delivery for the whole message.
Usage: D 1
Notes: To be used only if it is necessary to be specific about terms of delivery and the relevant location points.
The LOC segment is only used if the terms of delivery ('F' & 'C') require a named location/place.

TOD Terms of delivery or transport

Function: A segment specifying the transport charge method and applicable terms of delivery.
Usage: M 1

LOC Place/location identification

Function: A segment identifying a location or place required for the terms of delivery.
Usage: D 1

SG17 PGI-SG27-SG36

Function: A group of segments providing details of the product groups, individual items and related price information.
Usage: R ..1000
Notes: When DE 5379 '4' ('Group of products with the same price') is used in segment PGI, the price information for the group (SG40) must be included in the first occurrence of SG36.
SG27 is only used when products are grouped by supplier or manufacturer and it is required to provide information identifying the supplier or manufacturer.

PGI Product group information

Function: A segment identifying the type of grouping.
Usage: M 1

SG27 NAD

Function: A group of segments identifying the parties involved and their associated information, relevant to a product group.
Usage: D 1
Notes:

NAD Name and address

Function: A segment identifying the function and coded identification, name and address of a party involved.
Usage: M 1

SG36 LIN-PIA-IMD-QTY-ALI-DTM-FTX-SG40-SG41-SG47

Function: A group of segments providing details of the individual line items i.e. offered products.
Usage: R ..200000
Notes:

LIN Line item

Function: A segment identifying a line item by its item number, and agreed to be the primary reference number between the buyer and seller.
The segment also carries a sequence number assigned to the line item within the message, and the action taken.
Usage: M 1

PIA Additional product id

Function: A segment providing supplementary identification for the line item.
Usage: R ..10

IMD Item description

Function: A segment specifying a characteristic and/or an additional description in clear or coded form, for the line item.
Usage: O ..10

QTY **Quantity**

Function: A segment providing information about a possible order or delivery quantity for the line item.
Usage: O..5

ALI **Additional information**

Function: A segment indicating that special conditions due to the origin, customs preference, fiscal or commercial factors are applicable to the line item.
Usage: O..5

DTM **Date/time/period**

Function: A segment specifying a relevant date for the line item.
Usage: O..6

FTX **Free text**

Function: A segment providing a clear, free form text description for the line item.
Usage: O 1

SG40 **PRI-RNG-DTM**

Function: A group of segments specifying pricing information for the line item.
Usage: R..100
Notes: The RNG segment is only used if quantity ranges need to be transmitted for a price.

PRI **Price details**

Function: A segment specifying the line item price and the qualifying information.
Usage: M 1

RNG **Range details**

Function: A segment specifying the quantity range applicable to the specified line item price.
Usage: O 1

DTM **Date/time/period**

Function: A segment specifying a promotion period start or end date or the effective date of the specified line item price.
Usage: O..3

SG41 **ALC-SG43-SG44**

Function: A group of segments specifying allowances and/or charges for the line item.
Usage: O..10
Notes: The group occurs once for each allowance or charge. Within the group there must be one occurrence of either SG43 or SG44.

ALC **Allowance or charge**

Function: A segment specifying an allowance or charge, its settlement and calculation sequence.
Usage: M 1

SG43 **PCD**

Function: A group of segments specifying an allowance or charge as a percentage.
Usage: D 1
Notes:

PCD **Percentage details**

Function: A segment specifying a discount or charge percentage.
Usage: M 1

SG44 **MOA**

Function: A group of segments specifying an allowance or charge as an amount.
Usage: D 1
Notes: Currency of monetary amount is determined by the header CUX segment and reference currency cannot be different here.

MOA Monetary amount

Function: A segment specifying the monetary amount of an allowance or charge.
Usage: M 1

SG47 PAC-MEA

Function: A group of segments specifying product packaging information for the line item.
Usage: O..10
Notes: This segment group should be repeated for each package type available for the line item.

PAC Package

Function: A segment specifying the product package type.
Usage: M 1

MEA Measurements

Function: A segment specifying the number of products contained in the package type.
Usage: O 1

UNT Message trailer

Function: A service segment ending, and providing information for checking the completeness of a message.
Usage: M 1

SEGMENT DETAILS



UNH Message header

Function: A service segment heading, and uniquely identifying the message.

Usage : M1

Notes : Refer to EDIFICE Utilisation of the UN/EDIFACT Service Segments, Issue EDSS10

Ref.	Rep.	Name		EDIFICE Utilisation
0062	an..14	M MESSAGE REFERENCE NUMBER	M	Transmission message count from 1 PRICAT = Price/sales catalogue message D = Draft version/UN/EDIFACT Directory 10A = Release 2010 - A UN = UN/CEFACT EDPC10 = Price/sales catalogue Issue EDPC10
S009		M MESSAGE IDENTIFIER	M	
0065	an..6	M Message type	M	
0052	an..3	M Message version number	M	
0054	an..3	M Message release number	M	
0051	an..3	M Controlling agency, coded	M	
0057	an..6	C Association assigned code	R	
0110	an..6	C Code list directory version number	N	
0113	an..6	C Message type sub-function identification	N	
0068	an..35	C COMMON ACCESS REFERENCE	N	
S010		C STATUS OF THE TRANSFER	N	
0070	n..2	M Sequence of transfers	N	
0073	a1	C First and last transfer	N	
S016		C MESSAGE SUBSET IDENTIFICATION	N	
0115	an..14	M Message subset identification	N	
0116	an..3	C Message subset version number	N	
0118	an..3	C Message subset release number	N	
0051	an..3	C Controlling agency, coded	N	
S017		C MESSAGE IMPLEMENTATION GUIDELINE IDENTIFICATION	N	
0121	an..14	M Message implementation guideline identification	N	
0122	an..3	C Message implementation guideline version number	N	
0124	an..3	C Message implementation guideline release number	N	
0051	an..3	C Controlling agency, coded	N	
S018		C SCENARIO IDENTIFICATION	N	
0127	an..14	M Scenario identification	N	
0128	an..3	C Scenario version number	N	
0130	an..3	C Scenario release number	N	
0051	an..3	C Controlling agency, coded	N	

BGM Beginning of message

Function: A segment uniquely identifying the message by means of its coded name, number and function.

Usage : M1

Notes :

Ref.	Rep.	Name		EDIFICE Utilisation
C002		C DOCUMENT/MESSAGE NAME	R	
1001	an..3	C Document name code	R	9 = Price/sales catalogue
1131	an..17	C Code list identification code	N	
3055	an..3	C Code list responsible agency code	N	
1000	an..35	C Document name	N	
C106		C DOCUMENT/MESSAGE IDENTIFICATION	R	
1004	an..70	C Document identifier	R	Unique price/sales catalogue number assigned by the document sender.
1056	an..9	C Version identifier	N	
1060	an..6	C Revision identifier	N	
1225	an..3	C MESSAGE FUNCTION CODE	R	4 = Change This code is used to change an existing price list already known by the trading partner. In this case, any detail level changes must be further qualified in SG33, LIN segment, DE 1229. 5 = Replace This code is used to completely replace an existing price list.
4343	an..3	C RESPONSE TYPE CODE	N	

DTM Date/time/period

Function: A segment specifying the date of creation of the message and, other dates relevant to the whole message.
 Usage : M..5
 Notes : This information is applicable to the whole message. It may be overridden for individual products by information in SG33 DTM. At least two DTM segments must be present specifying the document creation date and the effective date.

Ref.	Rep.	Name		EDIFICE Utilisation
C507		M DATE/TIME/PERIOD	M	
2005	an..3	M Date or time or period function code qualifier	M	7 = Effective from date/time Date at which the price/sales catalogue information becomes effective. 36 = Expiry date Date of expiry of the validity of the price/sales catalogue information. 63 = Delivery date time, last Last possible date for delivery of products. 117 = Delivery date/time, first First possible date for delivery of products. 137 = Document issue date time Date when the document is created.
2380	an..35	C Date or time or period text	R	
2379	an..3	C Date or time or period format code	R	102 = CCYMMDD 203 = CCYMMDDHHMM 205 = CCYMMDDHHMMZHHMM Replaces EDIFICE code X03=CCYMMDDHHMMZZZZ 303 = CCYMMDDHHMMZZZ ZZZ = Time zone 304 = CCYMMDDHHMMSSZZZ ZZZ = Time zone

SG1 RFF-DTM

RFF Reference

Function: A segment specifying a document reference number.
 Usage : M1
 Notes :

Ref.	Rep.	Name		EDIFICE Utilisation
C506		M REFERENCE	M	AAD = Contract document addendum identifier CR = Customer reference number Reference number assigned by the customer to a transaction. CS = Condition of sale document number Reference number identifying the conditions of sale relevant to a sale. CT = Contract number GC = Government contract number PL = Price list number Reference to a previous Price/Sales Catalogue message.
1153	an..3	M Reference code qualifier	M	
1154	an..70	C Reference identifier	R	
1156	an..6	C Document line identifier	N	
1056	an..9	C Version identifier	N	
1060	an..6	C Revision identifier	N	

SG1 RFF-DTM**DTM Date/time/period**

Function: A segment specifying the date of the reference document.

Usage : D 1

Notes :

Ref.	Rep.	Name		EDIFICE Utilisation
C507		M DATE/TIME/PERIOD	M	
2005	an..3	M Date or time or period function code qualifier	M	171 = Reference date/time
2380	an..35	C Date or time or period text	R	
2379	an..3	C Date or time or period format code	R	102 = CCYYMMDD 203 = CCYYMMDDHHMM 205 = CCYYMMDDHHMMZHHMM Replaces EDIFICE code X03=CCYYMMDDHHMMZZZZ 303 = CCYYMMDDHHMMZZZ ZZZ = Time zone 304 = CCYYMMDDHHMMSSZZZ ZZZ = Time zone

SG2 NAD-SG3

NAD Name and address

Function: A segment identifying the function and coded identification, name and address of a party involved.

Usage : M1

Notes : It is advised that the party identification CO C082 be used. When CO C082 cannot be used it is recommended to use the structured name and address CO C080 through DE 3207 rather than the unstructured one CO C058.

Ref.	Rep.	Name		EDIFICE Utilisation
3035	an..3	M PARTY FUNCTION CODE QUALIFIER	M	BY = Buyer Party to which merchandise is sold. SE = Seller Party selling merchandise to a buyer. 9 = GS1 16 = US, D&B (Dun & Bradstreet Corporation) 91 = Assigned by seller or seller's agent 92 = Assigned by buyer or buyer's agent
C082		C PARTY IDENTIFICATION DETAILS	A	
3039	an..35	M Party identifier	M	
1131	an..17	C Code list identification code	N	
3055	an..3	C Code list responsible agency code	R	
C058		C NAME AND ADDRESS	D	
3124	an..35	M Name and address description	M	
3124	an..35	C Name and address description	O	
3124	an..35	C Name and address description	O	
3124	an..35	C Name and address description	O	
3124	an..35	C Name and address description	O	
C080		C PARTY NAME	D	
3036	an..70	M Party name	M	
3036	an..70	C Party name	O	
3036	an..70	C Party name	O	
3036	an..70	C Party name	O	
3036	an..70	C Party name	O	
3045	an..3	C Party name format code	N	
C059		C STREET	D	
3042	an..35	M Street and number or post office box identifier	M	
3042	an..35	C Street and number or post office box identifier	O	
3042	an..35	C Street and number or post office box identifier	O	
3042	an..35	C Street and number or post office box identifier	O	
3164	an..35	C CITY NAME	D	
C819		C COUNTRY SUBDIVISION DETAILS	C	
3229	an..9	C Country subdivision identifier	D	
1131	an..17	C Code list identification code	N	
3055	an..3	C Code list responsible agency code	N	
3228	an..70	C Country subdivision name	N	
3251	an..17	C POSTAL IDENTIFICATION CODE	D	
3207	an..3	C COUNTRY IDENTIFIER	D	Use ISO 3166, 2 alpha code

SG3 RFF

RFF Reference

Function: A segment specifying a company specific reference.

Usage : M1

Notes :

Ref.	Rep.	Name		EDIFICE Utilisation
C506		M REFERENCE	M	GN = Government reference number VA = VAT registration number XA = Company/place registration number
1153	an..3	M Reference code qualifier	M	
1154	an..70	C Reference identifier	R	
1156	an..6	C Document line identifier	N	
1056	an..9	C Version identifier	N	
1060	an..6	C Revision identifier	N	

SG6 CUX

CUX Currencies

Function: A segment specifying the reference and target currency for all prices and/or amounts.

Usage : M1

Notes : Prices and amounts are all stated in the reference currency. Prices in the reference currency may also be converted to other target currencies. The rate of exchange is a coefficient assigned by the seller and may take account of factors in his policy other than international financial markets.

If there is more than one occurrence of CUX the same reference currency must be present in all of them.

The general rule for calculating the target currency amount is as follows:

$$\text{Amount in Reference Currency} \times \text{Rate of Exchange} = \text{Amount in Target Currency}$$

A segment specifying the reference and target currency for all prices and/or amounts

Ref.	Rep.	Name	EDIFICE Utilisation	
C504		C CURRENCY DETAILS	R	
6347	an..3	M Currency usage code qualifier	M	2 = Reference currency 3 = Target currency
6345	an..3	C Currency identification code	R	Use ISO 4217, 3 alpha code
6343	an..3	C Currency type code qualifier	R	8 = Price list currency
6348	n..4	C Currency rate	N	
C504		C CURRENCY DETAILS	D	
6347	an..3	M Currency usage code qualifier	M	2 = Reference currency 3 = Target currency
6345	an..3	C Currency identification code	R	Use ISO 4217, 3 alpha code
6343	an..3	C Currency type code qualifier	R	8 = Price list currency
6348	n..4	C Currency rate	O	
5402	n..12	C CURRENCY EXCHANGE RATE	D	
6341	an..3	C EXCHANGE RATE CURRENCY MARKET IDENTIFIER	N	

SG9 TOD-LOC
TOD Terms of delivery or transport

Function: A segment specifying the transport charge method and applicable terms of delivery.

Usage : M1

Notes :

Ref.	Rep.	Name		EDIFICE Utilisation
4055	an..3	C DELIVERY OR TRANSPORT TERMS FUNCTION CODE	R	6 = Delivery condition
4215	an..3	C TRANSPORT CHARGES PAYMENT METHOD CODE	O	CC = Collect A shipment on which freight charges will be paid by consignee. DF = Defined by buyer and seller PC = Prepaid but charged to customer PP = Prepaid (by seller)
C100		C TERMS OF DELIVERY OR TRANSPORT	R	
4053	an..3	C Delivery or transport terms description code	R	Group E - Departure EXW = Ex Works (... named place) Group F - Main carriage unpaid FAS = Free Along Ship (... named port of shipment) FCA = Free Carrier (... named place) FOB = Free On Board (... named port of shipment) Group C - Main carriage paid CFR = Cost and Freight CIF = Cost, Insurance, Freight (... named port of destination) CIP = Carriage and Insurance Paid to (... named place of destination) CPT = Carriage Paid To (... named place of destination) Group D - Arrival DAF = Delivered At frontier (... named place) DDP = Delivered Duty Paid (... named place of destination) DDU = Delivered Duty Unpaid (... named place of destination) DEQ = Delivered Ex Quay (Duty paid) (... named port of destination) DES = Delivered Ex Ship (... named port of destination) If not applicable, use code from another appropriate code set in DE 4053 in combination with DE 1131/3055.
1131	an..17	C Code list identification code	D	
3055	an..3	C Code list responsible agency code	D	
4052	an..70	C Delivery or transport terms description	N	
4052	an..70	C Delivery or transport terms description	N	

SG9 TOD-LOC

LOC Place/location identification

Function: A segment identifying a location or place required for the terms of delivery.
 Usage : D1
 Notes :

Ref.	Rep.	Name		EDIFICE Utilisation
3227	an..3	M LOCATION FUNCTION CODE QUALIFIER	M	1 = Place of terms of delivery
C517		C LOCATION IDENTIFICATION	R	
3225	an..35	C Location identifier	R	Use UN/ECE Recommendation no.16, UNLOCODE. If not applicable, use codes from another appropriate code set in combination with DE 1131/3055.
1131	an..17	C Code list identification code	D	
3055	an..3	C Code list responsible agency code	D	3 = IATA (International Air Transport Association) 91 = Assigned by seller or seller's agent 92 = Assigned by buyer or buyer's agent
3224	an..256	C Location name	N	
C519		C RELATED LOCATION ONE IDENTIFICATION	N	
3223	an..35	C First related location identifier	N	
1131	an..17	C Code list identification code	N	
3055	an..3	C Code list responsible agency code	N	
3222	an..70	C First related location name	N	
C553		C RELATED LOCATION TWO IDENTIFICATION	N	
3233	an..35	C Second related location identifier	N	
1131	an..17	C Code list identification code	N	
3055	an..3	C Code list responsible agency code	N	
3232	an..70	C Second related location name	N	
5479	an..3	C RELATION CODE	N	

SG17 PGI-SG27-SG36

PGI Product group information

Function: A segment identifying the type of grouping.

Usage : M1

Notes :

Ref.	Rep.	Name		EDIFICE Utilisation
5379	an..3	M PRODUCT GROUP TYPE CODE	M	2 = No price group used 4 = Group of products with same price 11 = Product group Replaces EDIFICE code PF=Product family MF = Group of products supplied by same manufacturer (*) SU = Group of products supplied by same supplier (*) WS = Worldwide-Semiconductors-Trade-Statistics number (*) (*) EDIFICE code
C288		C PRODUCT GROUP	O	This composite can be used to provide a pricing or product group code and description as agreed between the trading partners.
5389	an..25	C Product group name code	O	
1131	an..17	C Code list identification code	N	
3055	an..3	C Code list responsible agency code	N	
5388	an..35	C Product group name	O	

SG27 NAD
NAD Name and address

Function: A segment identifying the function and coded identification, name and address of a party involved.

Usage : M1

Notes : It is advised that the party identification CO C082 be used. When CO C082 cannot be used it is recommended to use the structured name and address CO C080 through DE 3207 rather than the unstructured one CO C058.

Ref.	Rep.	Name		EDIFICE Utilisation
3035	an..3	M PARTY FUNCTION CODE QUALIFIER	M	MF = Manufacturer of goods SU = Supplier 9 = GS1 16 = US, D&B (Dun & Bradstreet Corporation) 91 = Assigned by seller or seller's agent 92 = Assigned by buyer or buyer's agent
C082		C PARTY IDENTIFICATION DETAILS	A	
3039	an..35	M Party identifier	M	
1131	an..17	C Code list identification code	N	
3055	an..3	C Code list responsible agency code	R	
C058		C NAME AND ADDRESS	D	
3124	an..35	M Name and address description	M	
3124	an..35	C Name and address description	O	
3124	an..35	C Name and address description	O	
3124	an..35	C Name and address description	O	
C080		C PARTY NAME	D	
3036	an..70	M Party name	M	
3036	an..70	C Party name	O	
3036	an..70	C Party name	O	
3036	an..70	C Party name	O	
3036	an..70	C Party name	O	
3045	an..3	C Party name format code	N	
C059		C STREET	D	
3042	an..35	M Street and number or post office box identifier	M	
3042	an..35	C Street and number or post office box identifier	O	
3042	an..35	C Street and number or post office box identifier	O	
3042	an..35	C Street and number or post office box identifier	O	
3164	an..35	C CITY NAME	D	
C819		C COUNTRY SUBDIVISION DETAILS	C	
3229	an..9	C Country subdivision identifier	D	
1131	an..17	C Code list identification code	N	
3055	an..3	C Code list responsible agency code	N	
3228	an..70	C Country subdivision name	N	
3251	an..17	C POSTAL IDENTIFICATION CODE	D	
3207	an..3	C COUNTRY IDENTIFIER	D	Use ISO 3166, 2 alpha code

SG36 LIN-PIA-IMD-QTY-ALI-DTM-FTX-SG40-SG41-SG47

LIN Line item

Function: A segment identifying a line item by its item number, and agreed to be the primary reference number between the buyer and seller.
 The segment also carries a sequence number assigned to the line item within the message, and the action taken.

Usage : M1

Notes : The LIN segment acts as the trigger segment for information related to one line item.
 When DE 1225 in BGM is set to '4' (change) it is necessary to explicitly indicate in DE 1229 what modification applies to the line item.

Ref.	Rep.	Name		EDIFICE Utilisation
1082	an..6	C LINE ITEM IDENTIFIER	R	It is required to assign a number to the line items within a message. The number is assigned by the sender of the message. The first line item within a message will be numbered 1 and further line items will be incremented by 1 for each new line. 1 = Added This code is used to add an item to an existing price list. 2 = Deleted This code is used to delete an item from an existing price list. In the case of deletion, only the LIN segment need be sent. 3 = Changed This code is used to modify information on an existing item in an existing price list. Primary reference BP = Buyer's part number EN = International Article Numbering Association (EAN) MF = Manufacturer's (producer's) article number SRV = EAN.UCC Global Trade Item Number SSS = Distributor's article identifier Replaces EDIFACT code DI=Distributor's part number UP = UPC (Universal product code) VP = Vendor's (seller's) part number 9 = GS1 89 = Assigned by distributor 90 = Assigned by manufacturer 91 = Assigned by seller or seller's agent 92 = Assigned by buyer or buyer's agent 113 = GS1 US
1229	an..3	C ACTION CODE	D	
C212		C ITEM NUMBER IDENTIFICATION	R	
7140	an..35	C Item identifier	R	
7143	an..3	C Item type identification code	R	
1131	an..17	C Code list identification code	N	
3055	an..3	C Code list responsible agency code	R	
C829		C SUB-LINE INFORMATION	N	
5495	an..3	C Sub-line indicator code	N	
1082	an..6	C Line item identifier	N	
1222	n..2	C CONFIGURATION LEVEL NUMBER	N	
7083	an..3	C CONFIGURATION OPERATION CODE	N	

SG36 LIN-PIA-IMD-QTY-ALI-DTM-FTX-SG40-SG41-SG47

PIA Additional product id

Function: A segment providing supplementary identification for the line item.

Usage : R..10

Notes : The 5 internal repetitions of CO C212 may be used, but EDIFICE recommends to only use the first occurrence.

Ref.	Rep.	Name		EDIFICE Utilisation
4347	an..3	M PRODUCT IDENTIFIER CODE QUALIFIER	M	1 = Additional identification To provide additional identification(s) for the item identified in the LIN segment. The additional identification can consist of: - A supplemental identification which provides more information complementary to the primary reference number e.g., a batch number, promotional variant number, grouping code - An alternative identification e.g., a buyer's part number. 2 = Identification for potential substitution To provide the article number of an item which can be substituted for the primary reference number. 3 = Substituted by To provide the article number of an item which is permanently substituted for the primary reference number. 4 = Substituted for To provide the article number of an item which has been substituted by the primary reference number BP = Buyer's part number CL = Colour number CV = Customs article number DR = Drawing revision number DW = Drawing EC = Engineering change level EN = International Article Numbering Association (EAN) HS = Harmonised system Code classifying products according to the Customs Co-operation Council Nomenclature 'Harmonized System'. MF = Manufacturer's (producer's) article number NB = Batch number PV = Promotional variant number SG = Standard group of products (mixed assortment) SRV = EAN.UCC Global Trade Item Number SSS = Distributor's article identifier Replaces EDIFICE code DI=Distributor's part number UP = UPC (Universal product code) VP = Vendor's (seller's) part number (*) EDIFICE code 9 = GS1 60 = Assigned by national trade agency 89 = Assigned by distributor 90 = Assigned by manufacturer 91 = Assigned by seller or seller's agent 92 = Assigned by buyer or buyer's agent 113 = GS1 US ZZZ = Mutually defined Replaces EDIFICE code 311=Assigned by Industry Agency
C212		M ITEM NUMBER IDENTIFICATION	M	
7140	an..35	C Item identifier	R	
7143	an..3	C Item type identification code	R	
1131	an..17	C Code list identification code	N	
3055	an..3	C Code list responsible agency code	R	

Ref.	Rep.	Name	EDIFICE Utilisation	
7140	an..35	C Item identifier	R	
7143	an..3	C Item type identification code	R	
1131	an..17	C Code list identification code	N	
3055	an..3	C Code list responsible agency code	R	
C212		C ITEM NUMBER IDENTIFICATION	O	As for first CO C212
7140	an..35	C Item identifier	R	
7143	an..3	C Item type identification code	R	
1131	an..17	C Code list identification code	N	
3055	an..3	C Code list responsible agency code	R	
C212		C ITEM NUMBER IDENTIFICATION	O	As for first CO C212
7140	an..35	C Item identifier	R	
7143	an..3	C Item type identification code	R	
1131	an..17	C Code list identification code	N	
3055	an..3	C Code list responsible agency code	R	
C212		C ITEM NUMBER IDENTIFICATION	O	As for first CO C212
7140	an..35	C Item identifier	R	
7143	an..3	C Item type identification code	R	
1131	an..17	C Code list identification code	N	
3055	an..3	C Code list responsible agency code	R	

SG36 LIN-PIA-IMD-QTY-ALI-DTM-FTX-SG40-SG41-SG47

IMD Item description

Function: A segment specifying a characteristic and/or an additional description in clear or coded form, for the line item.

Usage : 0..10

Notes : If both coded and free-form descriptions are required then the IMD segment must be repeated.

Ref.	Rep.	Name		EDIFICE Utilisation
7077	an..3	C DESCRIPTION FORMAT CODE	R	C = Code (from industry code list) F = Free-form S = Structured (from industry code list) 3 = Ship to stock i.e. straight to stock, without any need of inspection at the receiving end 13 = Quality 26 = Ship to line Use DE 7009 for a coded description. If no code is available use DE 7008 instead. CU = Consumer unit (*) DU = Despatch unit (*) IT = Intermediate unit (*) TU = Traded (Order) unit (*) HN = Handling unit (*) IN = Invoicing unit (*) NO = Not an ordering unit (*) VQ = Variable quantity product (*) SG = Standard group of products (mixed assortment) (*) SU = Smallest unit (*) (*) EDIFICE code to be used. EDIFACT does not maintain a valid set of codes for Code List 7009.
C272		C ITEM CHARACTERISTIC	C	
7081	an..3	C Item characteristic code	O	
1131	an..17	C Code list identification code	N	
3055	an..3	C Code list responsible agency code	N	
C273		C ITEM DESCRIPTION	D	
7009	an..17	C Item description code	A	
1131	an..17	C Code list identification code	N	
3055	an..3	C Code list responsible agency code	N	
7008	an..256	C Item description	D	
7008	an..256	C Item description	O	
3453	an..3	C Language name code	N	
7383	an..3	C SURFACE OR LAYER CODE	N	

SG36 LIN-PIA-IMD-QTY-ALI-DTM-FTX-SG40-SG41-SG47

QTY Quantity

Function: A segment providing information about a possible order or delivery quantity for the line item.

Usage : 0..5

Notes :

Ref.	Rep.	Name		EDIFICE Utilisation
C186		M QUANTITY DETAILS	M	
6063	an..3	M Quantity type code qualifier	M	52 = Quantity per pack 53 = Minimum order quantity 54 = Maximum order quantity 59 = Numbers of consumer units in the traded unit 164 = Delivery batch 251 = Incremental order quantity Replaces EDIFICE code OIQ=Order increment quantity
6060	an..35	M Quantity	M	
6411	an..8	C Measurement unit code	R	CLT = centilitre CMT = centimetre EA = each GRM = gram H87 = piece KGM = kilogram KMT = kilometre LTR = litre MGM = milligram MMT = millimetre MTK = square metre MTQ = cubic metre MTR = metre PCE = piece (*) EDIFICE Code 'PCE' is widely adopted by membership and preferred over the EDIFACT code 'H87' (*) EDIFICE code Other codes should be previously agreed between trading partners.

SG36 LIN-PIA-IMD-QTY-ALI-DTM-FTX-SG40-SG41-SG47

ALI Additional information

Function: A segment indicating that special conditions due to the origin, customs preference, fiscal or commercial factors are applicable to the line item.

Usage : 0..5

Notes :

Ref.	Rep.	Name	EDIFICE Utilisation	
3239	an..3	C COUNTRY OF ORIGIN IDENTIFIER	A	Use ISO 3166, 2 alpha code
9213	an..3	C DUTY REGIME TYPE CODE	N	

Ref.	Rep.	Name	EDIFICE Utilisation
4183	an..3	C SPECIAL CONDITION CODE	<p>D</p> <p>1 = Item for national preference 6 = Subject to bonus 9 = Freely available in EEC 16 = Subject to embargo restriction 18 = Item subject to national export restrictions 20 = Item subject to import restrictions 125 = New item, not yet available Replaces EDIFICE code E1=New, announcement only 126 = New, available Replaces EDIFICE code E2=New, available 127 = Obsolete Replaces EDIFICE code E3=Obsolete 128 = Prototype Replaces EDIFICE code E4=Prototype CSR = Contact supplier (*) LPR = Less popular (*) NCO = Non-cancellable order (*) NPD = Not preferred (*) OAN = On allocation (*) PPR = Subject to price protection (*) PTP = Push type (*) SCA = Ship & credit allowed (*) SDA = Special/dedicated application (*) SDP = Subject to design protection (*) SSC = Sole source (*) STA = Stock return allowed (*) TPR = Thrust product (*) L = Last buy (*) Life cycle stage 6 P = Production (*) Life cycle stage 4 N = Not recommended for new design (*) Life cycle stage 5</p> <p>Strategic goods indicator. Only one of the following values can apply per product. SG0 = Not controlled (*) SG1 = Controlled, industrial goods, not US origin (*) Controlled according to international regulation(s) for industrial (dual-use) goods, not US origin. SG2 = Controlled, industrial goods, US origin (*) Controlled according to international regulation(s) for industrial (dual-use) goods, US origin. SG3 = Controlled by US national regulation(s) (*) SG4 = Controlled by other national regulation(s) (*) SG5 = Controlled by Australian group for chemical or biological warfare (CBW) (*) SG6 = Controlled by missile technology control regime (MTCR) (*) SG7 = Provisional (final indicator to be fixed) (*) SG8 = Controlled, nuclear goods (*) Controlled according to international regulation(s) for nuclear goods. SG9 = Controlled, military goods (*) Controlled according to international regulation(s) for military goods.</p> <p>(*) EDIFICE code</p>
4183	an..3	C SPECIAL CONDITION CODE	O As for first DE 4183
4183	an..3	C SPECIAL CONDITION CODE	O As for first DE 4183
4183	an..3	C SPECIAL CONDITION CODE	O As for first DE 4183
4183	an..3	C SPECIAL CONDITION CODE	O As for first DE 4183

SG36 LIN-PIA-IMD-QTY-ALI-DTM-FTX-SG40-SG41-SG47**DTM Date/time/period**

Function: A segment specifying a relevant date for the line item.

Usage : 0..6

Notes : For individual products, this information overrides information communicated in the Header DTM segment.
Values '803' Week, '804' Day and '805' Hour for DE 2379 only apply when DE 2005 holds '169' Lead time.

Ref.	Rep.	Name		EDIFICE Utilisation
C507		M DATE/TIME/PERIOD	M	
2005	an..3	M Date or time or period function code qualifier	M	7 = Effective from date/time Date at which the product information becomes effective. 36 = Expiry date Date of expiry of validity of product information. 63 = Delivery date time, last Last possible date for delivery of product. 117 = Delivery date/time, first First possible date for delivery of product. 169 = Lead time Time required between order entry till earliest goods delivery. 424 = Last date of ordering Replaces EDIFICE code LTB=Last time buy date
2380	an..35	C Date or time or period text	R	
2379	an..3	C Date or time or period format code	R	102 = CCYMMDD 203 = CCYMMDDHHMM 205 = CCYMMDDHHMMZHHMM Replaces EDIFICE code X03=CCYMMDDHHMMZZZZ 303 = CCYMMDDHHMMZZZ ZZZ = Time zone 304 = CCYMMDDHHMMSSZZZ ZZZ = Time zone

SG36 LIN-PIA-IMD-QTY-ALI-DTM-FTX-SG40-SG41-SG47
FTX Free text

Function: A segment providing a clear, free form text description for the line item.

Usage : 01

Notes : EDIFICE recommends not to use FTX segments.

This segment is to communicate item descriptions which cannot be accommodated in the IMD segment.

Ref.	Rep.	Name		EDIFICE Utilisation
4451	an..3	M TEXT SUBJECT CODE QUALIFIER	M	PRD = Product information 1 = Text for subsequent use The language code is used to indicate the free text language if it is other than the language agreed between the trading partners. Use ISO 639, 2 alpha code
4453	an..3	C FREE TEXT FUNCTION CODE	R	
C107		C TEXT REFERENCE	N	
4441	an..17	M Free text description code	N	
1131	an..17	C Code list identification code	N	
3055	an..3	C Code list responsible agency code	N	
C108		C TEXT LITERAL	R	
4440	an..512	M Free text	M	
4440	an..512	C Free text	O	
4440	an..512	C Free text	O	
4440	an..512	C Free text	O	
4440	an..512	C Free text	O	
3453	an..3	C LANGUAGE NAME CODE	D	
4447	an..3	C FREE TEXT FORMAT CODE	N	

SG40 PRI-RNG-DTM

PRI Price details

Function: A segment specifying the line item price and the qualifying information.

Usage : M1

Notes : When code 'SR' is used in DE 5375, it is not appropriate to use 'INV' in DE 5387.

Ref.	Rep.	Name	EDIFICE Utilisation
C509		C PRICE INFORMATION	<p>R M</p> <p>AAA = Calculation net AAB = Calculation gross Allowances and charges to be applied to the price and must be provided in SG41</p> <p>R R</p> <p>CT = Contract DI = Distributor PV = Provisional price TB = To be negotiated QT = Quoted SR = Suggested retail Manufacturer's suggested retail or resale price EDIFICE code SBP=Special buy Price was removed. It is recommended to use CT=Contract or QT=Quoted instead.</p> <p>N R R</p> <p>CLT = centilitre CMT = centimetre EA = each GRM = gram H87 = piece KGM = kilogram KMT = kilometre KTM = LTR = litre MGM = milligram MMT = millimetre MTK = square metre MTQ = cubic metre MTR = metre PCE = piece (*) EDIFICE Code 'PCE' is widely adopted by membership and preferred over the EDIFACT code 'H87' (*) EDIFICE code Other codes should be previously agreed between trading partners.</p>
5125	an..3	M Price code qualifier	
5118	n..15	C Price amount	
5375	an..3	C Price type code	
5387	an..3	C Price specification code	
5284	n..9	C Unit price basis quantity	
6411	an..8	C Measurement unit code	
5213	an..3	C SUB-LINE ITEM PRICE CHANGE OPERATION CODE	

SG40 PRI-RNG-DTM
RNG Range details

Function: A segment specifying the quantity range applicable to the specified line item price.

Usage : 01

Notes :

Ref.	Rep.	Name		EDIFICE Utilisation
6167	an..3	M RANGE TYPE CODE QUALIFIER	M	4 = Quantity range CLT = centilitre CMT = centimetre EA = each GRM = gram H87 = piece KGM = kilogram KMT = kilometre KTM = LTR = litre MGM = milligram MMT = millimetre MTK = square metre MTQ = cubic metre MTR = metre PCE = piece (*) EDIFICE Code 'PCE' is widely adopted by membership and preferred over the EDIFACT code 'H87' (*) EDIFICE code Other codes should be previously agreed between trading partners.
C280		C RANGE	R	
6411	an..8	M Measurement unit code	M	
6162	n..18	C Range minimum quantity	R	
6152	n..18	C Range maximum quantity	O	Minimum quantity of the range

SG40 PRI-RNG-DTM**DTM Date/time/period**

Function: A segment specifying a promotion period start or end date or the effective date of the specified line item price.

Usage : 0..3

Notes :

Ref.	Rep.	Name		EDIFICE Utilisation
C507		M DATE/TIME/PERIOD	M	
2005	an..3	M Date or time or period function code qualifier	M	7 = Effective from date/time 15 = Promotion start date/time 16 = Promotion end date/time
2380	an..35	C Date or time or period text	R	
2379	an..3	C Date or time or period format code	R	102 = CCYYMMDD 203 = CCYYMMDDHHMM 205 = CCYYMMDDHHMMZHHMM Replaces EDIFICE code X03=CCYYMMDDHHMMZZZZ 303 = CCYYMMDDHHMMZZZ ZZZ = Time zone 304 = CCYYMMDDHHMMSSZZZ ZZZ = Time zone

SG41 ALC-SG43-SG44

ALC Allowance or charge

Function: A segment specifying an allowance or charge, its settlement and calculation sequence.

Usage : M1

Notes : Use DE 4471 if DE 5463 indicates 'Charge'.

Use DE 1227 to specify sequence of calculation if more than one ALC segment is used.

Ref.	Rep.	Name		EDIFICE Utilisation
5463	an..3	M ALLOWANCE OR CHARGE CODE QUALIFIER	M	A = Allowance C = Charge
C552		C ALLOWANCE/CHARGE INFORMATION	O	
1230	an..35	C Allowance or charge identifier	O	
5189	an..3	C Allowance or charge identification code	N	
4471	an..3	C SETTLEMENT MEANS CODE	D	5 = Charge to be paid by vendor 'vendor' is a synonym for 'seller' 6 = Charge to be paid by customer
1227	an..3	C CALCULATION SEQUENCE CODE	D	To specify the sequence in which an allowance or charge is calculated. The number must be in ascending order, with no gaps and starting from 1. The basis for calculation of the first allowance or charge is the amount for the line item. The basis for calculation of any subsequent allowance or charge is the amount for the line item resulting from the previous calculation.
C214		C SPECIAL SERVICES IDENTIFICATION	O	This composite is used to indicate the type of allowance or charge.
7161	an..3	C Special service description code	M	See UN/EDIFACT code list
1131	an..17	C Code list identification code	N	
3055	an..3	C Code list responsible agency code	N	
7160	an..35	C Special service description	N	
7160	an..35	C Special service description	N	

SG43 PCD**PCD Percentage details**

Function: A segment specifying a discount or charge percentage.

Usage : M1

Notes :

Ref.	Rep.	Name		EDIFICE Utilisation
C501		M PERCENTAGE DETAILS	M	
5245	an..3	M Percentage type code qualifier	M	3 = Monetary amount adjustment percentage 12 = Discount
5482	n..10	C Percentage	R	
5249	an..3	C Percentage basis identification code	N	
1131	an..17	C Code list identification code	N	
3055	an..3	C Code list responsible agency code	N	
4405	an..3	C STATUS DESCRIPTION CODE	N	

SG44 MOA**MOA Monetary amount**

Function: A segment specifying the monetary amount of an allowance or charge.

Usage : M1

Notes :

Ref.	Rep.	Name		EDIFICE Utilisation
C516		M MONETARY AMOUNT	M	
5025	an..3	M Monetary amount type code qualifier	M	23 = Charge amount 52 = Discount amount
5004	n..35	C Monetary amount	R	
6345	an..3	C Currency identification code	N	
6343	an..3	C Currency type code qualifier	N	
4405	an..3	C Status description code	N	

SG47 PAC-MEA

PAC Package

Function: A segment specifying the product package type.

Usage : M1

Notes : CO C532 is only used if packages are returnable.

Ref.	Rep.	Name	EDIFICE Utilisation
7224	n..8	C PACKAGE QUANTITY	N
C531		C PACKAGING DETAILS	N
7075	an..3	C Packaging level code	N
7233	an..3	C Packaging related description code	N
7073	an..3	C Packaging terms and conditions code	N
C202		C PACKAGE TYPE	R
7065	an..17	C Package type description code	A
			DE 7064 is only used for type of package description if no appropriate code is available for DE 7065. BA = Barrel BB = Bobbin BE = Bundle BG = Bag BQ = Bottle, protected cylindrical BV = Bottle, protected bulbous BX = Box CG = Cage CN = Container, not otherwise specified as transport equipment CR = Crate CS = Case CT = Carton CX = Can, cylindrical DR = Drum EN = Envelope NE = Unpacked or unpackaged PC = Parcel PK = Package PU = Tray pack Replaces formerly defined Code TRY90 PX = Pallet RL = Reel Replaces formerly defined Code REL90 RO = Roll SW = Shrinkwrapped TN = Tin TU = Tube Other codes should be previously agreed between trading partners.
1131	an..17	C Code list identification code	O
3055	an..3	C Code list responsible agency code	D
7064	an..35	C Type of packages	D
C402		C PACKAGE TYPE IDENTIFICATION	N
7077	an..3	M Description format code	N
7064	an..35	M Type of packages	N
7143	an..3	C Item type identification code	N
7064	an..35	C Type of packages	N
7143	an..3	C Item type identification code	N
C532		C RETURNABLE PACKAGE DETAILS	D
8395	an..3	C Returnable package freight payment responsibility code	R
8393	an..3	C Returnable package load contents code	N
			1 = Paid by customer 3 = Paid by supplier
			Only used if non-EDIFACT codes are defined in 7065

SG47 PAC-MEA

MEA Measurements

Function: A segment specifying the number of products contained in the package type.

Usage : 01

Notes : This is used when additional information on the number of units is required.

Ref.	Rep.	Name		EDIFICE Utilisation
6311	an..3	M MEASUREMENT PURPOSE CODE QUALIFIER	M	CT = Counts CLT = centilitre CMT = centimetre EA = each GRM = gram H87 = piece KGM = kilogram KMT = kilometre LTR = litre MGM = milligram MMT = millimetre MTK = square metre MTQ = cubic metre MTR = metre PCE = piece (*) EDIFICE Code 'PCE' is widely adopted by membership and preferred over the EDIFACT code 'H87' (*) EDIFICE code Other codes should be previously agreed between trading partners. Number of units
C502		C MEASUREMENT DETAILS	N	
6313	an..3	C Measured attribute code	N	
6321	an..3	C Measurement significance code	N	
6155	an..17	C Non-discrete measurement name code	N	
6154	an..70	C Non-discrete measurement name	N	
C174		C VALUE/RANGE	R	
6411	an..8	M Measurement unit code	M	
6314	an..18	C Measure	R	
6162	n..18	C Range minimum quantity	N	
6152	n..18	C Range maximum quantity	N	
6432	n..2	C Significant digits quantity	N	
7383	an..3	C SURFACE OR LAYER CODE	N	

UNT Message trailer

Function: A service segment ending, and providing information for checking the completeness of a message.

Usage : M1

Notes : Refer to EDIFICE Utilisation of the UN/EDIFACT Service Segments, Issue EDSS05.

Ref.	Rep.	Name	EDIFICE Utilisation	
0074	n..10	M NUMBER OF SEGMENTS IN A MESSAGE	M	Count of all segments in the message, UNH and UNT included.
0062	an..14	M MESSAGE REFERENCE NUMBER	M	Must be the same reference number as in DE 0062 of the UNH segment of this message.

EXAMPLES

Example 1 PRICAT 'replace' function

```
UNB+UNOW:4+234567891:1:X+198765432:1:X+971201:1924+66+X:AA+PRICAT++1+X+1'  
UNH+0001+PRICAT:D:10A:UN:EDPC10'  
BGM+9+00000000015+5'  
DTM+7:20100817:102'  
DTM+137:20100817:102'  
NAD+SE+AMD:::91'  
NAD+BY+8713381138577:::9'  
CUX+2:ITL:8'  
PGI+2'  
LIN+1++PRODUCT 1:VP:::91'  
PIA+1+L2D:WS:::91'  
IMD+F++TU:::PRODUCT 1 DESCRIPTION'  
ALI+++P'  
DTM+7:2010206:102'  
FTX+PRD+1++XZ 000Z NVD'  
PRI+AAA:304200:DI:::1:PCE'  
RNG+4+PCE:19'  
PRI+AAA:322043.69:SR:::1:PCE'  
RNG+4+PCE:1'  
PRI+AAA:322043.69:SR:::1:PCE'  
RNG+4+PCE:10'  
PRI+AAA:322043.69:SR:::1:PCE'  
RNG+4+PCE:100'  
LIN+2++PRODUCT 2:VP:::91'  
IMD+F++TU:::PRODUCT 2 DESCRIPTION'  
ALI+++P'  
DTM+7:20100703:102'  
FTX+PRD+1++FMC068C NVD'  
PRI+AAA:144000:DI:::1:PCE'  
RNG+4+PCE:1'  
PRI+AAA:215235.23:SR:::1:PCE'  
RNG+4+PCE:1'  
PRI+AAA:215235.23:SR:::1:PCE'  
RNG+4+PCE:10'  
PRI+AAA:184487.34:SR:::1:PCE'  
RNG+4+PCE:100'  
LIN+3++PRODUCT 3:VP:::91'  
IMD+F++TU:::PRODUCT 3 DESCRIPTION'  
ALI+++P'  
DTM+7:20100703:102'  
FTX+PRD+1++FMC068C NVD'  
PRI+AAA:205200:DI:::1:PCE'  
RNG+4+PCE:1'  
PRI+AAA:307478.9:SR:::1:PCE'  
RNG+4+PCE:1'  
PRI+AAA:307478.9:SR:::1:PCE'  
RNG+4+PCE:10'  
PRI+AAA:307478.9:SR:::1:PCE'  
RNG+4+PCE:100'  
UNT+49+0001'  
UNZ+1+66'
```

Example 2 PRICAT 'change' function

UNB+UNOW:4+234567891:1:X+198765432:1:X+971201:1924+66+X:AA+PRICAT++1+X+1'
UNH+0001+PRICAT:D:10A:UN:EDPC10'
BGM+9+000000000016+4'
DTM+7:20100818:102'
DTM+137:20100818:102'
NAD+SE+AMD::91'
NAD+BY+8713381138577::9'
CUX+2:ITL:8'
PGI+2'
LIN+1+1+PRODUCT 99:VP::91'
IMD+F++TU::PRODUCT 99 DESCRIPTION'
ALI+++E2'
DTM+7:20100831:102'
PRI+AAA:104200:DI::1:PCE'
RNG+4+PCE:1'
PRI+AAA:122043.69:SR::1:PCE'
RNG+4+PCE:1'
PRI+AAA:122043.69:SR::1:PCE'
RNG+4+PCE:10'
PRI+AAA:122043.69:SR::1:PCE'
RNG+4+PCE:100'
LIN+2+2+PRODUCT 2:VP::91'
LIN+3+3+PRODUCT 3:VP::91'
IMD+F++TU::PRODUCT 3 DESCRIPTION'
ALI+++P'
DTM+7:20100818:102'
FTX+PRD+1++FMC068C NVD'
PRI+AAA:207200:DI::1:PCE'
RNG+4+PCE:1'
PRI+AAA:309478.9:SR::1:PCE'
RNG+4+PCE:1'
PRI+AAA:309478.9:SR::1:PCE'
RNG+4+PCE:10'
PRI+AAA:309478.9:SR::1:PCE'
RNG+4+PCE:100'
UNT+35+0001'
UNZ+1+66'