



The Global Network for B2B Integration in High Tech Industries

EDIFICE Message Implementation Guideline International Multimodal Status Report Message

IFTSTA Issue EDST10

Endorsed on 15 June 2011

Based on UN/EDIFACT D.10A IFTSTA message

Copyright ©EDIFICE 2011

All rights reserved. No part of this publication may be reproduced or transmitted in any form or by any means without prior permission of EDIFICE.

Notwithstanding the fact that the utmost care has been observed in the collecting, drawing up and formulating of data, EDIFICE can under no circumstances be held liable for errors, omissions or misinterpretations as a result of the information compiled in the guidelines.

EDIFICE
The Global Network for B2B Integration in High Tech industries
EDIFICE secretariat
Dora Cresens
Tiensestraat 12
B-3320 Hoegaarden
Belgium
Tel: +32 475 85 40 39
Email: Dora.Cresens@edifice.org

TABLE OF CONTENTS

COMPARISON TO PREVIOUS ISSUE	3
EDIFICE FUNCTIONAL DEFINITION.....	5
REFERENCES	8
EXPLANATORY NOTES	8
MESSAGE STRUCTURE CHART	9
BRANCHING DIAGRAM	10
SEGMENT DESCRIPTION.....	13
SEGMENT DETAILS.....	16
EXAMPLES	45

COMPARISON TO PREVIOUS ISSUE

Issue EDST10 of 1 June 2011: Upgrade to UN/EDIFACT Directory D.10A

Structural changes in D.10A: Renaming of SG4 to SG13
SG5-ST5-RFF-DTM-NAD-LOC-SG6-SG7-SG8 is renamed to SG14

D.97A Structure

—	SG4		R..99999
	CNI	CONSIGNMENT INFORMATION	M1
	CNT	CONTROL TOTAL	A..3
	—	SG5	M..9
	STS	STATUS	M1
	RFF	REFERENCE	O..9
	DTM	DATE/TIME/PERIOD	O1
	NAD	NAME AND ADDRESS	O1
	LOC	PLACE/LOCATION IDENTIFICATION	O1

D.10A Structure

—	SG13		R..99999
	CNI	Consignment information	M1
	CNT	Control total	A..3
	—	SG14	M..9
	STS	Status	M1
	RFF	Reference	O..9
	DTM	Date/time/period	O1
	—	SG15	O1
	NAD	Name and address	O1
	LOC	Place/location identification	O1

EDIFICE recommends to make use of EDIFACT code lists.

1. Where possible the earlier references to UN/ECE Recommendations were removed and EDIFACT qualifiers are used instead.
2. A number of EDIFICE defined qualifiers were replaced with relevant EDIFACT qualifiers or were completely removed when not in use. In some cases new EDIFICE qualifiers were defined since the old qualifiers have been included in the EDIFACT code list with a different definition

The summary of changes in this MIG is listed below:

Place	EDIFICE Code (*)	Replaced with EDIFACT code/EDIFICE code (*)/Removed/Added
All DTM-2005	X03=CCYYMMDDHHMMZZZZZ (*) X04=CCYYMMDDHHMMSSZZZZZ (*)	205=CCYYMMDDHHMMZHHMM Removed
SG15-NAD	GG=Warehouse	WH=Warehouse keeper
SG14-LOC-1131	163=Country sub-entity	Removed: Code list 1131 no longer exists

Issue EDST04 of 1 June 2005:

- Upgrade to UN/EDIFACT Code list D.04B
- Replacement of EDIFICE codes with standard codes.
- SG9 - GID - DE 7065:
 - 'CN' Container replaced with 'CN' Container, not otherwise specified as transport equipment
 - 'PE' Pallet replaced with 'PX' Pallet

Issue EDST03 - 21 May 2003 contains the possibility to specify multiple license plates per parcel

- Occurrence of SG 12 was increased to 99 as specified by UN/EDIFACT
- EDIFICE Utilisation for SG7 DIM; CDE C211 changed from 'R' to 'M' according to UN/EDIFACT specifications – this does not affect the functionality of the message.
- EDIFIX 4.2 Technical upgrade; review and correction of examples

Issue EDST02 - 29 May 2002 – addition of recommended set of DTM qualifiers

Issue EDST02 - 9 November 2001 : Addition of the UN/EDIFACT qualifiers related to License Plate included in the UN/EDIFACT D.01A Code list.

- Addition of the following code values:

SG23, GIN segment, DE 7405, codes 'VZ' = Transport unit identification according to ISO/IEC 15459 - Data Identifier 'J'

'WA' = Indivisible transport unit according to ISO/IEC 15459 - Data Identifier '1J'

'WB' = Divisible transport unit according to ISO/IEC 15459 Data Identifier '2J'

- The examples have been updated according the additional qualifiers for license plate.

24 November 1999 :

Addition of UN/ECE Recommendation No 21 qualifiers in SG9 GID C213/7065

BA = Barrel

CN = Container (*)

PE = Pallet (*)

RO = Roll

(*) EDIFICE code, not included in UN/ECE Recommendation No. 21

EDIFICE FUNCTIONAL DEFINITION

Introduction

This message fits within the Transport Process of the Physical Distribution Business Area (see the *Physical Distribution Business and Information Model Guideline* for further details).

The message provides the capability during the movement of goods for the carrier/Freight Forwarder to report the transport status and/or a change in the transport status e.g. transshipment activities or serious deviations from plan, to the Consignor (Seller), the Consignee (Buyer), and any other agreed parties. It can also be used by the Consignee to provide the carrier/Freight Forwarder with proof of delivery.

Principles

- This message allows for the exchange of information regarding the status of the physical movement of consignments, goods or equipment at any point (in time or place) within the full transport chain.
- A status message may be sent:
 - as the result of request/s for consignment/s or equipment status/es
 - on a scheduled basis at predetermined times - on the occurrence of a selected event/s
 - on the occurrence of an exceptional event as agreed by the partners involved.
- This message can relate to a status (or statuses) that has or have been reached in a transport chain.
- In this guideline Proof of Delivery is meant to be an electronic representation that the consignee has accepted the goods. It is not the document itself.
- The three elements in the physical representation of the message are; consignment, shipment, and transport package. Their associations can be described as:-

Consignment/Shipment

- A consignment can contain one or more shipments
- A shipment refers to one consignment

Shipment/Transport Package

- A Shipment contains one or more Transport Packages
- A Transport Package pertains to one and only one Shipment

Recommended Usage

Freight Forwarder/Carrier to Consignee

- To inform about the precise status of the transport or unexpected facts.

Freight Forwarder/Carrier to Consignor

- To inform about the precise status of the transport or unexpected facts.
- As proof of delivery.

Consignee to Freight Forwarder/Carrier

- As proof of delivery.

Business Scenarios

Scenario 1:

The Carrier/Freight Forwarder is requested by the consignor, to execute the physical delivery of goods from the consignor (shipping location) to the consignee (receiving location). This scenario does not relate to any incoterm but concentrates on the consignor arranging and paying for the transport service provided by the freight forwarder/carrier.

Roles of Parties involved

Consignor

Has the responsibility and the concern with arranging transport or paying for same.

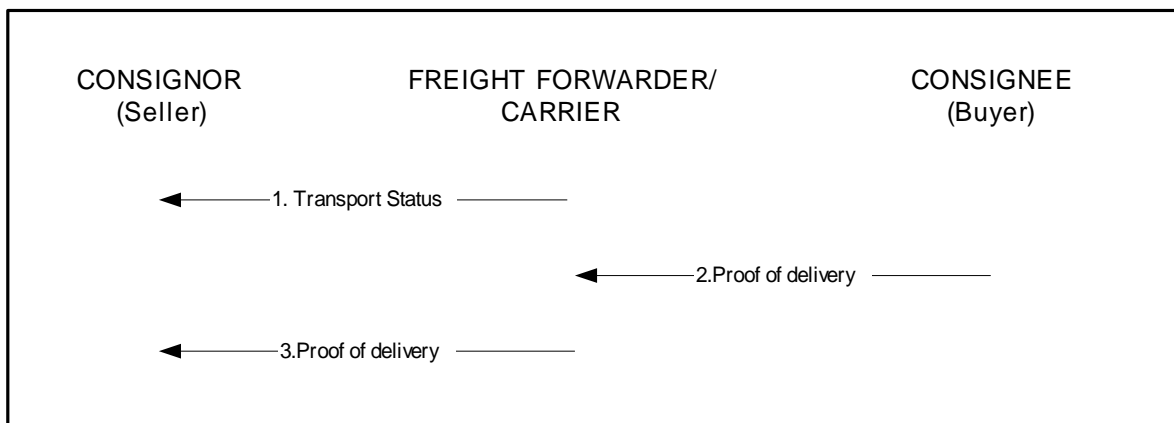
Consignee

Has minimal responsibility and no concern with arranging transport.

Freight Forwarder/Carrier

Will act on instructions given by consignor with regard to the collection, transport and delivery of the goods.

Information Flow Diagram for IFTSTA message



Goods on the Move

1. During the transport the carrier can inform the consignor about the precise status of the transport or unexpected facts. This reporting can be by exception or based on ad-hoc requests for follow-up information.

Goods delivered to consignee

- As proof of delivery from consignee to carrier.
- As proof of delivery from carrier to consignor.

Scenario 2:

The Carrier/Freight Forwarder is requested by the consignee to execute the physical delivery of goods from the consignor (shipping location) to the consignee (receiving location – shipped to). This scenario does not relate to any incoterm but concentrates on the consignee arranging and paying for the transport service provided by the freight forwarder/carrier.

Roles of Parties involved

Consignor

Has minimal responsibility in this scenario as he has no concern with arranging transport. He must simply notify the consignee that the goods are ready for despatch.

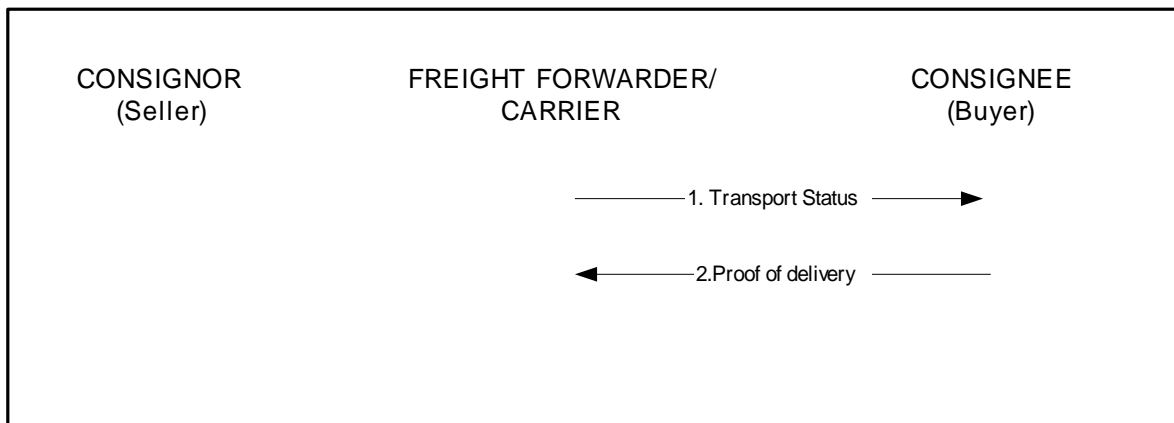
Consignee

Becomes far more involved as he has to arrange and pay for transportation

Freight Forwarder/Carrier

Will act on instructions given by consignee with regard to the collection, transport and delivery.

Information Flow Diagram for IFTSTA Message



Goods on the Move

- 1. During the transport the carrier can inform the consignee about the precise status of the transport or unexpected facts. This reporting can be by exception or based on ad-hoc requests for follow-up information.

Goods delivered to consignee

- 2. As proof of delivery from consignee to carrier.

REFERENCES

Refer to the document : Reference list for the EDIFICE message guidelines – Issue 1

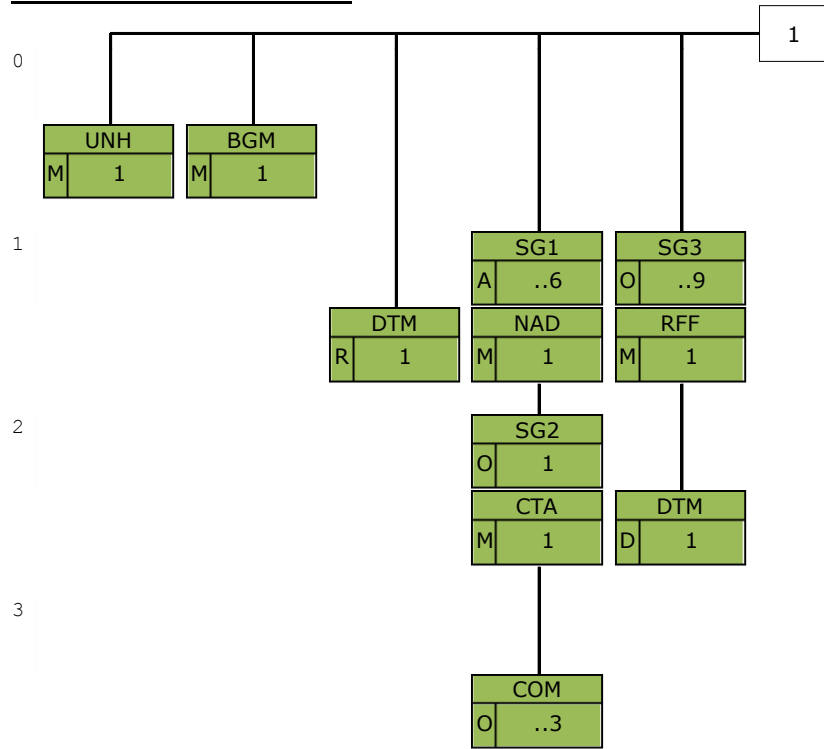
EXPLANATORY NOTES

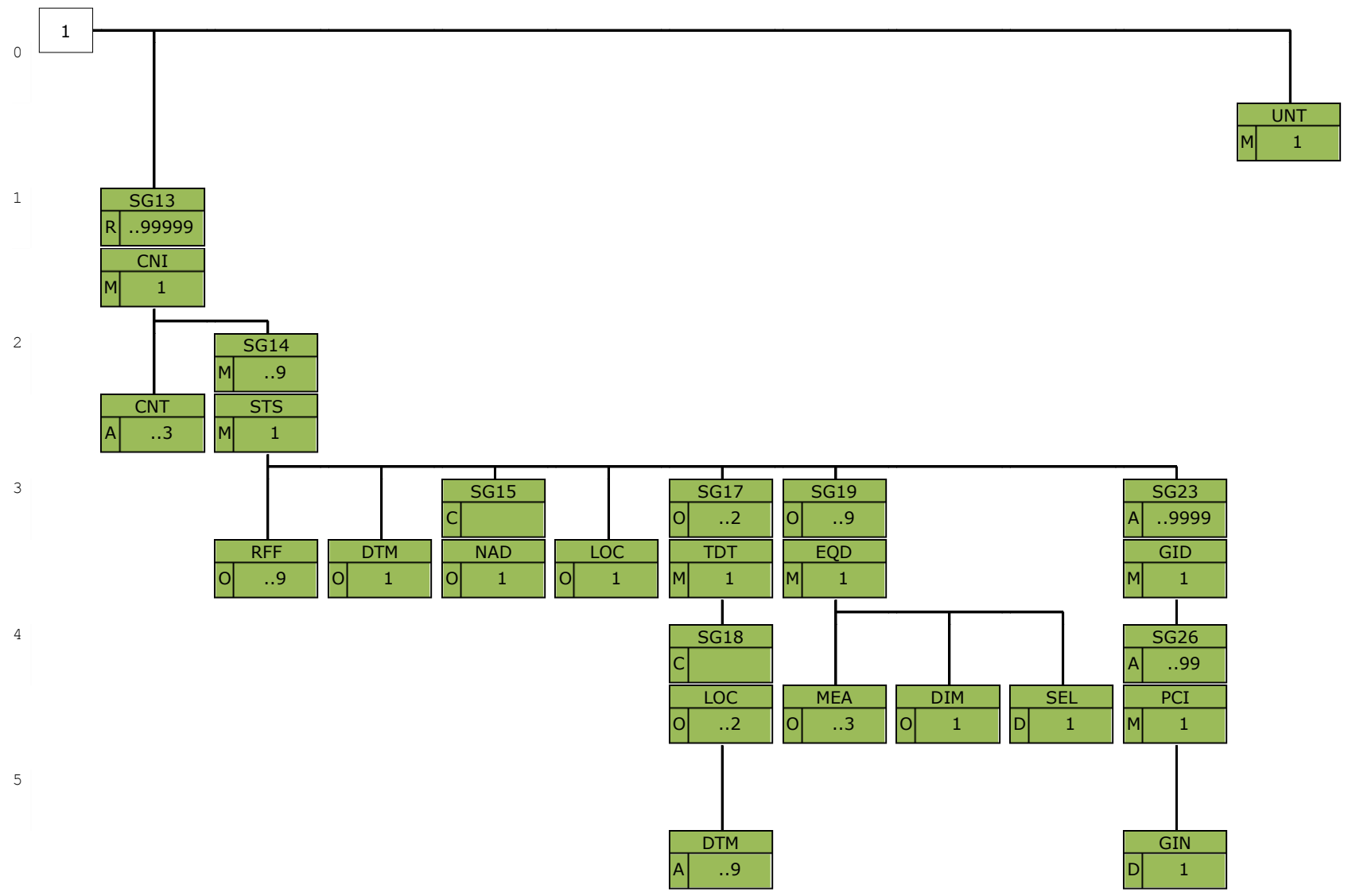
Refer to the document : Explanatory notes for the EDIFICE message guidelines – Issue 1

MESSAGE STRUCTURE CHART

	UNH	Message header	M1
	BGM	Beginning of message	M1
	DTM	Date/time/period	R1
┌──	SG1		A..6
│	NAD	Name and address	M1
└─┬──	SG2		O1
│	CTA	Contact information	M1
└─┬──	COM	Communication contact	O..3
┌──	SG3		O..9
│	RFF	Reference	M1
└─┬──	DTM	Date/time/period	D1
┌──	SG13		R..99999
│	CNI	Consignment information	M1
│	CNT	Control total	A..3
└─┬──	SG14		M..9
│	STS	Status	M1
│	RFF	Reference	O..9
│	DTM	Date/time/period	O1
└─┬──	SG15		O1
│	NAD	Name and address	O1
│	LOC	Place/location identification	O1
└─┬──	SG17		O..2
│	TDT	Transport information	M1
└─┬──	SG18		C
│	LOC	Place/location identification	O..2
└─┬──	DTM	Date/time/period	A..9
┌──	SG19		O..9
│	EQD	Equipment details	M1
│	MEA	Measurements	O..3
│	DIM	Dimensions	O1
└─┬──	SEL	Seal number	D1
┌──	SG23		A..9999
│	GID	Goods item details	M1
└─┬──	SG26		A..99
│	PCI	Package identification	M1
└─┬──	GIN	Goods identity number	D1
	UNT	Message trailer	M1

BRANCHING DIAGRAM





SEGMENT DESCRIPTION

UNH Message header

Function: A service segment heading, and uniquely identifying the message.
Usage: M 1

BGM Beginning of message

Function: A segment uniquely identifying the message by means of its coded name, number and function.
Usage: M 1

DTM Date/time/period

Function: A segment specifying the date/time of creation of the message.
Usage: R 1

SG1 NAD-SG2

Function: A group of segments identifying the parties involved and their associated information, relevant to the whole message.
Usage: A ..6
Notes:

NAD Name and address

Function: A segment identifying the function and coded identification, name and address of a party involved.
Usage: M 1

SG2 CTA-COM

Function: A group of segments giving contact details of the specific person or department within the identified party involved, to whom communication should be directed.
Usage: O 1
Notes:

CTA Contact information

Function: A segment identifying a person or department, and their function.
Usage: M 1

COM Communication contact

Function: A segment identifying a communications type and number.
Usage: O ..3

SG3 RFF-DTM

Function: A group of segments referencing documents and their dates/times, relating to the entire consignment.
Usage: O ..9
Notes:

RFF Reference

Function: A segment specifying a document reference number.
Usage: M 1

DTM Date/time/period

Function: A segment specifying the date/time of the reference document.
Usage: D 1

SG13 CNI-CNT-SG14

Function: A group of segments identifying a consignment and status details relating to it.
Usage: R ..99999
Notes:

CNI Consignment information

Function: A segment identifying a consignment for which status details are given.
Usage: M1

CNT Control total

Function: A segment specifying the quantity of packages within the entire consignment as a control on the integrity of the message.
Usage: A..3

SG14 STS-RFF-DTM-SG15-LOC-SG17-SG19-SG23

Function: A group of segments indicating the status and/or identifying an event and specifying relevant details.
Usage: M..9
Notes:

STS Status

Function: A segment specifying the status relating to a consignment (e.g. loaded).
Usage: M1

RFF Reference

Function: A segment identifying a reference related to the status.
Usage: O..9

DTM Date/time/period

Function: A segment specifying the date/time of the event.
Usage: O1

SG15 NAD

Function: A group of segments to identify a party and contact details associated with the event
Usage: O1

NAD Name and address

Function: A segment specifying the name and/or address associated with the event such as notify party, terminal address, trucking company for gate move.
Usage: O1

LOC Place/location identification

Function: A segment identifying the location at which the status or event occurs.
Usage: O1

SG17 TDT-SG18

Function: A group of segments indicating transport details related to the status or event.
Usage: O..2
Notes:

TDT Transport information

Function: A segment identifying conveyance related to the status of event such as flight, vessel/voyage.
Usage: M1

SG18 LOC-DTM

Function:
Usage: C
Notes:

LOC Place/location identification

Function: A segment indicating locations related to conveyance such as flight origin/destination.

Usage: O..2

DTM Date/time/period

Function: A segment indicating dates related to conveyance such as destination and/or arrival date/time.
Usage: A..9

SG19 EQD-MEA-DIM-SEL

Function: A group of segments indicating the equipment details relating to the status or event.
Usage: O..9
Notes: The SEL segment is used if a seal has been placed on the equipment.

EQD Equipment details

Function: A segment identifying equipment related to status or event such as a container of a multi-container consignment.
Usage: M1

MEA Measurements

Function: A segment specifying a measurement, other than dimensions, associated with the identified unit of equipment.
Usage: O..3

DIM Dimensions

Function: A segment specifying gross dimensions, associated with the identified unit of equipment.
Usage: O1

SEL Seal number

Function: A segment specifying a seal number and party responsible, for the identified unit of equipment.
Usage: D1

SG23 GID-SG26

Function: A group of segments describing the goods item related to the status or event.
Usage: A..9999
Notes: At present the maximum occurrence of this segment group is 99. EDIFICE will raise a DMR to increase the number of occurrences to 9999.

GID Goods item details

Function: A segment describing the number and package type for the goods item.
Usage: M1

SG26 PCI-GIN

Function: A group of segments specifying packaging identification numbers and shipping marks.
Usage: A..99
Notes: When this information is bar coded, it must be preceded by the appropriate data identifiers.

PCI Package identification

Function: A segment specifying packaging identification numbers or shipping marks for the goods item.
Usage: M1

GIN Goods identity number

Function: A segment specifying the license plate number.
Usage: D1

UNT Message trailer

Function: A service segment ending, and providing information for checking the completeness of a message.
Usage: M1

SEGMENT DETAILS



UNH Message header

Function: A service segment heading, and uniquely identifying the message.

Usage : M1

Notes : Refer to the EDIFICE utilisation of the UN/EDIFACT Service segments, Issue EDSS10

Ref.	Rep.	Name		EDIFICE Utilisation
0062	an..14	M MESSAGE REFERENCE NUMBER	M	Transmission message count from 1
S009		M MESSAGE IDENTIFIER	M	
0065	an..6	M Message type	M	IFTSTA = International multimodal status report message D = Draft version/UN/EDIFACT Directory 10A = Release 2010 - A UN = UN/CEFACT EDST10 = International multimodal status report Issue EDST10
0052	an..3	M Message version number	M	
0054	an..3	M Message release number	M	
0051	an..3	M Controlling agency, coded	M	
0057	an..6	C Association assigned code	R	
0110	an..6	C Code list directory version number	N	
0113	an..6	C Message type sub-function identification	N	
0068	an..35	C COMMON ACCESS REFERENCE	N	
S010		C STATUS OF THE TRANSFER	N	
0070	n..2	M Sequence of transfers	N	
0073	a1	C First and last transfer	N	
S016		C MESSAGE SUBSET IDENTIFICATION	N	
0115	an..14	M Message subset identification	N	
0116	an..3	C Message subset version number	N	
0118	an..3	C Message subset release number	N	
0051	an..3	C Controlling agency, coded	N	
S017		C MESSAGE IMPLEMENTATION GUIDELINE IDENTIFICATION	N	
0121	an..14	M Message implementation guideline identification	N	
0122	an..3	C Message implementation guideline version number	N	
0124	an..3	C Message implementation guideline release number	N	
0051	an..3	C Controlling agency, coded	N	
S018		C SCENARIO IDENTIFICATION	N	
0127	an..14	M Scenario identification	N	
0128	an..3	C Scenario version number	N	
0130	an..3	C Scenario release number	N	
0051	an..3	C Controlling agency, coded	N	

BGM Beginning of message

Function: A segment uniquely identifying the message by means of its coded name, number and function.

Usage : M1

Notes :

Ref.	Rep.	Name		EDIFICE Utilisation
C002		C DOCUMENT/MESSAGE NAME	R	
1001	an..3	C Document name code	R	44 = Transport status report <i>A message to report the transport status and/or change in the transport status (i.e. event) between parties.</i>
1131	an..17	C Code list identification code	N	
3055	an..3	C Code list responsible agency code	N	
1000	an..35	C Document name	N	
C106		C DOCUMENT/MESSAGE IDENTIFICATION	R	
1004	an..70	C Document identifier	R	Transport status report number assigned by the document sender.
1056	an..9	C Version identifier	N	
1060	an..6	C Revision identifier	N	
1225	an..3	C MESSAGE FUNCTION CODE	R	9 = Original
4343	an..3	C RESPONSE TYPE CODE	N	

DTM Date/time/period

Function: A segment specifying the date/time of creation of the message.

Usage : R 1

Notes : Refer to the "EDIFICE Utilisation of the Time Zone Specification".

Ref.	Rep.	Name		EDIFICE Utilisation
C507		M DATE/TIME/PERIOD	M	
2005	an..3	M Date or time or period function code qualifier	M	137 = Document issue date time
2380	an..35	C Date or time or period text	R	
2379	an..3	C Date or time or period format code	R	102 = CCYYMMDD 102 = CCYYMMDD 203 = CCYYMMDDHHMM 205 = CCYYMMDDHHMMZHHMM <i>Replaces EDIFICE code</i> <i>X03=CCYYMMDDHHMMZZZZ</i> 303 = CCYYMMDDHHMMZZZ <i>ZZZ = Time zone</i> 304 = CCYYMMDDHHMMSSZZZ <i>ZZZ = Time zone</i>

SG1 NAD-SG2
NAD Name and address

Function: A segment identifying the function and coded identification, name and address of a party involved.

Usage : M1

Notes : It is advised that the party identification CO C082 be used. When CO C082 cannot be used it is recommended to use the structured name and address CO C080 through DE 3207 rather than the unstructured one CO C058.

Ref.	Rep.	Name		EDIFICE Utilisation
3035	an..3	M PARTY FUNCTION CODE QUALIFIER	M	AA = Party to be billed (AAR Accounting rule 11) AG = Agent AK = Acknowledgement recipient BS = Bill and ship to BY = Buyer CA = Carrier CM = Customs CN = Consignee CZ = Consignor DP = Delivery party <i>This is the 'ship to' address.</i> FP = Freight/charges payer FW = Freight forwarder IB = Intermediary/broker NI = Notify party PW = Despatch party <i>Where the goods are collected from, if not identical with consignor</i> SE = Seller SF = Ship from
C082		C PARTY IDENTIFICATION DETAILS	A	
3039	an..35	M Party identifier	M	
1131	an..17	C Code list identification code	N	
3055	an..3	C Code list responsible agency code	R	9 = GS1 16 = US, D&B (Dun & Bradstreet Corporation) 91 = Assigned by seller or seller's agent 92 = Assigned by buyer or buyer's agent
C058		C NAME AND ADDRESS	D	
3124	an..35	M Name and address description	M	
3124	an..35	C Name and address description	O	
3124	an..35	C Name and address description	O	
3124	an..35	C Name and address description	O	
3124	an..35	C Name and address description	O	
C080		C PARTY NAME	D	
3036	an..70	M Party name	M	
3036	an..70	C Party name	O	
3036	an..70	C Party name	O	
3036	an..70	C Party name	O	
3036	an..70	C Party name	O	
3036	an..70	C Party name	O	
3045	an..3	C Party name format code	N	
C059		C STREET	C	
3042	an..35	M Street and number or post office box identifier	M	
3042	an..35	C Street and number or post office box identifier	O	
3042	an..35	C Street and number or post office box identifier	O	
3042	an..35	C Street and number or post office box identifier	O	
3164	an..35	C CITY NAME	D	
C819		C COUNTRY SUBDIVISION DETAILS	N	
3229	an..9	C Country subdivision identifier	D	
1131	an..17	C Code list identification code	N	
3055	an..3	C Code list responsible agency code	N	
3228	an..70	C Country subdivision name	N	

3251	an..17	C	POSTAL IDENTIFICATION CODE	D	
3207	an..3	C	COUNTRY IDENTIFIER	D	Use ISO 3166, 2 alpha code

SG2 CTA-COM

CTA Contact information

Function: A segment identifying a person or department, and their function.

Usage : M1

Notes :

Ref.	Rep.	Name	EDIFICE Utilisation	
3139	an..3	C CONTACT FUNCTION CODE	R	IC = Information contact If a code is available use DE 3413, otherwise use DE 3412.
C056		C CONTACT DETAILS	R	
3413	an..17	C Contact identifier	D	
3412	an..256	C Contact name	D	

SG2 CTA-COM**COM Communication contact**

Function: A segment identifying a communications type and number.

Usage : 0..3

Notes :

Ref.	Rep.	Name		EDIFICE Utilisation
C076		M COMMUNICATION CONTACT	M	
3148	an..512	M Communication address identifier	M	
3155	an..3	M Communication means type code	M	
				EM = Electronic mail FX = Telefax TE = Telephone

SG3 RFF-DTM

RFF Reference

Function: A segment specifying a document reference number.
 Usage : M1
 Notes :

Ref.	Rep.	Name		EDIFICE Utilisation
C506		M REFERENCE	M	AAK = Despatch advice number AAM = Waybill number AAN = Delivery schedule number ACW = Reference number to previous message AWB = Air waybill number BM = Bill of lading number CMR = Road consignment note number CN = Carrier's reference number CT = Contract number CW = Package number <i>EDIFICE recommends that this code be used to indicate the License Plate i.e. the unique identification for a transport unit according to EN 1572</i> DQ = Delivery note number FF = Consignment identifier, freight forwarder assigned HWB = House waybill number IV = Invoice document identifier MB = Master bill of lading number MWB = Master air waybill number PK = Packing list number SI = SID (Shipper's identifying number for shipment) SRN = Shipment reference number UCN = Unique consignment reference number
1153	an..3	M Reference code qualifier	M	
1154	an..70	C Reference identifier	R	
1156	an..6	C Document line identifier	O	
1056	an..9	C Version identifier	N	
1060	an..6	C Revision identifier	N	

SG3 RFF-DTM**DTM Date/time/period**

Function: A segment specifying the date/time of the reference document.

Usage : D1

Notes : Refer to the "EDIFICE Utilisation of the Time Zone Specification".

Ref.	Rep.	Name		EDIFICE Utilisation
C507		M DATE/TIME/PERIOD	M	
2005	an..3	M Date or time or period function code qualifier	M	171 = Reference date/time
2380	an..35	C Date or time or period text	R	
2379	an..3	C Date or time or period format code	R	102 = CCYYMMDD 102 = CCYYMMDD 203 = CCYYMMDDHHMM 205 = CCYYMMDDHHMMZHHMM <i>Replaces EDIFICE code</i> <i>X03=CCYYMMDDHHMMZZZZZ</i> 303 = CCYYMMDDHHMMZZZ <i>ZZZ = Time zone</i> 304 = CCYYMMDDHHMMSSZZZ <i>ZZZ = Time zone</i>

SG13 CNI-CNT-SG14

CNI Consignment information

Function: A segment identifying a consignment for which status details are given.
 Usage : M1
 Notes :

Ref.	Rep.	Name	EDIFICE Utilisation	
1490	n..5	C CONSOLIDATION ITEM NUMBER	M	Number generated by the application of the sender to identify the consignment within the status report. It is recommended to start with value 1 for DE 1490 and to increment it by 1 for each consignment within the message.
C503		C DOCUMENT/MESSAGE DETAILS	R	
1004	an..70	C Document identifier	R	Consignment reference number
1373	an..3	C Document status code	N	
1366	an..70	C Document source description	N	
3453	an..3	C Language name code	N	
1056	an..9	C Version identifier	N	
1060	an..6	C Revision identifier	N	
1312	n..4	C CONSIGNMENT LOAD SEQUENCE IDENTIFIER	N	

SG13 CNI-CNT-SG14

CNT Control total

Function: A segment specifying the quantity of packages within the entire consignment as a control on the integrity of the message.

Usage : A..3

Notes :

Ref.	Rep.	Name		EDIFICE Utilisation
C270		M CONTROL	M	
6069	an..3	M Control total type code qualifier	M	7 = Total gross weight 11 = Consignment package quantity 15 = Total consignment, cube <i>Total volume</i>
6066	n..18	M Control total quantity	M	
6411	an..8	C Measurement unit code	R	CMQ = cubic centimetre FTQ = cubic foot H87 = piece INQ = cubic inch KGM = kilogram LBR = pound MTQ = cubic metre PCE = piece (*) EDIFICE Code 'PCE' is widely adopted by membership and preferred over the EDIFACT code 'H87' (*) EDIFICE code

SG14 STS-RFF-DTM-SG15-LOC-SG17-SG19-SG23

STS Status

Function: A segment specifying the status relating to a consignment (e.g. loaded).

Usage : M1

Notes :

Ref.	Rep.	Name		EDIFICE Utilisation
C601		C STATUS CATEGORY	R	
9015	an..3	M Status category code	M	1 = Transport
1131	an..17	C Code list identification code	N	
3055	an..3	C Code list responsible agency code	N	
C555		C STATUS	R	
4405	an..3	M Status description code	M	1 = To be done 12 = 2 days available 13 = 3 days available <i>Goods/consignment have been collected from a predetermined location.</i> 18 = Free of charge 20 = Permanent 21 = Temporary 22 = Subject to agreed condition 23 = Added 24 = Deducted 27 = Subject to bilaterally agreed condition 48 = Live version 49 = Expired version 71 = Available for ordering 72 = Not available for ordering 86 = Ratified 91 = Enforced 99 = Law suit filed
1131	an..17	C Code list identification code	N	
3055	an..3	C Code list responsible agency code	N	
4404	an..35	C Status description	N	
C556		C STATUS REASON	O	
9013	an..3	M Status reason description code	M	Please refer to the EDIFACT code list
1131	an..17	C Code list identification code	N	
3055	an..3	C Code list responsible agency code	R	9 = GS1 16 = US, D&B (Dun & Bradstreet Corporation) 91 = Assigned by seller or seller's agent 92 = Assigned by buyer or buyer's agent
9012	an..256	C Status reason description	N	
C556		C STATUS REASON	N	
9013	an..3	M Status reason description code	N	
1131	an..17	C Code list identification code	N	
3055	an..3	C Code list responsible agency code	N	
9012	an..256	C Status reason description	N	
C556		C STATUS REASON	N	
9013	an..3	M Status reason description code	N	
1131	an..17	C Code list identification code	N	
3055	an..3	C Code list responsible agency code	N	
9012	an..256	C Status reason description	N	
C556		C STATUS REASON	N	
9013	an..3	M Status reason description code	N	
1131	an..17	C Code list identification code	N	
3055	an..3	C Code list responsible agency code	N	
9012	an..256	C Status reason description	N	
C556		C STATUS REASON	N	
9013	an..3	M Status reason description code	N	
1131	an..17	C Code list identification code	N	
3055	an..3	C Code list responsible agency code	N	
9012	an..256	C Status reason description	N	

SG14 STS-RFF-DTM-SG15-LOC-SG17-SG19-SG23

RFF Reference

Function: A segment identifying a reference related to the status.

Usage : 0..9

Notes :

Ref.	Rep.	Name		EDIFICE Utilisation
C506		M REFERENCE	M	AAE = Goods declaration number AAK = Despatch advice number AAM = Waybill number AAN = Delivery schedule number ACW = Reference number to previous message AWB = Air waybill number BM = Bill of lading number CMR = Road consignment note number CN = Carrier's reference number CT = Contract number CW = Package number <i>EDIFICE recommends that this code be used to indicate the License Plate i.e. the unique identification for a transport unit according to EN 1572</i> DQ = Delivery note number FF = Consignment identifier, freight forwarder assigned HWB = House waybill number IV = Invoice document identifier MB = Master bill of lading number MWB = Master air waybill number PK = Packing list number SI = SID (Shipper's identifying number for shipment) SRN = Shipment reference number UCN = Unique consignment reference number
1153	an..3	M Reference code qualifier	M	
1154	an..70	C Reference identifier	R	
1156	an..6	C Document line identifier	O	
1056	an..9	C Version identifier	N	
1060	an..6	C Revision identifier	N	

SG14 STS-RFF-DTM-SG15-LOC-SG17-SG19-SG23**DTM Date/time/period**

Function: A segment specifying the date/time of the event.

Usage : 01

Notes : Refer to the "EDIFICE Utilisation of the Time Zone Specification".

Ref.	Rep.	Name		EDIFICE Utilisation
C507		M DATE/TIME/PERIOD	M	
2005	an..3	M Date or time or period function code qualifier	M	145 = Event date
2380	an..35	C Date or time or period text	R	
2379	an..3	C Date or time or period format code	R	102 = CCYMMDD 102 = CCYMMDD 203 = CCYMMDDHHMM 205 = CCYMMDDHHMMZHMM <i>Replaces EDIFICE code</i> <i>X03=CCYMMDDHHMMZZZZ</i> 303 = CCYMMDDHHMMZZZ <i>ZZZ = Time zone</i> 304 = CCYMMDDHHMMSSZZZ <i>ZZZ = Time zone</i>

SG15 NAD
NAD Name and address

Function: A segment specifying the name and/or address associated with the event such as notify party, terminal address, trucking company for gate move.

Usage : O 1

Notes : It is advised that the party identification CO C082 be used. When CO C082 cannot be used it is recommended to use the structured name and address CO C080 through DE 3207 rather than the unstructured one CO C058.

Ref.	Rep.	Name		EDIFICE Utilisation	
3035	an..3	M PARTY FUNCTION CODE QUALIFIER	M	AN = Approved importer AR = Authorized exporter AU = Authorized trader (transit) CA = Carrier CB = Customs broker CH = Connecting carrier CM = Customs CN = Consignee DP = Delivery party <i>Several drop off points for the same consignee. This is the 'ship to' address.</i> GA = Road carrier WH = Warehouse keeper 9 = GS1 16 = US, D&B (Dun & Bradstreet Corporation) 91 = Assigned by seller or seller's agent 92 = Assigned by buyer or buyer's agent	
C082		C PARTY IDENTIFICATION DETAILS	A		
3039	an..35	M Party identifier	M		
1131	an..17	C Code list identification code	N		
3055	an..3	C Code list responsible agency code	R		
C058		C NAME AND ADDRESS	D		
3124	an..35	M Name and address description	M		
3124	an..35	C Name and address description	O		
3124	an..35	C Name and address description	O		
3124	an..35	C Name and address description	O		
3124	an..35	C Name and address description	O		
C080		C PARTY NAME	D		
3036	an..70	M Party name	M		
3036	an..70	C Party name	O		
3036	an..70	C Party name	O		
3036	an..70	C Party name	O		
3036	an..70	C Party name	O		
3045	an..3	C Party name format code	N		
C059		C STREET	D		
3042	an..35	M Street and number or post office box identifier	M		
3042	an..35	C Street and number or post office box identifier	O		
3042	an..35	C Street and number or post office box identifier	O		
3042	an..35	C Street and number or post office box identifier	O		
3164	an..35	C CITY NAME	D		
C819		C COUNTRY SUBDIVISION DETAILS	N		
3229	an..9	C Country subdivision identifier	D		
1131	an..17	C Code list identification code	N		
3055	an..3	C Code list responsible agency code	N		
3228	an..70	C Country subdivision name	N		
3251	an..17	C POSTAL IDENTIFICATION CODE	D		
3207	an..3	C COUNTRY IDENTIFIER	D		
					Use ISO 3166, 2 alpha code

SG14 STS-RFF-DTM-SG15-LOC-SG17-SG19-SG23

LOC Place/location identification

Function: A segment identifying the location at which the status or event occurs.

Usage : 01

Notes : DE 8028 may be used to reference a current transport stage as identified in DE 8051, e.g. flight number.

Ref.	Rep.	Name		EDIFICE Utilisation
3227	an..3	M LOCATION FUNCTION CODE QUALIFIER	M	4 = Goods receipt place 7 = Place of delivery 10 = Place of acceptance <i>Goods taken over by the carrier</i> 13 = Place of transshipment 18 = Warehouse 22 = Customs clearance location 26 = City 27 = Country of origin 103 = Place of transfer 115 = Free zone of export
C517		C LOCATION IDENTIFICATION	R	
3225	an..35	C Location identifier	R	State/Province when DE 3227 is 10 or 22 Use ISO 3166, 2 alpha code when DE 3227 is 27 Free trade zone number when DE 3227 is 115
1131	an..17	C Code list identification code	D	
3055	an..3	C Code list responsible agency code	O	
3224	an..256	C Location name	O	
C519		C RELATED LOCATION ONE IDENTIFICATION	N	
3223	an..35	C First related location identifier	N	
1131	an..17	C Code list identification code	N	
3055	an..3	C Code list responsible agency code	N	
3222	an..70	C First related location name	N	
C553		C RELATED LOCATION TWO IDENTIFICATION	N	
3233	an..35	C Second related location identifier	N	
1131	an..17	C Code list identification code	N	
3055	an..3	C Code list responsible agency code	N	
3232	an..70	C Second related location name	N	
5479	an..3	C RELATION CODE	N	

SG17 TDT-SG18

TDT Transport information

Function: A segment identifying conveyance related to the status of event such as flight, vessel/voyage.

Usage : M1

Notes : De 8028 may be used to reference a current transport stage as identified in DE 8051, e.g. flight number. Identification such as vehicle license plate number may be provided in CO C222 DE 8212.

Ref.	Rep.	Name		EDIFICE Utilisation
8051	an..3	M TRANSPORT STAGE CODE QUALIFIER	M	10 = Pre-carriage transport 20 = Main-carriage transport 30 = On-carriage transport
8028	an..17	C MEANS OF TRANSPORT JOURNEY IDENTIFIER	A	Used for Flight or Voyage No.
C220		C MODE OF TRANSPORT	R	
8067	an..3	C Transport mode name code	R	1 = Maritime transport 2 = Rail transport 3 = Road transport 4 = Air transport 6 = Multimodal transport
8066	an..17	C Transport mode name	N	
C001		C TRANSPORT MEANS	N	
8179	an..8	C Transport means description code	N	
1131	an..17	C Code list identification code	N	
3055	an..3	C Code list responsible agency code	N	
8178	an..17	C Transport means description	N	
C040		C CARRIER	A	
3127	an..17	C Carrier identifier	A	Mutually defined code
1131	an..17	C Code list identification code	N	
3055	an..3	C Code list responsible agency code	A	3 = IATA (International Air Transport Association) 9 = GS1 11 = Lloyd's register of shipping 16 = US, D&B (Dun & Bradstreet Corporation) 91 = Assigned by seller or seller's agent 92 = Assigned by buyer or buyer's agent 166 = US, National Motor Freight Classification Association
3126	an..35	C Carrier name	D	Used if no coded name is exchanged.
8101	an..3	C TRANSIT DIRECTION INDICATOR CODE	N	
C401		C EXCESS TRANSPORTATION INFORMATION	N	
8457	an..3	M Excess transportation reason code	N	
8459	an..3	M Excess transportation responsibility code	N	
7130	an..17	C Customer shipment authorisation identifier	N	
C222		C TRANSPORT IDENTIFICATION	A	
8213	an..35	C Transport means identification name identifier	N	
1131	an..17	C Code list identification code	N	
3055	an..3	C Code list responsible agency code	N	
8212	an..70	C Transport means identification name	A	Vessel name or vehicle license number
8453	an..3	C Transport means nationality code	O	Use ISO 3166, 2 alpha code
8281	an..3	C TRANSPORT MEANS OWNERSHIP INDICATOR CODE	N	

SG18 LOC-DTM

LOC Place/location identification

Function: A segment indicating locations related to conveyance such as flight origin/destination.

Usage : 0..2

Notes :

Ref.	Rep.	Name		EDIFICE Utilisation
3227	an..3	M LOCATION FUNCTION CODE QUALIFIER	M	5 = Place of departure 7 = Place of delivery 8 = Place of destination 9 = Place of loading 11 = Place of discharge 13 = Place of transshipment 15 = Place of transfer responsibility 18 = Warehouse 19 = Factory/plant 24 = Port of entry 26 = City 28 = Country of destination of goods 50 = Transit customs office location 60 = Place of arrival 83 = Place of delivery (by on carriage)
C517		C LOCATION IDENTIFICATION	R	
3225	an..35	C Location identifier	R	Use UN/ECE Recommendation no.16, UNLOCODE. If not applicable, use codes from another appropriate code set in combination with DE 1131/3055.
1131	an..17	C Code list identification code	D	
3055	an..3	C Code list responsible agency code	D	Examples of codes are: 3 = IATA (International Air Transport Association) 91 = Assigned by seller or seller's agent 92 = Assigned by buyer or buyer's agent
3224	an..256	C Location name	O	
C519		C RELATED LOCATION ONE IDENTIFICATION	N	
3223	an..35	C First related location identifier	N	
1131	an..17	C Code list identification code	N	
3055	an..3	C Code list responsible agency code	N	
3222	an..70	C First related location name	N	
C553		C RELATED LOCATION TWO IDENTIFICATION	N	
3233	an..35	C Second related location identifier	N	
1131	an..17	C Code list identification code	N	
3055	an..3	C Code list responsible agency code	N	
3232	an..70	C Second related location name	N	
5479	an..3	C RELATION CODE	N	

SG18 LOC-DTM**DTM Date/time/period**

Function: A segment indicating dates related to conveyance such as destination and/or arrival date/time.

Usage : A..9

Notes : Refer to the "EDIFICE Utilisation of the Time Zone Specification".

Ref.	Rep.	Name		EDIFICE Utilisation
C507	M	DATE/TIME/PERIOD	M	
2005	an..3	M Date or time or period function code qualifier	M	<p>2 = Delivery date/time, requested <i>Date/time when carrier estimates when a means of transport should arrive at port of discharge or place of destination.</i></p> <p>10 = Shipment date/time, requested</p> <p>17 = Delivery date/time, estimated</p> <p>63 = Delivery date time, last</p> <p>64 = Delivery date/time, earliest</p> <p>69 = Delivery date time, promised before</p> <p>128 = Delivery date/time, last <i>Latest delivery date</i></p> <p>132 = Transport means arrival date time, estimated</p> <p>133 = Transport means departure date/time, estimated <i>Date/time when a carrier estimates that a means of transport should depart at the place of departure</i></p> <p>189 = Transport means departure date/time, scheduled</p> <p>190 = Transshipment date/time</p> <p>191 = Delivery date/time, expected</p> <p>200 = Cargo pick-up date / time <i>Used by the seller to indicate to the forwarder when the goods can be collected from the seller's premises.</i></p> <p>234 = Collection date/time, earliest</p> <p>235 = Collection date/time, latest</p>
2380	an..35	C Date or time or period text	R	
2379	an..3	C Date or time or period format code	R	<p>102 = CCYMMDD</p> <p>102 = CCYMMDD</p> <p>203 = CCYMMDDHHMM</p> <p>205 = CCYMMDDHHMMZHHMM <i>Replaces EDIFICE code</i> <i>X03=CCYMMDDHHMMZZZZ</i></p> <p>303 = CCYMMDDHHMMZZZ <i>ZZZ = Time zone</i></p> <p>304 = CCYMMDDHHMMSSZZZ <i>ZZZ = Time zone</i></p>

SG19 EQD-MEA-DIM-SEL**EQD Equipment details**

Function: A segment identifying equipment related to status or event such as a container of a multi-container consignment.

Usage : M1

Notes :

Ref.	Rep.	Name		EDIFICE Utilisation
8053	an..3	M EQUIPMENT TYPE CODE QUALIFIER	M	BPN = Box pallet non-exchangeable CN = Container EFP = Exchangeable EUR flat pallet PA = Pallet TE = Trailer UL = ULD (Unit load device)
C237		C EQUIPMENT IDENTIFICATION	R	The identification of the equipment is provided at this point.
8260	an..17	C Equipment identifier	R	
1131	an..17	C Code list identification code	N	
3055	an..3	C Code list responsible agency code	N	
3207	an..3	C Country identifier	N	
C224		C EQUIPMENT SIZE AND TYPE	N	
8155	an..10	C Equipment size and type description code	N	
1131	an..17	C Code list identification code	N	
3055	an..3	C Code list responsible agency code	N	
8154	an..35	C Equipment size and type description	N	
8077	an..3	C EQUIPMENT SUPPLIER CODE	N	
8249	an..3	C EQUIPMENT STATUS CODE	N	
8169	an..3	C FULL OR EMPTY INDICATOR CODE	N	
4233	an..3	C MARKING INSTRUCTIONS CODE	N	

SG19 EQD-MEA-DIM-SEL

MEA Measurements

Function: A segment specifying a measurement, other than dimensions, associated with the identified unit of equipment.

Usage : 0..3

Notes :

Ref.	Rep.	Name		EDIFICE Utilisation
6311	an..3	M MEASUREMENT PURPOSE CODE QUALIFIER	M	CHW = Chargeable weight LMT = Loading meters VOL = Volume WT = Weights AAA = Net weight AAB = Goods item gross weight AAC = Total net weight AAD = Consignment gross weight AAK = Fat content AAW = Gross volume CMQ = cubic centimetre FTQ = cubic foot INQ = cubic inch KGM = kilogram LBR = pound MTQ = cubic metre MTR = metre
C502		C MEASUREMENT DETAILS	R	
6313	an..3	C Measured attribute code	R	
6321	an..3	C Measurement significance code	N	
6155	an..17	C Non-discrete measurement name code	N	
6154	an..70	C Non-discrete measurement name	N	
C174		C VALUE/RANGE	R	
6411	an..8	M Measurement unit code	M	
6314	an..18	C Measure	R	
6162	n..18	C Range minimum quantity	N	
6152	n..18	C Range maximum quantity	N	
6432	n..2	C Significant digits quantity	N	
7383	an..3	C SURFACE OR LAYER CODE	N	

SG19 EQD-MEA-DIM-SEL

DIM Dimensions

Function: A segment specifying gross dimensions, associated with the identified unit of equipment.

Usage : O1

Notes :

Ref.	Rep.	Name		EDIFICE Utilisation
6145	an..3	M DIMENSION TYPE CODE QUALIFIER	M	1 = Gross dimensions CMT = centimetre INH = inch MTR = metre
C211		M DIMENSIONS	M	
6411	an..8	M Measurement unit code	M	
6168	n..15	C Length measure	R	
6140	n..15	C Width measure	R	
6008	n..15	C Height measure	R	

SG19 EQD-MEA-DIM-SEL

SEL Seal number

Function: A segment specifying a seal number and party responsible, for the identified unit of equipment.

Usage : D 1

Notes :

Ref.	Rep.	Name		EDIFICE Utilisation
9308	an..35	C TRANSPORT UNIT SEAL IDENTIFIER	M	CA = Carrier CU = Customs SH = Shipper TO = Terminal operator
C215		C SEAL ISSUER	R	
9303	an..3	C Sealing party name code	R	
1131	an..17	C Code list identification code	N	
3055	an..3	C Code list responsible agency code	N	
9302	an..35	C Sealing party name	N	
4517	an..3	C SEAL CONDITION CODE	N	
C208		C IDENTITY NUMBER RANGE	N	
7402	an..35	M Object identifier	N	
7402	an..35	C Object identifier	N	
4525	an..3	C SEAL TYPE CODE	N	

SG23 GID-SG26

GID Goods item details

Function: A segment describing the number and package type for the goods item.

Usage : M1

Notes : The segment also carries a sequence number assigned to the goods item within the message.

Ref.	Rep.	Name		EDIFICE Utilisation
1496	an..6	C GOODS ITEM NUMBER	R	Number generated by the application of the sender to identify the goods item within the status report. It is recommended to start with value 1 for DE 1496 and to increment it by 1 for each new goods item within the message.
C213		C NUMBER AND TYPE OF PACKAGES	R	
7224	n..8	C Package quantity	R	
7065	an..17	C Package type description code	A	BA = Barrel BE = Bundle BG = Bag BX = Box CG = Cage CN = Container, not otherwise specified as transport equipment CR = Crate CS = Case CT = Carton DR = Drum EN = Envelope NE = Unpacked or unpackaged PC = Parcel PK = Package PX = Pallet RL = Reel RO = Roll SW = Shrinkwrapped TU = Tube If not applicable use appropriate code set in combination with DE 1131 and DE 3055.
1131	an..17	C Code list identification code	D	
3055	an..3	C Code list responsible agency code	D	
7064	an..35	C Type of packages	D	Used if no coded type of packages is exchanged in DE 7065.
7233	an..3	C Packaging related description code	N	
C213		C NUMBER AND TYPE OF PACKAGES	N	
7224	n..8	C Package quantity	N	
7065	an..17	C Package type description code	N	
1131	an..17	C Code list identification code	N	
3055	an..3	C Code list responsible agency code	N	
7064	an..35	C Type of packages	N	
7233	an..3	C Packaging related description code	N	
C213		C NUMBER AND TYPE OF PACKAGES	N	
7224	n..8	C Package quantity	N	
7065	an..17	C Package type description code	N	
1131	an..17	C Code list identification code	N	
3055	an..3	C Code list responsible agency code	N	
7064	an..35	C Type of packages	N	
7233	an..3	C Packaging related description code	N	
C213		C NUMBER AND TYPE OF PACKAGES	N	
7224	n..8	C Package quantity	N	
7065	an..17	C Package type description code	N	
1131	an..17	C Code list identification code	N	
3055	an..3	C Code list responsible agency code	N	
7064	an..35	C Type of packages	N	
7233	an..3	C Packaging related description code	N	

C213	C	NUMBER AND TYPE OF PACKAGES	N
7224 n..8	C	Package quantity	N

Ref.	Rep.	Name	EDIFICE Utilisation
7065	an..17	C Package type description code	N
1131	an..17	C Code list identification code	N
3055	an..3	C Code list responsible agency code	N
7064	an..35	C Type of packages	N
7233	an..3	C Packaging related description code	N

SG26 PCI-GIN

PCI Package identification

Function: A segment specifying packaging identification numbers or shipping marks for the goods item.

Usage : M1

Notes : CO C210 is not used when DE 4233 is 24.

Ref.	Rep.	Name		EDIFICE Utilisation
4233	an..3	C MARKING INSTRUCTIONS CODE	R	24 = Shipper assigned
C210		C MARKS & LABELS	D	
7102	an..35	M Shipping marks description	M	
7102	an..35	C Shipping marks description	O	
7102	an..35	C Shipping marks description	O	
7102	an..35	C Shipping marks description	O	
7102	an..35	C Shipping marks description	O	
7102	an..35	C Shipping marks description	O	
7102	an..35	C Shipping marks description	O	
7102	an..35	C Shipping marks description	O	
7102	an..35	C Shipping marks description	O	
7102	an..35	C Shipping marks description	O	
8169	an..3	C FULL OR EMPTY INDICATOR CODE	N	
C827		C TYPE OF MARKING	N	
7511	an..3	M Marking type code	N	
1131	an..17	C Code list identification code	N	
3055	an..3	C Code list responsible agency code	N	

SG26 PCI-GIN

GIN Goods identity number

Function: A segment specifying the license plate number.

Usage : D1

Notes : When using bar coding this information relates to the appropriate data identifiers that indicate License plate.

Ref.	Rep.	Name	EDIFICE Utilisation
7405	an..3	M OBJECT IDENTIFICATION CODE QUALIFIER	M ML = Marking/label number VZ = Transport unit identification according to ISO/IEC 15459 WA = Indivisible transport unit according to ISO/IEC 15459 WB = Divisible transport unit according to ISO/IEC 15459
C208		M IDENTITY NUMBER RANGE	M The first DE 7402 in the composite data element is the start of the consecutively numbered range, the second DE 7402 indicates the end of the range. If there is no range only the first DE 7402 is used. If the identity numbers are not sequential and part of a series (e.g. 1,3,10) then a separate CO C208 and DE 7402 must be used for each identity number.
7402	an..35	M Object identifier	M
7402	an..35	C Object identifier	D
C208		C IDENTITY NUMBER RANGE	O As for first CO C208
7402	an..35	M Object identifier	M
7402	an..35	C Object identifier	D
C208		C IDENTITY NUMBER RANGE	O As for first CO C208
7402	an..35	M Object identifier	M
7402	an..35	C Object identifier	D
C208		C IDENTITY NUMBER RANGE	O As for first CO C208
7402	an..35	M Object identifier	M
7402	an..35	C Object identifier	D
C208		C IDENTITY NUMBER RANGE	O As for first CO C208
7402	an..35	M Object identifier	M
7402	an..35	C Object identifier	D

UNT Message trailer

Function: A service segment ending, and providing information for checking the completeness of a message.

Usage : M1

Notes : Refer to the EDIFICE utilisation of the UN/EDIFACT Service segments, Issue EDSS10

Ref.	Rep.	Name	EDIFICE Utilisation	
0074	n..10	M NUMBER OF SEGMENTS IN A MESSAGE	M	Count of all segments in the message, UNH and UNT included.
0062	an..14	M MESSAGE REFERENCE NUMBER	M	Must be the same reference number as in DE 0062 of the UNH segment of this message.

EXAMPLES

EXAMPLE 1

This example can be used in conjunction with Example 3 (International shipment going by truck) of the EDIFICE IFTMIN guideline. In this example the message is used by the Freight Forwarder to indicate to the consignor that there has been a delay in the departure of the consignment. The scheduled departure is given along with the new estimated date and time of the arrival.

UNB+UNOW:4+123456789:1:X+987654321:1:X+021209:1909+88+X:AA+IFTSTA++1+X+1'	
UNH+1+IFTSTA:D:910:UN:EDST10'	Message header
BGM+44+FW1402+9'	Status report number assigned by FF
DTM+137:201002110730:203'	Creation date/time of message
NAD+CZ+CONSIGNOR-01::91'	Consignor's code
NAD+FW+FORWARDER-01::91'	Freight forwarder's code
CTA+IC+JOE SMITH:CUSTOMER SERVICE'	Contact at Freight Forwarder
COM+5104992134:TE'	Telephone number of contact
RFF+SRN:AB12355'	Shipment reference number
DTM+171:20100210:102'	Date of reference
CNI+1+AB12355'	Consignment number
CNT+7:501:KGM'	Weight of consignment
CNT+11:3:PCE'	Number of pieces
CNT+15:1.728:MTQ'	Total volume
STS+1+20+17'	Departure delayed
TDT+20+++3+++UPS'	Road transport
LOC+5+HEK::3'	Departure place
LOC+8+FRA::3'	Place of destination
DTM+189:201002110200:203'	Scheduled departure
DTM+132:201002122000:203'	Estimated arrival
GID+1+3:CS'	Three cases
PCI+24'	Trigger for License plate numbers
GIN+VZ+LEABC123882:	License plate numbers
LEABC123883+LEABCCD554677'	
UNT+23+1'	Count of segments
UNZ+1+88'	

EXAMPLE 2

This example relates to proof of delivery event status. Forwarder 'TCI6900' is reporting the delivery state for 2 consignments (CNI 1,2). These consignments are part of the master way bill 'AP900'. The first consignment was partly delivered (3 parcels out of 5). Departure has been delayed for the remaining parcels.

UNB+UNOW:4+123456789:1:X+987654321:1:X+021209:1909+88+X:AA+IFTSTA++1+X+1'
UNH+ST51+IFTSTA:D:10A:UN:EDST10' Message Header
BGM+44+6658+9' Number assigned by FF
DTM+137:201012011500?+0100:X03' Creation date/time of message

NAD+FW+TCI6900::9' FF's code

CTA+IC+MURPHY BROWN:CUSTOMER Contact at FF
SERVICE'
COM+0014124870020:TE' Telephone number of contact

RFF+MWB:AP900' Master Way Bill number
DTM+171:201012011200?+0100:X03' Date of MWB

CNI+1+TG4325' First consignment
CNT+11:2:PCE' Number of parcels described in this consignment

STS+1+20' Status : Departure delayed
RFF+SI:REFNUM10746' Reference number
DTM+145:201012151300?+0100:X03' Event date and time
NAD+CN+690001563++SUPERDISTY INC' Consignee's code

GID+1+2:PC' Number of parcels

PCI+24+BOX8' Shipping marks
GIN+VZ+LESTM98765782' License plate number

PCI+24+BOX1' Shipping marks
GIN+VZ+LESTM76543711' License plate number

STS+1+72' Status : Receipt fully acknowledged
DTM+145:201012151400?+0100:X03' Event date and time
NAD+DP+690001263++JONES' Delivery party

GID+2+3:PC' Number of parcels (same consignment)

PCI+24+1234:1235:1236' Shipping marks
GIN+VZ+LESTM12345782:LESTM1234578 License plate numbers
4'

CNI+2+TG4326' Second consignment
CNT+11:16:PCE' Number of pieces

STS+1+72' Status : Receipt fully Acknowledged
RFF+SI:REFNUM11355' Reference number
DTM+145:201012151500?+0100:X03' Event date and time
NAD+CN+690001877++SUPERDISTY INC' Consignee's code

GID+3+1:PC' Number of parcels

PCI+24+BOX1234' Shipping marks
GIN+VZ+LESTM98765432' License plate number
UNT+35+ST51' Count of segments
UNZ+1+88'

EXAMPLE 3

This example of the message allows the Freight Forwarder to indicate to the consignor that the consignment has arrived at its destination.

UNB+UNOW:4+123456789:1:X+987654321:1:X+021209:1909+88+X:AA+IFTSTA++1+X+1'	
UNH+1+IFTSTA:D:10A:UN:EDST10'	Message Header
BGM+44+12345+9'	Number assigned by FF
DTM+137:201011300730:203'	Creation date/time of message
NAD+FW+UPS::9'	Address of Freight Forwarder
CTA+IC+OE SMITH:CUSTOMER SERVICE'	Contact at FF
COM+5104992134:TE'	Telephone number of contact
RFF+AAK:AS35724'	Despatch advise number
DTM+171:201011290915:203'	Date of DESADV
CNI+1+TG4325'	Consignment reference number
CNT+7:30:KGM'	Total gross weight
STS+1+1'	Consignment arrived
RFF+AWB:AW35724'	Air Way Bill number
DTM+145:20101129:102'	Date of arrival
LOC+4+MUNICH:163'	Goods receipt place
TDT+10+ABCXX64773+4'	Flight number
LOC+5+MUNICH::3'	Departed from Munich
DTM+2:201011290930:203'	Requested delivery date/time
EQD+BPN+BX123'	Identification of pallet
MEA+WT+AAB+KGM:750'	Gross weight of pallet
DIM+1+MTR:22:10:10'	Dimension of pallet
SEL+1SN+CA'	Seal number
GID+1+15612:BE'	Number of bundles
PCI+24+BOX1'	Marking on pallet
GIN+VZ+LEMOT123456789012345'	License plate number
UNT+25+1'	Count of segments
UNZ+1+88'	