



The Global Network for B2B Integration in High Tech Industries

EDIFICE Message Implementation Guideline International Forward & Transport Message, Arrival Notice

IFTMAN Issue EDAN10

Endorsed on 15 June 2011

Based on UN/EDIFACT D.10A IFTMAN message

Copyright ©EDIFICE 2011

All rights reserved. No part of this publication may be reproduced or transmitted in any form or by any means without prior permission of EDIFICE.

Notwithstanding the fact that the utmost care has been observed in the collecting, drawing up and formulating of data, EDIFICE can under no circumstances be held liable for errors, omissions or misinterpretations as a result of the information compiled in the guidelines.

EDIFICE
The Global Network for B2B Integration in High Tech industries
EDIFICE secretariat
Dora Cresens
Tiensestraat 12
B-3320 Hoegaarden
Belgium
Tel: +32 475 85 40 39
Email: Dora.Cresens@edifice.org

TABLE OF CONTENTS

COMPARISON TO PREVIOUS ISSUE 3
EDIFICE FUNCTIONAL DEFINITION 4
REFERENCES 5
EXPLANATORY NOTES 5
MESSAGE STRUCTURE CHART..... 6
BRANCHING DIAGRAM 7
SEGMENT DESCRIPTION 9
SEGMENT DETAILS 12
EXAMPLES 37

COMPARISON TO PREVIOUS ISSUE

Issue EDAN10 of 1 June 2011: Upgrade to UN/EDIFACT Directory D.10A

EDIFICE recommends to make use of EDIFACT code lists.

1. Where possible the earlier references to UN/ECE Recommendations were removed and EDIFACT qualifiers are used instead.
2. A number of EDIFICE defined qualifiers were replaced with relevant EDIFACT qualifiers or were completely removed when not in use. In some cases new EDIFICE qualifiers were defined since the old qualifiers have been included in the EDIFACT code list with a different definition

The summary of changes in this MIG is listed below:

Place	EDIFICE Code (*)	Replaced with EDIFACT code/EDIFICE code (*)/Removed/Added
All DTM-2005	X03=CCYMMDDHHMMZZZZ (*) X04=CCYMMDDHHMMSSZZZZ (*)	205=CCYMMDDHHMMZHHMM Removed
MOA		Correction of error: moved Currency qualifiers from 4405 into 6343 Usage 6343 usage O instead of N
SG9-DTM	Occurrence 1	Occurrence 9
SG18	Occurrence 999	Occurrence 99999
SG20-MEA-6313	AAK=Loading Meter	ACV=Loading Meters

Issue EDAN03 of 1 June 2005:

- Upgrade to UN/EDIFACT Code list D.04B

Replacement of EDIFICE codes with standard codes.

- SG18 - GID - DE 7065:

'CN' Container replaced with 'CN' Container, not otherwise specified as transport equipment

'PE' Pallet replaced with 'PX' Pallet

21 May 2003 : - EDIFIX 4.2 Technical upgrade; review and correction of examples

29 May 2002 – recommended set of DTM qualifiers

9 November 2001 : Issue EDAN02 Addition of the UN/EDIFACT qualifiers related to License Plate included in the UN/EDIFACT D.01A Code list.

- Addition of the following code values:

SG23, GIN segment, DE 7405, codes 'VZ' = Transport unit identification according to ISO/IEC 15459 - Data Identifier 'J'

'WA' = Indivisible transport unit according to ISO/IEC

15459 - Data Identifier '1J'

'WB' = Divisible transport unit according to ISO/IEC 15459
Data Identifier '2J'

- The examples have been updated according the additional qualifiers for license plate.

24 November 1999 :

Addition of UN/ECE Recommendation No 21 qualifiers in SG18 GID C213/7065

BA = Barrel

CN = Container (*)

PE = Pallet (*)

RO = Roll

(*) EDIFICE code, not included in UN/ECE Recommendation No. 21

EDIFICE FUNCTIONAL DEFINITION

Introduction

A message from the party providing forwarding and/or transport services to the party such as has been indicated in the contract, giving notice and details of the arrival of the consignment.

The message also caters for both the 'replace' and 'cancellation' functions by the use of the appropriate codes in the BGM segment.

The message is sent from the freight forwarder to the consignee and other interested parties such as the consignor and the customs broker.

It is recommended that when the seller's/consignor's unique shipment number (used in the DESADV and/or IFTMIN messages) is known to the party sending an IFTMAN message, that number should be referenced in the RFF segment at header level.

This would simplify processes for the buyer/consignee as he will be able to link despatched goods in the DESADV message with arrived goods in the IFTMAN message.

Principles

- Goods items:
 - Several goods items may be in one consignment.
 - Goods items may be transported in containers.
 - A goods item may be transported in one or more containers, and a single container may contain one or more goods items.
 - One goods item may be related to one or more customs tariff codes.
 - Goods items related to one customs tariff code may be carried in one or more containers.

REFERENCES

Refer to the document : Reference list for the EDIFICE message guidelines – Issue 1

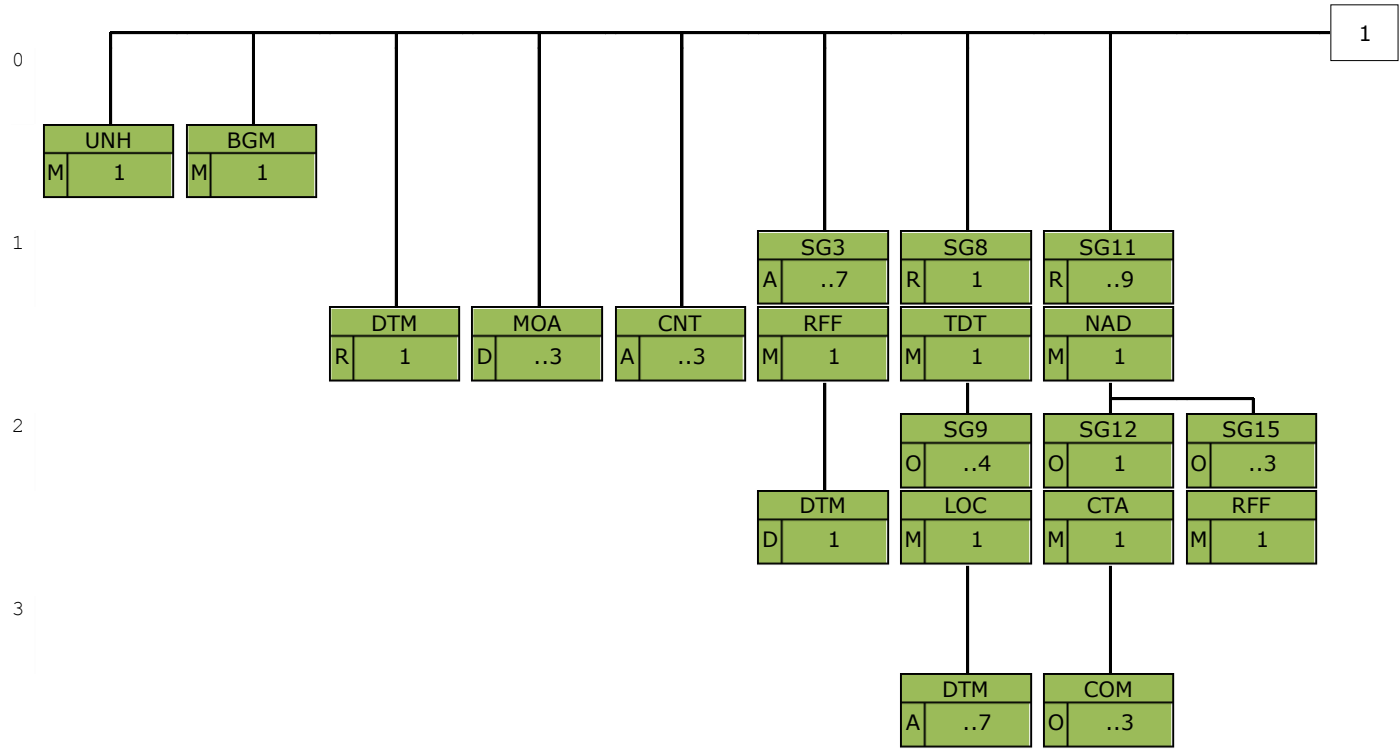
EXPLANATORY NOTES

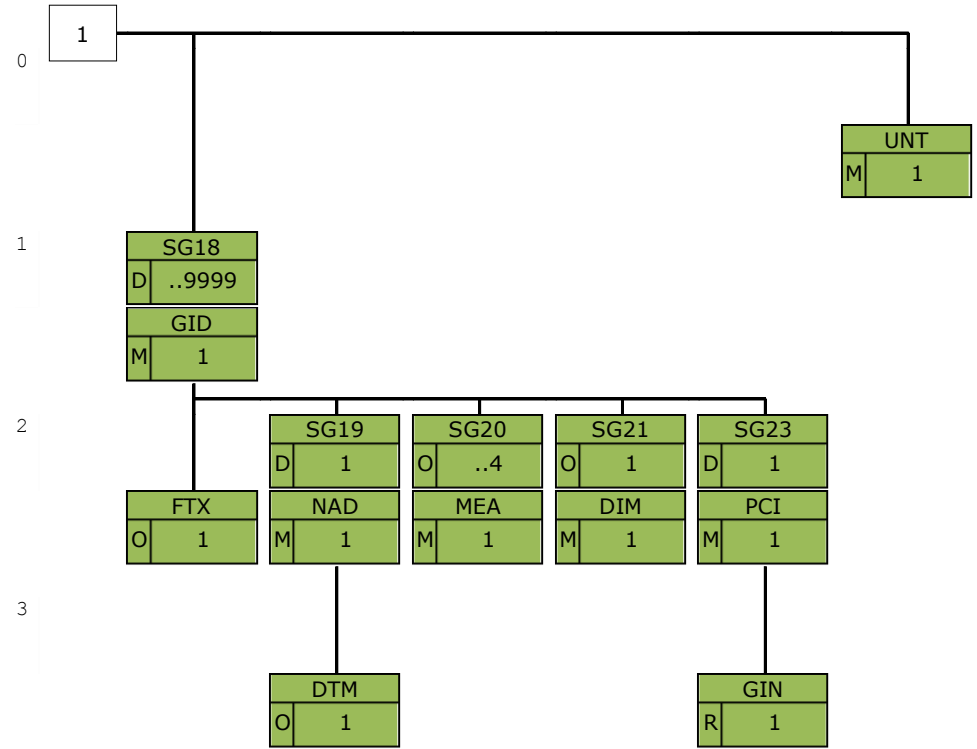
Refer to the document : Explanatory notes for the EDIFICE message guidelines – Issue 1

MESSAGE STRUCTURE CHART

UNH	Message header	M1
BGM	Beginning of message	M1
DTM	Date/time/period	R1
MOA	Monetary amount	D..3
CNT	Control total	A..3
SG3		A..7
RFF	Reference	M1
DTM	Date/time/period	D1
SG8		R1
TDT	Transport information	M1
SG9		O..4
LOC	Place/location identification	M1
DTM	Date/time/period	A..7
SG11		R..9
NAD	Name and address	M1
SG12		O1
CTA	Contact information	M1
COM	Communication contact	O..3
SG15		O..3
RFF	Reference	M1
SG18		D..9999
GID	Goods item details	M1
FTX	Free text	O1
SG19		D1
NAD	Name and address	M1
DTM	Date/time/period	O1
SG20		O..4
MEA	Measurements	M1
SG21		O1
DIM	Dimensions	M1
SG23		D1
PCI	Package identification	M1
GIN	Goods identity number	R1
UNT	Message trailer	M1

BRANCHING DIAGRAM





SEGMENT DESCRIPTION

UNH Message header

Function: A service segment heading, and uniquely identifying the message.
Usage: M 1

BGM Beginning of message

Function: A segment uniquely identifying the message by means of its coded name, number and function.
Usage: M 1

DTM Date/time/period

Function: A segment specifying the date/time of creation of the message.
Usage: R 1

MOA Monetary amount

Function: A segment specifying a monetary amount for the entire consignment.
Usage: D..3

CNT Control total

Function: A segment specifying the weight, volume and quantity of the packages within the consignment.
Usage: A..3

SG3 RFF-DTM

Function: A group of segments referencing documents and their dates/times, relating to the whole message.
Usage: A..7
Notes: The DTM segment must be sent where local law requires the date of a reference document to be sent.

RFF Reference

Function: A segment specifying a document reference number.
Usage: M 1

DTM Date/time/period

Function: A segment specifying the date/time of the reference document.
Usage: D 1

SG8 TDT-SG9

Function: A group of segments specifying transport details.
Usage: R 1
Notes:

TDT Transport information

Function: A segment specifying the stage and mode of transport, the identification of the means of transport, and if necessary the carrier information.
Usage: M 1

SG9 LOC-DTM

Function: A group of segments specifying a location and date/time related to the stage of transport.
Usage: O..4
Notes:

LOC Place/location identification

Function: A segment identifying the location.
Usage: M 1

DTM Date/time/period

Function: A segment specifying the date/time for the specified location.

Usage: A..7

SG11 NAD-SG12-SG15

Function: A group of segments identifying the parties involved and their associated information, relevant to the whole message.

Usage: R..9

Notes: As a minimum the NAD segments identifying the consignee (CN) and the consignor (CZ) must be present. If the goods items specified in SG18 (GID segment) have different delivery addresses, the relevant addresses need to be specified in the NAD segment in SG19 and not here.

NAD Name and address

Function: A segment identifying the function and coded identification, name and address of a party involved.

Usage: M1

SG12 CTA-COM

Function: A group of segments giving contact details of the specific person or department within the identified party involved, to whom communication should be directed.

Usage: O1

Notes:

CTA Contact information

Function: A segment identifying a person or department, and their function.

Usage: M1

COM Communication contact

Function: A segment identifying a communications type and number.

Usage: O..3

SG15 RFF

Function: A group of segments giving references relating to the identified party.

Usage: O..3

Notes:

RFF Reference

Function: A segment specifying a company specific reference.

Usage: M1

SG18 GID-FTX-SG19-SG20-SG21-SG23

Function: A group of segments providing details of goods item i.e. shippable units/packages and its material content.

Usage: D..9999

Notes: SG18 is dependent on the message function stated in the BGM segment.

When an original message or a replace is sent, this group of segments is required, but when a cancellation is sent, it is not required.

SG19 is used when goods items have different pick-up and/or delivery addresses.

The usage of SG23 is dependent on the existence of a package identification (license plate) on the package.

GID Goods item details

Function: A segment describing the number and package type for the goods item.

The segment also carries a sequence number assigned to the goods item within the message.

Usage: M1

FTX Free text

Function: A segment providing a high level description of the material, contained within the shippable unit/package.

Usage: O1

SG19 NAD-DTM

Function: A group of segments identifying the delivery party, and related date/time for the goods item.
Usage: D 1
Notes: If the goods item specified in SG18 (GID segment) have the same delivery address, this address should be specified in the NAD segment in SG11 and not here.

NAD Name and address

Function: A segment identifying the delivery party.
Usage: M 1

DTM Date/time/period

Function: A segment specifying date/time relating to the delivery party.
Usage: O 1

SG20 MEA

Function: A group of segments specifying measurements, other than dimensions, applicable to a goods item.
Usage: O..4
Notes:

MEA Measurements

Function: A segment specifying measurements.
Usage: M 1

SG21 DIM

Function: A group of segments specifying dimensions applicable to a goods item or part of a goods item.
Usage: O 1
Notes:

DIM Dimensions

Function: A segment specifying dimensions.
Usage: M 1

SG23 PCI-GIN

Function: A group of segments specifying packaging identification numbers.
Usage: D 1
Notes: When this information is barcoded, it must be preceded by the appropriate data identifiers.

PCI Package identification

Function: A segment specifying packaging identification numbers for the goods item.
Usage: M 1

GIN Goods identity number

Function: A segment specifying the licence plate number.
Usage: R 1

UNT Message trailer

Function: A service segment ending, and providing information for checking the completeness of a message.
Usage: M 1

SEGMENT DETAILS



UNH Message header

Function: A service segment heading, and uniquely identifying the message.

Usage : M1

Notes : Refer to EDIFICE Utilisation of the UN/EDIFACT Service Segments, Issue EDSS10

Ref.	Rep.	Name		EDIFICE Utilisation
0062	an..14	M MESSAGE REFERENCE NUMBER	M	Transmission message count from 1 IFTMAN = Arrival notice message D = Draft version/UN/EDIFACT Directory 10A = Release 2010 - A UN = UN/CEFACT EDAN10 = International Forward & transport message, arrival notice Issue EDAN10
S009		M MESSAGE IDENTIFIER	M	
0065	an..6	M Message type	M	
0052	an..3	M Message version number	M	
0054	an..3	M Message release number	M	
0051	an..3	M Controlling agency, coded	M	
0057	an..6	C Association assigned code	R	
0110	an..6	C Code list directory version number	N	
0113	an..6	C Message type sub-function identification	N	
0068	an..35	C COMMON ACCESS REFERENCE	N	
S010		C STATUS OF THE TRANSFER	N	
0070	n..2	M Sequence of transfers	N	
0073	a1	C First and last transfer	N	
S016		C MESSAGE SUBSET IDENTIFICATION	N	
0115	an..14	M Message subset identification	N	
0116	an..3	C Message subset version number	N	
0118	an..3	C Message subset release number	N	
0051	an..3	C Controlling agency, coded	N	
S017		C MESSAGE IMPLEMENTATION GUIDELINE IDENTIFICATION	N	
0121	an..14	M Message implementation guideline identification	N	
0122	an..3	C Message implementation guideline version number	N	
0124	an..3	C Message implementation guideline release number	N	
0051	an..3	C Controlling agency, coded	N	
S018		C SCENARIO IDENTIFICATION	N	
0127	an..14	M Scenario identification	N	
0128	an..3	C Scenario version number	N	
0130	an..3	C Scenario release number	N	
0051	an..3	C Controlling agency, coded	N	

BGM Beginning of message

Function: A segment uniquely identifying the message by means of its coded name, number and function.

Usage : M1

Notes : Cancellation:

When DE 1225 contains '1' then only the BGM, DTM, SG8 TDT and SG11 NAD segments need be sent in the message.

The document number used in DE 1004 must be the same as in the original message.

Replace:

When DE 1225 contains '5' it has the effect of cancelling the original message and replacing it with this, so the entire message must be sent. The document number used in DE 1004 must be the same as in the original message.

Ref.	Rep.	Name		EDIFICE Utilisation
C002		C DOCUMENT/MESSAGE NAME	R	
1001	an..3	C Document name code	R	781 = Arrival notice (goods)
1131	an..17	C Code list identification code	N	
3055	an..3	C Code list responsible agency code	N	
1000	an..35	C Document name	N	
C106		C DOCUMENT/MESSAGE IDENTIFICATION	R	
1004	an..70	C Document identifier	R	Message number, assigned by the sender's system.
1056	an..9	C Version identifier	N	
1060	an..6	C Revision identifier	N	
1225	an..3	C MESSAGE FUNCTION CODE	R	1 = Cancellation 5 = Replace 9 = Original
4343	an..3	C RESPONSE TYPE CODE	N	

DTM Date/time/period

Function: A segment specifying the date/time of creation of the message.

Usage : R 1

Notes : All dates and times are local.

Ref.	Rep.	Name		EDIFICE Utilisation
C507		M DATE/TIME/PERIOD	M	
2005	an..3	M Date or time or period function code qualifier	M	137 = Document issue date time
2380	an..35	C Date or time or period text	R	
2379	an..3	C Date or time or period format code	R	102 = CCYYMMDD 102 = CCYYMMDD 203 = CCYYMMDDHHMM 205 = CCYYMMDDHHMMZHHMM <i>Replaces EDIFICE code</i> <i>X03=CCYYMMDDHHMMZZZZZ</i> 303 = CCYYMMDDHHMMZZZ <i>ZZZ = Time zone</i> 304 = CCYYMMDDHHMMSSZZZ <i>ZZZ = Time zone</i>

MOA Monetary amount

Function: A segment specifying a monetary amount for the entire consignment.

Usage : D..3

Notes : The MOA segment must be sent if a service requiring a monetary amount to be specified, has to be rendered.

Ref.	Rep.	Name		EDIFICE Utilisation
C516		M MONETARY AMOUNT	M	
5025	an..3	M Monetary amount type code qualifier	M	22 = Consignment cash on delivery amount 64 = Freight charge 160 = Other costs
5004	n..35	C Monetary amount	R	
6345	an..3	C Currency identification code	R	Use ISO 4217, 3 alpha code
6343	an..3	C Currency type code qualifier	O	1 = Customs valuation currency 4 = Invoicing currency
4405	an..3	C Status description code	O	

CNT Control total

Function: A segment specifying the weight, volume and quantity of the packages within the consignment.
 Usage : A ..3
 Notes :

Ref.	Rep.	Name		EDIFICE Utilisation
C270		M CONTROL	M	
6069	an..3	M Control total type code qualifier	M	7 = Total gross weight 11 = Consignment package quantity 15 = Total consignment, cube <i>Total volume.</i>
6066	n..18	M Control total quantity	M	
6411	an..8	C Measurement unit code	R	CMQ = cubic centimetre FTQ = cubic foot H87 = piece INQ = cubic inch KGM = kilogram LBR = pound MTQ = cubic metre PCE = piece (*) EDIFICE Code 'PCE' is widely adopted by membership and preferred over the EDIFACT code 'H87' (*) EDIFICE code Other codes should be previously agreed between trading partners.

SG3 RFF-DTM

RFF Reference

Function: A segment specifying a document reference number.
 Usage : M1
 Notes :

Ref.	Rep.	Name		EDIFICE Utilisation
C506		M REFERENCE	M	AAM = Waybill number AAS = Transport contract document identifier ABT = Goods declaration document identifier, Customs AWB = Air waybill number BM = Bill of lading number CMR = Road consignment note number CT = Contract number FF = Consignment identifier, freight forwarder assigned HWB = House waybill number MWB = Master air waybill number ON = Order document identifier, buyer assigned SRN = Shipment reference number VN = Order number (vendor)
1153	an..3	M Reference code qualifier	M	
1154	an..70	C Reference identifier	R	
1156	an..6	C Document line identifier	N	
1056	an..9	C Version identifier	N	
1060	an..6	C Revision identifier	N	

SG3 RFF-DTM**DTM Date/time/period**

Function: A segment specifying the date/time of the reference document.

Usage : D1

Notes : All dates and times are local.

Ref.	Rep.	Name		EDIFICE Utilisation
C507		M DATE/TIME/PERIOD	M	
2005	an..3	M Date or time or period function code qualifier	M	171 = Reference date/time
2380	an..35	C Date or time or period text	R	
2379	an..3	C Date or time or period format code	R	102 = CCYMMDD 102 = CCYMMDD 203 = CCYMMDDHHMM 205 = CCYMMDDHHMMZHHMM <i>Replaces EDIFICE code</i> <i>X03=CCYMMDDHHMMZZZZ</i> 303 = CCYMMDDHHMMZZZ <i>ZZZ = Time zone</i> 304 = CCYMMDDHHMMSSZZZ <i>ZZZ = Time zone</i>

SG8 TDT-SG9
TDT Transport information

Function: A segment specifying the stage and mode of transport, the identification of the means of transport, and if necessary the carrier information.

Usage : M1

Notes : DE 8028 may be used to reference a current transport stage as identified in DE 8051, if this information is already known e.g. flight number.

Identification such as vehicle licence plate number may be provided in CO C222 DE 8212.

Ref.	Rep.	Name		EDIFICE Utilisation	
8051	an..3	M TRANSPORT STAGE CODE QUALIFIER	M	20 = Main-carriage transport Used for Flight or Voyage number.	
8028	an..17	C MEANS OF TRANSPORT JOURNEY IDENTIFIER	A		
C220		C MODE OF TRANSPORT	R	1 = Maritime transport 2 = Rail transport 3 = Road transport 4 = Air transport 6 = Multimodal transport	
8067	an..3	C Transport mode name code	R		
8066	an..17	C Transport mode name	N		
C001		C TRANSPORT MEANS	N		
8179	an..8	C Transport means description code	N		
1131	an..17	C Code list identification code	N		
3055	an..3	C Code list responsible agency code	N	Mutually defined code 3 = IATA (International Air Transport Association) 9 = GS1 11 = Lloyd's register of shipping 16 = US, D&B (Dun & Bradstreet Corporation) 91 = Assigned by seller or seller's agent 92 = Assigned by buyer or buyer's agent 166 = US, National Motor Freight Classification Association	
8178	an..17	C Transport means description	N		
C040		C CARRIER	A		
3127	an..17	C Carrier identifier	A		
1131	an..17	C Code list identification code	N		
3055	an..3	C Code list responsible agency code	A		
3126	an..35	C Carrier name	D		Used if no coded name is exchanged.
8101	an..3	C TRANSIT DIRECTION INDICATOR CODE	N		
C401		C EXCESS TRANSPORTATION INFORMATION	N		
8457	an..3	M Excess transportation reason code	N		
8459	an..3	M Excess transportation responsibility code	N		
7130	an..17	C Customer shipment authorisation identifier	N		
C222		C TRANSPORT IDENTIFICATION	A	Vessel name or vehicle license number.	
8213	an..35	C Transport means identification name identifier	N		
1131	an..17	C Code list identification code	N		
3055	an..3	C Code list responsible agency code	N		
8212	an..70	C Transport means identification name	A		
8453	an..3	C Transport means nationality code	O		Use ISO 3166, 2 alpha code
8281	an..3	C TRANSPORT MEANS OWNERSHIP INDICATOR CODE	N		

SG9 LOC-DTM

LOC Place/location identification

Function: A segment identifying the location.

Usage : M1

Notes :

Ref.	Rep.	Name		EDIFICE Utilisation
3227	an..3	M LOCATION FUNCTION CODE QUALIFIER	M	8 = Place of destination 11 = Place of discharge 17 = Border crossing place 24 = Port of entry
C517		C LOCATION IDENTIFICATION	R	
3225	an..35	C Location identifier	R	Use UN/ECE recommendation No 16 UN/LOCODE. If not applicable use appropriate code set in combination with DE 1131 and DE 3055.
1131	an..17	C Code list identification code	D	
3055	an..3	C Code list responsible agency code	D	Examples of codes are: 3 = IATA (International Air Transport Association) 91 = Assigned by seller or seller's agent 92 = Assigned by buyer or buyer's agent
3224	an..256	C Location name	O	
C519		C RELATED LOCATION ONE IDENTIFICATION	N	
3223	an..35	C First related location identifier	N	
1131	an..17	C Code list identification code	N	
3055	an..3	C Code list responsible agency code	N	
3222	an..70	C First related location name	N	
C553		C RELATED LOCATION TWO IDENTIFICATION	N	
3233	an..35	C Second related location identifier	N	
1131	an..17	C Code list identification code	N	
3055	an..3	C Code list responsible agency code	N	
3232	an..70	C Second related location name	N	
5479	an..3	C RELATION CODE	N	

SG9 LOC-DTM**DTM Date/time/period**

Function: A segment specifying the date/time for the specified location.

Usage : A..7

Notes : All dates and times are local.

Ref.	Rep.	Name		EDIFICE Utilisation
C507		M DATE/TIME/PERIOD	M	
2005	an..3	M Date or time or period function code qualifier	M	58 = Clearance date (Customs) 132 = Transport means arrival date time, estimated <i>Date/time when carrier estimates when a means of transport should arrive at port of discharge or place of destination.</i> 143 = Consignment acceptance date time, actual <i>Date on which the goods are taken over by the carrier at the place of acceptance.</i> 151 = Importation date 178 = Transport means arrival date time, actual 204 = Release date (Customs) 219 = Crossborder date/time
2380	an..35	C Date or time or period text	R	
2379	an..3	C Date or time or period format code	R	102 = CCYMMDD 102 = CCYMMDD 203 = CCYMMDDHHMM 205 = CCYMMDDHHMMZHHMM <i>Replaces EDIFICE code</i> <i>X03=CCYMMDDHHMMZZZZ</i> 303 = CCYMMDDHHMMZZZ <i>ZZZ = Time zone</i> 304 = CCYMMDDHHMMSSZZZ <i>ZZZ = Time zone</i>

SG11 NAD-SG12-SG15
NAD Name and address

Function: A segment identifying the function and coded identification, name and address of a party involved.

Usage : M1

Notes : It is advised that the party identification CO C082 be used. When CO C082 cannot be used it is recommended to use the structured name and address CO C080 through DE 3207 rather than the unstructured one CO C058.

Ref.	Rep.	Name		EDIFICE Utilisation
3035	an..3	M PARTY FUNCTION CODE QUALIFIER	M	BY = Buyer CA = Carrier CN = Consignee CZ = Consignor DP = Delivery party <i>This is the ship-to address.</i> FP = Freight/charges payer FW = Freight forwarder NI = Notify party SE = Seller
C082		C PARTY IDENTIFICATION DETAILS	A	
3039	an..35	M Party identifier	M	
1131	an..17	C Code list identification code	N	
3055	an..3	C Code list responsible agency code	R	9 = GS1 16 = US, D&B (Dun & Bradstreet Corporation) 91 = Assigned by seller or seller's agent 92 = Assigned by buyer or buyer's agent
C058		C NAME AND ADDRESS	D	
3124	an..35	M Name and address description	M	
3124	an..35	C Name and address description	O	
3124	an..35	C Name and address description	O	
3124	an..35	C Name and address description	O	
3124	an..35	C Name and address description	O	
C080		C PARTY NAME	D	
3036	an..70	M Party name	M	
3036	an..70	C Party name	O	
3036	an..70	C Party name	O	
3036	an..70	C Party name	O	
3036	an..70	C Party name	O	
3045	an..3	C Party name format code	N	
C059		C STREET	D	
3042	an..35	M Street and number or post office box identifier	M	
3042	an..35	C Street and number or post office box identifier	O	
3042	an..35	C Street and number or post office box identifier	O	
3042	an..35	C Street and number or post office box identifier	O	
3164	an..35	C CITY NAME	D	
C819		C COUNTRY SUBDIVISION DETAILS	N	
3229	an..9	C Country subdivision identifier	D	
1131	an..17	C Code list identification code	N	
3055	an..3	C Code list responsible agency code	N	
3228	an..70	C Country subdivision name	N	
3251	an..17	C POSTAL IDENTIFICATION CODE	D	
3207	an..3	C COUNTRY IDENTIFIER	D	Use ISO 3166, 2 alpha code

SG12 CTA-COM

CTA Contact information

Function: A segment identifying a person or department, and their function.

Usage : M1

Notes :

Ref.	Rep.	Name	EDIFICE Utilisation	
3139	an..3	C CONTACT FUNCTION CODE	R	IC = Information contact If a code is available use DE 3413, otherwise use DE 3412.
C056		C CONTACT DETAILS	R	
3413	an..17	C Contact identifier	D	
3412	an..256	C Contact name	D	

SG12 CTA-COM**COM Communication contact**

Function: A segment identifying a communications type and number.

Usage : 0..3

Notes :

Ref.	Rep.	Name		EDIFICE Utilisation
C076		M COMMUNICATION CONTACT	M	
3148	an..512	M Communication address identifier	M	
3155	an..3	M Communication means type code	M	
				EM = Electronic mail FX = Telefax TE = Telephone

SG15 RFF

RFF Reference

Function: A segment specifying a company specific reference.

Usage : M1

Notes :

Ref.	Rep.	Name		EDIFICE Utilisation
C506		M REFERENCE	M	ADE = Account number AGB = Contract party reference number ERN = Exporter's reference number VA = VAT registration number
1153	an..3	M Reference code qualifier	M	
1154	an..70	C Reference identifier	R	
1156	an..6	C Document line identifier	N	
1056	an..9	C Version identifier	N	
1060	an..6	C Revision identifier	N	

SG18 GID-FTX-SG19-SG20-SG21-SG23

GID Goods item details

Function: A segment describing the number and package type for the goods item.
 The segment also carries a sequence number assigned to the goods item within the message.

Usage : M1

Notes :

Ref.	Rep.	Name	EDIFICE Utilisation	
1496	an..6	C GOODS ITEM NUMBER	R	Number generated by the application of the sender to identify the goods item within the Arrival notice message. It is recommended to start with value 1 for DE 1496 and to increment it by 1 for each new goods item within the message.
C213		C NUMBER AND TYPE OF PACKAGES	R	
7224	n..8	C Package quantity	R	
7065	an..17	C Package type description code	A	BA = Barrel BE = Bundle BG = Bag BX = Box CG = Cage CN = Container, not otherwise specified as transport equipment CR = Crate CS = Case CT = Carton DR = Drum EN = Envelope NE = Unpacked or unpackaged PC = Parcel PK = Package PX = Pallet RL = Reel RO = Roll SW = Shrinkwrapped TU = Tube
1131	an..17	C Code list identification code	D	
3055	an..3	C Code list responsible agency code	D	
7064	an..35	C Type of packages	D	Used if no coded type of packages is exchanged in DE 7065.
7233	an..3	C Packaging related description code	N	
C213		C NUMBER AND TYPE OF PACKAGES	N	
7224	n..8	C Package quantity	N	
7065	an..17	C Package type description code	N	
1131	an..17	C Code list identification code	N	
3055	an..3	C Code list responsible agency code	N	
7064	an..35	C Type of packages	N	
7233	an..3	C Packaging related description code	N	
C213		C NUMBER AND TYPE OF PACKAGES	N	
7224	n..8	C Package quantity	N	
7065	an..17	C Package type description code	N	
1131	an..17	C Code list identification code	N	
3055	an..3	C Code list responsible agency code	N	
7064	an..35	C Type of packages	N	
7233	an..3	C Packaging related description code	N	
C213		C NUMBER AND TYPE OF PACKAGES	N	
7224	n..8	C Package quantity	N	
7065	an..17	C Package type description code	N	
1131	an..17	C Code list identification code	N	
3055	an..3	C Code list responsible agency code	N	
7064	an..35	C Type of packages	N	
7233	an..3	C Packaging related description code	N	
C213		C NUMBER AND TYPE OF PACKAGES	N	
7224	n..8	C Package quantity	N	
7065	an..17	C Package type description code	N	
1131	an..17	C Code list identification code	N	
3055	an..3	C Code list responsible agency code	N	

Ref.	Rep.	Name	EDIFICE Utilisation	
7233	an..3	C Packaging related description code	N	

SG18 GID-FTX-SG19-SG20-SG21-SG23

FTX Free text

Function: A segment providing a high level description of the material, contained within the shippable unit/package.
 Usage : 01
 Notes :

Ref.	Rep.	Name		EDIFICE Utilisation
4451	an..3	M TEXT SUBJECT CODE QUALIFIER	M	AAA = Goods item description
4453	an..3	C FREE TEXT FUNCTION CODE	N	
C107		C TEXT REFERENCE	N	
4441	an..17	M Free text description code	N	
1131	an..17	C Code list identification code	N	
3055	an..3	C Code list responsible agency code	N	
C108		C TEXT LITERAL	R	
4440	an..512	M Free text	M	
4440	an..512	C Free text	O	
4440	an..512	C Free text	O	
4440	an..512	C Free text	O	
4440	an..512	C Free text	O	
3453	an..3	C LANGUAGE NAME CODE	N	
4447	an..3	C FREE TEXT FORMAT CODE	N	

SG19 NAD-DTM
NAD Name and address

Function: A segment identifying the delivery party.

Usage : M1

Notes : It is advised that the party identification CO C082 be used. When CO C082 cannot be used it is recommended to use the structured name and address CO C080 through DE 3207 rather than the unstructured one CO C058.

Ref.	Rep.	Name		EDIFICE Utilisation
3035	an..3	M PARTY FUNCTION CODE QUALIFIER	M	DP = Delivery party <i>Several drop off points for the same consignee. This is the 'ship to' address.</i> 9 = GS1 16 = US, D&B (Dun & Bradstreet Corporation) 91 = Assigned by seller or seller's agent 92 = Assigned by buyer or buyer's agent
C082		C PARTY IDENTIFICATION DETAILS	A	
3039	an..35	M Party identifier	M	
1131	an..17	C Code list identification code	N	
3055	an..3	C Code list responsible agency code	R	
C058		C NAME AND ADDRESS	D	
3124	an..35	M Name and address description	M	
3124	an..35	C Name and address description	O	
3124	an..35	C Name and address description	O	
3124	an..35	C Name and address description	O	
3124	an..35	C Name and address description	O	
C080		C PARTY NAME	D	
3036	an..70	M Party name	M	
3036	an..70	C Party name	O	
3036	an..70	C Party name	O	
3036	an..70	C Party name	O	
3036	an..70	C Party name	O	
3045	an..3	C Party name format code	N	
C059		C STREET	D	
3042	an..35	M Street and number or post office box identifier	M	
3042	an..35	C Street and number or post office box identifier	O	
3042	an..35	C Street and number or post office box identifier	O	
3042	an..35	C Street and number or post office box identifier	O	
3164	an..35	C CITY NAME	D	
C819		C COUNTRY SUBDIVISION DETAILS	N	
3229	an..9	C Country subdivision identifier	D	
1131	an..17	C Code list identification code	N	
3055	an..3	C Code list responsible agency code	N	
3228	an..70	C Country subdivision name	N	
3251	an..17	C POSTAL IDENTIFICATION CODE	D	
3207	an..3	C COUNTRY IDENTIFIER	D	Use ISO 3166, 2 alpha code

SG19 NAD-DTM**DTM Date/time/period**

Function: A segment specifying date/time relating to the delivery party.

Usage : 01

Notes : All dates and times are local.

Ref.	Rep.	Name		EDIFICE Utilisation
C507		M DATE/TIME/PERIOD	M	
2005	an..3	M Date or time or period function code qualifier	M	191 = Delivery date/time, expected
2380	an..35	C Date or time or period text	R	
2379	an..3	C Date or time or period format code	R	102 = CCYMMDD 102 = CCYMMDD 203 = CCYMMDDHHMM 205 = CCYMMDDHHMMZHHMM <i>Replaces EDIFICE code</i> <i>X03=CCYMMDDHHMMZZZZ</i> 303 = CCYMMDDHHMMZZZ <i>ZZZ = Time zone</i> 304 = CCYMMDDHHMMSSZZZ <i>ZZZ = Time zone</i>

SG20 MEA
MEA Measurements

Function: A segment specifying measurements.

Usage : M1

Notes :

Ref.	Rep.	Name		EDIFICE Utilisation
6311	an..3	M MEASUREMENT PURPOSE CODE QUALIFIER	M	CHW = Chargeable weight LMT = Loading meters VOL = Volume WT = Weights AAA = Net weight AAB = Goods item gross weight AAC = Total net weight <i>Net weight</i> AAW = Gross volume ACV = Loading meters CMQ = cubic centimetre FTQ = cubic foot INQ = cubic inch KGM = kilogram LBR = pound MTQ = cubic metre MTR = metre
C502		C MEASUREMENT DETAILS	R	
6313	an..3	C Measured attribute code	R	
6321	an..3	C Measurement significance code	N	
6155	an..17	C Non-discrete measurement name code	N	
6154	an..70	C Non-discrete measurement name	N	
C174		C VALUE/RANGE	R	
6411	an..8	M Measurement unit code	M	
6314	an..18	C Measure	R	
6162	n..18	C Range minimum quantity	N	
6152	n..18	C Range maximum quantity	N	
6432	n..2	C Significant digits quantity	N	
7383	an..3	C SURFACE OR LAYER CODE	N	

SG21 DIM

DIM Dimensions

Function: A segment specifying dimensions.

Usage : M1

Notes :

Ref.	Rep.	Name		EDIFICE Utilisation
6145	an..3	M DIMENSION TYPE CODE QUALIFIER	M	1 = Gross dimensions CMT = centimetre INH = inch MTR = metre
C211		M DIMENSIONS	M	
6411	an..8	M Measurement unit code	M	
6168	n..15	C Length measure	R	
6140	n..15	C Width measure	R	
6008	n..15	C Height measure	R	

SG23 PCI-GIN

PCI Package identification

Function: A segment specifying packaging identification numbers for the goods item.

Usage : M1

Notes : The value entered in this segment is only used to enable access to the following segment within this segment group.

Ref.	Rep.	Name		EDIFICE Utilisation
4233	an..3	C MARKING INSTRUCTIONS CODE	R	24 = Shipper assigned
C210		C MARKS & LABELS	N	
7102	an..35	M Shipping marks description	N	
7102	an..35	C Shipping marks description	N	
7102	an..35	C Shipping marks description	N	
7102	an..35	C Shipping marks description	N	
7102	an..35	C Shipping marks description	N	
7102	an..35	C Shipping marks description	N	
7102	an..35	C Shipping marks description	N	
7102	an..35	C Shipping marks description	N	
7102	an..35	C Shipping marks description	N	
7102	an..35	C Shipping marks description	N	
8169	an..3	C FULL OR EMPTY INDICATOR CODE	N	
C827		C TYPE OF MARKING	N	
7511	an..3	M Marking type code	N	
1131	an..17	C Code list identification code	N	
3055	an..3	C Code list responsible agency code	N	

SG23 PCI-GIN

GIN Goods identity number

Function: A segment specifying the licence plate number.

Usage : R 1

Notes : When using bar coding this information relates to the appropriate data identifiers that indicate License plate.

Ref.	Rep.	Name	EDIFICE Utilisation	
7405	an..3	M OBJECT IDENTIFICATION CODE QUALIFIER	M	ML = Marking/label number VZ = Transport unit identification according to ISO/IEC 15459 WA = Indivisible transport unit according to ISO/IEC 15459 WB = Divisible transport unit according to ISO/IEC 15459
C208		M IDENTITY NUMBER RANGE	M	The first DE 7402 in the composite data element is the start of the consecutively numbered range, the second DE 7402 indicates the end of the range. If there is no range only the first DE 7402 is used. If the identity numbers are not sequential and part of a series (e.g. 1,3,10) then a separate CO C208 and DE 7402 must be used for each identity number.
7402	an..35	M Object identifier	M	
7402	an..35	C Object identifier	D	
C208		C IDENTITY NUMBER RANGE	O	As for first CO C208
7402	an..35	M Object identifier	M	
7402	an..35	C Object identifier	D	
C208		C IDENTITY NUMBER RANGE	O	As for first CO C208
7402	an..35	M Object identifier	M	
7402	an..35	C Object identifier	D	
C208		C IDENTITY NUMBER RANGE	O	As for first CO C208
7402	an..35	M Object identifier	M	
7402	an..35	C Object identifier	D	
C208		C IDENTITY NUMBER RANGE	O	As for first CO C208
7402	an..35	M Object identifier	M	
7402	an..35	C Object identifier	D	

UNT Message trailer

Function: A service segment ending, and providing information for checking the completeness of a message.

Usage : M1

Notes : Refer to EDIFICE Utilisation of the UN/EDIFACT Service Segments, Issue EDSS04.

Ref.	Rep.	Name	EDIFICE Utilisation	
0074	n..10	M NUMBER OF SEGMENTS IN A MESSAGE	M	Count of all segments in the message, UNH and UNT included.
0062	an..14	M MESSAGE REFERENCE NUMBER	M	Must be the same reference number as in DE 0062 of the UNH segment of this message.

EXAMPLES

EXAMPLE 1 - International shipment arriving by air.

This example shows an Arrival Notice for an air shipment. If more than one main-carriage transport leg, only the last one has to be shown.

The delivery point address is indicated for each package.

It is recommended that when the consignor's shipment number is known to the party sending an IFTMAN message, that number should be inserted in the IFTMAN, RFF segment, qualifier SRN.

UNB+UNOW:4+123456789:1:X+987654321:1:X+021209:1909+88+X:AA+IFTMAN++1+X+1'	Message header
UNH+3451+IFTMAN:D:10A:UN:EDAN10'	Message number
BGM+781+123654+9'	Creation date/time
DTM+137:201002110930:203'	Freight charge
MOA+64:2100:USD'	Total gross weight
CNT+7:334:KGM'	Total number of packages
CNT+11:2:PCE'	Total volume
CNT+15:1.152:MTQ'	Shipment reference number
RFF+SRN:927655'	AWB number
RFF+AWB:220-11223344'	Main-carriage transport
TDT+20+LH7766+4++LH::3'	Place of destination
LOC+8+NYC::3'	Customs clearance date
DTM+58:20100212:102'	Actual arrival date/time
DTM+178:201002111940:203'	Seller's code
NAD+SE+SELLER-001::91'	Consignor's code
NAD+CZ+CONSIGNOR-01::91'	Buyer's code
NAD+BY+BUYER-001::92'	Consignee's code
NAD+CN+CONSIGNEE-01::91'	Freight forwarder's code
NAD+FW+FORWARDER-01::91'	One case
GID+1+1:CS'	Goods description
FTX+AAA+++MACHINE PARTS'	Delivery address, coded
NAD+DP+897123::92'	Expected delivery date/time
DTM+191:201002120830:203'	Gross weight in kilos.
MEA+WT+AAB+KGM:167'	Gross volume in cubic metres
MEA+VOL+AAW+MTQ:0.576'	Dimensions in centimetres
DIM+1+CMT:120:80:60'	Trigger for package number (license plate)
PCI+24'	Package number - License plate
GIN+WA+LEABC123882'	One case
GID+2+1:CS'	Goods description
FTX+AAA+++MACHINE PARTS'	Delivery address, coded
NAD+DP+897654::92'	Expected delivery date/time
DTM+191:201002120830:203'	Gross weight in kilos.
MEA+WT+AAB+KGM:167'	Gross volume in cubic metres
MEA+VOL+AAW+MTQ:0.576'	Dimensions in centimetres
DIM+1+CMT:120:80:60'	Trigger for package number (license plate)
PCI+24'	Package number - License plate
GIN+WA+LEABC554677'	
UNT+37+3451'	
UNZ+1+88'	

EXAMPLE 2 - Use of Cancellation option

This is a cancellation message for the shipment in example 1.

UNB+UNOW:4+123456789:1:X+987654321:1:X+021209:1909+88+X:AA+IFTMAN++1+X+1'	
UNH+3452+IFTMAN:D:10A:UN:EDAN10'	Message header
BGM+781+123654+9'	Message number
DTM+137:201002110930:203'	Creation date/time
TDT+20+LH7766+4++LH::3'	Main-carriage transport
NAD+SE+SELLER-001::91'	Seller's code
NAD+CZ+CONSIGNOR-01::91'	Consignor's code
NAD+BY+BUYER-001::92'	Buyer's code
NAD+CN+CONSIGNEE-01::91'	Consignee's code
NAD+FW+FORWARDER-01::91'	Freight forwarder's code
UNT+10+3452'	
UNZ+1+88'	

EXAMPLE 3 - Use of Replace option

This is a replace message for the shipment in example 1.
The customs clearance date and expected delivery dates have been changed.

UNB+UNOW:4+123456789:1:X+987654321:1:X+021209:1909+88+X:AA+IFTMAN++1+X+1'	Message header
UNH+3453+IFTMAN:D:10A:UN:EDAN10'	Message number
BGM+781+123654+5'	Creation date/time
DTM+137:201002110930:203'	Freight charge
MOA+64:2100:USD'	Total gross weight
CNT+7:334:KGM'	Total number of packages
CNT+11:2:PCE'	Total volume
CNT+15:1.152:MTQ'	Shipment reference number
RFF+SRN:927655'	AWB number
RFF+AWB:220-11223344'	Main-carriage transport
TDT+20+LH7766+4++LH::3'	Place of destination
LOC+8+NYC::3'	Customs clearance date
DTM+58:20100213:102'	Actual arrival date/time
DTM+178:201002111940:203'	Seller's code
NAD+SE+SELLER-001::91'	Consignor's code
NAD+CZ+CONSIGNOR-01::91'	Buyer's code
NAD+BY+BUYER-001::92'	Consignee's code
NAD+CN+CONSIGNEE-01::91'	Freight forwarder's code
NAD+FW+FORWARDER-01::91'	One case
GID+1+1:CS'	Goods description
FTX+AAA+++MACHINE PARTS'	Delivery address, coded
NAD+DP+897123::92'	Expected delivery date/time
DTM+191:201002130830:203'	Gross weight in kilos.
MEA+WT+AAB+KGM:167'	Gross volume in cubic metres
MEA+VOL+AAW+MTQ:0.576'	Dimensions in centimetres
DIM+1+CMT:120:80:60'	Trigger for package number (license plate)
PCI+24'	Package number - License plate
GIN+WA+LEABC123882'	One case
GID+2+1:CS'	Goods description
FTX+AAA+++MACHINE PARTS'	Delivery address, coded
NAD+DP+897654::92'	Expected delivery date/time
DTM+191:201002130830:203'	Gross weight in kilos.
MEA+WT+AAB+KGM:167'	Gross volume in cubic metres
MEA+VOL+AAW+MTQ:0.576'	Dimensions in centimetres
DIM+1+CMT:120:80:60'	Trigger for package number (license plate)
PCI+24'	Package number - License plate
GIN+WA+LEABC554677'	
UNT+37+3453'	
UNZ+1+88'	