



## **EDIFICE Message Implementation Guideline**

### **Request for quote**

#### **REQOTE Issue EDRQ04**

**Endorsed 27 November 2002**

**Based on UN/EDIFACT D.97A REQOTE Message**

Copyright ©EDIFICE 2004

All rights reserved. No part of this publication may be reproduced or transmitted in any form or by any means without prior permission of EDIFICE.

Notwithstanding the fact that the utmost care has been observed in the collecting, drawing up and formulating of data, EDIFICE can under no circumstances be held liable for errors, omissions or misinterpretations as a result of the information compiled in the guidelines.

EDIFICE  
The European B2B Forum for the Electronics Industry  
EDIFICE secretariat  
Dora Cresens  
Tiensestraat 2  
B-3320 Hoegaarden  
Belgium  
Tel: +32 16 76 54 40  
Fax: +32 16 76 53 58  
Email: Dora.Cresens@edifice.org

## **TABLE OF CONTENTS**

<u>TITLE</u>	<u>PAGE</u>
COMPARISON TO PREVIOUS ISSUE	3
EDIFICE FUNCTIONAL DEFINITION	5
REFERENCES	7
EXPLANATORY NOTES	7
MESSAGE STRUCTURE CHART	8
BRANCHING DIAGRAM	9
SEGMENT GROUPS/SEGMENTS DESCRIPTION	12
UNH           MESSAGE HEADER	16
BGM           BEGINNING OF MESSAGE	17
DTM           DATE/TIME/PERIOD	18
ALI           ADDITIONAL INFORMATION	19
FTX           FREE TEXT	20
SG1 - RFF     REFERENCE	21
SG1 - DTM     DATE/TIME/PERIOD	22
SG4 - CUX     CURRENCIES	23
SG6 - TOD     TERMS OF DELIVERY	24
SG6 - LOC     PLACE/LOCATION IDENTIFICATION	25
SG11 - NAD    NAME AND ADDRESS	26
SG27 - LIN     LINE ITEM	27
SG27 - PIA    ADDITIONAL PRODUCT ID	28
SG27 - IMD    ITEM DESCRIPTION	29
SG27 - QTY    QUANTITY	30
SG27 - PCD    PERCENTAGE DETAILS	31
SG27 - FTX    FREE TEXT	32
SG31 - PRI    PRICE DETAILS	33
SG31 - RNG    RANGE DETAILS	34
SG31 - DTM    DATE/TIME/PERIOD	35
SG32 - RFF    REFERENCE	36
SG39 - PAC    PACKAGE	37
SG39 - QTY    QUANTITY	39
SG39 - NAD    NAME AND ADDRESS	40
SG54 - SCC    SCHEDULING CONDITIONS	41
SG55 - QTY    QUANTITY	42
SG55 - DTM    DATE/TIME/PERIOD	43
UNS           SECTION CONTROL	44
UNT           MESSAGE TRAILER	45
EXAMPLES	46 - 48

## **COMPARISON TO PREVIOUS ISSUE**

12 May 2004 : EDIFIX 5.0 Technical Upgrade

- The 'KMT' qualifier in SEG QTY and PRI DE 6411 is now defined as (\*) EDIFICE code. UN/ECE Recommendation 20 specifies 'KTM' as qualifier for 'kilometre'.

21 May 2003: EDIFIX 4.2 Technical upgrade; review and correction of examples

Issue EDRQ04 of 13 November 2002 is based on UN/EDIFACT D97.A / Code List D01.A

- Addition of the following code value:

SG27, LIN segment, CO C212, DE 7143 code 'SRV' EAN.UCC Global Trade Item Number

SG27, PIA segment, CO C212, DE 7143 code 'SRV' EAN.UCC Global Trade Item Number

Issue EDRQ03 of 29 May 2002 – addition of recommended set of DTM qualifiers

Issue EDRQ03 includes the following changes compared to issue EDRQ02 of 24 September 1997:

- Replacement of the following code:
  - UNH, DE 0057 Association assigned code EDRQ03
- Addition of the following segments:
  - SG31, RNG
  - SG31, DTM

Issue EDRQ02 includes the changes that have been made to the issue 1 of the Request for Quote document endorsed by the EDIFICE Plenary on 22 June 1993. The changes are as follows:

- Recast from the 92.1 version of the UN/EDIFACT directory to the D.97A version,

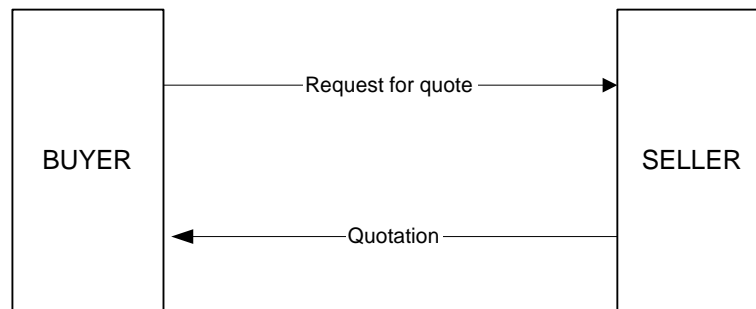
- Addition of the following code values:
  - all NAD segments, DE 3055, code '16' DUNS (Dun & Bradstreet)
  - SG27, LIN segment, DE 7143, codes 'DI' Distributor's part number
    - 'MF' Manufacturer's (producer's) article number and
    - 'UP' UPC (Universal product code)
  - SG27, LIN segment, DE 3055, codes '89' Assigned by distributor
    - '90' Assigned by manufacturer and
    - '113' US, UCC (Uniform Code Council)
  - SG27, PIA segment, DE 7143, codes 'CL' Color number
    - 'DI' Distributor's part number
    - 'DW' Drawing
    - 'MF' Manufacturer's (producer's) article number and
    - 'UP' UPC (Universal product code)
  - SG27, PIA segment, DE 3055, codes '89' Assigned by distributor
    - '90' Assigned by manufacturer and
    - '113' US, UCC (Uniform Code Council)
  - SG27, IMD segment, DE 7077, code 'C' Code (from industry code list)
  - SG27, IMD segment, DE 7081, code '26' Ship to line
  - SG39, PAC segment, DE 7065, codes 'BLK90' Standard Bulk
    - 'RAL90' Standard Rail (semiconductor)
    - 'REL90' Standard Reel
    - 'TRY90' Standard Tray
  - SG39, PAC segment, CO C202, DE 3055, code '116' US, ANSI ASC X12,
- Addition of the following segments:
  - SG1, DTM
  - SG6, LOC
  - SG39, QTY,
- Replacement of the following codes:
  - header DTM segment, CO C507, DE 2005, codes '341' to '194' Start date/time
    - '342' to '206' End date/time
    - '343' to '317' Reply date
  - SG4, CUX segment, CO C504, DE 6347, codes '6' to '16' (same value)
    - '7' to '17' (same value)
  - SG4, CUX segment, CO C504, DE 6343, code '18' to '3' Home currency
  - SG27, LIN segment, DE 1229, code '13' to '33' (same value)
  - SG27, PIA segment, DE 4347, code '5' to '1' Additional identification
  - SG27, PIA segment, CO C212, DE 7143, code 'RN' to 'AA' Product version number
  - SG27, QTY segment, CO C186, DE 6063, codes '144' to '444' (same value)
    - '145' to '445' (same value)
    - '146' to '446' (same value)

SG31, PRI segment, CO C509, DE 5125, codes 'RES' and 'BUY' to 'AAA' Calculation net  
SG55, QTY segment, CO C186, DE 6063, code '144' to '444' (same value)  
'145' to '445' (same value),

- Usage changed for the following segment groups/segments/data elements:
  - all FTX segments, CO C107, X to A
  - CO C108, R to D
  - CO C108, 2<sup>nd</sup> to 5<sup>th</sup> DE 4440, D to O
  - SG4, D..2 to D..4
  - SG4, CUX segment, 2<sup>nd</sup> CO C504, O to N
  - SG6, TOD segment, CO C100, DE 1131, X to D
  - SG6, TOD segment, CO C100, DE 3055, X to D
  - SG27, IMD segment, DE 7081, A to O
  - SG27, IMD segment, CO C273, DE 7009, X to A
  - SG27, IMD segment, CO C273, 1<sup>st</sup> DE 7008, R to D
  - SG27, IMD segment, CO C273, 2<sup>nd</sup> DE 7008, D to O
  - SG39, O1 to D1
  - SG39, PAC segment, CO C202, DE 3055, X to D,
- Where UN/ECE Recommendations are referenced the most commonly used codes have been identified,
- Alignment of segments and composite data elements to ensure conformance (data harmonization) across all EDIFICE Implementation Guidelines,
- Update of the REFERENCES and EXPLANATORY NOTES sections to comply with the EDIFICE Standards for Documentation of Message Implementation Guidelines issue 3,
- Update of examples,
- Documentation adjustments resulting from the use of GEFEG's EdiFix Message Implementation Guidelines documentation tool,
- Correction of typographical errors.

## **EDIFICE FUNCTIONAL DEFINITION**

EDIFICE provides two messages for the quotation process; the Request for Quote (REQOTE) and the Quotation (QUOTES). Together they are used to satisfy the business needs of the quotation function. The information flow is shown in the diagram below:



This EDIFICE guideline for the utilisation of the UN/EDIFACT REQOTE message caters for the issuing of a request for a quotation of price and/or delivery for goods and/or services under a business or commercial agreement. It is assumed that this agreement defines all standard, basic trading terms and conditions as agreed between the two parties. As such, a Request for Quote constitutes a business function under this agreement, to which it will refer for basic terms and conditions.

The following principles apply:

- There is a one to one relationship between REQOTE and QUOTES.
- A QUOTES must apply to only one REQOTE.
- Once sent, a REQOTE may not be amended.
- Every Request for Quote message should have a unique document number and this must be returned by the Seller in the Quotation message, unless the entire Request for Quote message is being cancelled or the function code in the BGM segment indicates that the Request For Quotation is an 'End Customer Booking Confirmation'.
- A REQOTE may be sent again, by which the Seller should treat it as a request for better terms. In this case, the REQOTE must specify a new, unique document number (BGM), but refer to the Seller's quotation number (RFF).
- Item Numbers are used to identify the product or service for which a request for quote is being made. Where this is not sufficient, the item must be identified by providing a clear description.
- The individual item lines for which a quotation is requested should be identified unambiguously in the REQOTE message by sending the Buyers Request for Quote line number in a Reference segment (RFF) associated with each item line. Any other means of identification, or a decision that such identification is not required, must be agreed by both trading partners concerned and documented in the Trading Partner Agreement.
- Those Segment Groups, Segments and Data Elements which are labelled with 'O' (Optional) should be used only if the information they contain cannot be incorporated in the business or commercial agreement. The use of 'O' (optional) must be agreed between trading partners.
- Nine variations of the Request for Quote message have been identified. The REQOTE message will be used to satisfy all nine variations. These variations are:
  1. Request for quotation of Price only (no delivery)
  2. Request for quotation of Delivery only (no price)
  3. Request for quotation of Price and Delivery
  4. Request for Contract quotation (price and delivery)  
This message is designed to facilitate the exchange of Item, Quantity, Pricing and Delivery information (at a minimum) between a buyer and a supplier. The Request for Contract Quotation will be issued by the buyer to a number of suppliers as part of a periodic contract negotiation.

The scope is that within an agreed timeframe (delivery schedule), the buyer will purchase stated quantities in order to retain the quoted price and can apply between:

- a manufacturer and an OEM customer,
- a manufacturer and a distributor,
- a manufacturer, distributor and end customer,
- a distributor and an end customer.

5. Request for Contract quotation (price only)  
[refer to Request for Contract Quotation (price and delivery) and omit all reference to delivery].
6. Request for Ship & Debit Quotation (price and delivery)  
This message is designed to facilitate the exchange of item, quantity, pricing and delivery information (at a minimum), between a Manufacturer and a Manufacturer's Agent (commonly referred to as a Distributor or Stockist) to apply for a price and delivery quotation at which they may purchase/receive items.

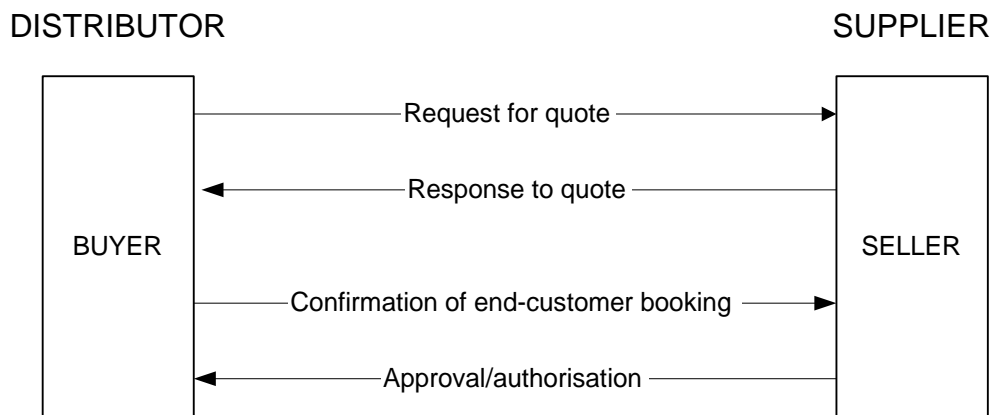
The Agent will frequently hold stock, purchased from the Manufacturer at a fixed price with assumptions regarding expected margins (profit on the resale). In given circumstances/criteria the fixed Price Catalogue "Distributor Cost" (issued by the Manufacturer) does not return expected margins when the Agent resells the item to the third party customer.

In these situations the Agent will apply to the Manufacturer for a special buy price and specific delivery schedules.

This business practise (Ship & Debit) is common in the Electronics Industry with the Quote process an essential and critical part of the Ship & Debit cycle.

7. Request for Ship & Debit Quotation (price only)  
[refer to Ship & Debit Quotation (price and delivery) and omit all reference to delivery].

There will be business situations within the Ship & Debit environment when the Distributor is unable to inform the Manufacturer (at time of the Request for Quotation) whether he has "won" the business. Where this happens four distinct processes (versus the standard two) will be undertaken using the REQOTE and QUOTES messages. The following demonstrates the data flow:



## **REFERENCES**

Refer to the document : Reference list for the EDIFICE message guidelines – Issue 1

## **EXPLANATORY NOTES**

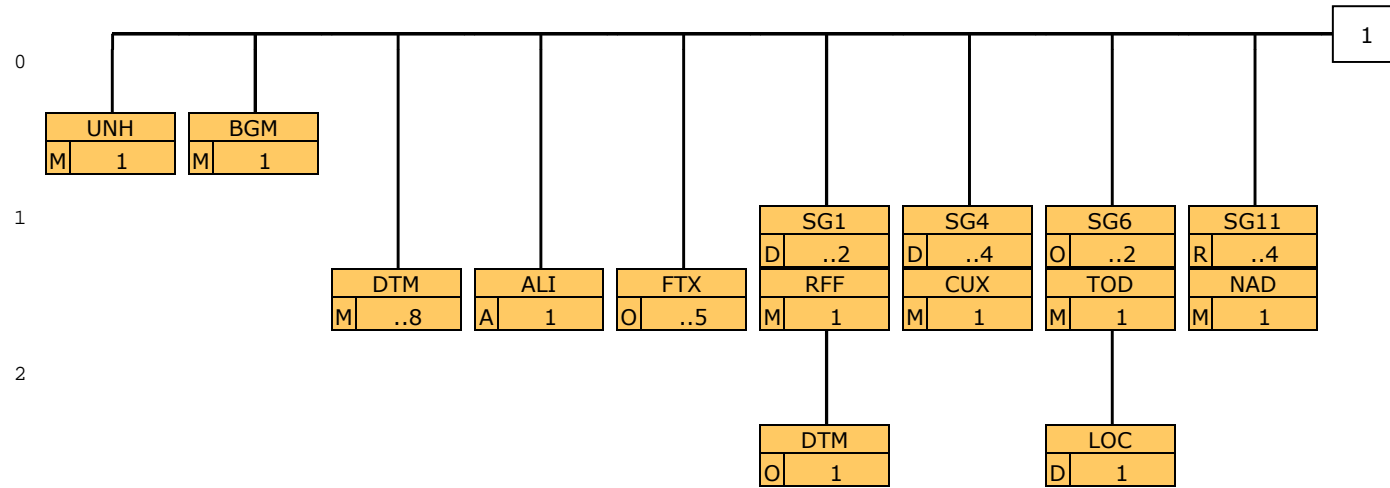
Refer to the document : Explanatory notes for the EDIFICE message guidelines – Issue 1

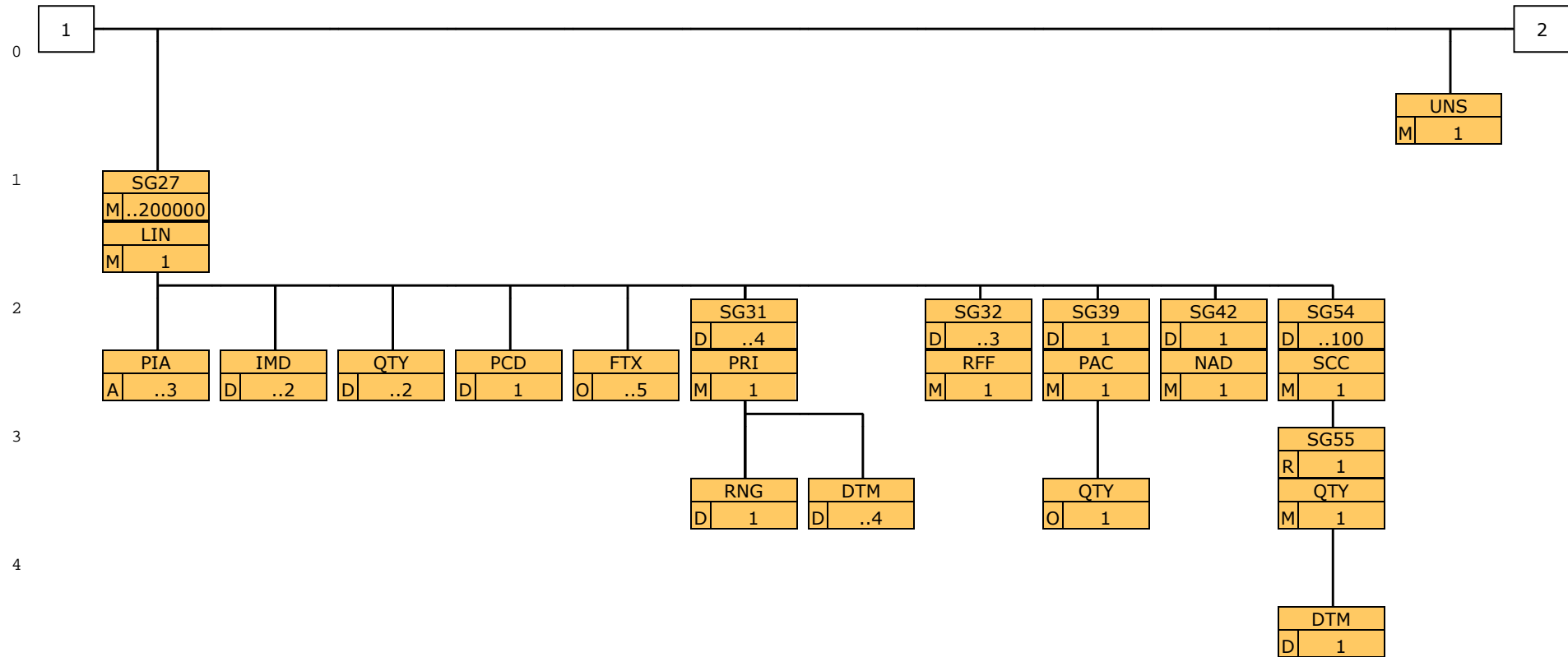
## MESSAGE STRUCTURE CHART

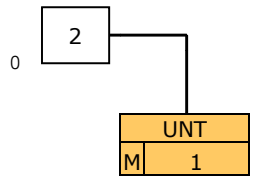
UNH	MESSAGE HEADER	M 1
BGM	BEGINNING OF MESSAGE	M 1
DTM	DATE/TIME/PERIOD	M..8
ALI	ADDITIONAL INFORMATION	A 1
FTX	FREE TEXT	O..5
SG1		D..2
RFF	REFERENCE	M 1
DTM	DATE/TIME/PERIOD	O 1
SG4		D..4
CUX	CURRENCIES	M 1
SG6		O..2
TOD	TERMS OF DELIVERY OR TRANSPORT	M 1
LOC	PLACE/LOCATION IDENTIFICATION	D 1
SG11		R..4
NAD	NAME AND ADDRESS	M 1
SG27		M..200000
LIN	LINE ITEM	M 1
PIA	ADDITIONAL PRODUCT ID	A..3
IMD	ITEM DESCRIPTION	D..2
QTY	QUANTITY	D..2
PCD	PERCENTAGE DETAILS	D 1
FTX	FREE TEXT	O..5
SG31		D..4
PRI	PRICE DETAILS	M 1
RNG	RANGE DETAILS	D 1
DTM	DATE/TIME/PERIOD	D..4
SG32		D..3
RFF	REFERENCE	M 1
SG39		D 1
PAC	PACKAGE	M 1
QTY	QUANTITY	O 1
SG42		D 1
NAD	NAME AND ADDRESS	M 1
SG54		D..100
SCC	SCHEDULING CONDITIONS	M 1
SG55		R 1
QTY	QUANTITY	M 1
DTM	DATE/TIME/PERIOD	D 1
UNS	SECTION CONTROL	M 1
UNT	MESSAGE TRAILER	M 1



**BRANCHING DIAGRAM**







## **SEGMENT GROUPS/SEGMENTS DESCRIPTION**

### **UNH MESSAGE HEADER**

---

Function: A service segment heading, and uniquely identifying the message.  
Usage: M1

### **BGM BEGINNING OF MESSAGE**

---

Function: A segment uniquely identifying the message by means of its coded name, number and function.  
Usage: M1

### **DTM DATE/TIME/PERIOD**

---

Function: A segment specifying the date of creation of the message and, other dates relevant to the whole message.  
Usage: M..8

### **ALI ADDITIONAL INFORMATION**

---

Function: A segment indicating that special conditions due to the origin, fiscal or commercial factors are applicable.  
Usage: A 1

### **FTX FREE TEXT**

---

Function: A segment providing free form or coded text information, applicable to the whole message.  
Usage: O..5

### **SG1 RFF-DTM**

---

Function: A group of segments referencing documents and their dates, relating to the whole message.  
Usage: D..2  
Notes: This segment group should be used where a contract number and/or a previously assigned supplier quote number needs to be sent.

### **RFF REFERENCE**

---

Function: A segment specifying a document reference number.  
Usage: M1

### **DTM DATE/TIME/PERIOD**

---

Function: A segment specifying the date of the reference document.  
Usage: O 1

### **SG4 CUX**

---

Function: A group of segments specifying the currencies for all prices, valid for the whole message.  
Usage: D..4  
Notes: There must be at least one segment group for each price type stated (buyer/competitor buy and/or resale prices), if prices are sent in the message.

### **CUX CURRENCIES**

---

Function: A segment specifying a buyer's or competitor's currency.  
Usage: M1

### **SG6 TOD-LOC**

---

Function: A group of segments indicating the terms of delivery to be quoted in response to this request.  
Usage: O..2  
Notes: To be used only if it is necessary to be specific about terms of delivery and the relevant location points. The LOC segment is only used if the terms of delivery ('F' & 'C') require a named location/place.

### **TOD TERMS OF DELIVERY OR TRANSPORT**

---

Function: A segment specifying the terms of delivery to be used.

Usage: M1

---

**LOC PLACE/LOCATION IDENTIFICATION**

---

Function: A segment identifying a location or place required for the terms of delivery.

Usage: D 1

---

**SG11 NAD**

---

Function: A group of segments identifying the parties involved and their associated information, relevant to the whole message.

Usage: R ..4

Notes: EDIFICE requires that this segment group be used at least once to identify the sender of the document (buyer).

This segment group may also be used to identify the recipient of the request for quotation (seller).

For ship & debit and for back-to-back quotation requests, EDIFICE requires the actual purchaser's customer to be identified using this segment group.

---

**NAD NAME AND ADDRESS**

---

Function: A segment identifying the function and coded identification, name and address of a party involved.

Usage: M1

---

**SG27 LIN-PIA-IMD-QTY-PCD-FTX-SG31-SG32-SG39-SG42-SG54**

---

Function: A group of segments providing details of the individual line items i.e. products for which a quotation is being requested.

Usage: M..200000

Notes: On a re-issue request for quote, only the LIN and RFF segments need be sent if

DE 1229 = '4' (No action).

On a cancellation of a request for quote, only one 'dummy' LIN segment with DE 1229 = '2' need be sent.

The IMD segment is used to provide an additional description of the primary reference. It may also be used for items that can not be identified by a code or article number.

The QTY segment is required on the first issue of a request for quote line (BGM Message Function Code = '9'). There will be instances within a price & delivery request for quotation where the quantity associated with the price will be different to the quantity associated with the delivery and vice versa.

The PCD segment may be used to provide the required profit percentage and is only expected to be relevant in a supplier/distributor relationship.

SG31 is only required when a price or price and delivery quote is requested. The segment group should be repeated for each price type which pertains to the quote request.

Up to four occurrences are envisaged:

- buyer's requested buy price
- buyer's target resale price
- competitor's quoted buy price
- competitor's quoted resale price

SG32 may be used to indicate the buyer's request for quote line number. It may also be used to specify a 'design win' registration number and/or a business status indicator.

SG39 may be used where alternative packaging methods are agreed between trading partners.

SG42 should be sent if the buyer agrees to indicate to the provider of a quotation the source of a competitor price which has been provided in a PRI segment associated with this line item.

SG54 is not required if DE 1001 in the BGM segment = '301', '304', '306' or '308'.

---

**LIN LINE ITEM**

---

Function: A segment identifying a line item by its item number, and agreed to be the primary reference number between the buyer and seller.

The segment also carries a sequence number assigned to the line item within the message, and the action taken.

Usage: M1

---

**PIA ADDITIONAL PRODUCT ID**

---

Function: A segment providing additional identification for the line item.

Usage: A..3

---

**IMD ITEM DESCRIPTION**

---

Function: A segment specifying ship to stock or ship to line quality and/or an additional description in clear or coded form, for the line item.  
Usage: D..2

---

**QTY QUANTITY**

---

Function: A segment specifying the total quantity for the line item for which a quotation is being requested  
Usage: D..2

---

**PCD PERCENTAGE DETAILS**

---

Function: A segment specifying the required profit percentage for the line item.  
Usage: D 1

---

**FTX FREE TEXT**

---

Function: A segment providing free form or coded text information for the line item.  
Usage: O..5

---

**SG31 PRI-RNG-DTM**

---

Function: A group of segments specifying pricing and range information for the line item.  
Usage: D..4  
Notes:

---

**PRI PRICE DETAILS**

---

Function: A segment specifying the line item price and the qualifying information.  
Usage: M1

---

**RNG RANGE DETAILS**

---

Function: A segment specifying the line item range  
Usage: D 1

---

**DTM DATE/TIME/PERIOD**

---

Function: A segment specifying the date applying to the range.  
Usage: D..4

---

**SG32 RFF**

---

Function: A group of segments specifying references for the line item.  
Usage: D..3  
Notes: The individual line items for which a quotation is requested should be identified unambiguously in the REQOTE message by sending the buyer's request for quote line number in a RFF segment associated with each item line. Any other means of identification, or a decision that such identification is not required, must be agreed by both trading partners concerned and documented in the Trading Partner Agreement.

---

**RFF REFERENCE**

---

Function: A segment specifying a line item reference number.  
Usage: M1

---

**SG39 PAC-QTY**

---

Function: A group of segments specifying product packaging information for the line item.  
Usage: D 1  
Notes: This segment group may be used where alternative packaging methods are agreed between the trading partners.

---

**PAC PACKAGE**

---

Function: A segment specifying the product package type.  
Usage: M1

---

**QTY QUANTITY**

---

Function: A segment specifying the number of products contained in the package type.  
Usage: O 1

---

**SG42 NAD**

---

Function: A group of segments identifying the parties involved and their associated information, relevant to the line item.  
Usage: D 1  
Notes:

---

**NAD NAME AND ADDRESS**

---

Function: A segment identifying the function and coded identification, name and address of the competitor involved.  
Usage: M 1

---

**SG54 SCC-SG55**

---

Function: A group of segments specifying firm delivery dates and the quantities scheduled for the line item, associated with a request for delivery quotation or a request for price and delivery quotation.  
Usage: D..100  
Notes: If a quotation is being requested for a delivery, the buyer has the option of providing a required delivery date or of requesting the supplier to offer the best delivery terms available. If the latter is the case then an associated DTM segment would not be required within SG55.

---

**SCC SCHEDULING CONDITIONS**

---

Function: A segment specifying a firm delivery.  
Usage: M 1

---

**SG55 QTY-DTM**

---

Function: A group of segments specifying the delivery dates and the quantities scheduled.  
Usage: R 1  
Notes:

---

**QTY QUANTITY**

---

Function: A segment specifying a quantity.  
Usage: M 1

---

**DTM DATE/TIME/PERIOD**

---

Function: A segment specifying the corresponding date of the quantity.  
Usage: D 1

---

**UNS SECTION CONTROL**

---

Function: A service segment separating the detail and summary section.  
Usage: M 1

---

**UNT MESSAGE TRAILER**

---

Function: A service segment ending, and providing information for checking the completeness of a message.  
Usage: M 1

## SEGMENT DETAILS



### UNH MESSAGE HEADER

Function: A service segment heading, and uniquely identifying the message.

Usage : M1

Notes : Refer to EDIFICE utilisation of the UN/EDIFACT service segments, Issue EDSS04

Ref.	Rep.	Name	EDIFICE Utilisation
0062	an..14	M MESSAGE REFERENCE NUMBER	M
S009		M MESSAGE IDENTIFIER	M
0065	an..6	M Message type identifier	M REQOTE = Request for quote message
0052	an..3	M Message type version number	M D = Draft version/UN/EDIFACT Directory
0054	an..3	M Message type release number	M 97A = Release 1997 - A
0051	an..2	M Controlling agency	M UN = UN/CEFACT
0057	an..6	C Association assigned code	R EDRQ04 = Request for quote Issue EDRQ04
0068	an..35	C COMMON ACCESS REFERENCE	N
S010		C STATUS OF THE TRANSFER	N
0070	n..2	M Sequence message transfer number	N
0073	a1	C First/last sequence message transfer indication	N



**BGM BEGINNING OF MESSAGE**

Function: A segment uniquely identifying the message by means of its coded name, number and function.

Usage : M1

Notes :

Ref.	Rep.	Name		EDIFICE Utilisation
C002		C DOCUMENT/MESSAGE NAME	R	
1001	an..3	C Document/message name, coded	R	301 = Request for price quote (*) 302 = Request for delivery quote (*) 303 = Request for price and delivery quote (*) 304 = Request for contract price quote (*) 305 = Request for contract price and delivery quote (*) 306 = Request for back to back price quote (*) 307 = Request for back to back price and delivery quote (*)  308 = Request for ship & debit price quote (*) 309 = Request for ship & debit price and delivery quote (*)  (* ) EDIFICE code
1131	an..3	C Code list qualifier	N	
3055	an..3	C Code list responsible agency, coded	N	
1000	an..35	C Document/message name	N	
C106		C DOCUMENT/MESSAGE IDENTIFICATION	R	
1004	an..35	C Document/message number	R	Buyer's Request for quote number which must be unique unless DE 1225 is equal to '6'; then the combined contents of DE 1004 and DE 1225 must be unique.
1056	an..9	C Version	N	
1060	an..6	C Revision number	N	
1225	an..3	C MESSAGE FUNCTION, CODED	R	1 = Cancellation Cancel quote request; if used, only one 'dummy' LIN segment need be sent 6 = Confirmation Used by ship & debit upon confirmation of end customer booking 9 = Original Original quote request 18 = Reissue Re-issue quote request; a request for better terms
4343	an..3	C RESPONSE TYPE, CODED	N	

**DTM      DATE/TIME/PERIOD**

Function: A segment specifying the date of creation of the message and, other dates relevant to the whole message.

Usage : M..8

Notes : At least one DTM segment must be present, specifying the document creation date.

Ref.	Rep.	Name			EDIFICE Utilisation
C507		M DATE/TIME/PERIOD		M	
2005	an..3	M Date/time/period qualifier		M	36 = Expiry date Validity end date of quote requested by the buyer 37 = Ship not before date/time Supplier to buyer or buyer to end customer in cases of ship & debit 38 = Ship not later than date/time Supplier to buyer or buyer to end customer in cases of ship & debit 137 = Document/message date/time Date when the document is created 157 = Validity start date Validity start date of quote requested by the buyer 194 = Start date/time Start date of buyer placing order on supplier 206 = End date/time End date of buyer placing order on supplier Buyer placing order on supplier 317 = Reply date (*) The date by which the recipient must respond (*) EDIFICE code
2380	an..35	C Date/time/period		R	
2379	an..3	C Date/time/period format qualifier		R	102 = CCYMMDD 203 = CCYMMDDHHMM 303 = CCYMMDDHHMMZZZ ZZZ = Time zone 304 = CCYMMDDHHMMSSZZZ ZZZ = Time zone X03 = CCYMMDDHHMMZZZZ (*) ZZZZ = Time zone X04 = CCYMMDDHHMMSSZZZZ (*) ZZZZ = Time zone (*) EDIFICE code

**ALI ADDITIONAL INFORMATION**

Function: A segment indicating that special conditions due to the origin, fiscal or commercial factors are applicable.  
 Usage : A 1  
 Notes : EDIFICE advises that the commercial reason for the quote request be specified in this segment. Where commercial requirements dictate there may be instances, where more than one DE 4183 are sent depending on the value of the data held in the first occurrence of DE 4183.

Ref.	Rep.	Name		EDIFICE Utilisation
3239	an..3	C COUNTRY OF ORIGIN, CODED	N	
9213	an..3	C TYPE OF DUTY REGIME, CODED	N	
4183	an..3	C SPECIAL CONDITIONS, CODED	R	100 = Costings (*) 101 = Tender (*) 102 = Mixed (*) 103 = Design win (*) 104 = Order to place (*) 105 = To be advised (*) 106 = Turns (*) 107 = Promotion (*) 108 = No design win registered (*) 109 = Backlog protection (*) 110 = Kit (*) 111 = Demonstration equipment (*) 112 = Volume (*) 113 = Estimated annual quantity (*) (*) EDIFICE code
4183	an..3	C SPECIAL CONDITIONS, CODED	D	As for first DE 4183
4183	an..3	C SPECIAL CONDITIONS, CODED	D	As for first DE 4183
4183	an..3	C SPECIAL CONDITIONS, CODED	D	As for first DE 4183
4183	an..3	C SPECIAL CONDITIONS, CODED	D	As for first DE 4183

**FTX FREE TEXT**

Function: A segment providing free form or coded text information, applicable to the whole message.

Usage : O..5

Notes : EDIFICE recommends not to use FTX segments.  
Where possible, use CO C107 rather than CO C108.

Ref.	Rep.	Name		EDIFICE Utilisation
4451	an..3	M TEXT SUBJECT QUALIFIER	M	GEN = Entire transaction set 1 = Text for subsequent use The occurrence of this text does not affect message processing. 3 = Text for immediate use Text must be read before processing the message.
4453	an..3	C TEXT FUNCTION, CODED	A	
C107		C TEXT REFERENCE	A	
4441	an..17	M Free text identification	M	
1131	an..3	C Code list qualifier	N	
3055	an..3	C Code list responsible agency, coded	N	
C108		C TEXT LITERAL	D	
4440	an..70	M Free text	M	
4440	an..70	C Free text	O	
4440	an..70	C Free text	O	
4440	an..70	C Free text	O	
4440	an..70	C Free text	O	
3453	an..3	C LANGUAGE, CODED	N	

**SG1 RFF-DTM****RFF REFERENCE**

Function: A segment specifying a document reference number.

Usage : M1

Notes :

Ref.	Rep.	Name		EDIFICE Utilisation
C506		M REFERENCE	M	
1153	an..3	M Reference qualifier	M	CT = Contract number PR = Price quote number Supplier's quote number
1154	an..35	C Reference number	R	
1156	an..6	C Line number	N	
4000	an..35	C Reference version number	N	

**SG1 RFF-DTM**

**DTM DATE/TIME/PERIOD**

Function: A segment specifying the date of the reference document.

Usage : 01

Notes :

Ref.	Rep.	Name	EDIFICE Utilisation
C507		M DATE/TIME/PERIOD	M
2005	an..3	M Date/time/period qualifier	M 171 = Reference date/time
2380	an..35	C Date/time/period	R
2379	an..3	C Date/time/period format qualifier	R
			102 = CCYYMMDD
			203 = CCYYMMDDHHMM
			303 = CCYYMMDDHHMMZZZ
			ZZZ = Time zone
			304 = CCYYMMDDHHMMSSZZZ
			ZZZ = Time zone
			X03 = CCYYMMDDHHMMZZZZZ (*)
			ZZZZZ = Time zone
			X04 = CCYYMMDDHHMMSSZZZZZ (*)
			ZZZZZ = Time zone
			(*) EDIFICE code

**SG4 CUX**
**CUX CURRENCIES**

Function: A segment specifying a buyer's or competitor's currency.

Usage : M1

Notes : This segment may be used to specify up to two price type currencies. i.e. buyer/competitor buy and/or resale prices.

Ref.	Rep.	Name		EDIFICE Utilisation
C504		C CURRENCY DETAILS	R	
6347	an..3	M Currency details qualifier	M	16 = Buy price (*) 17 = Resale price (*) (* ) EDIFICE code
6345	an..3	C Currency, coded	R	Use ISO 4217, 3 alpha code
6343	an..3	C Currency qualifier	R	3 = Home currency Buyer's currency 19 = Competitor's currency (*) (* ) EDIFICE code
6348	n..4	C Currency rate base	N	
C504		C CURRENCY DETAILS	N	
6347	an..3	M Currency details qualifier	N	
6345	an..3	C Currency, coded	N	
6343	an..3	C Currency qualifier	N	
6348	n..4	C Currency rate base	N	
5402	n..12	C RATE OF EXCHANGE	N	
6341	an..3	C CURRENCY MARKET EXCHANGE, CODED	N	

SG6 TOD-LOC

**TOD TERMS OF DELIVERY OR TRANSPORT**

Function: A segment specifying the terms of delivery to be used.

Usage : M1

Notes :

Ref.	Rep.	Name		EDIFICE Utilisation
4055	an..3	C TERMS OF DELIVERY OR TRANSPORT FUNCTION, CODED	R	1 = Price condition 3 = Price and despatch condition 6 = Delivery condition  Use UN/ECE Recommendation no.5, Incoterms 1990 (see next table). Incoterms code list: Group E - Departure EXW = Ex works Group F - Main carriage unpaid FAS = Free alongside ship FCA = Free carrier FOB = Free on Board Group C - Main carriage paid CFR = Cost and freight CIF = Cost, insurance and freight CIP = Carriage and insurance paid to CPT = Carriage paid to Group D - Arrival DAF = Delivered at frontier DDP = Delivered duty paid DDU = Delivered duty unpaid DEQ = Delivered ex quay DES = Delivered ex ship  If not applicable, use code from another appropriate code set in DE 4053 in combination with DE 1131/3055.
4215	an..3	C TRANSPORT CHARGES METHOD OF PAYMENT, CODED	N	
C100		C TERMS OF DELIVERY OR TRANSPORT	R	
4053	an..3	C Terms of delivery or transport, coded	R	
1131	an..3	C Code list qualifier	D	
3055	an..3	C Code list responsible agency, coded	D	
4052	an..70	C Terms of delivery or transport	N	
4052	an..70	C Terms of delivery or transport	N	



**SG6 TOD-LOC**

**LOC PLACE/LOCATION IDENTIFICATION**

Function: A segment identifying a location or place required for the terms of delivery.

Usage : D 1

Notes :

Ref.	Rep.	Name		EDIFICE Utilisation
3227	an..3	M PLACE/LOCATION QUALIFIER	M	1 = Place of terms of delivery  Use UN/ECE Recommendation no.16, UNLOCODE. If not applicable, use codes from another appropriate code set in combination with DE 1131/3055.
C517		C LOCATION IDENTIFICATION	R	
3225	an..25	C Place/location identification	R	
1131	an..3	C Code list qualifier	D	3 = IATA (International Air Transport Association) 91 = Assigned by seller or seller's agent 92 = Assigned by buyer or buyer's agent
3055	an..3	C Code list responsible agency, coded	D	
3224	an..70	C Place/location	N	
C519		C RELATED LOCATION ONE IDENTIFICATION	N	
3223	an..25	C Related place/location one identification	N	
1131	an..3	C Code list qualifier	N	
3055	an..3	C Code list responsible agency, coded	N	
3222	an..70	C Related place/location one	N	
C553		C RELATED LOCATION TWO IDENTIFICATION	N	
3233	an..25	C Related place/location two identification	N	
1131	an..3	C Code list qualifier	N	
3055	an..3	C Code list responsible agency, coded	N	
3232	an..70	C Related place/location two	N	
5479	an..3	C RELATION, CODED	N	

**SG11 NAD**

**NAD NAME AND ADDRESS**

Function: A segment identifying the function and coded identification, name and address of a party involved.

Usage : M1

Notes : It is advised that the party identification CO C082 be used. When CO C082 cannot be used it is recommended to use the structured name and address CO C080 through DE 3207 rather than the unstructured one CO C058.

Ref.	Rep.	Name		EDIFICE Utilisation
3035	an..3	M PARTY QUALIFIER	M	BY = Buyer It is to be assumed that delivery will be made to the buyer's address, unless a delivery party is specified. DP = Delivery party PC = Actual purchaser's customer End customer SE = Seller
C082		C PARTY IDENTIFICATION DETAILS	A	
3039	an..35	M Party id. identification	M	Code identifying the party
1131	an..3	C Code list qualifier	N	
3055	an..3	C Code list responsible agency, coded	R	9 = EAN (International Article Numbering association) 16 = DUNS (Dun & Bradstreet) 91 = Assigned by seller or seller's agent 92 = Assigned by buyer or buyer's agent
C058		C NAME AND ADDRESS	D	
3124	an..35	M Name and address line	M	
3124	an..35	C Name and address line	O	
3124	an..35	C Name and address line	O	
3124	an..35	C Name and address line	O	
3124	an..35	C Name and address line	O	
C080		C PARTY NAME	D	
3036	an..35	M Party name	M	
3036	an..35	C Party name	O	
3036	an..35	C Party name	O	
3036	an..35	C Party name	O	
3036	an..35	C Party name	O	
3045	an..3	C Party name format, coded	N	
C059		C STREET	D	
3042	an..35	M Street and number/p.o. box	M	
3042	an..35	C Street and number/p.o. box	O	
3042	an..35	C Street and number/p.o. box	O	
3042	an..35	C Street and number/p.o. box	O	
3164	an..35	C CITY NAME	D	
3229	an..9	C COUNTRY SUB-ENTITY IDENTIFICATION	D	
3251	an..9	C POSTCODE IDENTIFICATION	D	
3207	an..3	C COUNTRY, CODED	D	Use ISO 3166, 2 alpha code

**SG27 LIN-PIA-IMD-QTY-PCD-FTX-SG31-SG32-SG39-SG42-SG54**

**LIN LINE ITEM**

Function: A segment identifying a line item by its item number, and agreed to be the primary reference number between the buyer and seller.  
The segment also carries a sequence number assigned to the line item within the message, and the action taken.

Usage : M1

Notes :

Ref.	Rep.	Name	EDIFICE Utilisation
1082	an..6	C LINE ITEM NUMBER	R It is required to assign a number to the line items within a message. The number is assigned by the sender of the message. The first line item within a message will be numbered 1 and further line items will be incremented by 1 for each new line.
1229	an..3	C ACTION REQUEST/NOTIFICATION, CODED	R 1 = Added To be used for an original quote request 2 = Deleted To be used when cancelling a request for quote 4 = No action May be used on a re-issued request for quote. It may also be used for ship & debit confirmation. In this case, it should be supported by a business status indicator in an associated RFF segment. 33 = Reissue (*) To be used on a re-issued request for quote (* ) EDIFICE code
C212		C ITEM NUMBER IDENTIFICATION	A
7140	an..35	C Item number	R Primary reference
7143	an..3	C Item number type, coded	R BP = Buyer's part number DI = Distributor's part number (*) EN = International Article Numbering Association (EAN) MF = Manufacturer's (producer's) article number SRV = EAN.UCC Global Trade Item Number UP = UPC (Universal product code) VP = Vendor's (seller's) part number (* ) EDIFICE code
1131	an..3	C Code list qualifier	N
3055	an..3	C Code list responsible agency, coded	R 9 = EAN (International Numbering association) 89 = Assigned by distributor 90 = Assigned by manufacturer 91 = Assigned by seller or seller's agent 92 = Assigned by buyer or buyer's agent 113 = US, UCC (Uniform Code Council)
C829		C SUB-LINE INFORMATION	N
5495	an..3	C Sub-line indicator, coded	N
1082	an..6	C Line item number	N
1222	n..2	C CONFIGURATION LEVEL	N
7083	an..3	C CONFIGURATION, CODED	N

**SG27 LIN-PIA-IMD-QTY-PCD-FTX-SG31-SG32-SG39-SG42-SG54****PIA ADDITIONAL PRODUCT ID**

Function: A segment providing additional identification for the line item.

Usage : A..3

Notes : The 5 internal repetitions of CO C212 may be used, but EDIFICE recommends to only use the first occurrence.

Ref.	Rep.	Name		EDIFICE Utilisation
4347	an..3	M PRODUCT ID. FUNCTION QUALIFIER	M	1 = Additional identification  AA = Product version number Number assigned by manufacturer or seller to identify the release of a product BP = Buyer's part number CL = Color number DI = Distributor's part number (*) DR = Drawing revision number DW = Drawing EC = Engineering change level EN = International Article Numbering Association (EAN) MF = Manufacturer's (producer's) article number SRV = EAN.UCC Global Trade Item Number UP = UPC (Universal product code) VP = Vendor's (seller's) part number (* ) EDIFICE code
C212		M ITEM NUMBER IDENTIFICATION	M	
7140	an..35	C Item number	R	
7143	an..3	C Item number type, coded	R	
1131	an..3	C Code list qualifier	N	
3055	an..3	C Code list responsible agency, coded	R	
C212		C ITEM NUMBER IDENTIFICATION	O	
7140	an..35	C Item number	R	
7143	an..3	C Item number type, coded	R	
1131	an..3	C Code list qualifier	N	
3055	an..3	C Code list responsible agency, coded	R	
C212		C ITEM NUMBER IDENTIFICATION	O	As for first CO C212
7140	an..35	C Item number	R	
7143	an..3	C Item number type, coded	R	
1131	an..3	C Code list qualifier	N	
3055	an..3	C Code list responsible agency, coded	R	
C212		C ITEM NUMBER IDENTIFICATION	O	As for first CO C212
7140	an..35	C Item number	R	
7143	an..3	C Item number type, coded	R	
1131	an..3	C Code list qualifier	N	
3055	an..3	C Code list responsible agency, coded	R	
C212		C ITEM NUMBER IDENTIFICATION	O	As for first CO C212
7140	an..35	C Item number	R	
7143	an..3	C Item number type, coded	R	
1131	an..3	C Code list qualifier	N	
3055	an..3	C Code list responsible agency, coded	R	

**SG27 LIN-PIA-IMD-QTY-PCD-FTX-SG31-SG32-SG39-SG42-SG54**
**IMD ITEM DESCRIPTION**

Function: A segment specifying ship to stock or ship to line quality and/or an additional description in clear or coded form, for the line item.

Usage : D..2

Notes :

Ref.	Rep.	Name		EDIFICE Utilisation
7077	an..3	C ITEM DESCRIPTION TYPE, CODED	D	C = Code (from industry code list) F = Free-form 3 = Ship to stock 26 = Ship to line Use DE 7009 for a coded description. If no code is available use DE 7008 instead.
7081	an..3	C ITEM CHARACTERISTIC, CODED	O	
C273		C ITEM DESCRIPTION	D	
7009	an..17	C Item description identification	A	
1131	an..3	C Code list qualifier	N	
3055	an..3	C Code list responsible agency, coded	N	
7008	an..35	C Item description	D	
7008	an..35	C Item description	O	
3453	an..3	C Language, coded	N	
7383	an..3	C SURFACE/LAYER INDICATOR, CODED	N	

**SG27 LIN-PIA-IMD-QTY-PCD-FTX-SG31-SG32-SG39-SG42-SG54**

**QTY QUANTITY**

Function: A segment specifying the total quantity for the line item for which a quotation is being requested

Usage : D..2

Notes : The measure unit qualifier used in DE 6411 applies to all the underlying QTY segments.

Ref.	Rep.	Name		EDIFICE Utilisation
C186		M QUANTITY DETAILS	M	
6063	an..3	M Quantity qualifier	M	444 = Requested quantity (*) 445 = Requested delivery quantity (*) To be used only if delivery quantity is different to price quantity 446 = Requested price quantity (*) To be used only if price quantity is different to delivery quantity (*) EDIFICE code
6060	n..15	M Quantity	M	Total line quantity
6411	an..3	C Measure unit qualifier	R	Use the following codes from UN/ECE Recommendation no.20, Codes for Units of Measurement: CLT = centilitre CMT = centimetre GRM = gram KGM = kilogram KMT = kilometre (*) LTR = litre MGM = milligram MMT = millimetre MTK = square metre MTQ = cubic metre MTR = metre PCE = piece (*) (*) EDIFICE code, not included in UN/ECE Recommendation No. 20 Other codes should be previously agreed between trading partners.

**SG27 LIN-PIA-IMD-QTY-PCD-FTX-SG31-SG32-SG39-SG42-SG54****PCD PERCENTAGE DETAILS**

Function: A segment specifying the required profit percentage for the line item.

Usage : D 1

Notes :

Ref.	Rep.	Name	EDIFICE Utilisation	
C501		M PERCENTAGE DETAILS	M	
5245	an..3	M Percentage qualifier	M	5 = Entry percentage
5482	n..10	C Percentage	R	Percentage value
5249	an..3	C Percentage basis, coded	N	
1131	an..3	C Code list qualifier	N	
3055	an..3	C Code list responsible agency, coded	N	

**SG27 LIN-PIA-IMD-QTY-PCD-FTX-SG31-SG32-SG39-SG42-SG54****FTX FREE TEXT**

Function: A segment providing free form or coded text information for the line item.

Usage : 0..5

Notes : EDIFICE recommends not to use FTX segments.  
Where possible, use CO C107 rather than CO C108.

Ref.	Rep.	Name		EDIFICE Utilisation
4451	an..3	M TEXT SUBJECT QUALIFIER	M	LIN = Line item 1 = Text for subsequent use The occurrence of this text does not affect message processing 3 = Text for immediate use Text must be read before processing the message
4453	an..3	C TEXT FUNCTION, CODED	A	
C107		C TEXT REFERENCE	A	
4441	an..17	M Free text identification	M	
1131	an..3	C Code list qualifier	N	
3055	an..3	C Code list responsible agency, coded	N	
C108		C TEXT LITERAL	D	
4440	an..70	M Free text	M	
4440	an..70	C Free text	O	
4440	an..70	C Free text	O	
4440	an..70	C Free text	O	
4440	an..70	C Free text	O	
3453	an..3	C LANGUAGE, CODED	N	



**SG31 PRI-RNG-DTM**

**PRI PRICE DETAILS**

Function: A segment specifying the line item price and the qualifying information.

Usage : M1

Notes :

Ref.	Rep.	Name		EDIFICE Utilisation
C509		C PRICE INFORMATION	R	
5125	an..3	M Price qualifier	M	AAA = Calculation net
5118	n..15	C Price	R	
5375	an..3	C Price type, coded	R	BY = Buyer (*) CO = Competitor (*) (* ) EDIFICE code
5387	an..3	C Price type qualifier	N	
5284	n..9	C Unit price basis	R	
6411	an..3	C Measure unit qualifier	R	Use the following codes from UN/ECE Recommendation no.20, Codes for Units of Measurement: CLT = centilitre CMT = centimetre GRM = gram KGM = kilogram KMT = kilometre (*) LTR = litre MGM = milligram MMT = millimetre MTK = square metre MTQ = cubic metre MTR = metre PCE = piece (*) (* ) EDIFICE code, not included in UN/ECE Recommendation No. 20 Other codes should be previously agreed between trading partners.
5213	an..3	C SUB-LINE PRICE CHANGE, CODED	N	

**SG31 PRI-RNG-DTM**
**RNG RANGE DETAILS**

Function: A segment specifying the line item range

Usage : D1

Notes : This segment is only used when the request for quote is related to a contract, i.e. BGM , DE 1001 = '304 Request for contract price quote' or '305 Request for contract price & delivery quote'

Ref.	Rep.	Name		EDIFICE Utilisation
6167	an..3	M RANGE TYPE QUALIFIER	M	4 = Quantity range
C280		C RANGE	R	
6411	an..3	M Measure unit qualifier	M	PCE = Piece (*) (* ) EDIFICE code, not included in UN/ECE Recommendation No. 20
6162	n..18	C Range minimum	R	Range minimum
6152	n..18	C Range maximum	R	Range maximum

**SG31 PRI-RNG-DTM**

**DTM DATE/TIME/PERIOD**

Function: A segment specifying the date applying to the range.

Usage : D..4

Notes : This segment is only used when the request for quote is related to a contract, i.e. BGM , DE 1001 = '304 Request for contract price quote' or '305 Request for contract price & delivery quote'

Ref.	Rep.	Name		EDIFICE Utilisation
C507		M DATE/TIME/PERIOD	M	
2005	an..3	M Date/time/period qualifier	M	37 = Ship not before date/time 38 = Ship not later than date/time 194 = Start date/time 206 = End date/time
2380	an..35	C Date/time/period	R	Date
2379	an..3	C Date/time/period format qualifier	R	102 = CCYYMMDD 203 = CCYYMMDDHHMM 303 = CCYYMMDDHHMMZZZ ZZZ = Time zone 304 = CCYYMMDDHHMMSSZZZ ZZZ = Time zone X03 = CCYYMMDDHHMMZZZZZ (*) ZZZZZ = Time zone X04 = CCYYMMDDHHMMSSZZZZZ (*) ZZZZZ = Time zone (*) EDIFICE code

**SG32 RFF****RFF REFERENCE**

Function: A segment specifying a line item reference number.

Usage : M1

Notes : If DE 1229 = '4' (No action) in the LIN segment and DE 1225 in the BGM segment = '6' (Confirmation), then an RFF segment (SG32) containing a business status indicator must be sent.

Ref.	Rep.	Name		EDIFICE Utilisation
C506		M REFERENCE	M	
1153	an..3	M Reference qualifier	M	BSS = Business status indicator (*) DW = Design win (*) LI = Line item reference number
1154	an..35	C Reference number	D	(*) EDIFICE code Must be used if DE 1153 = 'DW' or 'BSS'; if DE 1153 = 'BSS' then the contents of DE 1154 are to be agreed between the trading partners, e.g. 'WON' = Business won, 'LOST' = Business lost.
1156	an..6	C Line number	D	Must contain the buyer's item line number if DE 1153 = 'LI'
4000	an..35	C Reference version number	N	

**SG39 PAC-QTY**

**PAC PACKAGE**

Function: A segment specifying the product package type.

Usage : M1

Notes :

Ref.	Rep.	Name		EDIFICE Utilisation
7224	n..8	C NUMBER OF PACKAGES	N	
C531		C PACKAGING DETAILS	N	
7075	an..3	C Packaging level, coded	N	
7233	an..3	C Packaging related information, coded	N	
7073	an..3	C Packaging terms and conditions, coded	N	
C202		C PACKAGE TYPE	R	
7065	an..17	C Type of packages identification	R	<p>The following codes are taken from EIDX documentation:</p> <ul style="list-style-type: none"> <li>BLK90 = Standard Bulk</li> <li>RAL90 = Standard Rail (semiconductor)</li> <li>REL90 = Standard Reel</li> <li>TRY90 = Standard Tray</li> </ul> <p>The following codes are taken from UN/ECE Recommendation no.21, (TDED 5.8):</p> <ul style="list-style-type: none"> <li>BA = Barrel</li> <li>BB = Bobbin</li> <li>BE = Bundle</li> <li>BG = Bag</li> <li>BQ = Bottle, protected cylindrical</li> <li>BV = Bottle, protected bulbous</li> <li>BX = Box</li> <li>CG = Cage</li> <li>CN = Container (*)</li> <li>CR = Crate</li> <li>CS = Case</li> <li>CT = Carton</li> <li>CX = Can, cylindrical</li> <li>DR = Drum</li> <li>EN = Envelope</li> <li>NE = Unpacked or unpackaged</li> <li>PC = Parcel</li> <li>PE = Pallet (*)</li> <li>PK = Package</li> <li>PU = Tray</li> <li>RL = Reel</li> <li>RO = Roll</li> <li>SW = Shrinkwrapped</li> <li>TN = Tin</li> <li>TU = Tube</li> </ul> <p>(*) EDIFICE code, not included in UN/ECE Recommendation No. 21 Other codes should be previously agreed between trading partners.</p>
1131	an..3	C Code list qualifier	N	
3055	an..3	C Code list responsible agency, coded	D	<p>Only used if the code is taken from EIDX documentation.</p> <p>116 = US, ANSI ASC X12</p>
7064	an..35	C Type of packages	N	
C402		C PACKAGE TYPE IDENTIFICATION	N	
7077	an..3	M Item description type, coded	N	
7064	an..35	M Type of packages	N	
7143	an..3	C Item number type, coded	N	
7064	an..35	C Type of packages	N	
7143	an..3	C Item number type, coded	N	
C532		C RETURNABLE PACKAGE DETAILS	N	
8395	an..3	C Returnable package freight payment responsibility, coded	N	

Ref.	Rep.	Name	EDIFICE Utilisation	
8393	an..3	C Returnable package load contents, coded	N	

**SG39 PAC-QTY****QTY QUANTITY**

Function: A segment specifying the number of products contained in the package type.

Usage : 01

Notes :

Ref.	Rep.	Name		EDIFICE Utilisation
C186		M QUANTITY DETAILS	M	
6063	an..3	M Quantity qualifier	M	52 = Quantity per pack
6060	n..15	M Quantity	M	
6411	an..3	C Measure unit qualifier	N	

**SG42 NAD**

**NAD NAME AND ADDRESS**

Function: A segment identifying the function and coded identification, name and address of the competitor involved.

Usage : M1

Notes : It is advised that the party identification CO C082 be used. When CO C082 cannot be used it is recommended to use the structured name and address CO C080 through DE 3207 rather than the unstructured one CO C058.

Ref.	Rep.	Name	EDIFICE Utilisation	
3035	an..3	M PARTY QUALIFIER	M	CMP = Competitor (*) (*) EDIFICE code
C082		C PARTY IDENTIFICATION DETAILS	A	
3039	an..35	M Party id. identification	M	Code identifying the party
1131	an..3	C Code list qualifier	N	
3055	an..3	C Code list responsible agency, coded	R	9 = EAN (International Article Numbering association) 16 = DUNS (Dun & Bradstreet) 91 = Assigned by seller or seller's agent 92 = Assigned by buyer or buyer's agent
C058		C NAME AND ADDRESS	D	
3124	an..35	M Name and address line	M	
3124	an..35	C Name and address line	O	
3124	an..35	C Name and address line	O	
3124	an..35	C Name and address line	O	
3124	an..35	C Name and address line	O	
C080		C PARTY NAME	D	
3036	an..35	M Party name	M	
3036	an..35	C Party name	O	
3036	an..35	C Party name	O	
3036	an..35	C Party name	O	
3036	an..35	C Party name	O	
3036	an..35	C Party name	O	
3045	an..3	C Party name format, coded	N	
C059		C STREET	D	
3042	an..35	M Street and number/p.o. box	M	
3042	an..35	C Street and number/p.o. box	O	
3042	an..35	C Street and number/p.o. box	O	
3042	an..35	C Street and number/p.o. box	O	
3042	an..35	C Street and number/p.o. box	O	
3164	an..35	C CITY NAME	D	
3229	an..9	C COUNTRY SUB-ENTITY IDENTIFICATION	D	
3251	an..9	C POSTCODE IDENTIFICATION	D	
3207	an..3	C COUNTRY, CODED	D	Use ISO 3166, 2 alpha code



**SG54 SCC-SG55**

**SCC SCHEDULING CONDITIONS**

Function: A segment specifying a firm delivery.

Usage : M1

Notes :

Ref.	Rep.	Name		EDIFICE Utilisation
4017	an..3	M DELIVERY PLAN STATUS INDICATOR, CODED	M	1 = Firm
4493	an..3	C DELIVERY REQUIREMENTS, CODED	N	
C329		C PATTERN DESCRIPTION	N	
2013	an..3	C Frequency, coded	N	
2015	an..3	C Despatch pattern, coded	N	
2017	an..3	C Despatch pattern timing, coded	N	

**SG55 QTY-DTM****QTY QUANTITY**

Function: A segment specifying a quantity.

Usage : M1

Notes : This segment is used to specify the breakdown of the total quotation request line quantity into its constituent delivery quantities (i.e. multiple drops).

Ref.	Rep.	Name		EDIFICE Utilisation
C186		M QUANTITY DETAILS	M	
6063	an..3	M Quantity qualifier	M	444 = Requested quantity (*) Should only be used if DE 6063 in QTY segment (SG27) = '444' 445 = Requested delivery quantity (*) (* ) EDIFICE code
6060	n..15	M Quantity	M	
6411	an..3	C Measure unit qualifier	N	

**SG55 QTY-DTM**

**DTM DATE/TIME/PERIOD**

Function: A segment specifying the corresponding date of the quantity.

Usage : D1

Notes : If a quotation is being requested for a delivery, the buyer has the option of either supplying the required delivery date, or of requesting the supplier to offer the best delivery terms available. If the latter is the case then the associated DTM segment need not be sent.

Ref.	Rep.	Name		EDIFICE Utilisation
C507		M DATE/TIME/PERIOD	M	
2005	an..3	M Date/time/period qualifier	M	2 = Delivery date/time, requested
2380	an..35	C Date/time/period	R	
2379	an..3	C Date/time/period format qualifier	R	
				102 = CCYYMMDD
				203 = CCYYMMDDHHMM
				303 = CCYYMMDDHHMMZZZ
				ZZZ = Time zone
				304 = CCYYMMDDHHMMSSZZZ
				ZZZ = Time zone
				X03 = CCYYMMDDHHMMZZZZZ (*)
				ZZZZZ = Time zone
				X04 = CCYYMMDDHHMMSSZZZZZ (*)
				ZZZZZ = Time zone
				(*) EDIFICE code

**UNS SECTION CONTROL**

Function: A service segment separating the detail and summary section.  
 Usage : M1  
 Notes :

Ref.	Rep.	Name	EDIFICE Utilisation	
0081	a1	M SECTION IDENTIFICATION	M	S = Detail/summary section separation

**UNT MESSAGE TRAILER**

Function: A service segment ending, and providing information for checking the completeness of a message.  
Usage : M1  
Notes : Refer to EDIFICE utilisation of the UN/EDIFACT service segments, Issue EDSS04.

Ref.	Rep.	Name	EDIFICE Utilisation	
0074	n..6	M NUMBER OF SEGMENTS IN A MESSAGE	M	Count of all segments in the message, UNH and UNT included.
0062	an..14	M MESSAGE REFERENCE NUMBER	M	Must be the same reference number as in DE 0062 of the UNH segment of this message.

## **EXAMPLES**

### **EXAMPLE 1**    REQUEST FOR PRICE QUOTATION

UNB+UNOC:3+234567891:1:X+198765432:1:X+971201:1924+66+X:AA+REQOTE++1+X+1'  
UNH+1+REQOTE:D:97A:UN:EDRQ04'  
BGM+301+RFQ1+9'  
DTM+137:19970401:102'  
DTM+36:19970601:102'  
ALI+++107'  
CUX+16:GBP:3'  
NAD+BY+ELECTRONICS LTD::92'  
LIN+1+1+WIDGET:BP::92'  
PIA+1+XYZ:DR::92'  
IMD++3'  
QTY+444:1000:PCE'  
PRI+AAA:25.10:BY::1:PCE'  
RFF+LI::001'  
UNS+S'  
UNT+15+1'  
UNZ+1+66'

### **EXAMPLE 2**    REQUEST FOR PRICE QUOTATION (RE-ISSUE)

UNB+UNOC:3+234567891:1:X+198765432:1:X+971201:1924+66+X:AA+REQOTE++1+X+1'  
UNH+1+REQOTE:D:97A:UN:EDRQ04'  
BGM+301+RFQ1A+18'  
DTM+137:19970403:102'  
DTM+36:19970601:102'  
ALI+++107'  
RFF+PR:Q001'  
CUX+16:GBP:3'  
NAD+BY+ELECTRONICS LTD::92'  
LIN+1+33+WIDGET:BP::92'  
PIA+1+XYZ:DR::92'  
IMD++3'  
QTY+444:1000:PCE'  
PRI+AAA:25.10:BY::1:PCE'  
PRI+AAA:25.20:CO::1:PCE'  
RFF+LI::001'  
NAD+CMP+BETTER BUY::92'  
UNS+S'  
UNT+18+1'  
UNZ+1+66'

EXAMPLE 3 REQUEST FOR PRICE & DELIVERY QUOTATION

UNB+UNOC:3+234567891:1:X+198765432:1:X+971201:1924+66+X:AA+REQOTE+++1+X+1'  
UNH+1+REQOTE:D:97A:UN:EDRQ04'  
BGM+303+RFQ3+9'  
DTM+137:19970401:102'  
DTM+157:19970406:102'  
DTM+36:19970806:102'  
ALI+++102'  
CUX+16:USD:3'  
NAD+BY+COMPUTER PARTS::92'  
LIN+1+1+PRODUCT:BP::92'  
QTY+445:1000:PCE'  
QTY+446:1500:PCE'  
PRI+AAA:53.60:BY::1:PCE'  
RFF+LI::1'  
SCC+1'  
QTY+445:1000'  
DTM+2:19970501:102'  
LIN+2+1+ITEM CODE:BP::92'  
QTY+444:750:PCE'  
PRI+AAA:76.60:BY::1:PCE'  
RFF+LI::2'  
SCC+1'  
QTY+444:750'  
DTM+2:19970601:102'  
UNS+S'  
UNT+25+1'  
UNZ+1+66'

EXAMPLE 4 REQUEST FOR DELIVERY QUOTATION

UNB+UNOC:3+234567891:1:X+198765432:1:X+971201:1924+66+X:AA+REQOTE+++1+X+1'  
UNH+1+REQOTE:D:97A:UN:EDRQ04'  
BGM+302+RFQ2+9'  
DTM+137:19970401:102'  
DTM+317:19970402:102'  
DTM+194:19970403:102'  
DTM+206:19970503:102'  
ALI+++104'  
CUX+16:GBP:3'  
NAD+BY+ELECTRONICS LTD::92'  
LIN+1+1+ITEM ABC:BP::92'  
QTY+444:2000:PCE'  
RFF+LI::001'  
SCC+1'  
QTY+444:1000'  
DTM+2:19970416:102'  
SCC+1'  
QTY+444:1000'  
DTM+2:19970516:102'  
UNS+S'  
UNT+20+1'  
UNZ+1+66'

EXAMPLE 5 REQUEST FOR SHIP & DEBIT PRICE QUOTATION

UNB+UNOC:3+234567891:1:X+198765432:1:X+971201:1924+66+X:AA+REQOTE++1+X+1'  
UNH+1+REQOTE:D:97A:UN:EDRQ04'  
BGM+308+RFQ4+9'  
DTM+137:19970401:102'  
DTM+36:19970901:102'  
ALI+++103'  
CUX+17:GBP:3'  
NAD+BY+DISTRIBUTOR::92'  
NAD+PC+EC12345::92'  
LIN+1+1+MATH COPROCESSOR:VP::91'  
QTY+444:75:PCE'  
PCD+5:30.5'  
PRI+AAA:90.50:BY::1:PCE'  
RFF+LI::1'  
RFF+DW:P00000028'  
UNS+S'  
UNT+16+1'  
UNZ+1+66'

EXAMPLE 6 REQUEST FOR SHIP & DEBIT PRICE QUOTATION (Confirmation of End Customer Booking)

UNB+UNOC:3+234567891:1:X+198765432:1:X+971201:1924+66+X:AA+REQOTE++1+X+1'  
UNH+1+REQOTE:D:97A:UN:EDRQ04'  
BGM+308+RFQ4+6'  
DTM+137:19970403:102'  
RFF+PR:Q0006'  
NAD+BY+DISTRIBUTOR::92'  
LIN+1+4+MATH COPROCESSOR:VP::91'  
RFF+LI::1'  
RFF+BSS:WON'  
UNS+S'  
UNT+10+1'  
UNZ+1+66'