



The Global Network for B2B Integration in High Tech Industries

EDIFICE Message Implementation Guideline Request for Quote

REQOTE Issue EDRQ10

Endorsed on 15 June 2011

Based on UN/EDIFACT D.10A REQOTE message

Copyright ©EDIFICE 2011

All rights reserved. No part of this publication may be reproduced or transmitted in any form or by any means without prior permission of EDIFICE.

Notwithstanding the fact that the utmost care has been observed in the collecting, drawing up and formulating of data, EDIFICE can under no circumstances be held liable for errors, omissions or misinterpretations as a result of the information compiled in the guidelines.

EDIFICE
The Global Network for B2B Integration in High Tech industries
EDIFICE secretariat
Dora Cresens
Tiensestraat 12
B-3320 Hoegaarden
Belgium
Tel: +32 475 85 40 39
Email: Dora.Cresens@edifice.org

TABLE OF CONTENTS

COMPARISON TO PREVIOUS ISSUE	3
EDIFICE FUNCTIONAL DEFINITION.....	6
REFERENCES	8
EXPLANATORY NOTES	8
MESSAGE STRUCTURE CHART	9
BRANCHING DIAGRAM	10
SEGMENT DESCRIPTION.....	13
SEGMENT DETAILS.....	17
EXAMPLES	46

COMPARISON TO PREVIOUS ISSUE

Issue EDRQ10 of 1 June 2011: Upgrade to UN/EDIFACT Directory D.10A

EDIFICE recommends to make use of EDIFACT code lists.

1. Where possible the earlier references to UN/ECE Recommendations were removed and EDIFACT qualifiers are used instead.
2. A number of EDIFICE defined qualifiers were replaced with relevant EDIFACT qualifiers or were completely removed when not in use. In some cases new EDIFICE qualifiers were defined since the old qualifiers have been included in the EDIFACT code list with a different definition

The summary of all qualifier changes in this MIG is listed below:

Place	EDIFICE Code (*)	Replaced with EDIFACT code/EDIFICE code (*)/Removed/Added
All DTM-2005	X03=CCYMMDDHHMMZZZZZ (*) X04=CCYMMDDHHMMSSZZZZZ (*)	205=CCYMMDDHHMMZHHMM Removed
BGM-1001	E01=Request for price quote (*) E02=Request for delivery quote (*) E03=Request for price and delivery quote (*) E04=Request for contract price quote (*) E05=Request for contract price and delivery quote (*) E06=Request for back to back price quote (*) E08=Request for ship & debit price quote (*) E09=Request for ship & debit price and delivery quote (*)	360 =Request for price quote 442 =Request for delivery quote 443 =Request for price and delivery quote 444 =Request for contract price quote 445 =Request for contract price and delivery quote 446 =Request for price quote, specified end-customer 438 =Request for price quote, ship and debit 439 =Request for price and delivery quote, ship and debit
ALI-4183	178=Costings (*) 179=Tender (*) 180=Mixed (*) 181=Design win (*) 182=Order to place (*) 183=To be advised (*) 184=Turns (*) 185=Promotion (*) 186=No design win registered (*) 187=Backlog protection (*) 188=Kit (*) 189=Demonstration equipment (*) 190=Volume (*) 191=Estimated annual quantity (*)	E78=Costings (*) E79=Tender (*) E80=Mixed (*) E81=Design win (*) E82=Order to place (*) E83=To be advised (*) E84=Turns (*) E85=Promotion (*) E86=No design win registered (*) E87=Backlog protection (*) E88=Kit (*) E89=Demonstration equipment (*) E90=Volume (*) E91=Estimated annual quantity (*)
SG27-LIN/PIA-7143	DI=Distributor's part number (*)	SSS=Distributor's article identifier
SG27-QTY-6063	467=Requested quantity (*) 468=Requested Delivery quantity (*) 469=Requested Price quantity (*)	E67=Requested quantity (*) E68=Requested Delivery quantity (*) E69=Requested Price quantity (*)
SG27-QTY-6411 SG31 PRI-6411	KTM=Kilometre UN/ECE Recommendation 20	Removed Removed
SG39-PAC-7065	TRY90=Standard Tray REL90=Standard Reel RAL90=Standard Rail BLK90= Standard Bulk	PU=Tray RL=Reel Removed Removed
SG55-QTY-6063	444=Requested quantity (*) 445=REquested Delivery quantity (*)	E67=Requested quantity (*) E68=Requested Delivery quantity (*)

Issue EDQT05 of 1 June 2005:

- Upgrade to UN/EDIFACT Code list D.04B

EDIFICE code changes applied to the MIG. These EDIFICE codes will be submitted to UN/CEFACT for inclusion in the UN/EDIFACT standard.

- ALI - DE 4183

'100' Costings replaced with '178' Costings

'101' Tender replaced with '179' Tender

'102' Mixed replaced with '180' Mixed

'103' Design Win replaced with '181' Design Win

'104' Order to place replaced with '182' Order to place
 '105' To be advised replaced with '183' To be advised
 '106' Turns replaced with '184' Turns
 '107' Promotion replaced with '185' Promotion
 '108' No design win registered replaced with '186' No design win registered
 '109' Backlog protection replaced with '187' Backlog protection
 '110' Kit replaced with '188' 'Kit'
 '111' Demonstration equipment replaced with '189' Demonstration equipment
 '112' Volume replaced with '190' Volume
 '113' Estimated annual quantity replaced with '191' Estimated annual quantity
 - SG27 - QTY - DE 6063:
 '447' Quoted quantity replaced with '470' Quoted quantity
 '448' Quoted delivery quantity replaced with '471' Quoted delivery quantity
 '449' Quoted price quantity replaced with '472' Quoted price quantity
 Replacement of EDIFICE codes with standard codes.
 - SG39 - PAC - DE 7065:
 'CN' Container replaced with 'CN' Container, not otherwise specified as transport equipment
 'PE' Pallet replaced with 'PX' Pallet
 - SG55 - DTM - DE 2005:
 '444' Quoted Delivery date replaced with '757' Quoted delivery date
 Correction of the examples according to the code changes.

12 May 2004 : EDIFIX 5.0 Technical Upgrade

- The 'KMT' qualifier in SEG QTY and PRI DE 6411 is now defined as (*) EDIFICE code. UN/ECE Recommendation 20 specifies 'KTM' as qualifier for 'kilometre'.

21 May 2003: EDIFIX 4.2 Technical upgrade; review and correction of examples

Issue EDQT04 of 13 November 2002 is based on UN/EDIFACT D97.A / Code List D01.A

- Addition of the following code value:
 SG27, LIN segment, CO C212, DE 7143 code 'SRV' EAN.UCC Global Trade Item Number
 SG27, PIA segment, CO C212, DE 7143 code 'SRV' EAN.UCC Global Trade Item Number

Issue EDQT03 of 29 May 2002 – addition of recommended set of DTM qualifiers

Issue EDQT03 includes the following changes compared to issue EDQT02 of 24 September 1997:

- Replacement of the following code:
 - UNH, DE 0057 Association assigned code EDQT03

 - Addition of the following segments:
 - SG31, RNG
 - SG31, DTM

Issue EDQT02 includes the changes that have been made to the issue 1 of the Quotation document endorsed by the EDIFICE Plenary on 22 June 1993. The changes are as follows:

- Recast from the 92.1 version of the UN/EDIFACT directory to the D.97A version,

- Addition of the following code values:
 SG11, NAD segment, DE 3055, code '16' DUNS (Dun & Bradstreet)
 SG27, LIN segment, DE 7143, codes 'DI' Distributor's part number
 'MF' Manufacturer's (producer's) article number and
 'UP' UPC (Universal product code)
 SG27, LIN segment, DE 3055, codes '89' Assigned by distributor
 '90' Assigned by manufacturer and
 '113' US, UCC (Uniform Code Council)
 SG27, PIA segment, DE 7143, codes 'CL' Color number
 'DI' Distributor's part number
 'DW' Drawing
 'MF' Manufacturer's (producer's) article number and
 'UP' UPC (Universal product code)
 SG27, PIA segment, DE 3055, codes '89' Assigned by distributor
 '90' Assigned by manufacturer and
 '113' US, UCC (Uniform Code Council)
 SG27, IMD segment, DE 7077, code 'C' Code (from industry code list)
 SG27, IMD segment, DE 7081, code '26' Ship to line
 SG39, PAC segment, DE 7065, codes 'BLK90' Standard Bulk
 'RAL90' Standard Rail (semiconductor)

'REL90' Standard Reel

'TRY90' Standard Tray

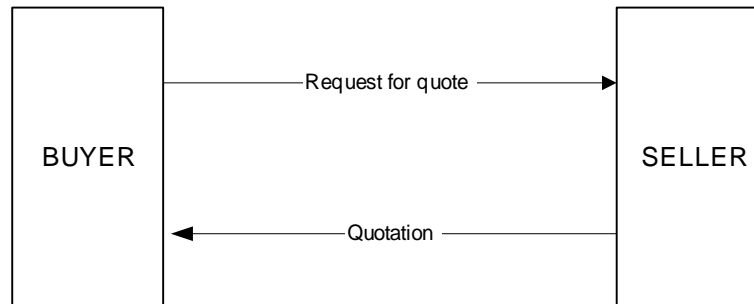
SG39, PAC segment, CO C202, DE 3055, code '116' US, ANSI ASC X12,

- Addition of the following segments:
 - SG1, DTM
 - SG6, LOC
 - SG39, QTY,
- Replacement of the following codes:
 - header DTM segment, CO C507, DE 2005, codes '341' to '194' Start date/time
'342' to '206' End date/time
 - SG1, RFF segment, CO C506, DE 1153, code 'BQ' to 'AHU' Request for quote number
 - SG4, CUX segment, CO C504, DE 6347, codes '6' to '16' (same value)
'7' to '17' (same value)
 - SG4, CUX segment, CO C504, DE 6343, codes '18' to '3' Home currency
'20' to '14' Supplier currency
 - SG27, PIA segment, DE 4347, code '5' to '1' Additional identification
 - SG27, PIA segment, CO C212, DE 7143, codes 'RN' to 'AA' Product version number
'SA' to 'VP' Vendor's (seller's) part
number
 - SG27, QTY segment, CO C186, DE 6063, codes '147' to '447' (same value)
'148' to '448' (same value)
'149' to '449' (same value)
 - SG31, PRI segment, CO C509, DE 5125, codes 'RES' and 'BUY' to 'AAA' Calculation net
 - SG55, QTY segment, CO C186, DE 6063, code '147' to '447' (same value)
'148' to '448' (same value)
 - SG55, DTM segment, CO C507, DE 2005, code '344' to '444' (same value),
- Usage changed for the following segment groups/segments/data elements:
 - all FTX segments, CO C107, X to A
CO C108, R to D
CO C108, 2nd to 5th DE 4440, D to O
 - SG4, D..2 to D..4
 - SG4, CUX segment, 2nd CO C504, O to N
 - SG6, TOD segment, CO C100, DE 1131, X to D
 - SG6, TOD segment, CO C100, DE 3055, X to D
 - SG27, IMD segment, DE 7081, A to O
 - SG27, IMD segment, CO C273, DE 7009, X to A
 - SG27, IMD segment, CO C273, 1st DE 7008, R to D
 - SG27, IMD segment, CO C273, 2nd DE 7008, D to O
 - SG39, O1 to D1
 - SG39, PAC segment, CO C202, DE 3055, X to D,
- Where UN/ECE Recommendations are referenced the most commonly used codes have been identified,
- Alignment of segments and composite data elements to ensure conformance (data harmonization) across all EDIFICE Implementation Guidelines,
- Update of the REFERENCES and EXPLANATORY NOTES sections to comply with the EDIFICE Standards for Documentation of Message Implementation Guidelines issue 3,
- Update of examples,
- Documentation adjustments resulting from the use of GEFEG's EdiFix Message Implementation Guidelines documentation tool,
- Correction of typographical errors.

EDIFICE FUNCTIONAL DEFINITION

EDIFICE provides two messages for the quotation process ; the Request for Quote (REQOTE) and the Quotation (QUOTES). Together they are used to satisfy the business needs of the quotation function.

The information flow is shown in the diagram below:



This EDIFICE guideline for the utilisation of the UN/EDIFACT QUOTES message caters for the issuing of a quotation of price and/or delivery for goods and/or services in response to a buyer's request for quote under a business or commercial agreement. It is assumed that this agreement defines all standard, basic trading terms and conditions as agreed between the two parties. As such, a Quotation constitutes a business function under this agreement, to which it will refer for basic terms and conditions.

The following principles apply:

- There is a one to one relationship between REQOTE and QUOTES.
- A QUOTES must apply to only one REQOTE.
- Once sent, a QUOTES may not be amended.
- Every Quotation message should have a unique document number assigned by the supplier and this must be sent in the BGM segment of the Quotation message.
- The buyer's Request for Quote number must be returned by the Seller in a Reference segment (RFF) at header level in the QUOTES message.
- Item Numbers are used to identify the product or service for which a quotation is being provided. Where this is not sufficient, the item must be identified by providing a clear description.
- The individual item lines for which a quotation was requested (REQOTE) should be identified unambiguously in the QUOTES message by returning the Buyers Request for Quote line number in a Reference segment (RFF) associated with each item line. Any other means of identification, or a decision that such identification is not required, must be agreed by both trading partners concerned and documented in the Trading Partner Agreement.
- Those Segment Groups, Segments and Data Elements which are labelled with 'O' (Optional) should be used only if the information they contain cannot be incorporated in the business or commercial agreement. The use of 'O' (Optional) must be agreed between trading partners.
- Nine variations of the Quotation message have been identified. The QUOTES message will be used to satisfy all nine variations. These variations are:
 1. Quotation of Price only (no delivery)
 2. Quotation of Delivery only (no price)
 3. Quotation of Price and Delivery.
 4. Contract Quotation (price and delivery)
This message is designed to facilitate the exchange of item, quantity, delivery and pricing information (at a minimum) between a supplier and a buyer. The contract quotation will be provided to the buyer by the supplier as part of a periodic contract negotiation and will include item pricing together with delivery schedules. This data is sent in response to a request for contract quotation.

The scope is that within an agreed timeframe, the buyer will purchase stated quantities in order to retain the quoted price and can be applied between:

- a manufacturer and an OEM customer,
- a manufacturer and a distributor,

- a manufacturer, distributor and end customer,
- a distributor and an end customer.

5. Contract Quotation (price only)
[refer to contract quotation (price and delivery) and omit all reference to delivery].

6. Ship & Debit Quotation (price and delivery)
This message is designed to facilitate the exchange of item, quantity, pricing and delivery information (at a minimum), between a Manufacturer and a Manufacturer's Agent (commonly referred to as a Distributor or Stockist) to authorise a price and delivery quotation request previously issued by the Agent.

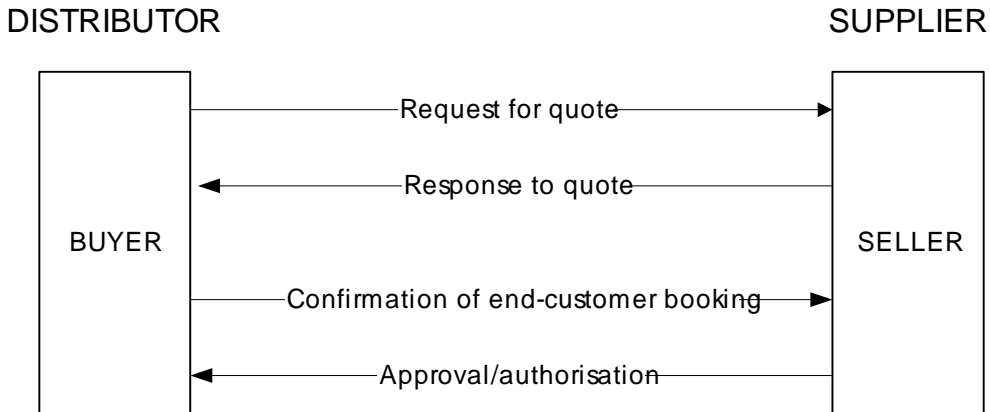
The Agent will frequently hold stock, purchased from the Manufacture at a fixed price with assumptions regarding expected margins (profit on the resale). In given circumstances/criteria the fixed Price Catalogue "Distributor Cost" (issued by the Manufacturer) does not return expected margins when the Agent resells the item to the third party customer.

In these situations the Agent will apply to the Manufacturer for a special buy price and specific deliver schedules and request a quoted price/delivery. This is followed by the Manufacturer authorising the quoted price/delivery, with or without changes.

This business practise (Ship & Debit) is common in the Electronics Industry with the Quote process an essential and critical part of the Ship & Debit cycle.

7. Ship & Debit Quotation (price only)
[refer to ship & debit quotation (price and delivery) and omit all reference to delivery].

There will be business situations within the Ship & Debit environment when the Distributor is unable to inform the Manufacturer (at time of the Request for Quotation) whether he has "won" the business. Where this happens four distinct processes (versus the standard two) will be undertaken using the REQOTE and QUOTES messages. The following demonstrates the data flow:



REFERENCES

Refer to the document : Reference list for the EDIFICE message guidelines – Issue 1

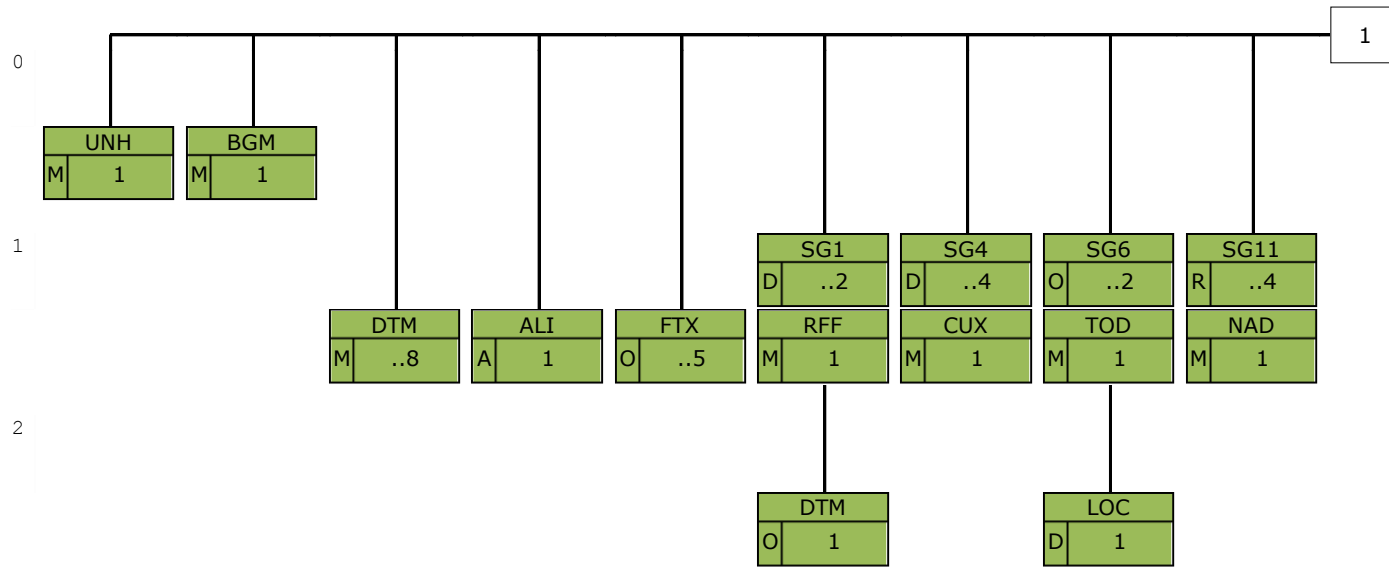
EXPLANATORY NOTES

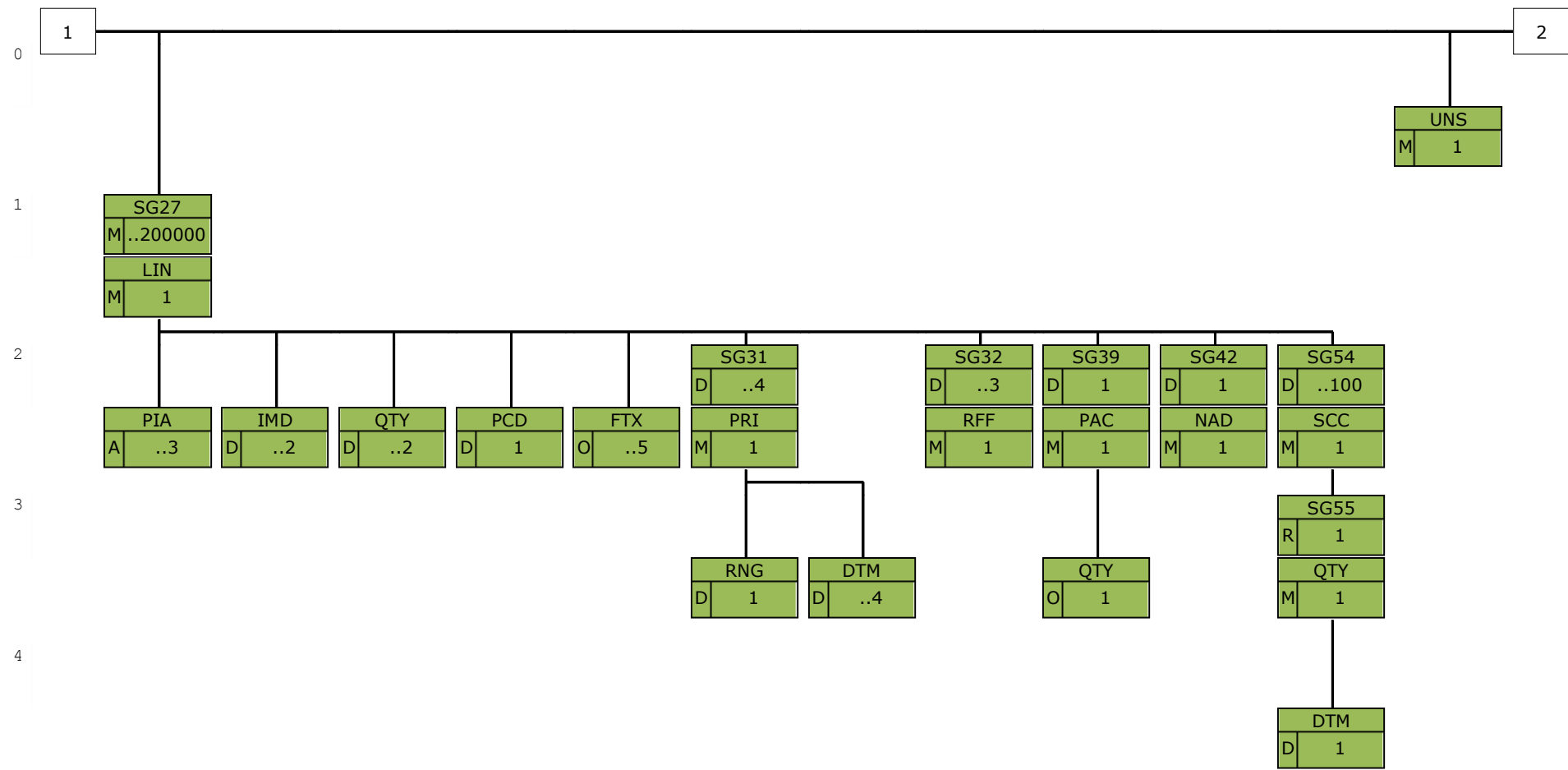
Refer to the document : Explanatory notes for the EDIFICE message guidelines – Issue 1

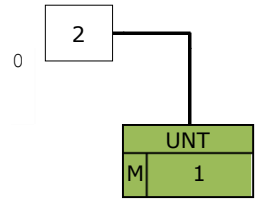
MESSAGE STRUCTURE CHART

UNH	Message header	M1
BGM	Beginning of message	M1
DTM	Date/time/period	M..8
ALI	Additional information	A 1
FTX	Free text	O..5
SG1		D..2
RFF	Reference	M1
DTM	Date/time/period	O 1
SG4		D..4
CUX	Currencies	M1
SG6		O..2
TOD	Terms of delivery or transport	M1
LOC	Place/location identification	D 1
SG11		R..4
NAD	Name and address	M1
SG27		M..200000
LIN	Line item	M1
PIA	Additional product id	A..3
IMD	Item description	D..2
QTY	Quantity	D..2
PCD	Percentage details	D 1
FTX	Free text	O..5
SG31		D..4
PRI	Price details	M1
RNG	Range details	D 1
DTM	Date/time/period	D..4
SG32		D..3
RFF	Reference	M1
SG39		D 1
PAC	Package	M1
QTY	Quantity	O 1
SG42		D 1
NAD	Name and address	M1
SG54		D..100
SCC	Scheduling conditions	M1
SG55		R 1
QTY	Quantity	M1
DTM	Date/time/period	D 1
UNS	Section control	M1
UNT	Message trailer	M1

BRANCHING DIAGRAM







SEGMENT DESCRIPTION

UNH Message header

Function: A service segment heading, and uniquely identifying the message.
Usage: M1

BGM Beginning of message

Function: A segment uniquely identifying the message by means of its coded name, number and function.
Usage: M1

DTM Date/time/period

Function: A segment specifying the date of creation of the message and, other dates relevant to the whole message.
Usage: M..8

ALI Additional information

Function: A segment indicating that special conditions due to the origin, fiscal or commercial factors are applicable.
Usage: A 1

FTX Free text

Function: A segment providing free form or coded text information, applicable to the whole message.
Usage: O..5

SG1 RFF-DTM

Function: A group of segments referencing documents and their dates, relating to the whole message.
Usage: D..2
Notes: This segment group should be used where a contract number and/or a previously assigned supplier quote number needs to be sent.

RFF Reference

Function: A segment specifying a document reference number.
Usage: M1

DTM Date/time/period

Function: A segment specifying the date of the reference document.
Usage: O 1

SG4 CUX

Function: A group of segments specifying the currencies for all prices, valid for the whole message.
Usage: D..4
Notes: There must be at least one segment group for each price type stated (buyer/competitor buy and/or resale prices), if prices are sent in the message.

CUX Currencies

Function: A segment specifying a buyer's or competitor's currency.
Usage: M1

SG6 TOD-LOC

Function: A group of segments indicating the terms of delivery to be quoted in response to this request.
Usage: O..2
Notes: To be used only if it is necessary to be specific about terms of delivery and the relevant location points. The LOC segment is only used if the terms of delivery ('F' & 'C') require a named location/place.

TOD Terms of delivery or transport

Function: A segment specifying the terms of delivery to be used.
Usage: M1

LOC Place/location identification

Function: A segment identifying a location or place required for the terms of delivery.
Usage: D 1

SG11 NAD

Function: A group of segments identifying the parties involved and their associated information, relevant to the whole message.

Usage: R ..4

Notes: EDIFICE requires that this segment group be used at least once to identify the sender of the document (buyer).

This segment group may also be used to identify the recipient of the request for quotation (seller).

For ship & debit and for back-to-back quotation requests, EDIFICE requires the actual purchaser's customer to be identified using this segment group.

NAD Name and address

Function: A segment identifying the function and coded identification, name and address of a party involved.

Usage: M 1

SG27 LIN-PIA-IMD-QTY-PCD-FTX-SG31-SG32-SG39-SG42-SG54

Function: A group of segments providing details of the individual line items i.e. products for which a quotation is being requested.

Usage: M..200000

Notes: On a re-issue request for quote, only the LIN and RFF segments need be sent if DE 1229 = '4' (No action). On a cancellation of a request for quote, only one 'dummy' LIN segment with DE 1229 = '2' need be sent. The IMD segment is used to provide an additional description of the primary reference. It may also be used for items that can not be identified by a code or article number.

The QTY segment is required on the first issue of a request for quote line (BGM Message Function Code = '9'). There will be instances within a price & delivery request for quotation where the quantity associated with the price will be different to the quantity associated with the delivery and vice versa.

The PCD segment may be used to provide the required profit percentage and is only expected to be relevant in a supplier/distributor relationship.

SG31 is only required when a price or price and delivery quote is requested. The segment group should be repeated for each price type which pertains to the quote request.

Up to four occurrences are envisaged:

- buyer's requested buy price
- buyer's target resale price
- competitor's quoted buy price
- competitor's quoted resale price

SG32 may be used to indicate the buyer's request for quote line number. It may also be used to specify a 'design win' registration number and/or a business status indicator.

SG39 may be used where alternative packaging methods are agreed between trading partners.

SG42 should be sent if the buyer agrees to indicate to the provider of a quotation the source of a competitor price which has been provided in a PRI segment associated with this line item.

SG54 is not required if DE 1001 in the BGM segment = 'E01', 'E04', 'E06' or 'E08'.

LIN Line item

Function: A segment identifying a line item by its item number, and agreed to be the primary reference number between the buyer and seller.
The segment also carries a sequence number assigned to the line item within the message, and the action taken.

Usage: M 1

PIA Additional product id

Function: A segment providing additional identification for the line item.

Usage: A ..3

IMD Item description

Function: A segment specifying ship to stock or ship to line quality and/or an additional description in clear or coded form, for the line item.

Usage: D..2

QTY Quantity

Function: A segment specifying the total quantity for the line item for which a quotation is being requested
Usage: D..2

PCD Percentage details

Function: A segment specifying the required profit percentage for the line item.
Usage: D 1

FTX Free text

Function: A segment providing free form or coded text information for the line item.
Usage: O..5

SG31 PRI-RNG-DTM

Function: A group of segments specifying pricing and range information for the line item.
Usage: D..4
Notes:

PRI Price details

Function: A segment specifying the line item price and the qualifying information.
Usage: M 1

RNG Range details

Function: A segment specifying the line item range
Usage: D 1

DTM Date/time/period

Function: A segment specifying the date applying to the range.
Usage: D..4

SG32 RFF

Function: A group of segments specifying references for the line item.
Usage: D..3
Notes: The individual line items for which a quotation is requested should be identified unambiguously in the REQOTE message by sending the buyer's request for quote line number in a RFF segment associated with each item line. Any other means of identification, or a decision that such identification is not required, must be agreed by both trading partners concerned and documented in the Trading Partner Agreement.

RFF Reference

Function: A segment specifying a line item reference number.
Usage: M 1

SG39 PAC-QTY

Function: A group of segments specifying product packaging information for the line item.
Usage: D 1
Notes: This segment group may be used where alternative packaging methods are agreed between the trading partners.

PAC Package

Function: A segment specifying the product package type.
Usage: M 1

QTY Quantity

Function: A segment specifying the number of products contained in the package type.
Usage: O 1

SG42 NAD

Function: A group of segments identifying the parties involved and their associated information, relevant to the line item.
Usage: D 1
Notes:

NAD Name and address

Function: A segment identifying the function and coded identification, name and address of the competitor involved.
Usage: M 1

SG54 SCC-SG55

Function: A group of segments specifying firm delivery dates and the quantities scheduled for the line item, associated with a request for delivery quotation or a request for price and delivery quotation.
Usage: D..100
Notes: If a quotation is being requested for a delivery, the buyer has the option of providing a required delivery date or of requesting the supplier to offer the best delivery terms available. If the latter is the case then an associated DTM segment would not be required within SG55.

SCC Scheduling conditions

Function: A segment specifying a firm delivery.
Usage: M 1

SG55 QTY-DTM

Function: A group of segments specifying the delivery dates and the quantities scheduled.
Usage: R 1
Notes:

QTY Quantity

Function: A segment specifying a quantity.
Usage: M 1

DTM Date/time/period

Function: A segment specifying the corresponding date of the quantity.
Usage: D 1

UNS Section control

Function: A service segment separating the detail and summary section.
Usage: M 1

UNT Message trailer

Function: A service segment ending, and providing information for checking the completeness of a message.
Usage: M 1

SEGMENT DETAILS



UNH Message header

Function: A service segment heading, and uniquely identifying the message.

Usage : M1

Notes : Refer to EDIFICE utilisation of the UN/EDIFACT service segments, Issue EDSS10

Ref.	Rep.	Name	EDIFICE Utilisation
0062	an..14	M MESSAGE REFERENCE NUMBER	M
S009		M MESSAGE IDENTIFIER	M
0065	an..6	M Message type	M
0052	an..3	M Message version number	M
0054	an..3	M Message release number	M
0051	an..3	M Controlling agency, coded	M
0057	an..6	C Association assigned code	R
0110	an..6	C Code list directory version number	N
0113	an..6	C Message type sub-function identification	N
0068	an..35	C COMMON ACCESS REFERENCE	N
S010		C STATUS OF THE TRANSFER	N
0070	n..2	M Sequence of transfers	N
0073	a1	C First and last transfer	N
S016		C MESSAGE SUBSET IDENTIFICATION	N
0115	an..14	M Message subset identification	N
0116	an..3	C Message subset version number	N
0118	an..3	C Message subset release number	N
0051	an..3	C Controlling agency, coded	N
S017		C MESSAGE IMPLEMENTATION GUIDELINE IDENTIFICATION	N
0121	an..14	M Message implementation guideline identification	N
0122	an..3	C Message implementation guideline version number	N
0124	an..3	C Message implementation guideline release number	N
0051	an..3	C Controlling agency, coded	N
S018		C SCENARIO IDENTIFICATION	N
0127	an..14	M Scenario identification	N
0128	an..3	C Scenario version number	N
0130	an..3	C Scenario release number	N
0051	an..3	C Controlling agency, coded	N

REQOTE = Request for quote message
 A code to identify the request for quote message.
D = Draft version/UN/EDIFACT Directory
10A = Release 2010 - A
UN = UN/CEFACT
EDRQ10 = Request for quote Issue EDRQ10

BGM Beginning of message

Function: A segment uniquely identifying the message by means of its coded name, number and function.

Usage : M1

Notes :

Ref.	Rep.	Name		EDIFICE Utilisation
C002		C DOCUMENT/MESSAGE NAME	R	
1001	an..3	C Document name code	R	<p>360 = Request for price quote Replaces EDIFICE code E01=Request for price quote</p> <p>438 = Request for price quote, ship and debit Replaces EDIFICE code E08=Request for ship and debit price quote</p> <p>439 = Request for price and delivery quote, ship and debit Replaces EDIFICE code E09=Request for ship and debit price and delivery quote</p> <p>442 = Request for delivery quote Replaces EDIFICE code E02=Request for delivery quote</p> <p>443 = Request for price and delivery quote Replaces EDIFICE code E03=Request for price and delivery quote</p> <p>444 = Request for contract price quote Replaces EDIFICE code E04=Request for contract price quote</p> <p>445 = Request for contract price and delivery quote Replaces EDIFICE code E05=Request for contract price and delivery quote</p> <p>446 = Request for price quote, specified end-customer Replaces EDIFICE code E06=Request for back to back price quote</p> <p>E07 = Request for back to back price and delivery quote (*) Request for price and delivery quote, specified end-customer</p> <p>(*) EDIFICE code</p>
1131	an..17	C Code list identification code	N	
3055	an..3	C Code list responsible agency code	N	
1000	an..35	C Document name	N	
C106		C DOCUMENT/MESSAGE IDENTIFICATION	R	
1004	an..70	C Document identifier	R	Buyer's Request for quote number which must be unique unless DE 1225 is equal to '6'; then the combined contents of DE 1004 and DE 1225 must be unique.
1056	an..9	C Version identifier	N	
1060	an..6	C Revision identifier	N	
1225	an..3	C MESSAGE FUNCTION CODE	R	<p>1 = Cancellation Cancel quote request; if used, only one 'dummy' LIN segment need be sent</p> <p>6 = Confirmation Used by ship & debit upon confirmation of end customer booking</p> <p>9 = Original Original quote request</p> <p>18 = Reissue Re-issue quote request; a request for better terms</p>
4343	an..3	C RESPONSE TYPE CODE	N	

DTM Date/time/period

Function: A segment specifying the date of creation of the message and, other dates relevant to the whole message.

Usage : M..8

Notes : At least one DTM segment must be present, specifying the document creation date.

Ref.	Rep.	Name		EDIFICE Utilisation
C507		M DATE/TIME/PERIOD	M	
2005	an..3	M Date or time or period function code qualifier	M	36 = Expiry date Validity end date of quote requested by the buyer 37 = Ship not before date/time Supplier to buyer or buyer to end customer in cases of ship & debit 38 = Ship not later than date/time Supplier to buyer or buyer to end customer in cases of ship & debit 137 = Document issue date time Date when the document is created 157 = Validity start date Validity start date of quote requested by the buyer 194 = Start date/time Start date of buyer placing order on supplier 206 = End date/time End date of buyer placing order on supplier 317 = Reply date The date by which the recipient must respond
2380	an..35	C Date or time or period text	R	
2379	an..3	C Date or time or period format code	R	102 = CCYYMMDD 203 = CCYYMMDDHHMM 205 = CCYYMMDDHHMMZHHMM Replaces EDIFICE code X03=CCYYMMDDHHMMZZZZ 303 = CCYYMMDDHHMMZZZ ZZZ = Time zone 304 = CCYYMMDDHHMMSSZZZ ZZZ = Time zone

ALI Additional information

Function: A segment indicating that special conditions due to the origin, fiscal or commercial factors are applicable.
 Usage : A 1
 Notes : EDIFICE advises that the commercial reason for the quote request be specified in this segment. Where commercial requirements dictate there may be instances, where more than one DE 4183 are sent depending on the value of the data held in the first occurrence of DE 4183.

Ref.	Rep.	Name	EDIFICE Utilisation	
3239	an..3	C COUNTRY OF ORIGIN IDENTIFIER	N	
9213	an..3	C DUTY REGIME TYPE CODE	N	
4183	an..3	C SPECIAL CONDITION CODE	R	(*) EDIFICE code E78 = Costings (*) Replaces EDIFICE code 178 E79 = Tender (*) Replaces EDIFICE code 179 E80 = Mixed (*) Replaces EDIFICE code 180 E81 = Design win (*) Replaces EDIFICE code 181 E82 = Order to place (*) Replaces EDIFICE code 182 E83 = To be advised (*) Replaces EDIFICE code 183 E84 = Turns (*) Replaces EDIFICE code 184 E85 = Promotion (*) Replaces EDIFICE code 185 E86 = No design win registered (*) Replaces EDIFICE code 186 E87 = Backlog protection (*) Replaces EDIFICE code 187 E88 = Kit (*) Replaces EDIFICE code 188 E89 = Demonstration equipment (*) Replaces EDIFICE code 189 E90 = Volume (*) Replaces EDIFICE code 190 E91 = Estimated annual quantity (*) Replaces EDIFICE code 191
4183	an..3	C SPECIAL CONDITION CODE	D	As for first DE 4183
4183	an..3	C SPECIAL CONDITION CODE	D	As for first DE 4183
4183	an..3	C SPECIAL CONDITION CODE	D	As for first DE 4183
4183	an..3	C SPECIAL CONDITION CODE	D	As for first DE 4183

FTX Free text

Function: A segment providing free form or coded text information, applicable to the whole message.
 Usage : O..5
 Notes : EDIFICE recommends not to use FTX segments.

Where possible, use CO C107 rather than CO C108.

Ref.	Rep.	Name		EDIFICE Utilisation
4451	an..3	M TEXT SUBJECT CODE QUALIFIER	M	GEN = Entire transaction set 1 = Text for subsequent use The occurrence of this text does not affect message processing. 3 = Text for immediate use Text must be read before processing the message.
4453	an..3	C FREE TEXT FUNCTION CODE	A	
C107		C TEXT REFERENCE	N	
4441	an..17	M Free text description code	M	
1131	an..17	C Code list identification code	N	
3055	an..3	C Code list responsible agency code	N	
C108		C TEXT LITERAL	D	
4440	an..512	M Free text	M	
4440	an..512	C Free text	O	
4440	an..512	C Free text	O	
4440	an..512	C Free text	O	
4440	an..512	C Free text	O	
3453	an..3	C LANGUAGE NAME CODE	N	
4447	an..3	C FREE TEXT FORMAT CODE	N	

SG1 RFF-DTM

RFF Reference

Function: A segment specifying a document reference number.
 Usage : M1
 Notes :

Ref.	Rep.	Name		EDIFICE Utilisation
C506		M REFERENCE	M	CT = Contract number PR = Price quote number Supplier's quote number
1153	an..3	M Reference code qualifier	M	
1154	an..70	C Reference identifier	R	
1156	an..6	C Document line identifier	N	
1056	an..9	C Version identifier	N	
1060	an..6	C Revision identifier	N	

SG1 RFF-DTM**DTM Date/time/period**

Function: A segment specifying the date of the reference document.

Usage : 01

Notes :

Ref.	Rep.	Name		EDIFICE Utilisation
C507		M DATE/TIME/PERIOD	M	
2005	an..3	M Date or time or period function code qualifier	M	171 = Reference date/time
2380	an..35	C Date or time or period text	R	
2379	an..3	C Date or time or period format code	R	102 = CCYYMMDD 203 = CCYYMMDDHHMM 205 = CCYYMMDDHHMMZHHMM Replaces EDIFICE code X03=CCYYMMDDHHMMZZZZ 303 = CCYYMMDDHHMMZZZ ZZZ = Time zone 304 = CCYYMMDDHHMMSSZZZ ZZZ = Time zone

SG4 CUX
CUX Currencies

Function: A segment specifying a buyer's or competitor's currency.

Usage : M1

Notes : This segment may be used to specify up to two price type currencies. i.e. buyer/competitor buy and/or resale prices.

Ref.	Rep.	Name		EDIFICE Utilisation
C504		C CURRENCY DETAILS	R	
6347	an..3	M Currency usage code qualifier	M	19 = Competitor's currency (*)
				(*) EDIFICE code
6345	an..3	C Currency identification code	R	Use ISO 4217, 3 alpha code
6343	an..3	C Currency type code qualifier	R	3 = Home currency
				Buyer's currency
6348	n..4	C Currency rate	N	
C504		C CURRENCY DETAILS	N	
6347	an..3	M Currency usage code qualifier	N	
6345	an..3	C Currency identification code	N	
6343	an..3	C Currency type code qualifier	N	
6348	n..4	C Currency rate	N	
5402	n..12	C CURRENCY EXCHANGE RATE	N	
6341	an..3	C EXCHANGE RATE CURRENCY	N	
		MARKET IDENTIFIER		

SG6 TOD-LOC
TOD Terms of delivery or transport

Function: A segment specifying the terms of delivery to be used.

Usage : M1

Notes :

Ref.	Rep.	Name		EDIFICE Utilisation
4055	an..3	C DELIVERY OR TRANSPORT TERMS FUNCTION CODE	R	1 = Price condition 3 = Price and despatch condition 6 = Delivery condition
4215	an..3	C TRANSPORT CHARGES PAYMENT METHOD CODE	N	
C100		C TERMS OF DELIVERY OR TRANSPORT	R	
4053	an..3	C Delivery or transport terms description code	R	Incoterms code list: Group E - Departure EXW = Ex Works (... named place) Group F - Main carriage unpaid FAS = Free Along Ship (... named port of shipment) FCA = Free Carrier (... named place) FOB = Free On Board (... named port of shipment) Group C - Main carriage paid CFR = Cost and Freight CIF = Cost, Insurance, Freight (... named port of destination) CIP = Carriage and Insurance Paid to (... named place of destination) CPT = Carriage Paid To (... named place of destination) Group D - Arrival DAF = Delivered At frontier (... named place) DDP = Delivered Duty Paid (... named place of destination) DDU = Delivered Duty Unpaid (... named place of destination) DEQ = Delivered Ex Quay (Duty paid) (... named port of destination) DES = Delivered Ex Ship (... named port of destination) If not applicable, use code from another appropriate code set in DE 4053 in combination with DE 1131/ 3055.
1131	an..17	C Code list identification code	D	
3055	an..3	C Code list responsible agency code	D	
4052	an..70	C Delivery or transport terms description	N	
4052	an..70	C Delivery or transport terms description	N	

SG6 TOD-LOC

LOC Place/location identification

Function: A segment identifying a location or place required for the terms of delivery.
 Usage : D1
 Notes :

Ref.	Rep.	Name		EDIFICE Utilisation
3227	an..3	M LOCATION FUNCTION CODE QUALIFIER	M	1 = Place of terms of delivery
C517		C LOCATION IDENTIFICATION	R	
3225	an..35	C Location identifier	R	Use UN/ECE Recommendation no.16, UNLOCODE. If not applicable, use codes from another appropriate code set in combination with DE 1131/3055.
1131	an..17	C Code list identification code	D	
3055	an..3	C Code list responsible agency code	D	3 = IATA (International Air Transport Association) 91 = Assigned by seller or seller's agent 92 = Assigned by buyer or buyer's agent
3224	an..256	C Location name	N	
C519		C RELATED LOCATION ONE IDENTIFICATION	N	
3223	an..35	C First related location identifier	N	
1131	an..17	C Code list identification code	N	
3055	an..3	C Code list responsible agency code	N	
3222	an..70	C First related location name	N	
C553		C RELATED LOCATION TWO IDENTIFICATION	N	
3233	an..35	C Second related location identifier	N	
1131	an..17	C Code list identification code	N	
3055	an..3	C Code list responsible agency code	N	
3232	an..70	C Second related location name	N	
5479	an..3	C RELATION CODE	N	

SG11 NAD
NAD Name and address

Function: A segment identifying the function and coded identification, name and address of a party involved.

Usage : M1

Notes : It is advised that the party identification CO C082 be used. When CO C082 cannot be used it is recommended to use the structured name and address CO C080 through DE 3207 rather than the unstructured one CO C058.

Ref.	Rep.	Name		EDIFICE Utilisation
3035	an..3	M PARTY FUNCTION CODE QUALIFIER	M	BY = Buyer It is to be assumed that delivery will be made to the buyer's address, unless a delivery party is specified. DP = Delivery party PC = Actual purchaser's customer End customer SE = Seller
C082		C PARTY IDENTIFICATION DETAILS	A	
3039	an..35	M Party identifier	M	Code identifying the party
1131	an..17	C Code list identification code	N	
3055	an..3	C Code list responsible agency code	R	9 = GS1 16 = US, D&B (Dun & Bradstreet Corporation) 91 = Assigned by seller or seller's agent 92 = Assigned by buyer or buyer's agent
C058		C NAME AND ADDRESS	D	
3124	an..35	M Name and address description	M	
3124	an..35	C Name and address description	O	
3124	an..35	C Name and address description	O	
3124	an..35	C Name and address description	O	
3124	an..35	C Name and address description	O	
C080		C PARTY NAME	D	
3036	an..70	M Party name	M	
3036	an..70	C Party name	O	
3036	an..70	C Party name	O	
3036	an..70	C Party name	O	
3036	an..70	C Party name	O	
3036	an..70	C Party name	O	
3045	an..3	C Party name format code	N	
C059		C STREET	D	
3042	an..35	M Street and number or post office box identifier	M	
3042	an..35	C Street and number or post office box identifier	O	
3042	an..35	C Street and number or post office box identifier	O	
3042	an..35	C Street and number or post office box identifier	O	
3164	an..35	C CITY NAME	D	
C819		C COUNTRY SUBDIVISION DETAILS	C	
3229	an..9	C Country subdivision identifier	D	
1131	an..17	C Code list identification code	N	
3055	an..3	C Code list responsible agency code	N	
3228	an..70	C Country subdivision name	N	
3251	an..17	C POSTAL IDENTIFICATION CODE	D	
3207	an..3	C COUNTRY IDENTIFIER	D	Use ISO 3166, 2 alpha code

SG27 LIN-PIA-IMD-QTY-PCD-FTX-SG31-SG32-SG39-SG42-SG54

LIN Line item

Function: A segment identifying a line item by its item number, and agreed to be the primary reference number between the buyer and seller.
The segment also carries a sequence number assigned to the line item within the message, and the action taken.

Usage : M1

Notes :

Ref.	Rep.	Name	EDIFICE Utilisation
1082	an..6	C LINE ITEM IDENTIFIER	R It is required to assign a number to the line items within a message. The number is assigned by the sender of the message. The first line item within a message will be numbered 1 and further line items will be incremented by 1 for each new line.
1229	an..3	C ACTION CODE	R <ul style="list-style-type: none"> 1 = Added To be used for an original quote request 2 = Deleted To be used when cancelling a request for quote 4 = No action May be used on a re-issued request for quote. It may also be used for ship & debit confirmation. In this case, it should be supported by a business status indicator in an associated RFF segment. 90 = Reissued To be used on a re-issued request for quote
C212		C ITEM NUMBER IDENTIFICATION	A
7140	an..35	C Item identifier	R Primary reference
7143	an..3	C Item type identification code	R <ul style="list-style-type: none"> BP = Buyer's part number EN = International Article Numbering Association (EAN) MF = Manufacturer's (producer's) article number SRV = EAN.UCC Global Trade Item Number SSS = Distributor's article identifier Replaces EDIFACT code DI=Distributor's part number UP = UPC (Universal product code) VP = Vendor's (seller's) part number
1131	an..17	C Code list identification code	N
3055	an..3	C Code list responsible agency code	R <ul style="list-style-type: none"> 9 = GS1 89 = Assigned by distributor 90 = Assigned by manufacturer 91 = Assigned by seller or seller's agent 92 = Assigned by buyer or buyer's agent 113 = GS1 US
C829		C SUB-LINE INFORMATION	N
5495	an..3	C Sub-line indicator code	N
1082	an..6	C Line item identifier	N
1222	n..2	C CONFIGURATION LEVEL NUMBER	N
7083	an..3	C CONFIGURATION OPERATION CODE	N

SG27 LIN-PIA-IMD-QTY-PCD-FTX-SG31-SG32-SG39-SG42-SG54

PIA Additional product id

Function: A segment providing additional identification for the line item.
 Usage : A..3
 Notes : The 5 internal repetitions of CO C212 may be used, but EDIFICE recommends to only use the first occurrence.

Ref.	Rep.	Name		EDIFICE Utilisation
4347	an..3	M PRODUCT IDENTIFIER CODE QUALIFIER	M	1 = Additional identification
C212		M ITEM NUMBER IDENTIFICATION	M	
7140	an..35	C Item identifier	R	
7143	an..3	C Item type identification code	R	AA = Product version number Number assigned by manufacturer or seller to identify the release of a product BP = Buyer's part number CL = Colour number DR = Drawing revision number DW = Drawing EC = Engineering change level EN = International Article Numbering Association (EAN) MF = Manufacturer's (producer's) article number SRV = EAN.UCC Global Trade Item Number SSS = Distributor's article identifier Replaces EDIFACT code DI=Distributor's part number UP = UPC (Universal product code) VP = Vendor's (seller's) part number
1131	an..17	C Code list identification code	N	
3055	an..3	C Code list responsible agency code	R	9 = GS1 89 = Assigned by distributor 90 = Assigned by manufacturer 91 = Assigned by seller or seller's agent 92 = Assigned by buyer or buyer's agent 113 = GS1 US
C212		C ITEM NUMBER IDENTIFICATION	O	As for first CO C212
7140	an..35	C Item identifier	R	
7143	an..3	C Item type identification code	R	
1131	an..17	C Code list identification code	N	
3055	an..3	C Code list responsible agency code	R	
C212		C ITEM NUMBER IDENTIFICATION	O	As for first CO C212
7140	an..35	C Item identifier	R	
7143	an..3	C Item type identification code	R	
1131	an..17	C Code list identification code	N	
3055	an..3	C Code list responsible agency code	R	
C212		C ITEM NUMBER IDENTIFICATION	O	As for first CO C212
7140	an..35	C Item identifier	R	
7143	an..3	C Item type identification code	R	
1131	an..17	C Code list identification code	N	
3055	an..3	C Code list responsible agency code	R	
C212		C ITEM NUMBER IDENTIFICATION	O	As for first CO C212
7140	an..35	C Item identifier	R	
7143	an..3	C Item type identification code	R	
1131	an..17	C Code list identification code	N	
3055	an..3	C Code list responsible agency code	R	

SG27 LIN-PIA-IMD-QTY-PCD-FTX-SG31-SG32-SG39-SG42-SG54

IMD Item description

Function: A segment specifying ship to stock or ship to line quality and/or an additional description in clear or coded form, for the line item.

Usage : D..2

Notes :

Ref.	Rep.	Name		EDIFICE Utilisation
7077	an..3	C DESCRIPTION FORMAT CODE	D	C = Code (from industry code list) F = Free-form
C272		C ITEM CHARACTERISTIC	C	
7081	an..3	C Item characteristic code	O	3 = Ship to stock 26 = Ship to line
1131	an..17	C Code list identification code	N	
3055	an..3	C Code list responsible agency code	N	
C273		C ITEM DESCRIPTION	D	Use DE 7009 for a coded description. If no code is available use DE 7008 instead.
7009	an..17	C Item description code	A	
1131	an..17	C Code list identification code	N	
3055	an..3	C Code list responsible agency code	N	
7008	an..256	C Item description	D	
7008	an..256	C Item description	O	
3453	an..3	C Language name code	N	
7383	an..3	C SURFACE OR LAYER CODE	N	

SG27 LIN-PIA-IMD-QTY-PCD-FTX-SG31-SG32-SG39-SG42-SG54

QTY Quantity

Function: A segment specifying the total quantity for the line item for which a quotation is being requested
 Usage : D..2
 Notes : The measure unit qualifier used in DE 6411 applies to all the underlying QTY segments.

Ref.	Rep.	Name		EDIFICE Utilisation
C186		M QUANTITY DETAILS	M	
6063	an..3	M Quantity type code qualifier	M	<p>E67 = Requested quantity (*) Replaces EDIFICE code 467</p> <p>E68 = Requested delivery quantity (*) To be used only if delivery quantity is different to price quantity Replaces EDIFICE code 468</p> <p>E69 = Requested price quantity (*) To be used only if price quantity is different to delivery quantity Replaces EDIFICE code 469</p>
6060	an..35	M Quantity	M	(*) EDIFICE code Total line quantity
6411	an..8	C Measurement unit code	R	<p>CLT = centilitre</p> <p>CMT = centimetre</p> <p>EA = each</p> <p>GRM = gram</p> <p>H87 = piece</p> <p>KGM = kilogram</p> <p>KMT = kilometre</p> <p>LTR = litre</p> <p>MGM = milligram</p> <p>MMT = millimetre</p> <p>MTK = square metre</p> <p>MTQ = cubic metre</p> <p>MTR = metre</p> <p>PCE = piece (*) EDIFICE Code 'PCE' is widely adopted by membership and preferred over the EDIFACT code 'H87'</p> <p>(*) EDIFICE code Other codes should be previously agreed between trading partners.</p>

SG27 LIN-PIA-IMD-QTY-PCD-FTX-SG31-SG32-SG39-SG42-SG54

PCD Percentage details

Function: A segment specifying the required profit percentage for the line item.

Usage : D 1

Notes :

Ref.	Rep.	Name	EDIFICE Utilisation	
C501		M PERCENTAGE DETAILS	M	
5245	an..3	M Percentage type code qualifier	M	5 = Entry percentage
5482	n..10	C Percentage	R	Percentage value
5249	an..3	C Percentage basis identification code	N	
1131	an..17	C Code list identification code	N	
3055	an..3	C Code list responsible agency code	N	
4405	an..3	C STATUS DESCRIPTION CODE	N	

SG27 LIN-PIA-IMD-QTY-PCD-FTX-SG31-SG32-SG39-SG42-SG54

FTX Free text

Function: A segment providing free form or coded text information for the line item.
 Usage : O..5
 Notes : EDIFICE recommends not to use FTX segments.
 Where possible, use CO C107 rather than CO C108.

Ref.	Rep.	Name		EDIFICE Utilisation
4451	an..3	M TEXT SUBJECT CODE QUALIFIER	M	LIN = Line item 1 = Text for subsequent use The occurrence of this text does not affect message processing 3 = Text for immediate use Text must be read before processing the message
4453	an..3	C FREE TEXT FUNCTION CODE	A	
C107		C TEXT REFERENCE	N	
4441	an..17	M Free text description code	M	
1131	an..17	C Code list identification code	N	
3055	an..3	C Code list responsible agency code	N	
C108		C TEXT LITERAL	D	
4440	an..512	M Free text	M	
4440	an..512	C Free text	O	
4440	an..512	C Free text	O	
4440	an..512	C Free text	O	
4440	an..512	C Free text	O	
3453	an..3	C LANGUAGE NAME CODE	N	
4447	an..3	C FREE TEXT FORMAT CODE	N	

SG31 PRI-RNG-DTM

PRI Price details

Function: A segment specifying the line item price and the qualifying information.

Usage : M1

Notes :

Ref.	Rep.	Name		EDIFICE Utilisation
C509		C PRICE INFORMATION	R	
5125	an..3	M Price code qualifier	M	AAA = Calculation net
5118	n..15	C Price amount	R	
5375	an..3	C Price type code	R	BY = Buyer (*) CO = Competitor (*) (*) EDIFICE code
5387	an..3	C Price specification code	N	
5284	n..9	C Unit price basis quantity	R	
6411	an..8	C Measurement unit code	R	CLT = centilitre CMT = centimetre EA = each GRM = gram H87 = piece KGM = kilogram KMT = kilometre LTR = litre MGM = milligram MMT = millimetre MTK = square metre MTQ = cubic metre MTR = metre PCE = piece (*) EDIFICE Code 'PCE' is widely adopted by membership and preferred over the EDIFACT code 'H87' (*) EDIFICE code Other codes should be previously agreed between trading partners.
5213	an..3	C SUB-LINE ITEM PRICE CHANGE OPERATION CODE	N	

SG31 PRI-RNG-DTM
RNG Range details

Function: A segment specifying the line item range

Usage : D1

Notes : This segment is only used when the request for quote is related to a contract, i.e. BGM , DE 1001 = '304 Request for contract price quote' or '305 Request for contract price & delivery quote'

Ref.	Rep.	Name		EDIFICE Utilisation
6167	an..3	M RANGE TYPE CODE QUALIFIER	M	4 = Quantity range H87 = piece PCE = Piece (*) EDIFICE Code 'PCE' is widely adopted by membership and preferred over the EDIFACT code 'H87' (*) EDIFICE code
C280		C RANGE	R	
6411	an..8	M Measurement unit code	M	
6162	n..18	C Range minimum quantity	R	
6152	n..18	C Range maximum quantity	R	Range maximum

SG31 PRI-RNG-DTM**DTM Date/time/period**

Function: A segment specifying the date applying to the range.

Usage : D..4

Notes : This segment is only used when the request for quote is related to a contract, i.e. BGM , DE 1001 = '304 Request for contract price quote' or '305 Request for contract price & delivery quote'

Ref.	Rep.	Name	EDIFICE Utilisation	
C507		M DATE/TIME/PERIOD	M	
2005	an..3	M Date or time or period function code qualifier	M	37 = Ship not before date/time 38 = Ship not later than date/time 194 = Start date/time 206 = End date/time
2380	an..35	C Date or time or period text	R	Date
2379	an..3	C Date or time or period format code	R	102 = CCYYMMDD 203 = CCYYMMDDHHMM 205 = CCYYMMDDHHMMZHHMM Replaces EDIFICE code X03=CCYYMMDDHHMMZZZZ 303 = CCYYMMDDHHMMZZZ ZZZ = Time zone 304 = CCYYMMDDHHMMSSZZZ ZZZ = Time zone

SG32 RFF

RFF Reference

Function: A segment specifying a line item reference number.

Usage : M1

Notes : If DE 1229 = '4' (No action) in the LIN segment and DE 1225 in the BGM segment = '6' (Confirmation), then an RFF segment (SG32) containing a business status indicator must be sent.

Ref.	Rep.	Name	EDIFICE Utilisation
C506		M REFERENCE	M
1153	an..3	M Reference code qualifier	M
1154	an..70	C Reference identifier	D
1156	an..6	C Document line identifier	D
1056	an..9	C Version identifier	N
1060	an..6	C Revision identifier	N

BSS = Business status indicator (*)
DW = Design win (*)
LI = Document line identifier
 (*) EDIFICE code
 Must be used if DE 1153 = 'DW' or 'BSS'; if DE 1153 = 'BSS' then the contents of DE 1154 are to be agreed between the trading partners, e.g. 'WON' = Business won, 'LOST' = Business lost.
 Must contain the buyer's item line number if DE 1153 = 'LI'

SG39 PAC-QTY

PAC Package

Function: A segment specifying the product package type.

Usage : M1

Notes :

Ref.	Rep.	Name		EDIFICE Utilisation
7224	n..8	C PACKAGE QUANTITY	N	
C531		C PACKAGING DETAILS	N	
7075	an..3	C Packaging level code	N	
7233	an..3	C Packaging related description code	N	
7073	an..3	C Packaging terms and conditions code	N	
C202		C PACKAGE TYPE	R	
7065	an..17	C Package type description code	R	BA = Barrel BB = Bobbin BE = Bundle BG = Bag BQ = Bottle, protected cylindrical BV = Bottle, protected bulbous BX = Box CG = Cage CN = Container, not otherwise specified as transport equipment CR = Crate CS = Case CT = Carton CX = Can, cylindrical DR = Drum EN = Envelope NE = Unpacked or unpackaged PC = Parcel PK = Package PU = Tray pack Replaces formerly defined Code TRY90 PX = Pallet RL = Reel Replaces formerly defined Code REL90 RO = Roll SW = Shrinkwrapped TN = Tin TU = Tube Other codes should be previously agreed between trading partners.
1131	an..17	C Code list identification code	N	
3055	an..3	C Code list responsible agency code	D	Only used if non-EDIFACT codes are defined in 7065
7064	an..35	C Type of packages	N	
C402		C PACKAGE TYPE IDENTIFICATION	N	
7077	an..3	M Description format code	N	
7064	an..35	M Type of packages	N	
7143	an..3	C Item type identification code	N	
7064	an..35	C Type of packages	N	
7143	an..3	C Item type identification code	N	
C532		C RETURNABLE PACKAGE DETAILS	N	
8395	an..3	C Returnable package freight payment responsibility code	N	
8393	an..3	C Returnable package load contents code	N	

SG39 PAC-QTY

QTY Quantity

Function: A segment specifying the number of products contained in the package type.

Usage : 01

Notes :

Ref.	Rep.	Name		EDIFICE Utilisation
C186		M QUANTITY DETAILS	M	
6063	an..3	M Quantity type code qualifier	M	52 = Quantity per pack
6060	an..35	M Quantity	M	
6411	an..8	C Measurement unit code	N	

SG42 NAD
NAD Name and address

Function: A segment identifying the function and coded identification, name and address of the competitor involved.

Usage : M1

Notes : It is advised that the party identification CO C082 be used. When CO C082 cannot be used it is recommended to use the structured name and address CO C080 through DE 3207 rather than the unstructured one CO C058.

Ref.	Rep.	Name		EDIFICE Utilisation
3035	an..3	M PARTY FUNCTION CODE QUALIFIER	M	CMP = Competitor (*) (*) EDIFICE code Code identifying the party 9 = GS1 16 = US, D&B (Dun & Bradstreet Corporation) 91 = Assigned by seller or seller's agent 92 = Assigned by buyer or buyer's agent
C082		C PARTY IDENTIFICATION DETAILS	A	
3039	an..35	M Party identifier	M	
1131	an..17	C Code list identification code	N	
3055	an..3	C Code list responsible agency code	R	
C058		C NAME AND ADDRESS	D	
3124	an..35	M Name and address description	M	
3124	an..35	C Name and address description	O	
3124	an..35	C Name and address description	O	
3124	an..35	C Name and address description	O	
3124	an..35	C Name and address description	O	
C080		C PARTY NAME	D	
3036	an..70	M Party name	M	
3036	an..70	C Party name	O	
3036	an..70	C Party name	O	
3036	an..70	C Party name	O	
3036	an..70	C Party name	O	
3045	an..3	C Party name format code	N	
C059		C STREET	D	
3042	an..35	M Street and number or post office box identifier	M	
3042	an..35	C Street and number or post office box identifier	O	
3042	an..35	C Street and number or post office box identifier	O	
3042	an..35	C Street and number or post office box identifier	O	
3164	an..35	C CITY NAME	D	
C819		C COUNTRY SUBDIVISION DETAILS	C	
3229	an..9	C Country subdivision identifier	D	
1131	an..17	C Code list identification code	N	
3055	an..3	C Code list responsible agency code	N	
3228	an..70	C Country subdivision name	N	
3251	an..17	C POSTAL IDENTIFICATION CODE	D	
3207	an..3	C COUNTRY IDENTIFIER	D	Use ISO 3166, 2 alpha code

SG54 SCC-SG55

SCC Scheduling conditions

Function: A segment specifying a firm delivery.

Usage : M1

Notes :

Ref.	Rep.	Name		EDIFICE Utilisation
4017	an..3	M DELIVERY PLAN COMMITMENT LEVEL CODE	M	1 = Firm
4493	an..3	C DELIVERY INSTRUCTION CODE	N	
C329		C PATTERN DESCRIPTION	N	
2013	an..3	C Frequency code	N	
2015	an..3	C Despatch pattern code	N	
2017	an..3	C Despatch pattern timing code	N	

SG55 QTY-DTM

QTY Quantity

Function: A segment specifying a quantity.

Usage : M1

Notes : This segment is used to specify the breakdown of the total quotation request line quantity into its constituent delivery quantities (i.e. multiple drops).

Ref.	Rep.	Name		EDIFICE Utilisation
C186		M QUANTITY DETAILS	M	
6063	an..3	M Quantity type code qualifier	M	E67 = Requested quantity (*) Replaces EDIFICE code 467 E68 = Requested delivery quantity (*) Replaces EDIFICE code 468 (*) EDIFICE code
6060	an..35	M Quantity	M	
6411	an..8	C Measurement unit code	N	

SG55 QTY-DTM**DTM Date/time/period**

Function: A segment specifying the corresponding date of the quantity.

Usage : D 1

Notes : If a quotation is being requested for a delivery, the buyer has the option of either supplying the required delivery date, or of requesting the supplier to offer the best delivery terms available. If the latter is the case then the associated DTM segment need not be sent.

Ref.	Rep.	Name		EDIFICE Utilisation
C507		M DATE/TIME/PERIOD	M	
2005	an..3	M Date or time or period function code qualifier	M	2 = Delivery date/time, requested
2380	an..35	C Date or time or period text	R	
2379	an..3	C Date or time or period format code	R	102 = CCYYMMDD 203 = CCYYMMDDHHMM 205 = CCYYMMDDHHMMZHHMM Replaces EDIFICE code X03=CCYYMMDDHHMMZZZZ 303 = CCYYMMDDHHMMZZZ ZZZ = Time zone 304 = CCYYMMDDHHMMSSZZZ ZZZ = Time zone

UNS Section control

Function: A service segment separating the detail and summary section.
 Usage : M1
 Notes :

Ref.	Rep.	Name	EDIFICE Utilisation	
0081	a1	M SECTION IDENTIFICATION	M	S = Detail/summary section separation

UNT Message trailer

Function: A service segment ending, and providing information for checking the completeness of a message.

Usage : M1

Notes : Refer to EDIFICE utilisation of the UN/EDIFACT service segments, Issue EDSS10.

Ref.	Rep.	Name	EDIFICE Utilisation	
0074	n..10	M NUMBER OF SEGMENTS IN A MESSAGE	M	Count of all segments in the message, UNH and UNT included.
0062	an..14	M MESSAGE REFERENCE NUMBER	M	Must be the same reference number as in DE 0062 of the UNH segment of this message.

EXAMPLES

EXAMPLE 1 REQUEST FOR PRICE QUOTATION

UNB+UNOW:4+234567891:1:X+198765432:1:X+971201:1924+66+X:AA+REQOTE++1+X+1'
UNH+1+REQOTE:D:10A:UN:EDRQ10'
BGM+301+RFQ1+9'
DTM+137:20100401:102'
DTM+36:20100601:102'
ALI+++185'
CUX+16:GBP:3'
NAD+BY+ELECTRONICS LTD::92'
LIN+1+1+WIDGET:BP::92'
PIA+1+XYZ:DR::92'
IMD++3'
QTY+467:1000:PCE'
PRI+AAA:25.10:BY::1:PCE'
RFF+LI::001'
UNS+S'
UNT+15+1'
UNZ+1+66'

EXAMPLE 2 REQUEST FOR PRICE QUOTATION (RE-ISSUE)

UNB+UNOW:4+234567891:1:X+198765432:1:X+971201:1924+66+X:AA+REQOTE++1+X+1'
UNH+1+REQOTE:D:10A:UN:EDRQ10'
BGM+301+RFQ1A+18'
DTM+137:20100403:102'
DTM+36:20100601:102'
ALI+++185'
RFF+PR:Q001'
CUX+16:GBP:3'
NAD+BY+ELECTRONICS LTD::92'
LIN+1+33+WIDGET:BP::92'
PIA+1+XYZ:DR::92'
IMD++3'
QTY+467:1000:PCE'
PRI+AAA:25.10:BY::1:PCE'
PRI+AAA:25.20:CO::1:PCE'
RFF+LI::001'
NAD+CMP+BETTER BUY::92'
UNS+S'
UNT+18+1'
UNZ+1+66'

EXAMPLE 3 REQUEST FOR PRICE & DELIVERY QUOTATION

UNB+UNOW:4+234567891:1:X+198765432:1:X+971201:1924+66+X:AA+REQOTE++1+X+1'
UNH+1+REQOTE:D:10A:UN:EDRQ10'
BGM+303+RFQ3+9'
DTM+137:20100401:102'
DTM+157:20100406:102'
DTM+36:19970806:102'
ALI+++180'
CUX+16:USD:3'
NAD+BY+COMPUTER PARTS::92'
LIN+1+1+PRODUCT:BP::92'
QTY+468:1000:PCE'
QTY+469:1500:PCE'
PRI+AAA:53.60:BY::1:PCE'
RFF+LI::1'
SCC+1'
QTY+445:1000'
DTM+2:19970501:102'
LIN+2+1+ITEM CODE:BP::92'
QTY+467:750:PCE'
PRI+AAA:76.60:BY::1:PCE'
RFF+LI::2'
SCC+1'
QTY+467:750'
DTM+2:20100601:102'
UNS+S'
UNT+25+1'
UNZ+1+66'

EXAMPLE 4 REQUEST FOR DELIVERY QUOTATION

UNB+UNOW:4+234567891:1:X+198765432:1:X+971201:1924+66+X:AA+REQOTE++1+X+1'
UNH+1+REQOTE:D:10A:UN:EDRQ10'
BGM+302+RFQ2+9'
DTM+137:20100401:102'
DTM+317:20100402:102'
DTM+194:20100403:102'
DTM+206:20100503:102'
ALI+++182'
CUX+16:GBP:3'
NAD+BY+ELECTRONICS LTD::92'
LIN+1+1+ITEM ABC:BP::92'
QTY+467:2000:PCE'
RFF+LI::001'
SCC+1'
QTY+467:1000'
DTM+2:20100416:102'
SCC+1'
QTY+467:1000'
DTM+2:20100516:102'
UNS+S'
UNT+20+1'
UNZ+1+66'

EXAMPLE 5 REQUEST FOR SHIP & DEBIT PRICE QUOTATION

UNB+UNOW:4+234567891:1:X+198765432:1:X+971201:1924+66+X:AA+REQOTE++1+X+1'
UNH+1+REQOTE:D:10A:UN:EDRQ10'
BGM+308+RFQ4+9'
DTM+137:20100401:102'
DTM+36:20100901:102'
ALI+++181'
CUX+17:GBP:3'
NAD+BY+DISTRIBUTOR::92'
NAD+PC+EC12345::92'
LIN+1+1+MATH COPROCESSOR:VP::91'
QTY+467:75:PCE'
PCD+5:30.5'
PRI+AAA:90.50:BY::1:PCE'
RFF+LI::1'
RFF+DW:P00000028'
UNS+S'
UNT+16+1'
UNZ+1+66'

EXAMPLE 6 REQUEST FOR SHIP & DEBIT PRICE QUOTATION (Confirmation of End Customer Booking)

UNB+UNOW:4+234567891:1:X+198765432:1:X+971201:1924+66+X:AA+REQOTE++1+X+1'
UNH+1+REQOTE:D:10A:UN:EDRQ10'
BGM+308+RFQ4+6'
DTM+137:20100403:102'
RFF+PR:Q0006'
NAD+BY+DISTRIBUTOR::92'
LIN+1+4+MATH COPROCESSOR:VP::91'
RFF+LI::1'
RFF+BSS:WON'
UNS+S'
UNT+10+1'
UNZ+1+66'