



EDIFICE Message Implementation Guideline
Despatch Advice

DESADV Issue EDDS06

Endorsed 28 November 2001

Based on UN/EDIFACT D.97A DESADV Message

Copyright ©EDIFICE 2004

All rights reserved. No part of this publication may be reproduced or transmitted in any form or by any means without prior permission of EDIFICE.

Notwithstanding the fact that the utmost care has been observed in the collecting, drawing up and formulating of data, EDIFICE can under no circumstances be held liable for errors, omissions or misinterpretations as a result of the information compiled in the guidelines.

EDIFICE
The European B2B Forum for the Electronics Industry
EDIFICE secretariat
Dora Cresens
Tiensestraat 2
B-3320 Hoegaarden
Belgium
Tel: +32 16 76 54 40
Fax: +32 16 76 53 58
Email: Dora.Cresens@edifice.org

TABLE OF CONTENTS

<u>TITLE</u>	<u>PAGE</u>
COMPARISON TO PREVIOUS ISSUE	3
EDIFICE FUNCTIONAL DEFINITION	5
REFERENCES	6
EXPLANATORY NOTES	6
MESSAGE STRUCTURE CHART	7
BRANCHING DIAGRAM	8
SEGMENT GROUPS/SEGMENTS DESCRIPTION	11
UNH MESSAGE HEADER	18
BGM BEGINNING OF MESSAGE	19
DTM DATE/TIME/PERIOD	20
MEA MEASUREMENTS	21
MOA MONETARY AMOUNT	22
SG1 - RFF REFERENCE	23
SG1 - DTM DATE/TIME/PERIOD	24
SG2 - NAD NAME AND ADDRESS	25
SG3 - RFF REFERENCE	26
SG4 - CTA CONTACT INFORMATION	27
SG4 - COM COMMUNICATION CONTACT	28
SG5 - TOD TERMS OF DELIVERY OR TRANSPORT	29
SG5 - LOC PLACE/LOCATION IDENTIFICATION	30
SG6 - TDT DETAILS OF TRANSPORT	31
SG7 - LOC PLACE/LOCATION IDENTIFICATION	32
SG7 - DTM DATE/TIME/PERIOD	33
SG8 - EQD EQUIPMENT DETAILS	34
SG8 - SEL SEAL NUMBER	35
SG10 - CPS CONSIGNMENT PACKING SEQUENCE	36
SG11 - PAC PACKAGE	37
SG11 - MEA MEASUREMENTS	38
SG11 - QTY QUANTITY	39
SG12 - HAN HANDLING INSTRUCTIONS	40
SG13 - PCI PACKAGE IDENTIFICATION	41
SG13 - RFF REFERENCE	42
SG14 - GIN GOODS IDENTITY NUMBER	43
SG15 - LIN LINE ITEM	44
SG15 - PIA ADDITIONAL PRODUCT ID	45
SG15 - IMD ITEM DESCRIPTION	46
SG15 - MEA MEASUREMENTS	47
SG15 - QTY QUANTITY	48
SG15 - ALI ADDITIONAL INFORMATION	49
SG15 - GIN GOODS IDENTITY NUMBER	50
SG15 - DTM DATE/TIME/PERIOD	51
SG15 - MOA MONETARY AMOUNT	52
SG16 - RFF REFERENCE	53
SG16 - DTM DATE/TIME/PERIOD	54
UNT MESSAGE TRAILER	55
EXAMPLES	56 - 65

COMPARISON TO PREVIOUS ISSUE

12 May 2004 : EDIFIX 5.0 Technical Upgrade

- The 'KMT' qualifier in SEG QTY DE 6411 is now defined as (*) EDIFICE code. UN/ECE Recommendation 20 specifies 'KTM' as qualifier for 'kilometre'.

03 November 2003 : Correction of SG Structure. This change does not affect the functionality of the message, it only affects the documentation.

SG10 CPS-SG11-**SG12-SG13-SG14** – Changed to SG10 CPS-SG11-SG15

SG11 PAC-MEA-QTY-SG12-SG13-**SG14** – Changed to SG11 PAC-MEA-QTY-SG12-SG13

21 May 2003: EDIFIX 4.2 Technical upgrade; review and correction of examples

Issue EDDS06 13 November:

- Addition of the following code value:

SG15, LIN segment, CO C212, DE 7143 codes 'SRV' EAN.UCC Global Trade Item Number

SG15, PIA segment, CO C212, DE 7143 codes 'SRV' EAN.UCC Global Trade Item Number

Issue EDDS06 29 May 2002 – addition of recommended set of DTM qualifiers

Issue EDDS06 9 November 2001 : Addition of the UN/EDIFACT qualifiers related to License Plate included in the UN/EDIFACT D.01A Code list.

- Addition of the following code values:

SG14, GIN segment, DE 7405, codes 'VZ' = Transport unit identification according to ISO/IEC 15459 - Data Identifier 'J'

'WA' = Indivisible transport unit according to ISO/IEC 15459 - Data Identifier '1J'

'WB' = Divisible transport unit according to ISO/IEC 15459 Data Identifier '2J'

- The examples have been updated according the additional qualifiers for license plate.

Issue EDDS05 24 November 1999: Addition of UN/ECE Recommendation No 21 qualifier RO = Roll in SG11 PAC C202/7065

Issue EDDS05 24 September 1997

This release includes the changes that have been made to the issue 4 of the Despatch Advice document endorsed by the EDIFICE Plenary on 12 June 1996. The changes are as follows:

- Recast from the D.96A version of the UN/EDIFACT directory to the D.97A version,

- Addition of the following code values:

all DTM segments, DE 2379, code '303' CCYMMDDHHMMZZZ

SG1, RFF segment, DE 1153, codes 'MWB' Master air waybill number and

'SRN' Shipment reference number

SG6, TDT, CO C040, DE 3055, codes '9' EAN (International Article Numbering association) and

'16' DUNS (Dun & Bradstreet)

SG7, LOC, CO C517, DE 3055, codes '3' IATA (International Air Transport Association)

'91' Assigned by seller or seller's agent and

'92' Assigned by buyer or buyer's agent

Header/SG11, MEA segments, code 'CMQ' cubic centimetre

SG11, PAC segment, DE 7065, codes 'CN' Container

'PE' Pallet

SG15, LIN segment, DE 7143, code 'DI' Distributor's part number

SG15, LIN segment, DE 3055, codes '89' Assigned by distributor

'90' Assigned by manufacturer and

'113' US, UCC (Uniform Code Council)

SG15, PIA segment, DE 7143, codes 'AA' Product version number

'CL' Color number

'DI' Distributor's part number

'MN' Model number and

'SN' Serial number

SG15, PIA segment, DE 3055, codes '89' Assigned by distributor

'90' Assigned by manufacturer

'113' US, UCC (Uniform Code Council)

SG15, IMD segment, DE 7081, code '26' Ship to line

SG15, ALI segment, 1st DE 4183, codes '1' Item for national preference

'6' Subject to bonus

'16' Subject to embargo restriction

'18' Item subject to national export restrictions

'20' Item subject to import restrictions

'BW' Bonded warehouse

'SG1' Controlled, industrial goods, not US origin

'SG2' Controlled, industrial goods, US origin
'SG3' Controlled by US national regulation(s)
'SG4' Controlled by other national regulation(s)
'SG5' Controlled by Australian Group for chemical or
biological warfare (CBW)
'SG6' Controlled by missile technology control regime
(MTCR)
'SG8' Controlled, nuclear goods
'SG9' Controlled, military goods

SG16, RFF segment, CO C506, DE 1153, codes 'EB' Embargo permit number and
'EN' Embargo number,

- Addition of the following segment:
SG15, DTM segment after GIN segment,
- Deletion of the following code values:
SG4, COM segment, DE 3155, code 'TL' Telex
SG15, LIN segment, CO C212, DE 7143, codes 'IN' Buyer's item number
'SA' Supplier's article number
SG15, LIN segment, CO C212, DE 3055, code '16' DUNS (Dun & Bradstreet)
SG15, PIA segment, CO C212, DE 7143, codes 'IN' Buyer's item number
'SA' Supplier's article number
SG15, PIA segment, CO C212, DE 3055, code '16' DUNS (Dun & Bradstreet),
- Usage changed for the following segment groups/segments/data elements:
SG1, DTM segment, O1 to D1
SG2, NAD segment, CO C080, DE 3045, O to N
SG4, COM segment, O..4 to O..3
SG5, O..10 to O1
SG6, D..5 to D..10
SG15, LIN segment, DE 1082, A to R
SG15, LIN segment, CO C212, R to A
SG15, LIN segment, CO C212, DE 3055, O to R
SG15, PIA segment, CO C212, DE 3055, O to R
SG15, IMD segment, O1 to D1
SG15, IMD segment, DE 7077, O to D
SG15, IMD segment, CO C273, A to D
SG15, IMD segment, CO C273, DE 1131, O to N
SG15, IMD segment, CO C273, DE 3055, O to N
SG15, ALI segment, O1 to D1
SG15, ALI segment, DE 3239, R to A
SG15, ALI segment, 1st DE 4183, O to D
SG15, ALI segment, 2nd - 5th DE 4183, X to O
SG15, MOA segment, O1 to D1
SG16, A..5 to A..7
SG16, DTM segment, O1 to D1,
- Where UN/ECE Recommendations are referenced the most commonly used codes have been identified,
- Alignment of segments and composite data elements to ensure conformance (data harmonization) across all EDIFICE Implementation Guidelines,
- Update of the REFERENCES and EXPLANATORY NOTES sections to comply with the EDIFICE Standards for Documentation of Message Implementation Guidelines issue 3,
- Update of examples,
- Documentation adjustments resulting from the use of GEFEG's EdiFix Message Implementation Guidelines documentation tool,
- Correction of typographical errors.

EDIFICE FUNCTIONAL DEFINITION

The Despatch Advice is defined as a logistics transaction message sent by the consignor and is intended to advise the consignee of the despatch of goods and the detailed contents of the consignment, to enable the receiving location to control the incoming material flow and prepare customs clearance procedures.

The message relates to a single consignment, a single despatch point and a single destination point, with one set of delivery terms. It may cover a number of different items or packages.

The Despatch Advice message relates to one buyer and one seller. It should always be sent by the seller to the buyer before the goods are physically delivered. This makes it possible for the buyer to know when the goods have been despatched, or will be despatched, and use the data to prepare efficiently for the reception of the goods. The message can also be used by the seller to indicate to the buyer that the goods are ready to be collected (an EXWORKS trade scenario), or if the goods are Returns.

The Despatch Advice message holds precise details of the shipment.

Each unit delivered e.g. pallet, carton, should be uniquely identified. In the Despatch Advice message, the products contained in each uniquely identified unit are described. When the goods are received, the physical shipment and the electronic message can be cross-checked e.g. by barcode scanning. Discrepancies can be immediately identified, and these may be transmitted back to the seller by use of the Receiving Advice (RECADV) message.

The message enables a hierarchical description of the shipment, starting with the highest level (shipment) and ending with the lowest level (items). One can for example describe a container comprising 5 pallets, a pallet being composed of several large despatch units which themselves contain smaller despatch units. The traded units (any level of packaging agreed by the trading partners) are then specified. It is however not mandatory to describe the hierarchical structure of the shipment. As such, the simplest use of the message consists of specifying the items to be despatched, or collected, and the relevant information per item such as quantity and description. Please refer to the examples at the back of this document.

Additional principles that apply to the Despatch Advice message are:

- Part numbers are used to identify the product that is being despatched. Where this is not sufficient, the part must be identified by providing a clear description.
- References pertaining to the goods are specified only at one level, normally within the detail section. Where the information is applicable to the whole despatch advice, it can be sent in the header section, in which case it should not be sent at the detail level.
- Total shipment weights, volume and number of unit loads should be specified in the header section of the message i.e. in the MEA segment below the BGM.
- Business practices reflect two possible ways of describing the contents of the shipment; by the physical packaging, or by the products (with package information related to each product). The physical packaging logic describes package per package starting from the outer packages and ending with the inner packages. The product(s) are identified at the lowest level of the packaging. The product logic describes per product (with related package information). It is recommended that users of this guide adopt the Package logic to describe the contents of the despatch advice.
- The segment groups, segments and data elements which are labelled with 'O' (optional) should be used only if the information they contain cannot be incorporated in the business or commercial agreements. The use of 'O' (optional) must be agreed between trading partners.

It is recognised that information pertaining to the goods and or the transport of the goods, may change after the initial message has been sent. Under the International Custom's Regulations - and subsequently the International Law's of Trade and Commerce - CHANGES (of the contents) of "Accountable Data and/or Documents" are prohibited. Instead, CANCELLATION (of the entire document) and REPLACEMENT (by a new document) are imperative. All Accountable Documents - including the cancelled ones - have to be safeguarded for a period of at least 5 years or longer, depending on national prescriptions.

To accommodate these scenarios, both 'replace' and 'cancellation' message types are catered for by use of BGM, DE 1225.

REFERENCES

Refer to the document : Reference list for the EDIFICE message guidelines – Issue 1

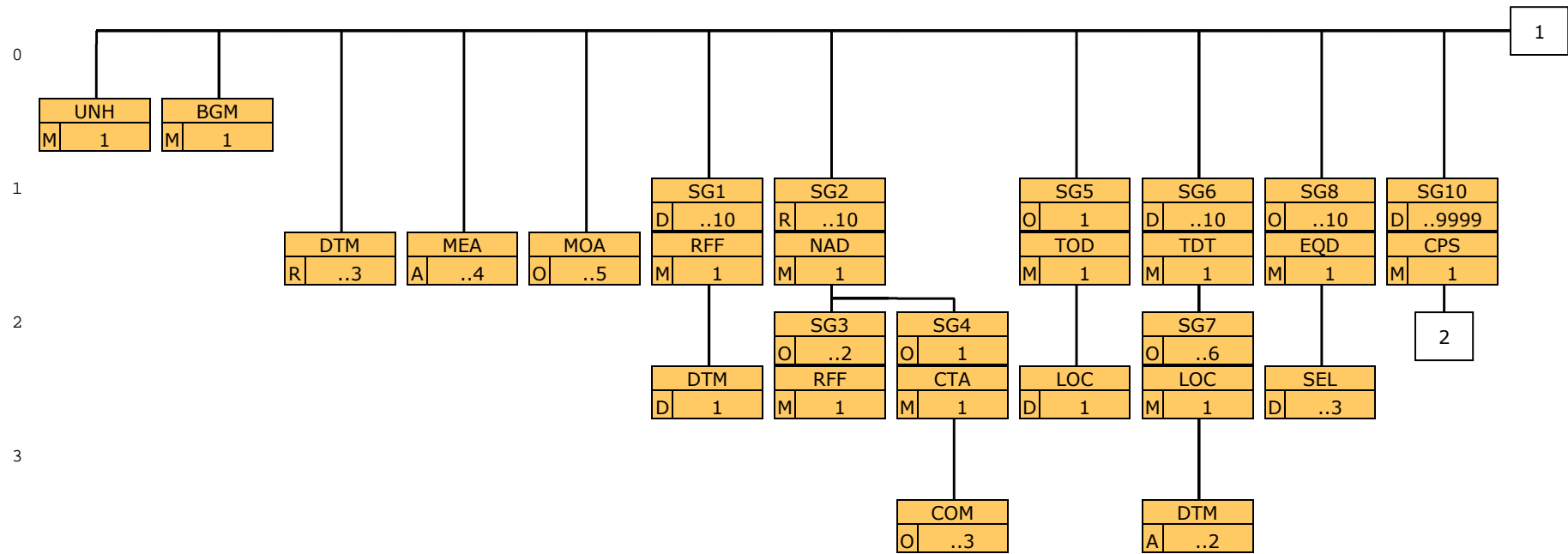
EXPLANATORY NOTES

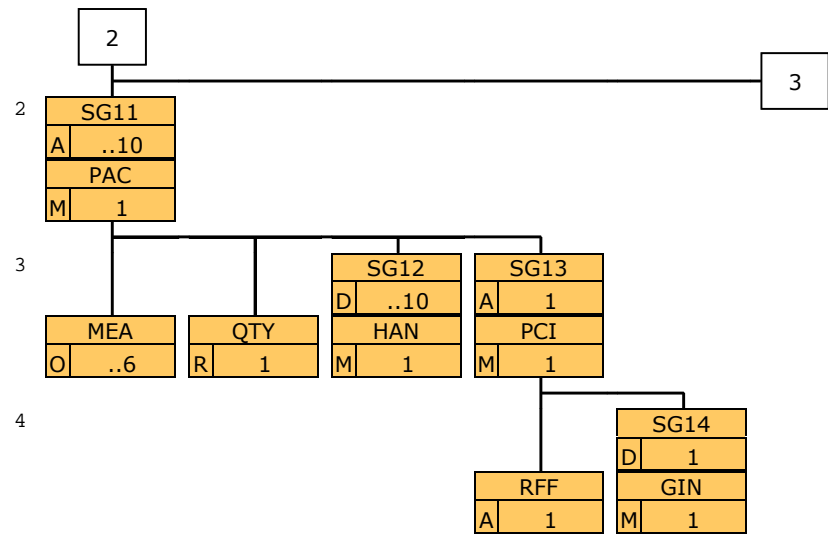
Refer to the document : Explanatory notes for the EDIFICE message guidelines – Issue 1

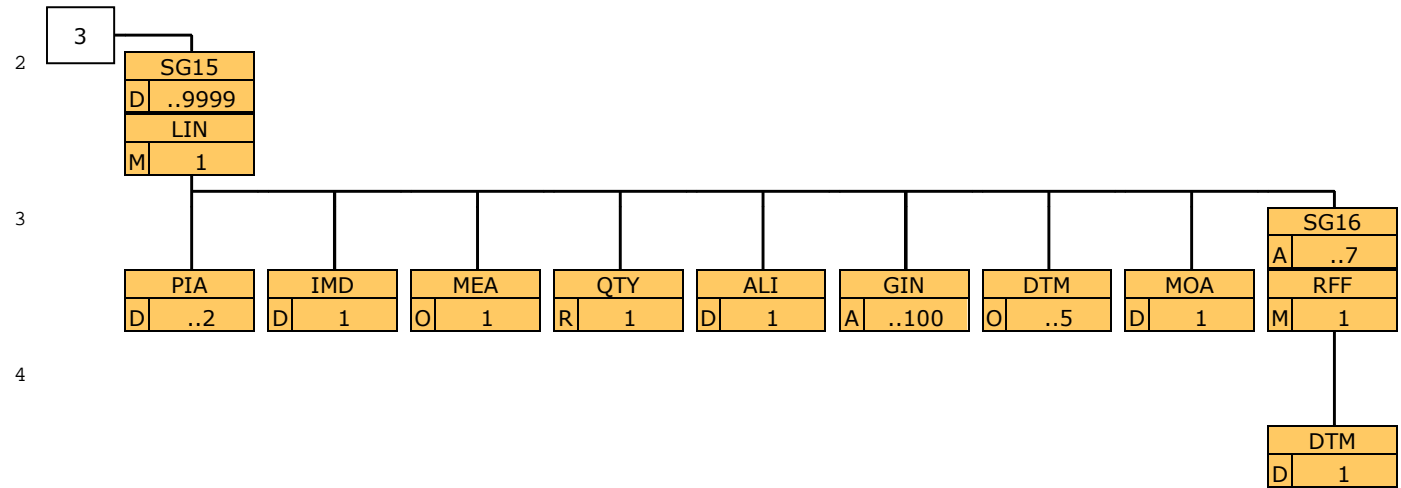
MESSAGE STRUCTURE CHART

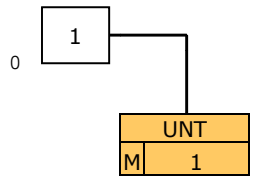
UNH	MESSAGE HEADER	M 1
BGM	BEGINNING OF MESSAGE	M 1
DTM	DATE/TIME/PERIOD	R..3
MEA	MEASUREMENTS	A..4
MOA	MONETARY AMOUNT	O..5
SG1		D..10
RFF	REFERENCE	M 1
DTM	DATE/TIME/PERIOD	D 1
SG2		R..10
NAD	NAME AND ADDRESS	M 1
SG3		O..2
RFF	REFERENCE	M 1
SG4		O 1
CTA	CONTACT INFORMATION	M 1
COM	COMMUNICATION CONTACT	O..3
SG5		O 1
TOD	TERMS OF DELIVERY OR TRANSPORT	M 1
LOC	PLACE/LOCATION IDENTIFICATION	D 1
SG6		D..10
TDT	DETAILS OF TRANSPORT	M 1
SG7		O..6
LOC	PLACE/LOCATION IDENTIFICATION	M 1
DTM	DATE/TIME/PERIOD	A..2
SG8		O..10
EOD	EQUIPMENT DETAILS	M 1
SEL	SEAL NUMBER	D..3
SG10		D..9999
CPS	CONSIGNMENT PACKING SEQUENCE	M 1
SG11		A..10
PAC	PACKAGE	M 1
MEA	MEASUREMENTS	O..6
OTY	QUANTITY	R 1
SG12		D..10
HAN	HANDLING INSTRUCTIONS	M 1
SG13		A 1
PCI	PACKAGE IDENTIFICATION	M 1
RFF	REFERENCE	A 1
SG14		D 1
GIN	GOODS IDENTITY NUMBER	M 1
SG15		D..9999
LIN	LINE ITEM	M 1
PIA	ADDITIONAL PRODUCT ID	D..2
IMD	ITEM DESCRIPTION	D 1
MEA	MEASUREMENTS	O 1
OTY	QUANTITY	R 1
ALI	ADDITIONAL INFORMATION	D 1
GIN	GOODS IDENTITY NUMBER	A..100
DTM	DATE/TIME/PERIOD	O..5
MOA	MONETARY AMOUNT	D 1
SG16		A..7
RFF	REFERENCE	M 1
DTM	DATE/TIME/PERIOD	D 1
UNT	MESSAGE TRAILER	M 1

BRANCHING DIAGRAM









SEGMENT GROUPS/SEGMENTS DESCRIPTION

UNH MESSAGE HEADER

Function: A service segment heading, and uniquely identifying the message.
Usage: M1

BGM BEGINNING OF MESSAGE

Function: A segment uniquely identifying the message by means of its coded name, number and function.
Usage: M1

DTM DATE/TIME/PERIOD

Function: A segment specifying the date/time of creation of the message and, other dates relevant to the whole message.
Usage: R..3

MEA MEASUREMENTS

Function: A segment specifying weights, volume and quantity of shipment unit loads of the entire shipment.
Usage: A..4

MOA MONETARY AMOUNT

Function: A segment specifying monetary amounts for the whole despatch required by the consignee to prepare customs clearance procedures.
Usage: O..5

SG1 RFF-DTM

Function: A group of segments referencing documents and their dates/times, relating to the whole message.
Usage: D..10
Notes: Normally references are specified at the line item level. Where the information refers to the whole Despatch Advice message it must be in SG1. Where the information is not the same in every line item (LIN) it must appear in every SG16, and not here.
The DTM segment must be sent where local law requires the date of a reference document to be sent.

RFF REFERENCE

Function: A segment specifying a document reference number.
Usage: M1

DTM DATE/TIME/PERIOD

Function: A segment specifying the date/time of the reference document.
Usage: D 1

SG2 NAD-SG3-SG4

Function: A group of segments identifying the parties involved and their associated information, relevant to the whole message.
Usage: R..10
Notes: The address of the buyer (BY) and seller (SE) must be present. If the goods are being delivered by, or to a different party then they are represented as the consignor (CZ) and the consignee (CN), and the respective NAD segments must be present.

It is also possible that the address from which the shipment is actually made, or delivered to, is different to the address of the SE/CZ or the BY/CN. In this case NAD segments must be present for the 'ship from' (SF) and 'ship to' (DP) codes.

Where possible, only the coded form of the party id. should be specified, e.g. the buyer and seller are known to each other, thus only the coded id. is required. The consignee or delivery address may vary and would have to be clearly specified, preferably in the structured format.

NAD NAME AND ADDRESS

Function: A segment identifying the function and coded identification, name and address of a party involved.

Usage: M1

SG3 RFF

Function: A group of segments giving references relating to the identified party.
Usage: O..2
Notes:

RFF REFERENCE

Function: A segment specifying a company specific reference.
Usage: M1

SG4 CTA-COM

Function: A group of segments giving contact details of the specific person or department within the identified party involved, to whom communication should be directed.
Usage: O1
Notes: The use of this segment group is strongly discouraged. Whilst realising the questionable value of exchanging such information it is accepted that some members may have agreed to do this in their trading partner agreements and may wish to continue this practice.

CTA CONTACT INFORMATION

Function: A segment identifying a person or department, and their function.
Usage: M1

COM COMMUNICATION CONTACT

Function: A segment identifying a communications type and number.
Usage: O..3

SG5 TOD-LOC

Function: A group of segments specifying the terms of delivery for the whole message.
Usage: O1
Notes: To be used only if it is necessary to confirm the terms of delivery and the relevant location points, or to indicate a change in the method of payment for the transport charges.
The LOC segment is only used if the terms of delivery ('F' & 'C') require a named location/place.

TOD TERMS OF DELIVERY OR TRANSPORT

Function: A segment specifying the transport charge method and applicable term of delivery.
Usage: M1

LOC PLACE/LOCATION IDENTIFICATION

Function: A segment identifying a location or place required for the terms of delivery.
Usage: D1

SG6 TDT-SG7

Function: A group of segments specifying transport details.
Usage: D..10
Notes: The segment group must be used if the shipment has occurred i.e. if the code used in the BGM DE 1001 is '351'. If the code used in DE 1001 is '345' (ready for despatch) then this is an optional segment group. The segment group will be repeated for specifying the mode of transportation for successive stages e.g. road, air.
When required, carrier identification and name may be given in TDT CO C040.

TDT DETAILS OF TRANSPORT

Function: A segment specifying the stage and mode of transport, the identification of the means of transport, and if necessary the carrier information.
Usage: M1

SG7 LOC-DTM

Function: A group of segments specifying the location information applying to the transportation.
Usage: O..6
Notes:

LOC PLACE/LOCATION IDENTIFICATION

Function: A segment identifying the location.
Usage: M1

DTM DATE/TIME/PERIOD

Function: A segment specifying the date/time of departure and/or arrival of the transported goods for the specified location.
Usage: A..2

SG8 EQD-SEL

Function: A group of segments specifying the material handling equipment used for the transportation of goods in the whole despatch.
Usage: O..10
Notes: In general material handling equipment is always supplied by the haulier/carrier.

EQD EQUIPMENT DETAILS

Function: A segment identifying a unit of equipment.
Usage: M1

SEL SEAL NUMBER

Function: A segment specifying a seal number and party responsible, for the identified unit of equipment.
Usage: D..3

SG10 CPS-SG11-SG15

Function: A group of segments providing details of all package levels and of the individual despatched items contained in the shipment. This segment group provides the capability to give the hierarchical packing relationship. The group defines a logical top-down order structure. The lowest level package information of the hierarchy is followed by the detail part information.

Usage: D..9999

Notes: Business practices can describe the contents of a despatch advice according to two main logics:

- The PACKAGE driven logic:

The despatch advice is described package by package, according to the physical structure of the packaging hierarchy, starting from the outer packages ending with the inner packages. The contained items are identified at the lowest level of the packaging structure. There is a one to one relationship between the CPS and PAC segments.

- The PRODUCT driven logic:

The despatch advice is described per product, all the packages containing one item being described, identified and associated to the corresponding item. There must be a one to one relationship between CPS and LIN segments.

It is recommended that users of this guide adopt the PACKAGE driven logic. See the EXAMPLE section of the guide on how to use this segment group.

SG12 is always used when the package contains hazardous materials, and in other cases as appropriate.

Package identification numbers will be placed in the GIN segment in SG14.

The usage of SG15 within the CPS segment group is dependent on the level of packaging being described. If describing packages that contain lower level packages, then this group of segments would be omitted until the lowest level package was being described.

This segment group is not required when a cancellation is sent.

CPS CONSIGNMENT PACKING SEQUENCE

Function:
Usage: M1

SG11 PAC-MEA-QTY-SG12-SG13

Function: A group of segments identifying packaging with associated information.
Usage: A..10
Notes: Use of this segment group is dependent on the trading partners agreement to describe the consignment by the packaging levels. While it is not mandatory to describe the hierarchical structure of the shipment, for a number of reasons (customs, insurance, etc.), it is advised to specify at least each unit delivered.

PAC PACKAGE

Function: A segment specifying the number and type of identical packages for given items, or of identical handling units of the despatch.
Usage: M1

MEA MEASUREMENTS

Function: A segment specifying physical measurements, volumes and weights.
Usage: O..6

QTY QUANTITY

Function: A segment specifying the quantity of packages contained within the package being described.
Usage: R 1

SG12 HAN

Function: A group of segments providing information for special handling requirements, including hazardous goods.
Usage: D..10
Notes: This segment group is always used when the package contains hazardous materials, and in other cases as appropriate.

HAN HANDLING INSTRUCTIONS

Function: A segment specifying package handling and giving notification of hazardous material.
Usage: M1

SG13 PCI-RFF-SG14

Function: A group of segments specifying packaging identification numbers and associated reference document numbers.
Usage: A 1
Notes: If barcode labelling is used on the packaging it is recommended that the packaging identification be one of the items barcoded.

When a unique package identification (licence plate) exists, it is sent in the GIN segment (SG14).

The usage of SG14 is dependent on the existence of a package identification (licence plate) on the package.

PCI PACKAGE IDENTIFICATION

Function: A segment indicating whether package markings are from the buyer or the seller.
Usage: M1

RFF REFERENCE

Function: A segment specifying an identifying number associated with the package.
Usage: A 1

SG14 GIN

Function: A group of segments providing the identity number of a package being despatched.
Usage: D 1

Notes: The usage of this segment group is dependent on the existence of a package identification (licence plate) on the package.

GIN GOODS IDENTITY NUMBER

Function: A segment giving the unique identification number of the package.
Usage: M1

SG15 LIN-PIA-IMD-MEA-QTY-ALI-GIN-DTM-MOA-SG16

Function: A group of segments providing details of the line items i.e. individual despatched items within the packages described.

Usage: D..9999

Notes: The usage of this group within the CPS segment group is dependent on the level of packaging being described. If describing packages that contain lower level packages, then this group of segments would be omitted until the lowest level package was being described.

This segment loop is required at least once for the lowest level of packaging.

The seller/shipper should only need to indicate in the Despatch Advice message the same item identification as was given in the Purchase Order message. This item identification should be placed in the LIN segment.

The PIA segment is dependent on whether the primary reference to the item being ordered is insufficient to identify the item.

Item identifications should be used wherever possible. In a situation where no item identification can be given then a coded, or free text description may be given in the IMD segment.

Physical representation of the data in the LIN segment can be handled by barcoded product and package labels.

The ALI segment is dependent on legal requirements.

The MOA segment is used if required by the consignee to undertake customs clearance procedures.

Examples of use are:

1. Item as identified by the buyer's product id. number.

```
LIN+1++12345-12:IN::92'
```

2. Item as identified by the seller's product id. number with an additional drawing revision number as assigned by the seller.

```
LIN+1++ABCDE-AA:SA::91'  
PIA+1+ABCDE-AA-1:DR::91'
```

3. Item as identified by the seller's product id. number with the addition of the buyer's reference number for this product.

```
LIN+1++ABCDE-AA:SA::91'  
PIA+1+12345-12:IN::92'
```

4. Item as identified by the seller's product number with the addition of the seller's substitute number for this product, and also the buyer's own product and substitute numbers for

```
LIN+1++ABCDE-AA:SA::91'  
PIA+4+ABCDE-AB:SA::91+12345-15:IN::92'  
PIA+1+12345-12:IN::92'
```

5. Where no item number is given and only a description of the item is passed in the message.

```
LIN+1'  
IMD++++::SUPER XYZ MODULES'
```

LIN LINE ITEM

Function: A segment specifying a line item by its item number, and agreed to be the primary reference number between the buyer and seller.
The segment also carries a sequence number assigned to the line item within the message.

Usage: M1

PIA ADDITIONAL PRODUCT ID

Function: A segment providing additional or substitute identification numbers for the line item.

Usage: D..2

IMD ITEM DESCRIPTION

Function: A segment specifying ship to stock or ship to line quality and/or an additional description in clear or coded form, for the line item.

Usage: D 1

MEA MEASUREMENTS

Function: A segment specifying the line item net weight.

Usage: O 1

QTY QUANTITY

Function: A segment indicating the despatch quantity for the line item.

Usage: R 1

ALI ADDITIONAL INFORMATION

Function: A segment indicating the country of origin of the line item and the type of duty regime for customs purposes.

Usage: D 1

GIN GOODS IDENTITY NUMBER

Function: A segment specifying a range of or individual identification numbers of the line item.

Usage: A..100

DTM DATE/TIME/PERIOD

Function: A segment specifying the date/time information related to the line item.

Usage: O..5

MOA MONETARY AMOUNT

Function: A segment specifying a monetary amount for the line item.

Usage: D 1

SG16 RFF-DTM

Function: A group of segments specifying identifying numbers and dates/times of previous documents associated with the line item.

Usage: A..7

Notes: References are normally used at this level.

The DTM segment must be sent where local law requires the date of a reference document to be sent.

RFF REFERENCE

Function: A segment specifying an identifying number.

Usage: M 1

DTM DATE/TIME/PERIOD

Function: A segment indicating the date/time of the identifying number.

Usage: D 1

UNT MESSAGE TRAILER

Function: A service segment ending, and providing information for checking the completeness of a message.

Usage: M1

SEGMENT DETAILS

UNH

UNH MESSAGE HEADER

Function: A service segment heading, and uniquely identifying the message.

Usage : M1

Notes : Refer to EDIFICE Utilisation of the UN/EDIFACT Service Segments, Issue EDSS04

Ref.	Rep.	Name		EDIFICE Utilisation
0062	an..14	M MESSAGE REFERENCE NUMBER	M	Transmission message count from 1
S009		M MESSAGE IDENTIFIER	M	
0065	an..6	M Message type identifier	M	DESADV = Despatch advice message
0052	an..3	M Message type version number	M	D = Draft version/UN/EDIFACT Directory
0054	an..3	M Message type release number	M	97A = Release 1997 - A
0051	an..2	M Controlling agency	M	UN = UN/CEFACT
0057	an..6	C Association assigned code	R	EDDS06 = Despatch advice Issue EDDS06
0068	an..35	C COMMON ACCESS REFERENCE	N	
S010		C STATUS OF THE TRANSFER	N	
0070	n..2	M Sequence message transfer number	N	
0073	a1	C First/last sequence message transfer indication	N	

BGM BEGINNING OF MESSAGE

Function: A segment uniquely identifying the message by means of its coded name, number and function.

Usage : M1

Notes : The message number is the same as the shipment number.

Cancellation:

When DE 1225 contains '1' then only the BGM, the following DTM and the NAD segments need to be sent in the message.

The document number used in DE 1004 must be the same as in the original message.

Replace:

When DE 1225 contains '5' it has the effect of cancelling the original message and replacing it with this, so the entire message must be sent. The document number used in DE 1004 must be the same as in the original message.

Ref.	Rep.	Name	EDIFICE Utilisation	
C002		C DOCUMENT/MESSAGE NAME	R	
1001	an..3	C Document/message name, coded	R	345 = Ready for despatch advice Used in business scenarios where the seller/shipper indicates to the buyer that the goods are ready to be collected i.e. EXWORKS trade terms. 351 = Despatch advice 35R = Returns (*) (*) EDIFICE code
1131	an..3	C Code list qualifier	N	
3055	an..3	C Code list responsible agency, coded	N	
1000	an..35	C Document/message name	N	
C106		C DOCUMENT/MESSAGE IDENTIFICATION	R	
1004	an..35	C Document/message number	R	The recommendation is that the shipment number be used to uniquely identify the despatch advice. The shipment number is a unique number, created by the supplying company, which will be used to identify the shipment from the supplier through to the receiving location's receipt validation step.
1056	an..9	C Version	N	
1060	an..6	C Revision number	N	
1225	an..3	C MESSAGE FUNCTION, CODED	R	1 = Cancellation 5 = Replace 9 = Original
4343	an..3	C RESPONSE TYPE, CODED	N	

DTM DATE/TIME/PERIOD

Function: A segment specifying the date/time of creation of the message and, other dates relevant to the whole message.

Usage : R..3

Notes : All dates and times are local dates and times to the place of activity being described. It is required to specify the date of issue of the message.

Ref.	Rep.	Name		EDIFICE Utilisation
C507		M DATE/TIME/PERIOD	M	
2005	an..3	M Date/time/period qualifier	M	<p>137 = Document/message date/time Date when the document is created</p> <p>Please ensure that codes selected for use are compatible with the coded message type within DE 1001 in the BGM segment. The following codes can be used with value '351' and '35R' in DE 1001:</p> <p>11 = Despatch date and or time 17 = Delivery date/time, estimated 132 = Arrival date/time, estimated 133 = Departure date/time, estimated</p> <p>The following code should be used with value '345' in DE 1001:</p> <p>200 = Pick-up/collection date/time of cargo Used by the seller to indicate to the buyer when the goods can be collected from the seller's premises.</p>
2380	an..35	C Date/time/period	R	
2379	an..3	C Date/time/period format qualifier	R	<p>102 = CCYMMDD 203 = CCYMMDDHHMM 303 = CCYMMDDHHMMZZZ ZZZ = Time zone 304 = CCYMMDDHHMMSSZZZ ZZZ = Time zone X03 = CCYMMDDHHMMZZZZ (*) ZZZZ = Time zone X04 = CCYMMDDHHMMSSZZZZ (*) ZZZZ = Time zone (*) EDIFICE code</p>

MEA MEASUREMENTS

Function: A segment specifying weights, volume and quantity of shipment unit loads of the entire shipment.

Usage : A ..4

Notes :

Ref.	Rep.	Name		EDIFICE Utilisation
6311	an..3	M MEASUREMENT PURPOSE QUALIFIER	M	CT = Counts VOL = Volume WT = Weights
C502		C MEASUREMENT DETAILS	R	
6313	an..3	C Property measured, coded	R	AAC = Total net weight AAD = Total gross weight AAW = Gross volume SQ = Shipped quantity
6321	an..3	C Measurement significance, coded	N	
6155	an..17	C Measurement attribute identification	N	
6154	an..70	C Measurement attribute	N	
C174		C VALUE/RANGE	R	
6411	an..3	M Measure unit qualifier	M	Use the following codes from UN/ECE Recommendation no.20, Codes for Units of Measurement: CMQ = cubic centimetre KGM = kilogram LBR = pound MTQ = cubic metre NMP = number of packs
6314	an..18	C Measurement value	R	
6162	n..18	C Range minimum	N	
6152	n..18	C Range maximum	N	
6432	n..2	C Significant digits	N	
7383	an..3	C SURFACE/LAYER INDICATOR, CODED	N	

MOA MONETARY AMOUNT

Function: A segment specifying monetary amounts for the whole despatch required by the consignee to prepare customs clearance procedures.

Usage : O..5

Notes :

Ref.	Rep.	Name		EDIFICE Utilisation
C516		M MONETARY AMOUNT	M	
5025	an..3	M Monetary amount type qualifier	M	39 = Invoice total amount 43 = Declared total Customs value 49 = Development necessary for production of imported goods (Customs) 68 = Insurance and transport charges (Customs) 81 = Loading and handling cost 107 = Packing cost (Customs) 127 = Tools used in production of imported goods (Customs) 157 = Insurance value
5004	n..18	C Monetary amount	R	
6345	an..3	C Currency, coded	R	Use ISO 4217, 3 alpha code
6343	an..3	C Currency qualifier	N	
4405	an..3	C Status, coded	N	

SG1 RFF-DTM**RFF REFERENCE**

Function: A segment specifying a document reference number.

Usage : M1

Notes :

Ref.	Rep.	Name		EDIFICE Utilisation
C506		M REFERENCE	M	
1153	an..3	M Reference qualifier	M	AAN = Delivery schedule number AEE = Eur 1 certificate number AWB = Air waybill number BM = Bill of lading number CMR = Road consignment note number CT = Contract number GSP = Certificate of origin form GSP (*) HWB = House waybill number IP = Import licence number IV = Invoice number LC = Letter of credit number MWB = Master air waybill number ON = Order number (purchase) PK = Packing list number UCN = Unique consignment reference number SRN = Shipment reference number VN = Order number (vendor)
1154	an..35	C Reference number	R	
1156	an..6	C Line number	N	
4000	an..35	C Reference version number	N	

(*) EDIFICE code

SG1 RFF-DTM

DTM DATE/TIME/PERIOD

Function: A segment specifying the date/time of the reference document.

Usage : D 1

Notes : All dates and times are local.

Ref.	Rep.	Name	EDIFICE Utilisation
C507		M DATE/TIME/PERIOD	M
2005	an..3	M Date/time/period qualifier	M 171 = Reference date/time
2380	an..35	C Date/time/period	R
2379	an..3	C Date/time/period format qualifier	R
			102 = CCYYMMDD
			203 = CCYYMMDDHHMM
			303 = CCYYMMDDHHMMZZZ
			ZZZ = Time zone
			304 = CCYYMMDDHHMMSSZZZ
			ZZZ = Time zone
			X03 = CCYYMMDDHHMMZZZZZ (*)
			ZZZZZ = Time zone
			X04 = CCYYMMDDHHMMSSZZZZZ (*)
			ZZZZZ = Time zone
			(*) EDIFICE code

SG2 NAD-SG3-SG4

NAD NAME AND ADDRESS

Function: A segment identifying the function and coded identification, name and address of a party involved.

Usage : M1

Notes : It is advised that the party identification CO C082 be used. When CO C082 cannot be used it is recommended to use the structured name and address CO C080 through DE 3207 rather than the unstructured one CO C058.

Ref.	Rep.	Name		EDIFICE Utilisation
3035	an..3	M PARTY QUALIFIER	M	AA = Party to be billed (AAR Accounting rule 11) AK = Acknowledgement recipient BS = Bill and ship to BY = Buyer CN = Consignee CZ = Consignor DP = Delivery party This is the 'ship to' address FW = Freight forwarder NI = Notify party SE = Seller SF = Ship from
C082		C PARTY IDENTIFICATION DETAILS	A	
3039	an..35	M Party id. identification	M	Code identifying the party
1131	an..3	C Code list qualifier	N	
3055	an..3	C Code list responsible agency, coded	R	9 = EAN (International Article Numbering association) 16 = DUNS (Dun & Bradstreet) 91 = Assigned by seller or seller's agent 92 = Assigned by buyer or buyer's agent
C058		C NAME AND ADDRESS	D	
3124	an..35	M Name and address line	M	
3124	an..35	C Name and address line	O	
3124	an..35	C Name and address line	O	
3124	an..35	C Name and address line	O	
3124	an..35	C Name and address line	O	
C080		C PARTY NAME	D	
3036	an..35	M Party name	M	
3036	an..35	C Party name	O	
3036	an..35	C Party name	O	
3036	an..35	C Party name	O	
3036	an..35	C Party name	O	
3045	an..3	C Party name format, coded	N	
C059		C STREET	D	
3042	an..35	M Street and number/p.o. box	M	
3042	an..35	C Street and number/p.o. box	O	
3042	an..35	C Street and number/p.o. box	O	
3042	an..35	C Street and number/p.o. box	O	
3164	an..35	C CITY NAME	D	
3229	an..9	C COUNTRY SUB-ENTITY IDENTIFICATION	D	
3251	an..9	C POSTCODE IDENTIFICATION	D	
3207	an..3	C COUNTRY, CODED	D	Use ISO 3166, 2 alpha code

SG3 RFF**RFF REFERENCE**

Function: A segment specifying a company specific reference.

Usage : M1

Notes :

Ref.	Rep.	Name		EDIFICE Utilisation
C506		M REFERENCE	M	GN = Government reference number VA = VAT registration number
1153	an..3	M Reference qualifier	M	
1154	an..35	C Reference number	R	
1156	an..6	C Line number	N	
4000	an..35	C Reference version number	N	

SG4 CTA-COM**CTA CONTACT INFORMATION**

Function: A segment identifying a person or department, and their function.

Usage : M1

Notes :

Ref.	Rep.	Name		EDIFICE Utilisation
3139	an..3	C CONTACT FUNCTION, CODED	R	IC = Information contact If a code is available use DE 3413, otherwise use DE 3412.
C056		C DEPARTMENT OR EMPLOYEE DETAILS	R	
3413	an..17	C Department or employee identification	D	
3412	an..35	C Department or employee	D	

SG4 CTA-COM

COM COMMUNICATION CONTACT

Function: A segment identifying a communications type and number.

Usage : 0..3

Notes :

Ref.	Rep.	Name		EDIFICE Utilisation
C076		M COMMUNICATION CONTACT	M	
3148	an..512	M Communication number	M	
3155	an..3	M Communication channel qualifier	M	EM = Electronic mail FX = Telefax TE = Telephone

SG5 TOD-LOC

TOD TERMS OF DELIVERY OR TRANSPORT

Function: A segment specifying the transport charge method and applicable term of delivery.

Usage : M1

Notes :

Ref.	Rep.	Name		EDIFICE Utilisation
4055	an..3	C TERMS OF DELIVERY OR TRANSPORT FUNCTION, CODED	A	6 = Delivery condition
4215	an..3	C TRANSPORT CHARGES METHOD OF PAYMENT, CODED	O	CC = Collect A shipment on which freight charges will be paid by consignee PP = Prepaid (by seller)
C100		C TERMS OF DELIVERY OR TRANSPORT	R	
4053	an..3	C Terms of delivery or transport, coded	R	Use UN/ECE Recommendation no.5, Incoterms 1990 (see next table). Incoterms code list: Group E - Departure EXW = Ex works Group F - Main carriage unpaid FAS = Free alongside ship FCA = Free carrier FOB = Free on Board Group C - Main carriage paid CFR = Cost and freight CIF = Cost, insurance and freight CIP = Carriage and insurance paid to CPT = Carriage paid to Group D - Arrival DAF = Delivered at frontier DDP = Delivered duty paid DDU = Delivered duty unpaid DEQ = Delivered ex quay DES = Delivered ex ship If not applicable, use code from another appropriate code set in DE 4053 in combination with DE 1131/3055.
1131	an..3	C Code list qualifier	D	
3055	an..3	C Code list responsible agency, coded	D	
4052	an..70	C Terms of delivery or transport	N	
4052	an..70	C Terms of delivery or transport	N	

SG5 TOD-LOC

LOC PLACE/LOCATION IDENTIFICATION

Function: A segment identifying a location or place required for the terms of delivery.

Usage : D 1

Notes :

Ref.	Rep.	Name		EDIFICE Utilisation
3227	an..3	M PLACE/LOCATION QUALIFIER	M	1 = Place of terms of delivery Use UN/ECE Recommendation no.16, UNLOCODE. If not applicable, use codes from another appropriate code set in combination with DE 1131/3055. Examples of codes are: 3 = IATA (International Air Transport Association) 91 = Assigned by seller or seller's agent 92 = Assigned by buyer or buyer's agent
C517		C LOCATION IDENTIFICATION	R	
3225	an..25	C Place/location identification	R	
1131	an..3	C Code list qualifier	D	
3055	an..3	C Code list responsible agency, coded	D	
3224	an..70	C Place/location	N	
C519		C RELATED LOCATION ONE IDENTIFICATION	N	
3223	an..25	C Related place/location one identification	N	
1131	an..3	C Code list qualifier	N	
3055	an..3	C Code list responsible agency, coded	N	
3222	an..70	C Related place/location one	N	
C553		C RELATED LOCATION TWO IDENTIFICATION	N	
3233	an..25	C Related place/location two identification	N	
1131	an..3	C Code list qualifier	N	
3055	an..3	C Code list responsible agency, coded	N	
3232	an..70	C Related place/location two	N	
5479	an..3	C RELATION, CODED	N	

SG6 TDT-SG7

TDT DETAILS OF TRANSPORT

Function: A segment specifying the stage and mode of transport, the identification of the means of transport, and if necessary the carrier information.

Usage : M1

Notes : DE 8028 may be used to reference a current transport stage as identified in DE 8051, if this information is already known e.g. flight number.
Identification such as vehicle licence plate number may be provided in CO C222
DE 8212.

Ref.	Rep.	Name		EDIFICE Utilisation
8051	an..3	M TRANSPORT STAGE QUALIFIER	M	10 = Pre-carriage transport 12 = At departure 13 = At destination 20 = Main-carriage transport 30 = On-carriage transport
8028	an..17	C CONVEYANCE REFERENCE NUMBER	A	Used for flight or voyage number.
C220		C MODE OF TRANSPORT	R	
8067	an..3	C Mode of transport, coded	R	Use the following codes from UN/ECE Recommendation no.19: 1 = Maritime transport 2 = Rail transport 3 = Road transport 4 = Air transport 5 = Mail 6 = Multimodal transport
8066	an..17	C Mode of transport	N	
C228		C TRANSPORT MEANS	N	
8179	an..8	C Type of means of transport identification	N	
8178	an..17	C Type of means of transport	N	
C040		C CARRIER	A	
3127	an..17	C Carrier identification	A	Mutually defined code
1131	an..3	C Code list qualifier	N	
3055	an..3	C Code list responsible agency, coded	A	3 = IATA (International Air Transport Association) 9 = EAN (International Article Numbering association) 11 = Lloyd's register of shipping 16 = DUNS (Dun & Bradstreet) 91 = Assigned by seller or seller's agent 92 = Assigned by buyer or buyer's agent 166 = US, National Motor Freight Classification Association
3128	an..35	C Carrier name	D	Used if no coded name exchanged in DE 3127
8101	an..3	C TRANSIT DIRECTION, CODED	N	
C401		C EXCESS TRANSPORTATION INFORMATION	N	
8457	an..3	M Excess transportation reason, coded	N	
8459	an..3	M Excess transportation responsibility, coded	N	
7130	an..17	C Customer authorization number	N	
C222		C TRANSPORT IDENTIFICATION	A	
8213	an..9	C Id. of means of transport identification	N	
1131	an..3	C Code list qualifier	N	
3055	an..3	C Code list responsible agency, coded	N	
8212	an..35	C Id. of the means of transport	R	Vessel name or vehicle licence number
8453	an..3	C Nationality of means of transport, coded	O	Use ISO 3166, 2 alpha code
8281	an..3	C TRANSPORT OWNERSHIP, CODED	N	

SG7 LOC-DTM

LOC PLACE/LOCATION IDENTIFICATION

Function: A segment identifying the location.

Usage : M1

Notes :

Ref.	Rep.	Name	EDIFICE Utilisation	
3227	an..3	M PLACE/LOCATION QUALIFIER	M	5 = Place of departure 7 = Place of delivery 8 = Place of destination 13 = Place of transhipment 15 = Place of transfer responsibility 24 = Port of entry
C517		C LOCATION IDENTIFICATION	R	
3225	an..25	C Place/location identification	R	Use UN/ECE Recommendation no.16: UNLOCODE. If not applicable, use codes from another appropriate code set in combination with DE 1131/3055.
1131	an..3	C Code list qualifier	D	
3055	an..3	C Code list responsible agency, coded	D	Examples of codes are: 3 = IATA (International Air Transport Association) 91 = Assigned by seller or seller's agent 92 = Assigned by buyer or buyer's agent
3224	an..70	C Place/location	N	
C519		C RELATED LOCATION ONE IDENTIFICATION	N	
3223	an..25	C Related place/location one identification	N	
1131	an..3	C Code list qualifier	N	
3055	an..3	C Code list responsible agency, coded	N	
3222	an..70	C Related place/location one	N	
C553		C RELATED LOCATION TWO IDENTIFICATION	N	
3233	an..25	C Related place/location two identification	N	
1131	an..3	C Code list qualifier	N	
3055	an..3	C Code list responsible agency, coded	N	
3232	an..70	C Related place/location two	N	
5479	an..3	C RELATION, CODED	N	

SG7 LOC-DTM

DTM DATE/TIME/PERIOD

Function: A segment specifying the date/time of departure and/or arrival of the transported goods for the specified location.

Usage : A ..2

Notes : All dates and times are local to the place of the activity being described.

Ref.	Rep.	Name		EDIFICE Utilisation
C507		M DATE/TIME/PERIOD	M	
2005	an..3	M Date/time/period qualifier	M	11 = Despatch date and or time 17 = Delivery date/time, estimated 132 = Arrival date/time, estimated Date/time when carrier estimates when a means of transport should arrive at port of discharge or place of destination. 133 = Departure date/time, estimated Date/time when a carrier estimates that a means of transport should depart at the place of departure. 200 = Pick-up/collection date/time of cargo
2380	an..35	C Date/time/period	R	
2379	an..3	C Date/time/period format qualifier	R	102 = CCYYMMDD 203 = CCYYMMDDHHMM 303 = CCYYMMDDHHMMZZZ ZZZ = Time zone 304 = CCYYMMDDHHMMSSZZZ ZZZ = Time zone X03 = CCYYMMDDHHMMZZZZZ (*) ZZZZZ = Time zone X04 = CCYYMMDDHHMMSSZZZZZ (*) ZZZZZ = Time zone (*) EDIFICE code

SG8 EQD-SEL

EQD EQUIPMENT DETAILS

Function: A segment identifying a unit of equipment.
 Usage : M1
 Notes :

Ref.	Rep.	Name		EDIFICE Utilisation
8053	an..3	M EQUIPMENT QUALIFIER	M	BPN = Box pallet non exchangeable CN = Container EFP = Exchangeable EUR flat pallet PA = Pallet TE = Trailer UL = ULD (Unit load device) See UN/EDIFACT code list
C237		C EQUIPMENT IDENTIFICATION	A	
8260	an..17	C Equipment identification number	R	
1131	an..3	C Code list qualifier	N	
3055	an..3	C Code list responsible agency, coded	N	
3207	an..3	C Country, coded	N	
C224		C EQUIPMENT SIZE AND TYPE	O	
8155	an..10	C Equipment size and type identification	R	
1131	an..3	C Code list qualifier	N	
3055	an..3	C Code list responsible agency, coded	N	
8154	an..35	C Equipment size and type	N	
8077	an..3	C EQUIPMENT SUPPLIER, CODED	N	
8249	an..3	C EQUIPMENT STATUS, CODED	N	
8169	an..3	C FULL/EMPTY INDICATOR, CODED	N	

SG8 EQD-SEL**SEL SEAL NUMBER**

Function: A segment specifying a seal number and party responsible, for the identified unit of equipment.

Usage : D..3

Notes : This segment should be used if a seal has been placed on the equipment.

Ref.	Rep.	Name		EDIFICE Utilisation
9308	an..10	M SEAL NUMBER	M	CA = Carrier CU = Customs SH = Shipper
C215		C SEAL ISSUER	O	
9303	an..3	C Sealing party, coded	R	
1131	an..3	C Code list qualifier	N	
3055	an..3	C Code list responsible agency, coded	N	
9302	an..35	C Sealing party	N	
4517	an..3	C SEAL CONDITION, CODED	N	

SG10 CPS-SG11-SG15**CPS CONSIGNMENT PACKING SEQUENCE**

Function:

Usage : M1

Notes : DE 7166 is dependent on the usage of more than one packaging level, i.e. it will not be used if only one level of packing is being described.

Ref.	Rep.	Name	EDIFICE Utilisation	
7164	an..12	M HIERARCHICAL ID. NUMBER	M	Sequential numbering is recommended. The number remains unique within the message.
7166	an..12	C HIERARCHICAL PARENT ID.	D	Identifies the hierarchical link between packaging levels by containing the hierarchical Id (DE 7164) of the package at the higher level (its parent).
7075	an..3	C PACKAGING LEVEL, CODED	N	

SG11 PAC-MEA-QTY-SG12-SG13
PAC PACKAGE

Function: A segment specifying the number and type of identical packages for given items, or of identical handling units of the despatch.

Usage : M1

Notes :

Ref.	Rep.	Name		EDIFICE Utilisation
7224	n..8	C NUMBER OF PACKAGES	R	
C531		C PACKAGING DETAILS	N	
7075	an..3	C Packaging level, coded	N	
7233	an..3	C Packaging related information, coded	N	
7073	an..3	C Packaging terms and conditions, coded	N	
C202		C PACKAGE TYPE	R	
7065	an..17	C Type of packages identification	R	The following codes are taken from the UN/ECE Recommendation no.21, (TDED 5.8). If not applicable, use codes from another appropriate code set in combination with DE 1131/3055. BA = Barrel BE = Bundle BG = Bag BX = Box CG = Cage CN = Container (*) CR = Crate CS = Case CT = Carton DR = Drum EN = Envelope NE = Unpacked or unpackaged PC = Parcel PE = Pallet (*) PK = Package RL = Reel RO = Roll SW = Shrinkwrapped TU = Tube (*) EDIFICE code, not included in UN/ECE Recommendation No. 21
1131	an..3	C Code list qualifier	D	
3055	an..3	C Code list responsible agency, coded	D	
7064	an..35	C Type of packages	N	
C402		C PACKAGE TYPE IDENTIFICATION	N	
7077	an..3	M Item description type, coded	N	
7064	an..35	M Type of packages	N	
7143	an..3	C Item number type, coded	N	
7064	an..35	C Type of packages	N	
7143	an..3	C Item number type, coded	N	
C532		C RETURNABLE PACKAGE DETAILS	N	
8395	an..3	C Returnable package freight payment responsibility, coded	N	
8393	an..3	C Returnable package load contents, coded	N	

SG11 PAC-MEA-QTY-SG12-SG13
MEA MEASUREMENTS

Function: A segment specifying physical measurements, volumes and weights.

Usage : O..6

Notes :

Ref.	Rep.	Name		EDIFICE Utilisation
6311	an..3	M MEASUREMENT PURPOSE QUALIFIER	M	PD = Physical dimensions (product ordered) Physical attributes of product in consignment. VOL = Volume WT = Weights
C502		C MEASUREMENT DETAILS	R	
6313	an..3	C Property measured, coded	R	AAW = Gross volume HT = Height dimension LN = Length dimension WD = Width dimension G = Gross weight N = Actual net weight To be specified for the outer package.
6321	an..3	C Measurement significance, coded	N	
6155	an..17	C Measurement attribute identification	N	
6154	an..70	C Measurement attribute	N	
C174		C VALUE/RANGE	R	
6411	an..3	M Measure unit qualifier	M	CMQ = cubic centimetre KGM = kilogram MTQ = cubic metre MTR = metre LBR = pound
6314	an..18	C Measurement value	R	
6162	n..18	C Range minimum	N	
6152	n..18	C Range maximum	N	
6432	n..2	C Significant digits	N	
7383	an..3	C SURFACE/LAYER INDICATOR, CODED	N	

SG11 PAC-MEA-QTY-SG12-SG13**QTY QUANTITY**

Function: A segment specifying the quantity of packages contained within the package being described.

Usage : R 1

Notes :

Ref.	Rep.	Name		EDIFICE Utilisation
C186		M QUANTITY DETAILS	M	
6063	an..3	M Quantity qualifier	M	52 = Quantity per pack
6060	n..15	M Quantity	M	
6411	an..3	C Measure unit qualifier	N	

SG12 HAN**HAN HANDLING INSTRUCTIONS**

Function: A segment specifying package handling and giving notification of hazardous material.

Usage : M1

Notes : CO C218 must always be used where this information is a legal requirement.
DE 4078 should be only used if DE 4079 cannot be used.

Ref.	Rep.	Name	EDIFICE Utilisation
C524		C HANDLING INSTRUCTIONS	R Identification of the instructions on how specified goods, packages or containers should be handled. It is advised that only coded instructions be passed in the segment. (User or association defined code.) Use the relevant industry specific code, in combination with DE 1131/3055. See also UNTDED 5.9 p.2 CIMP.
4079	an..3	C Handling instructions, coded	A
1131	an..3	C Code list qualifier	O
3055	an..3	C Code list responsible agency, coded	A See UN/EDIFACT code list
4078	an..70	C Handling instructions	D
C218		C HAZARDOUS MATERIAL	D
7419	an..4	C Hazardous material class code, identification	R Code specifying the kind of hazard for a material. (Industry or association defined code.)
1131	an..3	C Code list qualifier	O
3055	an..3	C Code list responsible agency, coded	R See UN/EDIFACT code list
7418	an..35	C Hazardous material class	N

SG13 PCI-RFF-SG14

PCI PACKAGE IDENTIFICATION

Function: A segment indicating whether package markings are from the buyer or the seller.

Usage : M1

Notes : The value entered in this segment is only used to enable access to the following segments within this segment group.

Ref.	Rep.	Name		EDIFICE Utilisation
4233	an..3	C MARKING INSTRUCTIONS, CODED	R	16 = Buyer's instructions 17 = Seller's instructions
C210		C MARKS & LABELS	N	
7102	an..35	M Shipping marks	N	
7102	an..35	C Shipping marks	N	
7102	an..35	C Shipping marks	N	
7102	an..35	C Shipping marks	N	
7102	an..35	C Shipping marks	N	
7102	an..35	C Shipping marks	N	
7102	an..35	C Shipping marks	N	
7102	an..35	C Shipping marks	N	
7102	an..35	C Shipping marks	N	
7102	an..35	C Shipping marks	N	
8275	an..3	C CONTAINER/PACKAGE STATUS, CODED	N	
C827		C TYPE OF MARKING	N	
7511	an..3	M Type of marking, coded	N	
1131	an..3	C Code list qualifier	N	
3055	an..3	C Code list responsible agency, coded	N	

SG13 PCI-RFF-SG14**RFF REFERENCE**

Function: A segment specifying an identifying number associated with the package.

Usage : A 1

Notes :

Ref.	Rep.	Name		EDIFICE Utilisation
C506		M REFERENCE	M	
1153	an..3	M Reference qualifier	M	AAN = Delivery schedule number IV = Invoice number ON = Order number (purchase) PK = Packing list number VN = Order number (vendor)
1154	an..35	C Reference number	R	
1156	an..6	C Line number	N	
4000	an..35	C Reference version number	N	

SG14 GIN**GIN GOODS IDENTITY NUMBER**

Function: A segment giving the unique identification number of the package.

Usage : M1

Notes : When using barcoding this information relates to the appropriate data identifiers that indicate Licence Plate.

Ref.	Rep.	Name	EDIFICE Utilisation	
7405	an..3	M IDENTITY NUMBER QUALIFIER	M	ML = Marking/label number VZ = Transport unit identification according to ISO/IEC 15459 WA = Indivisible transport unit according to ISO/IEC 15459 WB = Divisible transport unit according to ISO/IEC 15459
C208		M IDENTITY NUMBER RANGE	M	The first DE 7402 in the composite data element is the start of the consecutively numbered range, the second DE 7402 indicates the end of the range. If there is no range only the first DE 7402 is used. If the identity numbers are not sequential and part of a series (e.g. 1,3,10) then a separate CO C208 and DE 7402 must be used for each identity number.
7402	an..35	M Identity number	M	
7402	an..35	C Identity number	D	
C208		C IDENTITY NUMBER RANGE	O	As for first CO C208
7402	an..35	M Identity number	M	
7402	an..35	C Identity number	D	
C208		C IDENTITY NUMBER RANGE	O	As for first CO C208
7402	an..35	M Identity number	M	
7402	an..35	C Identity number	D	
C208		C IDENTITY NUMBER RANGE	O	As for first CO C208
7402	an..35	M Identity number	M	
7402	an..35	C Identity number	D	
C208		C IDENTITY NUMBER RANGE	O	As for first CO C208
7402	an..35	M Identity number	M	
7402	an..35	C Identity number	D	

SG15 LIN-PIA-IMD-MEA-QTY-ALI-GIN-DTM-MOA-SG16

LIN LINE ITEM

Function: A segment specifying a line item by its item number, and agreed to be the primary reference number between the buyer and seller.

The segment also carries a sequence number assigned to the line item within the message.

Usage : M1

Notes :

Ref.	Rep.	Name	EDIFICE Utilisation
1082	an..6	C LINE ITEM NUMBER	R This number is assigned by the sender of the message. The first line item within a message will be numbered 1 and further line items will be incremented by 1 for each new line.
1229	an..3	C ACTION REQUEST/NOTIFICATION, CODED	N
C212		C ITEM NUMBER IDENTIFICATION	A
7140	an..35	C Item number	R Primary reference
7143	an..3	C Item number type, coded	R BP = Buyer's part number DI = Distributor's part number (*) EN = International Article Numbering association (EAN) MF = Manufacturer's (producer's) article number SRV = EAN.UCC Global Trade Item Number UP = UPC (Universal product code) VP = Vendor's (seller's) part number (*) EDIFICE code
1131	an..3	C Code list qualifier	N
3055	an..3	C Code list responsible agency, coded	R 9 = EAN (International Article Numbering association) 89 = Assigned by distributor 90 = Assigned by manufacturer 91 = Assigned by seller or seller's agent 92 = Assigned by buyer or buyer's agent 113 = US, UCC (Uniform Code Council)
C829		C SUB-LINE INFORMATION	N
5495	an..3	C Sub-line indicator, coded	N
1082	an..6	C Line item number	N
1222	n..2	C CONFIGURATION LEVEL	N
7083	an..3	C CONFIGURATION, CODED	N

SG15 LIN-PIA-IMD-MEA-QTY-ALI-GIN-DTM-MOA-SG16**PIA ADDITIONAL PRODUCT ID**

Function: A segment providing additional or substitute identification numbers for the line item.

Usage : D..2

Notes : The 5 internal repetitions of CO C212 may be used, but EDIFICE recommends to only use the first occurrence.

Ref.	Rep.	Name		EDIFICE Utilisation
4347	an..3	M PRODUCT ID. FUNCTION QUALIFIER	M	1 = Additional identification 4 = Substituted for
C212		M ITEM NUMBER IDENTIFICATION	M	
7140	an..35	C Item number	R	
7143	an..3	C Item number type, coded	R	AA = Product version number Release number of a product BP = Buyer's part number CC = Industry commodity code CL = Color number DI = Distributor's part number (*) DR = Drawing revision number DW = Drawing EC = Engineering change level EN = International Article Numbering Association (EAN) GS = General specification number HS = Harmonised system Code classifying products according to the Customs Cooperation Council Nomenclature 'Harmonized System' MF = Manufacturer's (producer's) article number MN = Model number SN = Serial number SRV = EAN.UCC Global Trade Item Number UP = UPC (Universal product code) VP = Vendor's (seller's) part number (*) EDIFICE code
1131	an..3	C Code list qualifier	N	
3055	an..3	C Code list responsible agency, coded	R	9 = EAN (International Article Numbering association) 89 = Assigned by distributor 90 = Assigned by manufacturer 91 = Assigned by seller or seller's agent 92 = Assigned by buyer or buyer's agent 113 = US, UCC (Uniform Code Council)
C212		C ITEM NUMBER IDENTIFICATION	O	As for first CO C212
7140	an..35	C Item number	R	
7143	an..3	C Item number type, coded	R	
1131	an..3	C Code list qualifier	N	
3055	an..3	C Code list responsible agency, coded	O	
C212		C ITEM NUMBER IDENTIFICATION	O	As for first CO C212
7140	an..35	C Item number	R	
7143	an..3	C Item number type, coded	R	
1131	an..3	C Code list qualifier	N	
3055	an..3	C Code list responsible agency, coded	O	
C212		C ITEM NUMBER IDENTIFICATION	O	As for first CO C212
7140	an..35	C Item number	R	
7143	an..3	C Item number type, coded	R	
1131	an..3	C Code list qualifier	N	
3055	an..3	C Code list responsible agency, coded	O	
C212		C ITEM NUMBER IDENTIFICATION	O	As for first CO C212
7140	an..35	C Item number	R	
7143	an..3	C Item number type, coded	R	
1131	an..3	C Code list qualifier	N	

Ref.	Rep.	Name	EDIFICE Utilisation
3055	an..3	C Code list responsible agency, coded	O

SG15 LIN-PIA-IMD-MEA-QTY-ALI-GIN-DTM-MOA-SG16

IMD ITEM DESCRIPTION

Function: A segment specifying ship to stock or ship to line quality and/or an additional description in clear or coded form, for the line item.

Usage : D1

Notes :

Ref.	Rep.	Name		EDIFICE Utilisation
7077	an..3	C ITEM DESCRIPTION TYPE, CODED	D	C = Code (from industry code list) F = Free-form 3 = Ship to stock 26 = Ship to line D Use DE 7009 for a coded description. If no code is available use DE 7008 instead.
7081	an..3	C ITEM CHARACTERISTIC, CODED	O	
C273		C ITEM DESCRIPTION	D	
7009	an..17	C Item description identification	A	
1131	an..3	C Code list qualifier	N	
3055	an..3	C Code list responsible agency, coded	N	
7008	an..35	C Item description	D	
7008	an..35	C Item description	O	
3453	an..3	C Language, coded	N	
7383	an..3	C SURFACE/LAYER INDICATOR, CODED	N	

SG15 LIN-PIA-IMD-MEA-QTY-ALI-GIN-DTM-MOA-SG16

MEA MEASUREMENTS

Function: A segment specifying the line item net weight.

Usage : 01

Notes :

Ref.	Rep.	Name		EDIFICE Utilisation
6311	an..3	M MEASUREMENT PURPOSE QUALIFIER	M	WT = Weights AAA = Unit net weight KGM = kilogram LBR = pound
C502		C MEASUREMENT DETAILS	R	
6313	an..3	C Property measured, coded	R	
6321	an..3	C Measurement significance, coded	N	
6155	an..17	C Measurement attribute identification	N	
6154	an..70	C Measurement attribute	N	
C174		C VALUE/RANGE	R	
6411	an..3	M Measure unit qualifier	M	
6314	an..18	C Measurement value	R	
6162	n..18	C Range minimum	N	
6152	n..18	C Range maximum	N	
6432	n..2	C Significant digits	N	
7383	an..3	C SURFACE/LAYER INDICATOR, CODED	N	

SG15 LIN-PIA-IMD-MEA-QTY-ALI-GIN-DTM-MOA-SG16

QTY QUANTITY

Function: A segment indicating the despatch quantity for the line item.

Usage : R 1

Notes : DE 6411 is only used if the current product is of variable quantity.

Ref.	Rep.	Name	EDIFICE Utilisation	
C186		M QUANTITY DETAILS	M	
6063	an..3	M Quantity qualifier	M	12 = Despatch quantity
6060	n..15	M Quantity	M	
6411	an..3	C Measure unit qualifier	D	Use the following codes from UN/ECE Recommendation no.20, Codes for Units of Measurement: CLT = centilitre CMT = centimetre GRM = gram KGM = kilogram KMT = kilometre (*) LTR = litre MGM = milligram MMT = millimetre MTK = square metre MTQ = cubic metre MTR = metre PCE = piece (*) (*) EDIFICE code, not included in UN/ECE Recommendation No. 20 Other codes should be previously agreed between trading partners.

SG15 LIN-PIA-IMD-MEA-QTY-ALI-GIN-DTM-MOA-SG16**ALI ADDITIONAL INFORMATION**

Function: A segment indicating the country of origin of the line item and the type of duty regime for customs purposes.

Usage : D1

Notes : DE 4183 is used if special conditions are applicable.

Ref.	Rep.	Name		EDIFICE Utilisation
3239	an..3	C COUNTRY OF ORIGIN, CODED	A	Use ISO 3166, 2 alpha code 1 = Origin subject to EC/EFTA preference 2 = Origin subject to other preference agreement 1 = Item for national preference 6 = Subject to bonus 9 = Freely available in EEC 16 = Subject to embargo restriction 18 = Item subject to national export restrictions 20 = Item subject to import restrictions BW = Bonded warehouse (*) A warehouse where goods remain under customs control and are not cleared for import. Strategic goods indicator. Only one of the following values can apply per product. SG1 = Controlled, industrial goods, not US origin (*) Controlled according to international regulation(s) for industrial (dual-use) goods, not US origin. SG2 = Controlled, industrial goods, US origin (*) Controlled according to international regulation(s) for industrial (dual-use) goods, US origin. SG3 = Controlled by US national regulation(s) (*) SG4 = Controlled by other national regulation(s) (*) SG5 = Controlled by Australian Group for chemical or biological warfare (CBW) (*) SG6 = Controlled by missile technology control regime (MTCR) (*) SG8 = Controlled, nuclear goods (*) Controlled according to international regulation(s) for nuclear goods. SG9 = Controlled, military goods (*) Controlled according to international regulation(s) for military goods. (*) EDIFICE code
9213	an..3	C TYPE OF DUTY REGIME, CODED	O	
4183	an..3	C SPECIAL CONDITIONS, CODED	D	
4183	an..3	C SPECIAL CONDITIONS, CODED	O	As for first DE 4183
4183	an..3	C SPECIAL CONDITIONS, CODED	O	As for first DE 4183
4183	an..3	C SPECIAL CONDITIONS, CODED	O	As for first DE 4183
4183	an..3	C SPECIAL CONDITIONS, CODED	O	As for first DE 4183

SG15 LIN-PIA-IMD-MEA-QTY-ALI-GIN-DTM-MOA-SG16**GIN GOODS IDENTITY NUMBER**

Function: A segment specifying a range of or individual identification numbers of the line item.

Usage : A..100

Notes :

Ref.	Rep.	Name	EDIFICE Utilisation	
7405	an..3	M IDENTITY NUMBER QUALIFIER	M	BN = Serial number BX = Batch number
C208		M IDENTITY NUMBER RANGE	M	The first DE 7402 in the composite data element is the start of the consecutively numbered range, the second DE 7402 indicates the end of the range. If there is no range only the first DE 7402 is used. If the identity numbers are not sequential and part of a series (e.g. 1,3,10) then a separate CO C208 and DE 7402 must be used for each identity number.
7402	an..35	M Identity number	M	
7402	an..35	C Identity number	D	
C208		C IDENTITY NUMBER RANGE	O	As for first CO C208
7402	an..35	M Identity number	M	
7402	an..35	C Identity number	D	
C208		C IDENTITY NUMBER RANGE	O	As for first CO C208
7402	an..35	M Identity number	M	
7402	an..35	C Identity number	D	
C208		C IDENTITY NUMBER RANGE	O	As for first CO C208
7402	an..35	M Identity number	M	
7402	an..35	C Identity number	D	
C208		C IDENTITY NUMBER RANGE	O	As for first CO C208
7402	an..35	M Identity number	M	
7402	an..35	C Identity number	D	

SG15 LIN-PIA-IMD-MEA-QTY-ALI-GIN-DTM-MOA-SG16

DTM DATE/TIME/PERIOD

Function: A segment specifying the date/time information related to the line item.

Usage : 0..5

Notes : All dates and times are local.

Ref.	Rep.	Name		EDIFICE Utilisation
C507		M DATE/TIME/PERIOD	M	2 = Delivery date/time, requested 10 = Shipment date/time, requested 11 = Despatch date and or time 17 = Delivery date/time, estimated 132 = Arrival date/time, estimated 133 = Departure date/time, estimated 191 = Delivery date/time, expected 200 = Pick-up/collection date/time of cargo 102 = CCYMMDD 203 = CCYMMDDHHMM 303 = CCYMMDDHHMMZZZ ZZZ = Time zone 304 = CCYMMDDHHMMSSZZZ ZZZ = Time zone X03 = CCYMMDDHHMMZZZZ (*) ZZZZ = Time zone X04 = CCYMMDDHHMMSSZZZZ (*) ZZZZ = Time zone (*) EDIFICE code
2005	an..3	M Date/time/period qualifier	M	
2380	an..35	C Date/time/period	R	
2379	an..3	C Date/time/period format qualifier	R	

SG15 LIN-PIA-IMD-MEA-QTY-ALI-GIN-DTM-MOA-SG16**MOA MONETARY AMOUNT**

Function: A segment specifying a monetary amount for the line item.

Usage : D 1

Notes :

Ref.	Rep.	Name	EDIFICE Utilisation	
C516		M MONETARY AMOUNT	M	
5025	an..3	M Monetary amount type qualifier	M	203 = Line item amount
5004	n..18	C Monetary amount	R	
6345	an..3	C Currency, coded	R	Use ISO 4217, 3 alpha code
6343	an..3	C Currency qualifier	N	
4405	an..3	C Status, coded	N	

SG16 RFF-DTM**RFF REFERENCE**

Function: A segment specifying an identifying number.

Usage : M1

Notes : Where references do not apply to the whole message they must appear here.

Ref.	Rep.	Name		EDIFICE Utilisation
C506		M REFERENCE	M	
1153	an..3	M Reference qualifier	M	AAN = Delivery schedule number AFE = Export Control Commodity number (ECCN) EB = Embargo permit number EN = Embargo number HS = Harmonised system number IV = Invoice number ON = Order number (purchase) VN = Order number (vendor)
1154	an..35	C Reference number	R	As specified by DE 1153
1156	an..6	C Line number	O	To hold the line number within the referenced document identified in the RFF segment (DE 1154). That is the case when DE 1153 = 'ON' or 'AAN'.
4000	an..35	C Reference version number	N	

SG16 RFF-DTM

DTM DATE/TIME/PERIOD

Function: A segment indicating the date/time of the identifying number.

Usage : D 1

Notes :

Ref.	Rep.	Name	EDIFICE Utilisation
C507		M DATE/TIME/PERIOD	M
2005	an..3	M Date/time/period qualifier	M 171 = Reference date/time
2380	an..35	C Date/time/period	R
2379	an..3	C Date/time/period format qualifier	R
			102 = CCYYMMDD
			203 = CCYYMMDDHHMM
			303 = CCYYMMDDHHMMZZZ
			ZZZ = Time zone
			304 = CCYYMMDDHHMMSSZZZ
			ZZZ = Time zone
			X03 = CCYYMMDDHHMMZZZZZ (*)
			ZZZZZ = Time zone
			X04 = CCYYMMDDHHMMSSZZZZZ (*)
			ZZZZZ = Time zone
			(*) EDIFICE code

UNT MESSAGE TRAILER

Function: A service segment ending, and providing information for checking the completeness of a message.
 Usage : M1
 Notes : Refer to EDIFICE utilisation of the UN/EDIFACT service segments, Issue EDSS04.

Ref.	Rep.	Name	EDIFICE Utilisation	
0074	n..6	M NUMBER OF SEGMENTS IN A MESSAGE	M	Count of all segments in the message, UNH and UNT included.
0062	an..14	M MESSAGE REFERENCE NUMBER	M	Must be the same reference number as in DE 0062 of the UNH segment of this message.

EXAMPLES

The following examples provide help on how to use this message:

Example 1 - Possible options on how to use the DETAIL section of the message.

Example 2 - Simplified domestic shipment.

Example 3 - International shipment going by air.

Example 4 - International shipment going by road.

Example 5 - Using the DESADV to let the Buyer know when goods are ready to be collected.

Example 6 - Use of Cancellation and Replace options

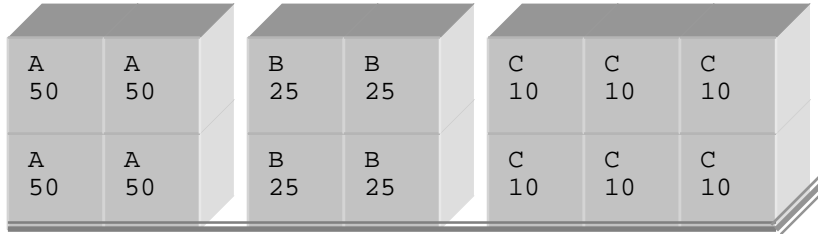
EXAMPLE 1

The following example is not a complete example of the message. It is included here to provide the user with an indication on how the packaging structure of the message can be used within the detail segments of the message.

PRODUCT-DRIVEN AND PACKAGE-DRIVEN LOGICS:

There are several ways of using the product-driven and package-driven logics; here are three, best illustrated with an example.

THE EXAMPLE:



Container Id = LEABCCNT001

4 boxes of Product A 4 ... of B 6 ... of C
 Product ID=5012345678900 5099001234557 5000881234567
 Each contains 50 kg Each... 25 kg Each... 10 kg
 Order No. PO/123 ... PO/234 ... PO/345
 Boxes marked A1-A4 ... B1-B4 ... C1-C6

A) Use of the PRODUCT-DRIVEN logic without packaging information
 (most simple case with emphasis on the products, structure
 CPS LIN ... LIN ... LIN ...).

Product related to the order process, in RFF.
 Package hierarchy link not specified in this example.
 Package type not identified.

CPS+1' Mandatory trigger segment

LIN+1++5012345678900:EN' Line 1 identifies 1st Product
 QTY+12:200:KGM' Total received quantity: 200 kg
 RFF+ON:PO/123' Order number as reference.

LIN+2++5099001234557:EN' Line 2 identifies 2nd Product
 QTY+12:100:KGM' Total received quantity: 100 kg
 RFF+ON:PO/234' Order number as reference.

LIN+3++5000881234567:EN' Line 3 identifies 3rd Product
 QTY+12:60:KGM' Total received quantity: 60 kg
 RFF+ON:PO/345' Order number as reference.

B) Use of the PRODUCT-DRIVEN logic with packaging information
(structure with a one-to-one relationship between CPS and LIN:
CPS PAC PAC...LIN, CPS PAC PAC...LIN, CPS PAC PAC...LIN).

Packaging information related to each product provided with nested
PAC within separate CPS
Package type identified in PAC
Package Ids. provided in PCI GIN
Product related to the order process in RFF.

CPS+1' Detail related to 1st product
PAC+1++CTR' One container
PAC+4++BX' 4 boxes in this container
PCI+17' Packages Id. supplied by seller:
GIN+ML+A1:A4' Markings A1 to A4
LIN+1++5012345678900:EN' Line 1 identifies Product A
QTY+12:200:KGM' Total received quantity: 200 kg
RFF+ON:PO/123' Order number as reference.

CPS+2' Detail for 2nd product
PAC+1++CTR' One container
PAC+4++BX' 4 boxes in this container
PCI+17' Packages Id. supplied by seller:
GIN+ML+B1:B4' Markings B1 to B4
LIN+2++5099001234557:EN' Line 2 identifies Product B
QTY+12:100:KGM' Total received quantity: 100 kg
RFF+ON:PO/234' Order number as reference.

CPS+3' Detail for 3rd product
PAC+1++CTR' One container
PAC+6++BX' 6 boxes in this container
PCI+17' Packages Id. supplied by seller:
GIN+ML+C1:C6' Markings C1 to C6
LIN+3++5000881234567:EN' Line 3 identifies Product C
QTY+12:60:KGM' Total received quantity: 60 kg
RFF+ON:PO/345' Order number as reference.

C) Use of the PACKAGE-DRIVEN logic (emphasis on the packaging, case of a packing list)
(structure CPS PAC, CPS PAC LIN, CPS PAC LIN ...).

Package hierarchy link specified in CPS.
Package type identified in PAC.
Package Ids. provided in PCI GIN
Product not related to the order process in this example.

CPS+1' Shipment level (outer container)
PAC+1++CTR' One container
PAC+14++BX' 14 boxes received in total.
PCI+17' Id. supplied by seller:
GIN+VZ+LEABCCNT001' License Plate LEABCCNT001

CPS+2+1' Unit Load level
PAC+4++BX' 4 boxes
PCI+17' Packages Id. supplied by seller:
GIN+ML+A1:A4' Markings A1 to A4
LIN+1++5012345678900:EN' Line to identify 1st Product
QTY+48:200:KGM' Total received quantity: 200 kg

CPS+3+1'
PAC+4++BX' 4 other boxes
PCI+17' Packages Id. supplied by seller:
GIN+ML+B1:B4' Markings B1 to B4
LIN+2++5099001234557:EN' Line to identify 2nd Product
QTY+48:100:KGM' Total received quantity: 100 kg

CPS+4+1'
PAC+6++BX' 6 other boxes
PCI+17' Packages Id. supplied by seller:
GIN+ML+C1:C6' Markings C1 to C6
LIN+3++5000881234567:EN' Line to identify 3rd Product
QTY+48:60:KGM' Total received quantity: 60 kg

EXAMPLE 2 - Simplified domestic shipment.

Example describes a consignment between Buyer-001 and Seller-002.
 The consignment consists of 2 boxes each containing the same part.
 One box contains 300 parts, the other 100 parts. Each box has its own unique identification number.
 The consignment was shipped by road using UPS as the carrier. It left on the 8th July 2001 at 16:24.

UNB+UNOC:3+123456789:1:X+987654321:1:X+021209:1909+88+X:AA+DESADV++1+X+1'	
UNH+3211+DESADV:D:97A:UN:EDDS06'	
BGM+351+927649+9'	Shipment number
DTM+137:200107081624:203'	Creation date/time
MEA+WT+AAD+LBR:4.322'	Total shipment weight in lbs.
MEA+CT+SQ+NMP:2'	2 unit loads
RFF+ON:ZD230187'	Order number
DTM+171:20010613:102'	Date of Order
RFF+PK:4520918'	Pack list number
NAD+SE+SELLER-002::92'	Ship from (coded)
NAD+BY+BUYER-001::92'	Buyers code
TDT+20+FTR-989-12+3++UPS::91'	Mode is road; carrier is UPS
LOC+5+SELLER-002::92'	Location code
DTM+11:200107081624:203'	Despatch date/time
CPS+1'	
PAC+1++BX'	1st unit load (box)
QTY+52:300'	Contains 300 items
PCI+17'	Box Id provided by Seller
GIN+VZ+LEABC7809274'	Id of box - License plate
LIN+1++TRO-9876:BP::92'	Buyer's part number
PIA+1+DR-987VG:VP::91'	Seller's part number
QTY+12:300'	Quantity shipped in this box
GIN+BX+A-900506+A-900512'	Batch numbers
CPS+2'	
PAC+1++BX'	2nd unit load (box)
QTY+52:100'	Contains 100 items
PCI+17'	Box Id provided by Seller
GIN+VZ+LEABC7809275'	Id of box - License plate
LIN+1++TRO-9876:BP::92'	Buyer's part number
PIA+1+DR-987VG:VP::91'	Seller's part number
QTY+12:100'	Quantity shipped in this box
GIN+BX+A-900506+A-900512'	Batch numbers
UNT+32+3211'	Count of segments
UNZ+1+88'	

EXAMPLE 3 - International shipment going by air.

Similar example to example 3 except that the goods are an International shipment and are being sent by air. Two flights are described.

UNB+UNOC:3+123456789:1:X+987654321:1:X+021209:1909+88+X:AA+DESADV++1+X+1'	
UNH+3211+DESADV:D:97A:UN:EDDS06'	
BGM+351+927649+9'	Shipment number
DTM+137:200107081624:203'	Creation date/time
MEA+WT+AAD+KGM:18.5'	Total shipment weight in kilos.
MEA+CT+SQ+NMP:2'	2 unit loads
MOA+39:5000:USD'	Invoice amount in US dollars
RFF+ON:ZD230187'	Order number
DTM+171:20010613:102'	Date of Order
RFF+AWB:10480'	Air waybill number
NAD+SE+SELLER-002::92'	Ship from (coded)
NAD+BY+BUYER-001::92'	Buyers code
NAD+FW+DA::91'	Freight Forwarder
TDT+12+718+4++JL::3'	Mode is AIR; carrier is Japan Air
LOC+5+BKK::3'	Departs from
DTM+11:200107100615:203'	Despatch date/time
LOC+15+DATH::3'	Transfers at
TDT+12+042+4++JL::3'	Mode is AIR; carrier is Japan Air
LOC+8+JFK::3'	Destined for
DTM+132:200107121030:203'	Carrier ETA date/time
LOC+24+JFK::3'	Port of entry
CPS+1'	
PAC+1+++BX'	1st unit load (box)
QTY+52:300'	Contains 300 items
PCI+17'	Box Id provided by Seller
GIN+VZ+LEABC7809274'	Id of box - License plate
LIN+1+++TRO-9876:BP::92'	Buyer's part number
PIA+1+DR-987VG:VP::91'	Seller's part number
QTY+12:300'	Quantity shipped in this box
GIN+BX+A-900506+A-900512'	Batch numbers
CPS+2'	
PAC+1+++BX'	2nd unit load (box)
QTY+52:100'	Contains 100 items
PCI+17'	Box Id provided by Seller
GIN+VZ+LEABC7809275'	Id of box - License plate
LIN+1+++TRO-9876:BP::92'	Buyer's part number
PIA+1+DR-987VG:VP::91'	Seller's part number
QTY+12:100'	Quantity shipped in this box
GIN+BX+A-900506+A-900512'	Batch numbers
UNT+39+3211'	Count of segments
UNZ+1+88'	

EXAMPLE 4 - International shipment going by road.
 Seller has responsibility for the transport of goods.

The following example of a Despatch Advice message provides the description of a shipment of goods that have been despatched by the supplier of the goods, identified as Company A. The buyer of the goods is identified as Company B and the warehouse where the goods are to be delivered to is identified as Location B.

The Despatch Advice, reference number 01-5678ML, is sent on the 20th April 2001 at 14:50. The goods to be despatched are a complete shipment of the goods purchased on the 17th April 2001 according to the buyer's purchase order number PO505054. They are despatched on the 20th April at 14:30 and are expected to arrive the next day at 12:00.

The despatch advice refers to a shipment of goods containing 2 pallets, each pallet uniquely identified by a bar coded serial shipping code.

The first pallet is identified by a license plate LEABCXXX90 and contains 3 cartons of the product identified by the number ABCDE-AA, each carton containing a number of units. The pallet is a standard 800mm x 1200mm pallet with a gross weight of 263.2 kilograms.

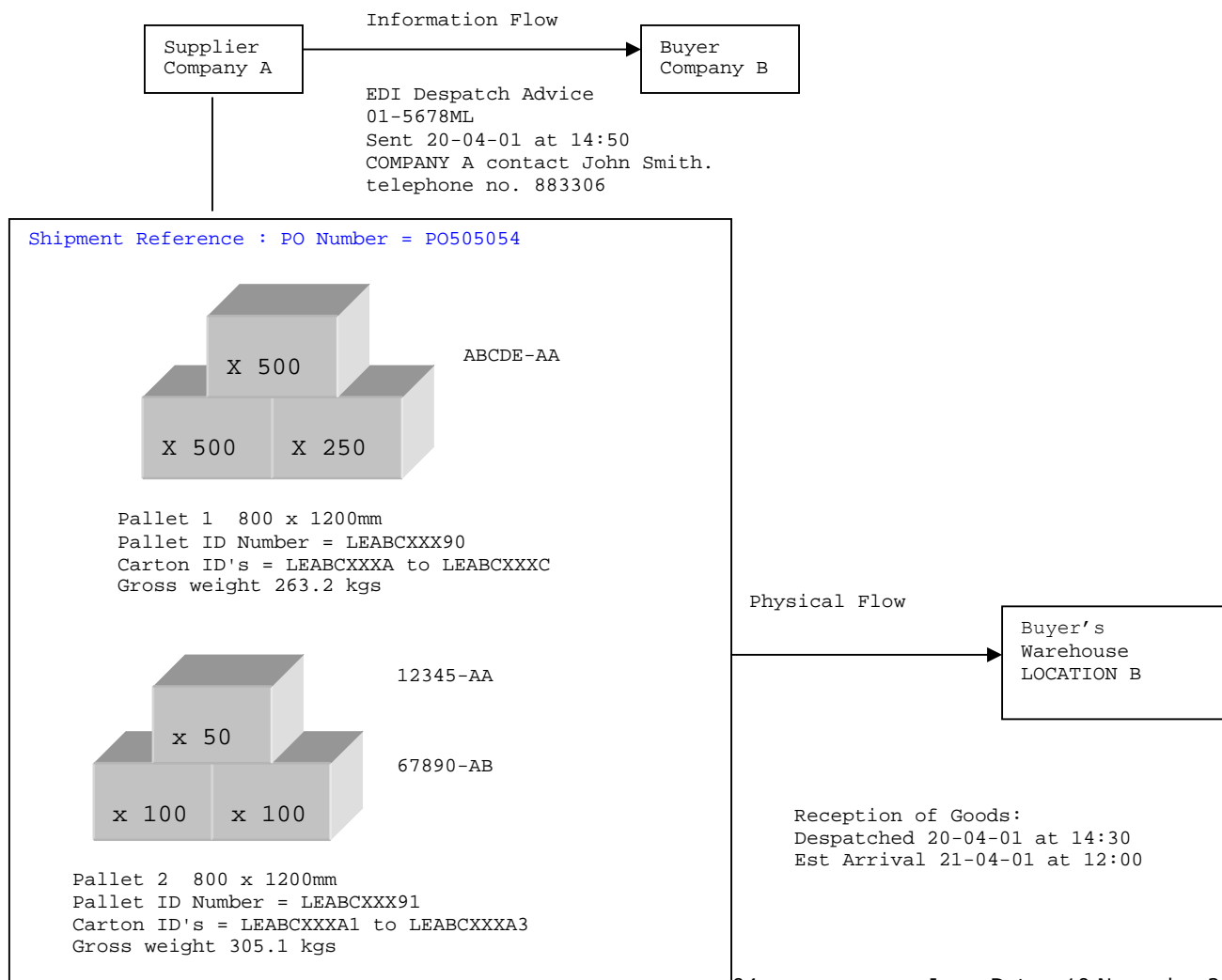
The second pallet has a license plate of LEABCXXX91 and has a mixed product load; 1 carton of product 12345-AA, and 2 cartons of product 67890-AB. The pallet has the same dimensions as the first one with a gross weight of 305.1 kilograms.

Each of the cartons have their own associated bar-coded Package ID number.

A contact code is given for COMPANY A along with a telephone number.

The despatch advice describes the shipment as being composed of two pallets, providing for each pallet a description of the type of pallet in terms of dimensions and weight, as well as the pallet's unique identity number (serial shipping container code). The contents of each pallet is then described in terms of the despatch units it contains including the package serial number.

The following example uses PACKAGE related logic i.e. there is a one to one relationship between the CPS and PAC segments.



UNB+UNOC:3+123456789:1:X+987654321:1:X+021209:1909+88+X:AA+DESADV++1+X+1'
 UNH+1+DESADV:D:97A:UN:EDDS06' Message Header
 BGM+351+93-5678ML+9' Shipment 93-5678ML
 DTM+137:200104201430:203' Date/time of despatch adv.
 DTM+11:200104201430:203' Actual Ship date and time.
 DTM+17:200104211200:203' Est delivery date and time
 MEA+WT+AAD+KGM:568.3' Total gross shipment weight
 MEA+CT+SQ+NMP:2' Number of unit loads
 MOA+39:3500:USD' Invoice amount is \$3500
 RFF+ON:PO505054' Purchase Order No
 DTM+171:20010417:102' Date of PO
 NAD+SE+COMPANYA::91' Code assigned by Seller
 CTA+IC+JOHN SMITH' Contact person
 COM+883306:TE' Contact telephone number
 NAD+BY+COMPANYB::91' Buyer code assigned by Seller
 NAD+DP+LOCATIONB::92' Ship to location
 TDT+20++3+++++:::H1234 CFD' Main-carriage, by road.
 EQD+TE' Trailer
 SEL+ABCD123456+CU' Trailer seal no. assigned by Customs

CPS+1' 1st unit load
 PAC+1++SW' Unit load is shrinkwrapped
 MEA+WT+G+KGM:263.2' Gross weight in kilograms
 QTY+52:3' Unit load contains 3 boxes
 HAN+HEA::9' Heavy cargo
 PCI+17' Labels/ID's supplied by seller
 RFF+IV:V1013-015' Invoice number
 GIN+WB+LEABCXXX90' Unit identification - License plate

CPS+2+1' Second level of description
 PAC+1++BX' 1st box, 1st unit load
 MEA+WT+G+KGM:100' Gross weight of box
 PCI+17' Labels/ID's supplied by seller
 GIN+WA+LEABCXXXA' Package ID of box - License plate
 LIN+1++ABCDE-AA:VP::91' First line item
 QTY+12:500' 500 x ABCDE-AA despatched
 GIN+BN+999001+999500' Serial numbers

CPS+3+1' 2nd box, 1st unit load
 PAC+1++BX' Gross weight of box
 MEA+WT+G+KGM:100' Labels/ID's supplied by seller
 PCI+17' Package ID of box - License plate
 GIN+WA+LEABCXXXB' First line item
 LIN+1++ABCDE-AA:VP::91' 500 x ABCDE-AA despatched
 QTY+12:500' Serial numbers
 GIN+BN+999001+998500'

CPS+4+1' 3rd box, 1st unit load
 PAC+1++BX' Gross weight of box
 MEA+WT+G+KGM:63.2' Labels/ID's supplied by seller
 PCI+17' Package ID of box - License plate
 GIN+WA+LEABCXXXC' First line item
 LIN+1++ABCDE-AA:VP::91' 250 x ABCDE-AA despatched
 QTY+12:250' Serial numbers
 GIN+BN+999001+997250'

CPS+1' 2nd unit load
 PAC+1++SW' Unit load is shrinkwrapped
 MEA+WT+G+KGM:305.1' Gross weight in kilograms
 QTY+52:3' Unit load contains 3 boxes
 HAN+HEA::9' Heavy cargo
 PCI+17' Labels/ID's supplied by seller
 RFF+IV:V1013-015' Invoice number
 GIN+WB+LEABCXXX91' Unit identification - License plate

CPS+6+5' 1st box in 2nd unit load
 PAC+1++BX' Gross weight in kilograms
 MEA+WT+G+KGM:65.1' Contains 50 items
 QTY+52:50' Labels/ID's supplied by seller
 PCI+17' Package ID of box - License plate
 GIN+WA+LEABCXXXA1' First line item
 LIN+1++12345-AA:VP::91' 50 x 12345-AA despatched
 QTY+12:50'

GIN+BN+996001+996050'

Serial numbers

CPS+7+5'
PAC+1++BX'
MEA+WT+G+KGM:120'
QTY+52:100'
PCI+17'
GIN+WA+LEABCXXXA2'
LIN+1++67890-AB:VP::91'
PIA+1+SD12345:BP::92'
QTY+12:100'
ALI+US'
GIN+BN+995001+995100'
RFF+IV:V1013-015'

2nd box in 2nd unit load
Gross weight in kilograms
Contains 100 items
Labels/ID's supplied by seller
Package ID of box - License plate
First line item; product type
Buyer's part number
100 x 67890-AB despatched
Country of origin
Serial numbers
Invoice number

CPS+8+5'
PAC+1++BX'
MEA+WT+G+KGM:120'
QTY+52:100'
PCI+17'
GIN+WA+LEABCXXXA3'
LIN+1++67890-AB:VP::91'
PIA+1+SD12345:BP::92'
QTY+12:100'
ALI+US'
GIN+BN+995101+995200'
RFF+IV:V1013-015'

3rd box in 2nd unit load
Gross weight in kilograms
Contains 100 items
Labels/ID's supplied by seller
Package ID of box - License plate
First line item; product type
Buyer's part number
100 x 67890-AB despatched
Country of origin
Serial numbers
Invoice number

UNT+92+1'
UNZ+1+88'

Message Trailer

EXAMPLE 5 - Ready for Despatch Advice

Used in situations where the Buyer takes responsibility for the transport of the goods.

UNB+UNOC:3+123456789:1:X+987654321:1:X+021209:1909+88+X:AA+DESADV++1+X+1'	Message Header
UNH+1+DESADV:D:97A:UN:EDDS06'	Shipment 93-5678ML
BGM+345+93-5678ML+9'	Date/time of despatch adv.
DTM+137:200104201450:203'	Pickup date and time
DTM+200:200104201430:203'	Total gross shipment weight
MEA+WT+AAD+KGM:568.3'	Number of unit loads
MEA+CT+SQ+NMP:2'	Purchase Order No
RFF+ON:PO505054'	Date of PO
DTM+171:19930417:102'	Code assigned by Seller
NAD+SE+COMPANYA::91'	Buyer code assigned by Seller
NAD+BY+COMPANYB::91'	Ex works delivery
TOD+6++EXW'	

Detail Section (As in example 4)

EXAMPLE 6 - Use of Cancellation and Replace options

CANCELLATION

UNB+UNOC:3+123456789:1:X+987654321:1:X+021209:1909+88+X:AA+DESADV++1+X+1'	Message Header
UNH+1+DESADV:D:97A:UN:EDDS06'	Shipment 93-5678ML cancelled
BGM+351+93-5678ML+1'	Date/time of despatch adv.
DTM+137:200104201450:203'	Code assigned by Seller
NAD+SE+COMPANYA::91'	Buyer code assigned by Seller
NAD+BY+COMPANYB::91'	
UNT+6+1'	Message Trailer
UNZ+1+88'	

REPLACE

UNB+UNOC:3+123456789:1:X+987654321:1:X+021209:1909+88+X:AA+DESADV++1+X+1'	Message Header
UNH+1+DESADV:D:97A:UN:EDDS06'	Shipment 93-5678ML
BGM+345+93-5678ML+5'	Date/time of despatch adv.
DTM+137:200104201435:203'	Pickup date and time
DTM+200:200104211200:203'	Total gross shipment weight
MEA+WT+AAD+KGM:568.3'	Number of unit loads
MEA+CT+SQ+NMP:2'	Invoice amount in US dollars
MOA+39:3500:USD'	Purchase Order No
RFF+ON:PO505054'	Date of PO
DTM+171:20010418:102'	Code assigned by Seller
NAD+SE+COMPANYA::91'	Buyer code assigned by Seller
NAD+BY+COMPANYB::91'	Ex works delivery
TOD+6++EXW'	

Detail Section (As in example 4)